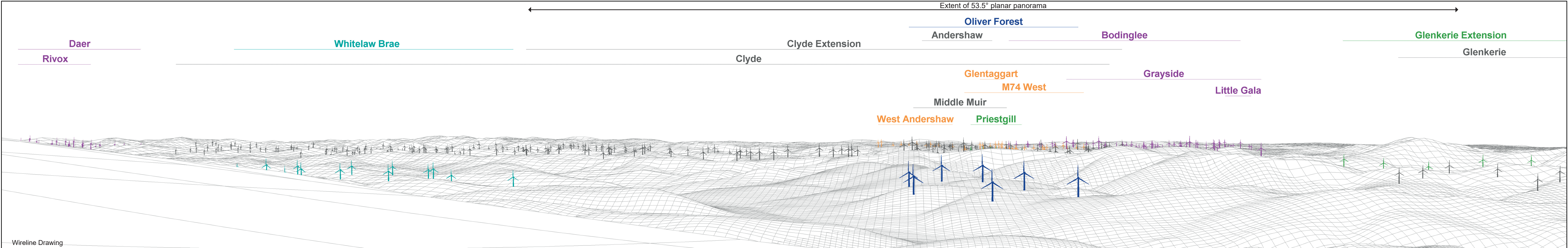


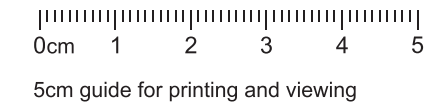
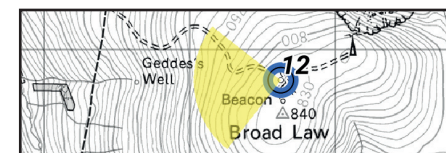


Baseline Photograph

This image provides landscape and visual context only



Wireline Drawing



- ✦ Proposal
- ✦ Application
- ✦ Scoping
- ✦ Existing
- ✦ Consented
- ✦ Under Construction

OS Reference: 314595 623812
 Eye Level: 822.78m AOD
 Direction of View: 263°
 Distance to Development: 6220 m

Horizontal field of view: 90° (cylindrical projection)
 Principal Distance: 522mm
 Paper Size: 841 x 297 mm
 Correct printed image size: 820 x 130 mm

Camera: NIKON D610
 Lens: 50mm
 Camera Height: 1.5m AGL
 Date and Time: 11/4/2024 12:25

Figure: 7.24a
Viewpoint 12: Broad Law

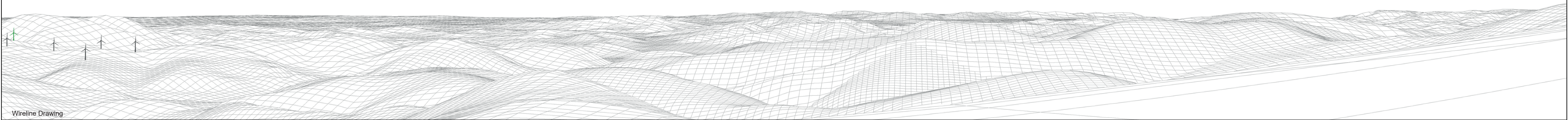


Baseline Photograph

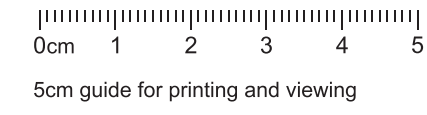
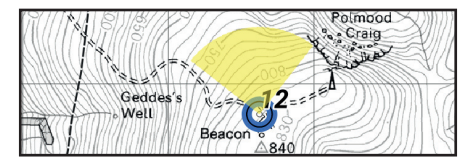
This image provides landscape and visual context only







Glenkerie Extension

Glenkerie



Wireline Drawing



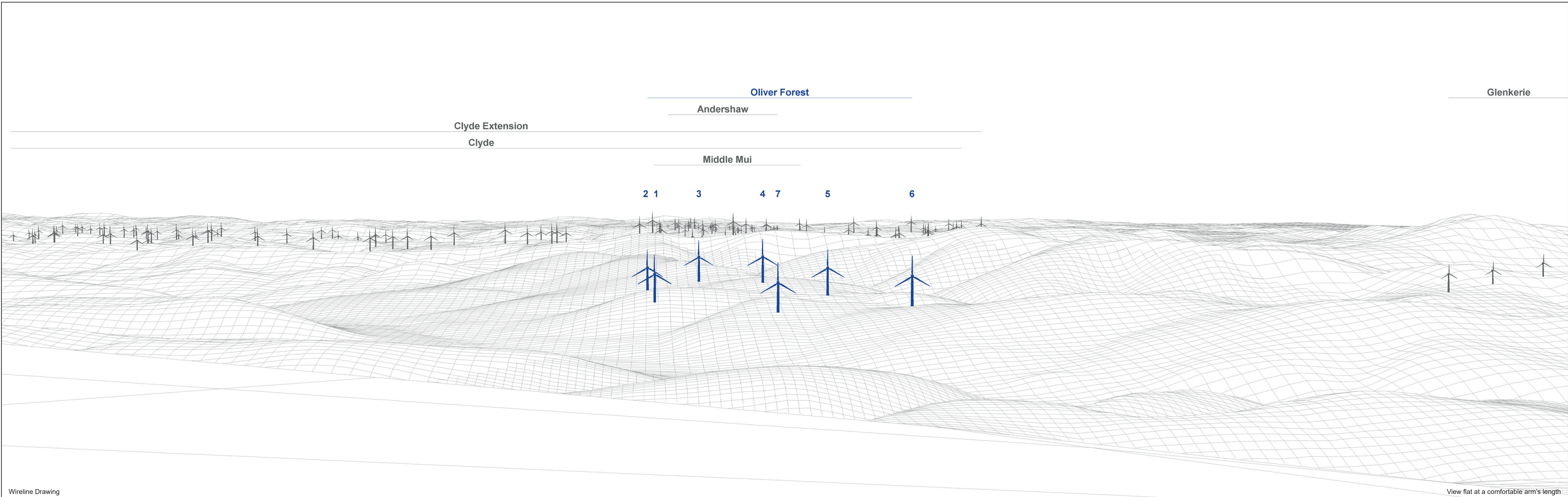
-  Proposal
-  Application
-  Scoping
-  Existing
-  Consented
-  Under Construction

OS Reference: 314595 623812
 Eye Level: 822.78m AOD
 Direction of View: 353°
 Distance to Development: 6220 m

Horizontal field of view: 90° (cylindrical projection)
 Principal Distance: 522mm
 Paper Size: 841 x 297 mm
 Correct printed image size: 820 x 130 mm

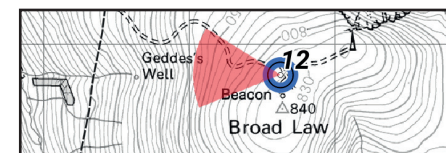
Camera: NIKON D610
 Lens: 50mm
 Camera Height: 1.5m AGL
 Date and Time: 11/4/2024 12:25

Figure: 7.24b
 Viewpoint 12: Broad Law

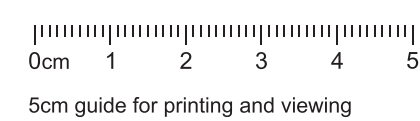


Wireline Drawing

View flat at a comfortable arm's length



- Proposal
- Existing
- Under Construction



OS Reference: 314595 623812
 Eye Level: 822.78m AOD
 Direction of View: 275°
 Distance to Development: 6220 m

Horizontal field of view: 53.5° (planar projection)
 Principal Distance: 812.5mm
 Paper Size: 841 x 297 mm
 Correct printed image size: 820 x 260 mm

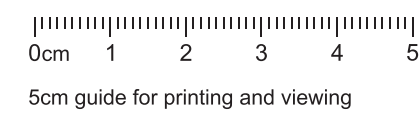
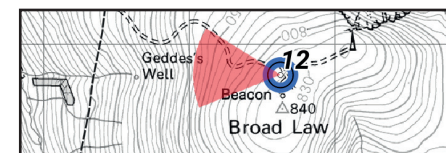
Camera: NIKON D610
 Lens: 50mm
 Camera Height: 1.5m AGL
 Date and Time: 11/4/2024 12:25

Figure: 7.24c
 Viewpoint 12: Broad Law



Photomontage

View flat at a comfortable arm's length



OS Reference: 314595 623812
 Eye Level: 822.78m AOD
 Direction of View: 275°
 Distance to Development: 6220 m

Horizontal field of view: 53.5° (planar projection)
 Principal Distance: 812.5mm
 Paper Size: 841 x 297 mm
 Correct printed image size: 820 x 260 mm

Camera: NIKON D610
 Lens: 50mm
 Camera Height: 1.5m AGL
 Date and Time: 11/4/2024 12:25

Figure: 7.24d
 Viewpoint 12: Broad Law