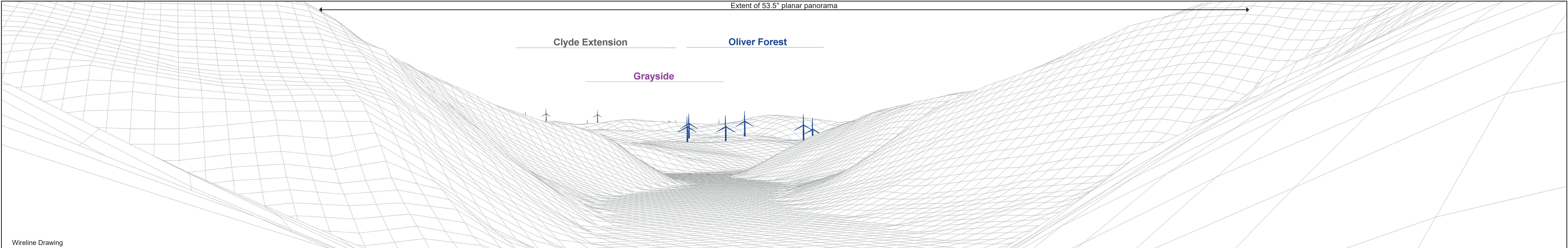


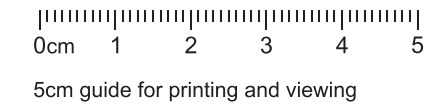
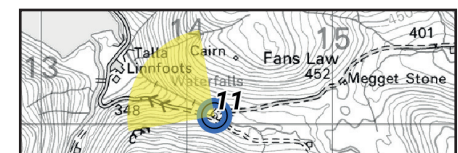


Baseline Photograph

This image provides landscape and visual context only.



Wireline Drawing



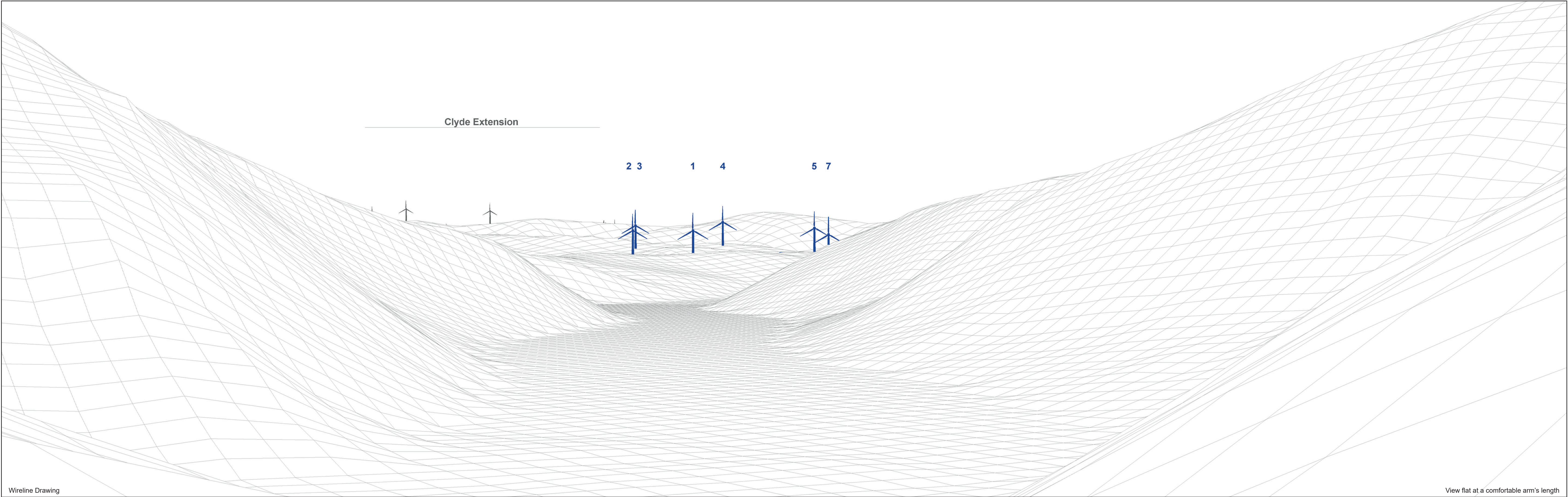
- Proposal
- Application
- Scoping
- Existing
- Consented
- Under Construction

OS Reference: 314100 620071  
 Eye Level: 400.24m AOD  
 Direction of View: 305°  
 Distance to Development: 7135 m

Horizontal field of view: 90° (cylindrical projection)  
 Principal Distance: 522mm  
 Paper Size: 841 x 297 mm  
 Correct printed image size: 820 x 130 mm

Camera: NIKON D610  
 Lens: 50mm  
 Camera Height: 1.5m AGL  
 Date and Time: 4/3/2024 13:35

Figure: 7.23a  
 Viewpoint 11: Talla Linn

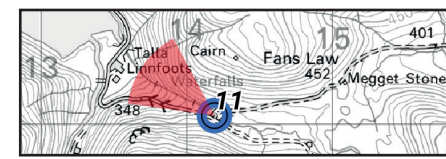





Clyde Extension

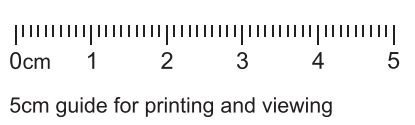
2 3      1      4      5 7

Wireline Drawing

View flat at a comfortable arm's length



 Proposal  
  Existing  
  Under Construction



OS Reference: 314100 620071  
 Eye Level: 400.24m AOD  
 Direction of View: 305°  
 Distance to Development: 7135 m

Horizontal field of view: 53.5° (planar projection)  
 Principal Distance: 812.5mm  
 Paper Size: 841 x 297 mm  
 Correct printed image size: 820 x 260 mm

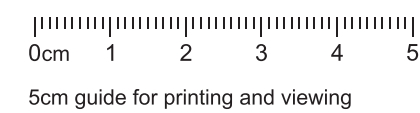
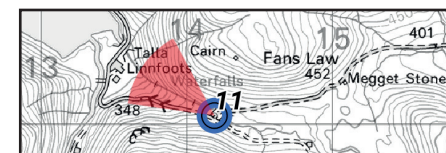
Camera: NIKON D610  
 Lens: 50mm  
 Camera Height: 1.5m AGL  
 Date and Time: 4/3/2024 13:35

Figure: 7.23b  
Viewpoint 11: Talla Linn



Photomontage

View flat at a comfortable arm's length



OS Reference: 314100 620071  
 Eye Level: 400.24m AOD  
 Direction of View: 305°  
 Distance to Development: 7135 m

Horizontal field of view: 53.5° (planar projection)  
 Principal Distance: 812.5mm  
 Paper Size: 841 x 297 mm  
 Correct printed image size: 820 x 260 mm

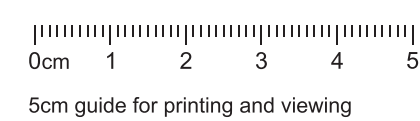
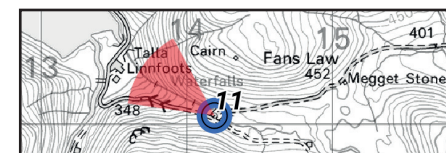
Camera: NIKON D610  
 Lens: 50mm  
 Camera Height: 1.5m AGL  
 Date and Time: 4/3/2024 13:35

Figure: 7.23c  
 Viewpoint 11: Talla Linn



Photomontage

View flat at a comfortable arm's length



OS Reference: 314094 620072  
 Eye Level: 399.94m AOD  
 Direction of View: 305°  
 Distance to Development: 7129 m

Horizontal field of view: 53.5° (planar projection)  
 Principal Distance: 812.5mm  
 Paper Size: 841 x 297 mm  
 Correct printed image size: 820 x 260 mm

Camera: NIKON D610  
 Lens: 50mm  
 Camera Height: 1.5m AGL  
 Date and Time: 16/4/2024 20:20

Figure: 7.23d  
 Viewpoint 11: Talla Linn