

- Proposal
- Application
- Scoping
- Existing
- Consented
- Under Construction

OS Reference: 305274 618354
 Eye Level: 325.49m AOD
 Direction of View: 300°
 Distance to Development: 5881 m

Horizontal field of view: 90° (cylindrical projection)
 Principal Distance: 522mm
 Paper Size: 841 x 297 mm
 Correct printed image size: 820 x 130 mm

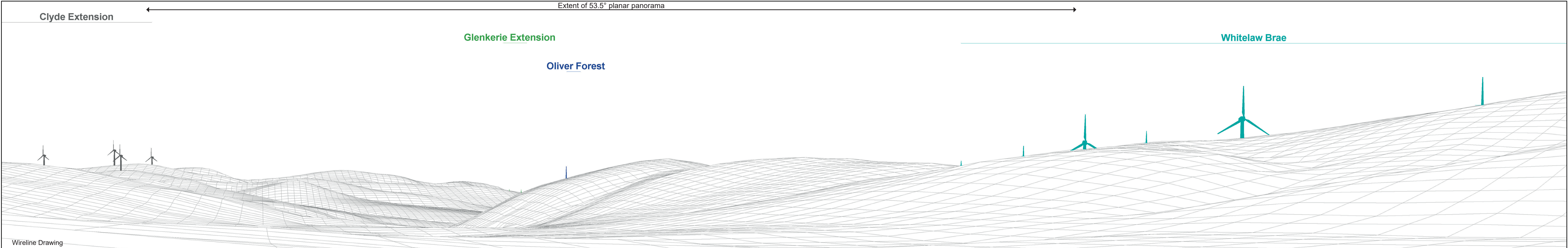
Camera: NIKON D610
 Lens: 50mm
 Camera Height: 1.5m AGL
 Date and Time: 17/8/2023 15:45



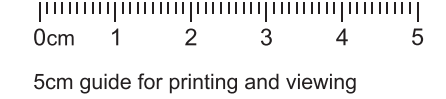
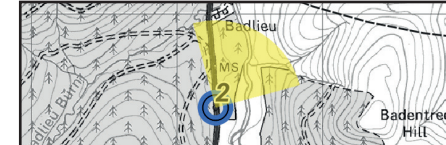
Baseline Photograph

This image provides landscape and visual context only

Extent of 53.5° planar panorama



Wireline Drawing



- Proposal
- Application
- Scoping
- Existing
- Consented
- Under Construction

OS Reference: 305274 618354
 Eye Level: 325.49m AOD
 Direction of View: 30°
 Distance to Development: 5881 m

Horizontal field of view: 90° (cylindrical projection)
 Principal Distance: 522mm
 Paper Size: 841 x 297 mm
 Correct printed image size: 820 x 130 mm

Camera: NIKON D610
 Lens: 50mm
 Camera Height: 1.5m AGL
 Date and Time: 17/8/2023 15:45

Figure: 7.14b
 Viewpoint 2: A701 Tweedhopefoot

Clyde Extension

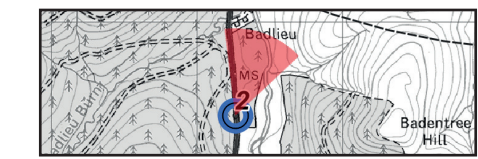





Whitelaw Brae

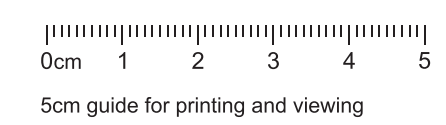
3

Wireline Drawing

View flat at a comfortable arm's length



 Proposal
  Existing
  Under Construction



OS Reference: 305274 618354
 Eye Level: 325.49m AOD
 Direction of View: 20°
 Distance to Development: 5881 m

Horizontal field of view: 53.5° (planar projection)
 Principal Distance: 812.5mm
 Paper Size: 841 x 297 mm
 Correct printed image size: 820 x 260 mm

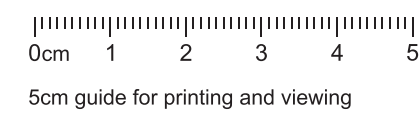
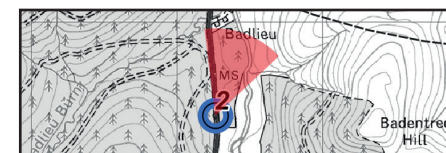
Camera: NIKON D610
 Lens: 50mm
 Camera Height: 1.5m AGL
 Date and Time: 17/8/2023 15:45

Figure: 7.14c
 Viewpoint 2: A701 Tweedhopefoot



Photomontage

View flat at a comfortable arm's length.



OS Reference: 305274 618354
 Eye Level: 325.49m AOD
 Direction of View: 20°
 Distance to Development: 5881 m

Horizontal field of view: 53.5° (planar projection)
 Principal Distance: 812.5mm
 Paper Size: 841 x 297 mm
 Correct printed image size: 820 x 260 mm

Camera: NIKON D610
 Lens: 50mm
 Camera Height: 1.5m AGL
 Date and Time: 17/8/2023 15:45

Figure: 7.14d
 Viewpoint 2: A701 Tweedhopefoot