



# OLIVER FOREST WIND FARM

## VIEWPOINTS

---

21 February - 16 March 2023

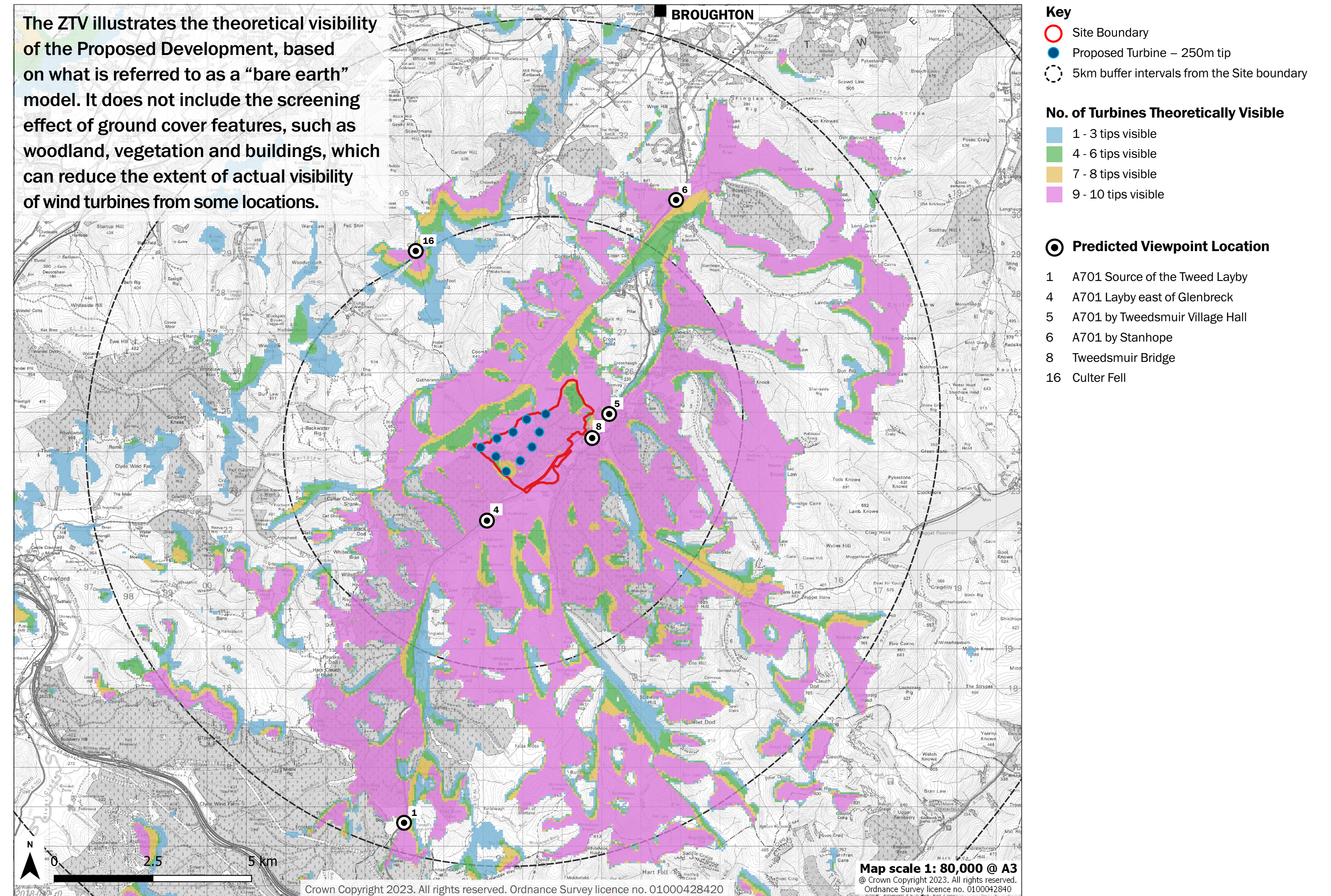
Six visualisations from local viewpoints have been provided to demonstrate how the proposed wind farm could look based on the current proposal of up to 10 turbines up to 250m to blade tip height. These illustrations provide a good representation of the current plans from several local viewpoints.\*

We are in the process of agreeing representative viewpoint locations with Scottish Borders Council, Dumfries and Galloway Council, South Lanarkshire Council and NatureScot to ensure the most suitable locations are selected to illustrate any visual effects of the wind farm. As the turbines are over 150m to tip height and will require aviation lighting, night time viewpoint locations are also being agreed.

We will hold another exhibition later this year. We expect the viewpoint locations to be agreed prior to the second exhibition and there will be another opportunity to view a selection of visualisations at that time.

A full set of visualisations for each agreed viewpoint, which includes a baseline photo, a wireline and a photomontage of how the wind farm may look, will be provided as part of the Environmental Impact Assessment Report (EIA) submitted as part of the application for the wind farm.

\* These visualisations are based on photographs taken recently. For the EIA, photographs will be taken during clear weather conditions as per requirements.



# Viewpoint 1: A701 Source of the Tweed Layby

---

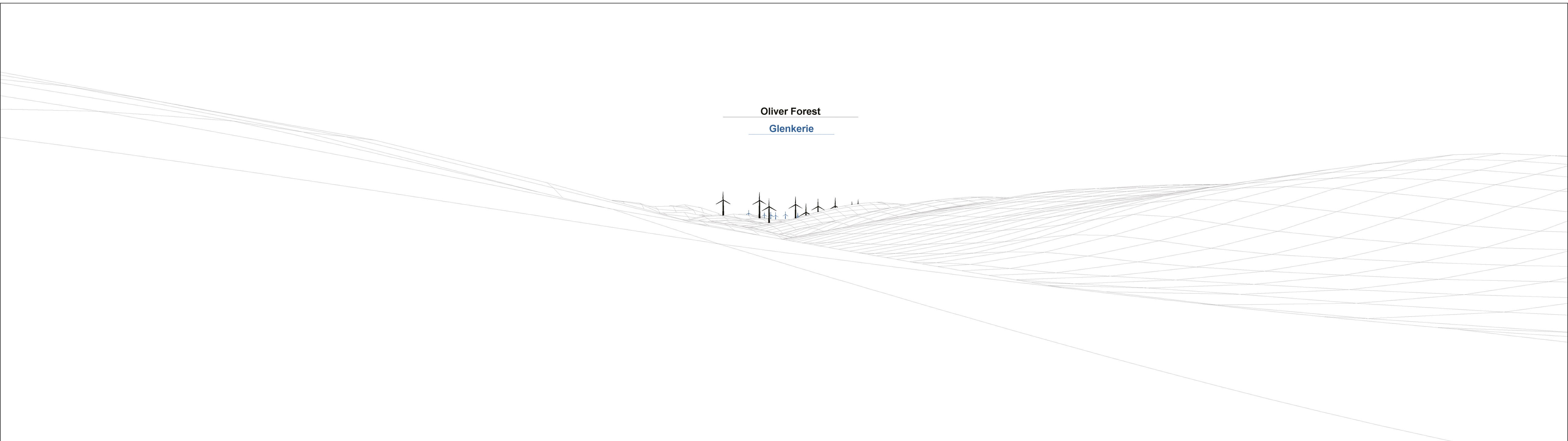
## CURRENT VIEW



Photo showing current view.

# Viewpoint 1: A701 Source of the Tweed Layby

## WIREFRAME



Wireframe showing current proposed layout.  
Based on current proposal of 10 @ 250m to blade tip height.

# Viewpoint 1: A701 Source of the Tweed Layby

---

## PREDICTED VIEW



Photomontage showing current proposed layout.  
Based on current proposal of 10 @ 250m to blade tip height.

# Viewpoint 4: A701 Layby east of Glenbreck

---

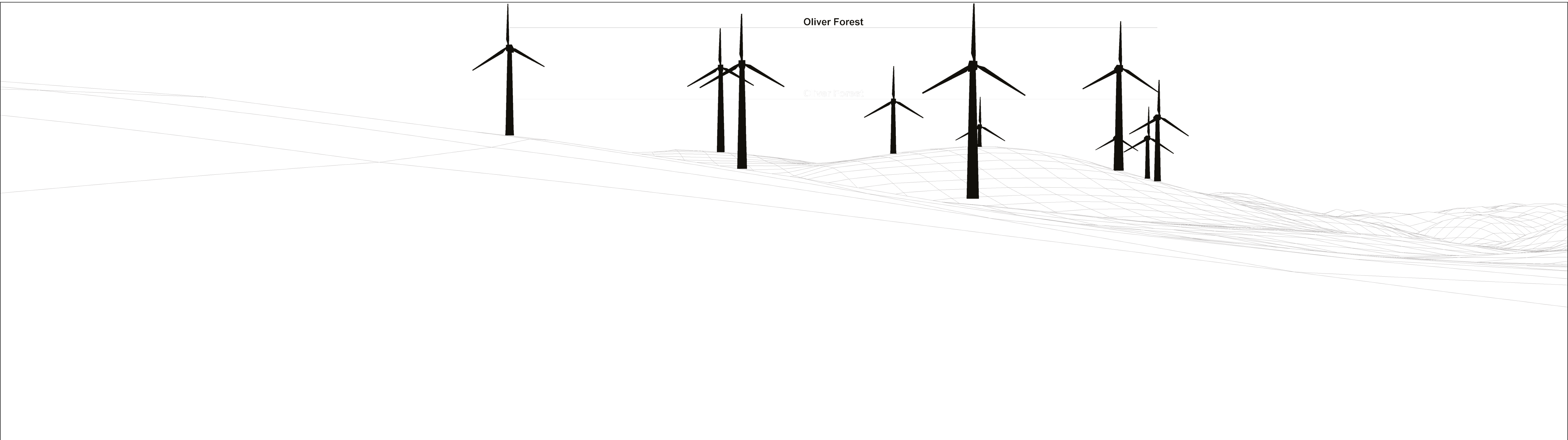
## CURRENT VIEW



Photo showing current view.

# Viewpoint 4: A701 Layby east of Glenbreck

## WIREFRAME



Wireframe showing current proposed layout.  
Based on current proposal of 10 @ 250m to blade tip height.

## Viewpoint 4: A701 Layby east of Glenbreck

---

### PREDICTED VIEW



Photomontage showing current proposed layout.  
Based on current proposal of 10 @ 250m to blade tip height.



# Viewpoint 5: A701 by Tweedsmuir Village Hall

---

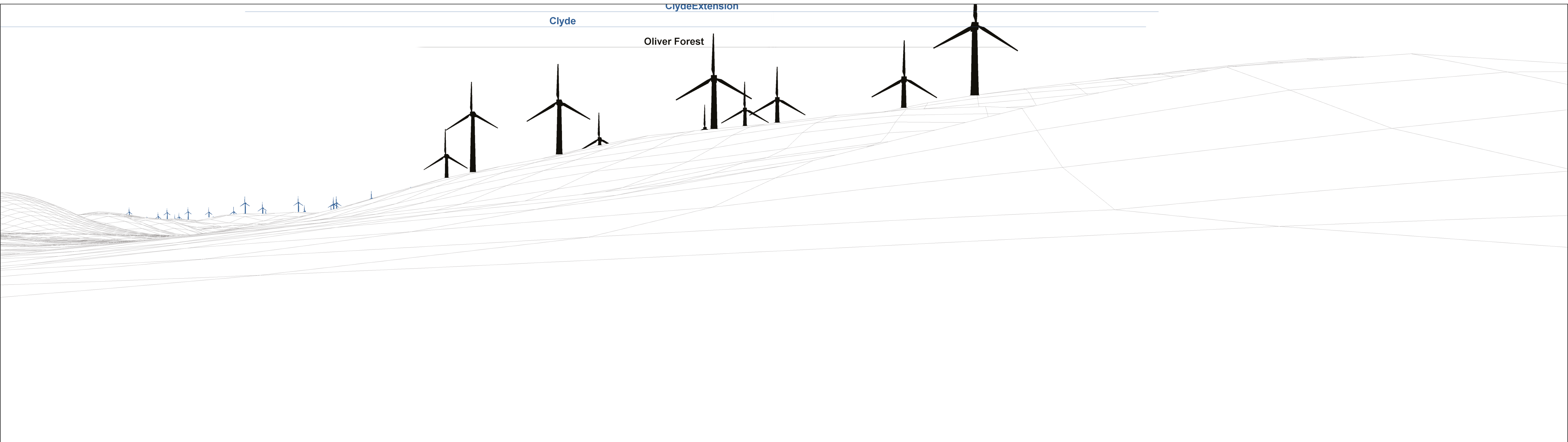
## CURRENT VIEW



Photo showing current view.

# Viewpoint 5: A701 by Tweedsmuir Village Hall

## WIREFRAME



Wireframe showing current proposed layout.  
Based on current proposal of 10 @ 250m to blade tip height.

# Viewpoint 5: A701 by Tweedsmuir Village Hall

---

## PREDICTED VIEW



Photomontage showing current proposed layout.  
Based on current proposal of 10 @ 250m to blade tip height.

# Viewpoint 6: A701 by Stanhope

---

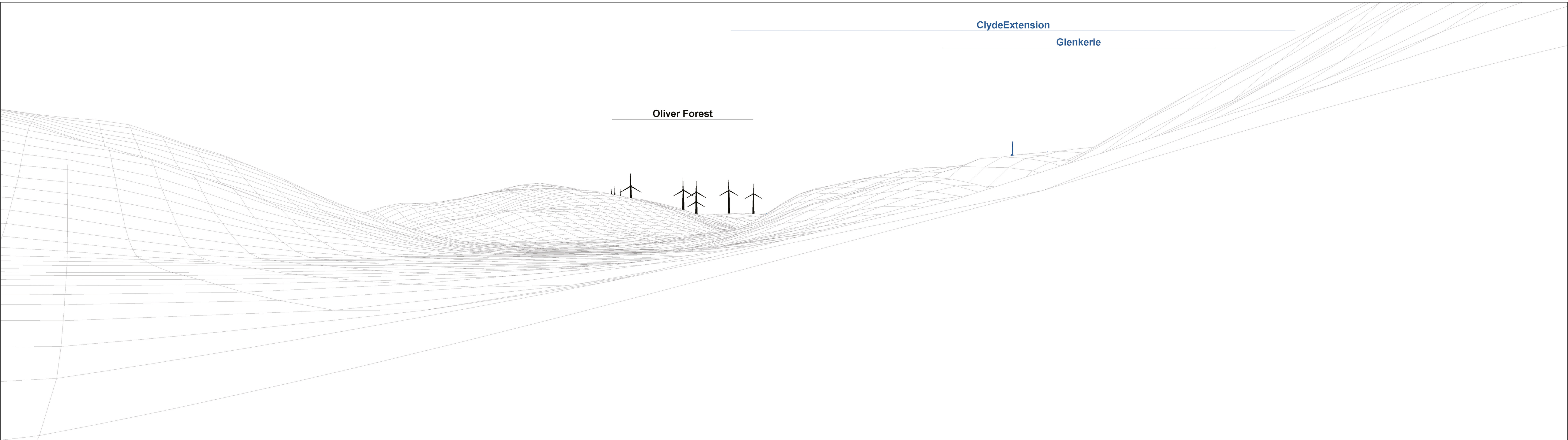
## CURRENT VIEW



Photo showing current view.

# Viewpoint 6: A701 by Stanhope

## WIREFRAME



Wireframe showing current proposed layout.  
Based on current proposal of 10 @ 250m to blade tip height.

## Viewpoint 6: A701 by Stanhope

---

### PREDICTED VIEW



Photomontage showing current proposed layout.  
Based on current proposal of 10 @ 250m to blade tip height.

# Viewpoint 8: Tweedsmuir Bridge

---

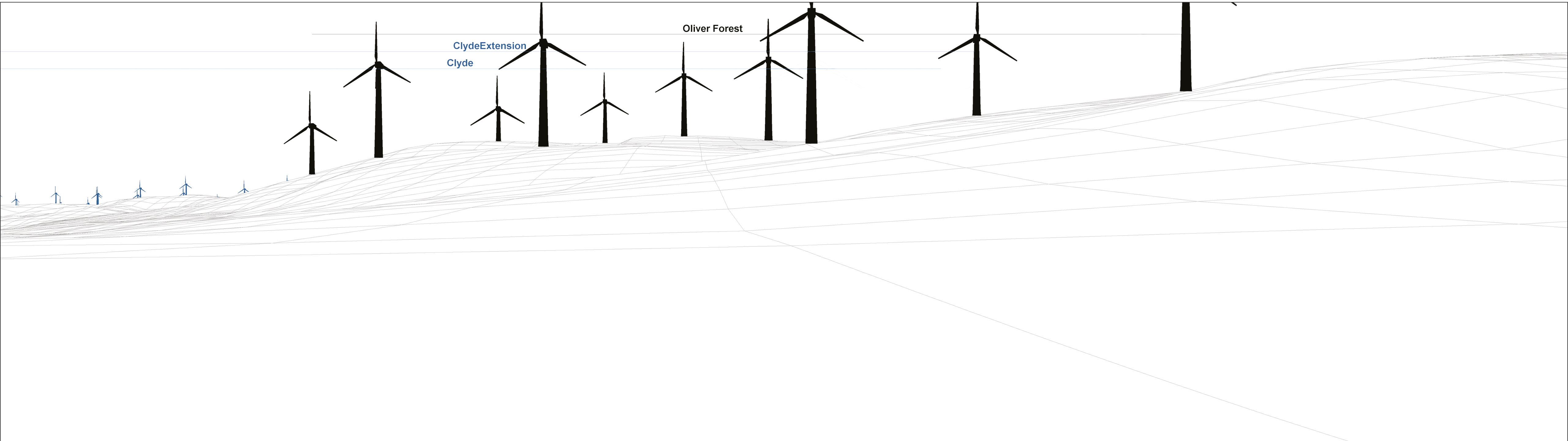
## CURRENT VIEW



Photo showing current view.

# Viewpoint 8: Tweedsmuir Bridge

## WIREFRAME



Wireframe showing current proposed layout.  
Based on current proposal of 10 @ 250m to blade tip height.



# Viewpoint 8: Tweedsmuir Bridge

---

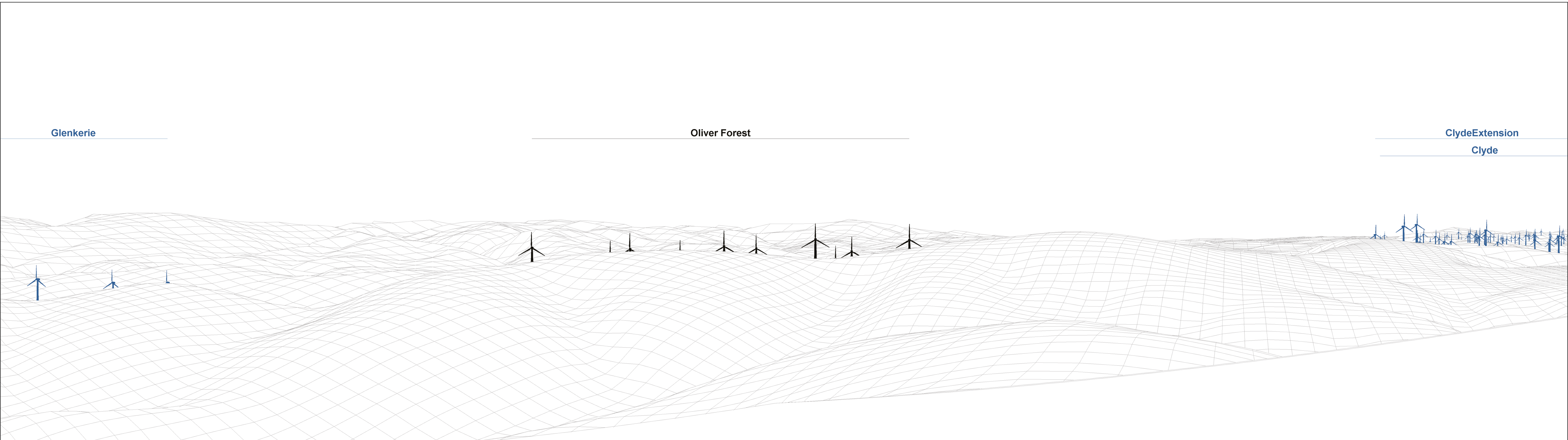
## PREDICTED VIEW



Photomontage showing current proposed layout.  
Based on current proposal of 10 @ 250m to blade tip height.

# Viewpoint 16: Culter Fell

## WIREFRAME\*



Wireframe showing current proposed layout.  
Based on current proposal of 10 @ 250m to blade tip height.

\* A wireframe is only available from this viewpoint as weather conditions prevented photographs to be taken safely in time for the exhibition. A full set of visuals will be available at the next exhibition and for submission of any future application.

[Return to the Virtual Exhibition](#)