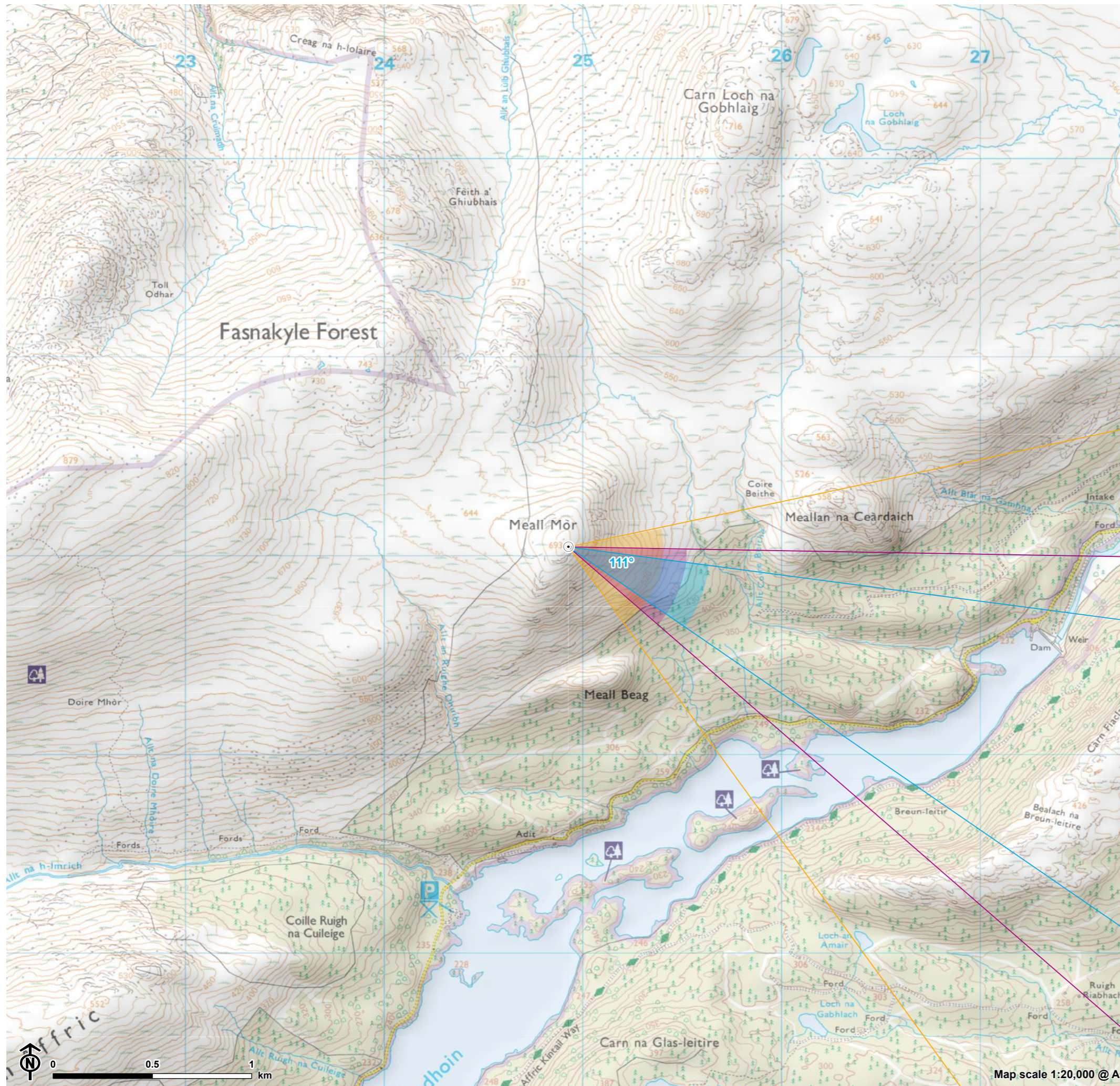


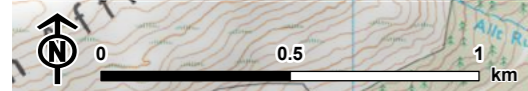
Figure: 6.22
VP9: Meall Mòr, above Glen Affric



- Site boundary
- Turbine
- ⊙ Viewpoint
- ∠ 27° Field of View
- ∠ 39.6° Field of View
- ∠ 65.5° Field of View

AOD: 689 m
E: 224928 N: 828045
Nearest Loch Liath Turbine: 7
Distance to nearest turbine: 13.32 km

The viewpoint is located at the summit of Meall Mòr, to the west of Glen Affric. The viewpoint can be accessed from the east, from the minor road that passes south-west into Glen Affric from Strathglass. From the layby near the cattle grid (approximately 1.6km to the south-west of the Fasnakyle Power Station), pass south-west through forestry plantation for approximately 6km, before passing north out of the plantation towards the moorland summit.



Map scale 1:20,000 @ A3

Extent of 50mm single frame used to construct panorama



Photomontage

OS reference: 224928E 828045N
 Distance to nearest turbine: 13.32 km

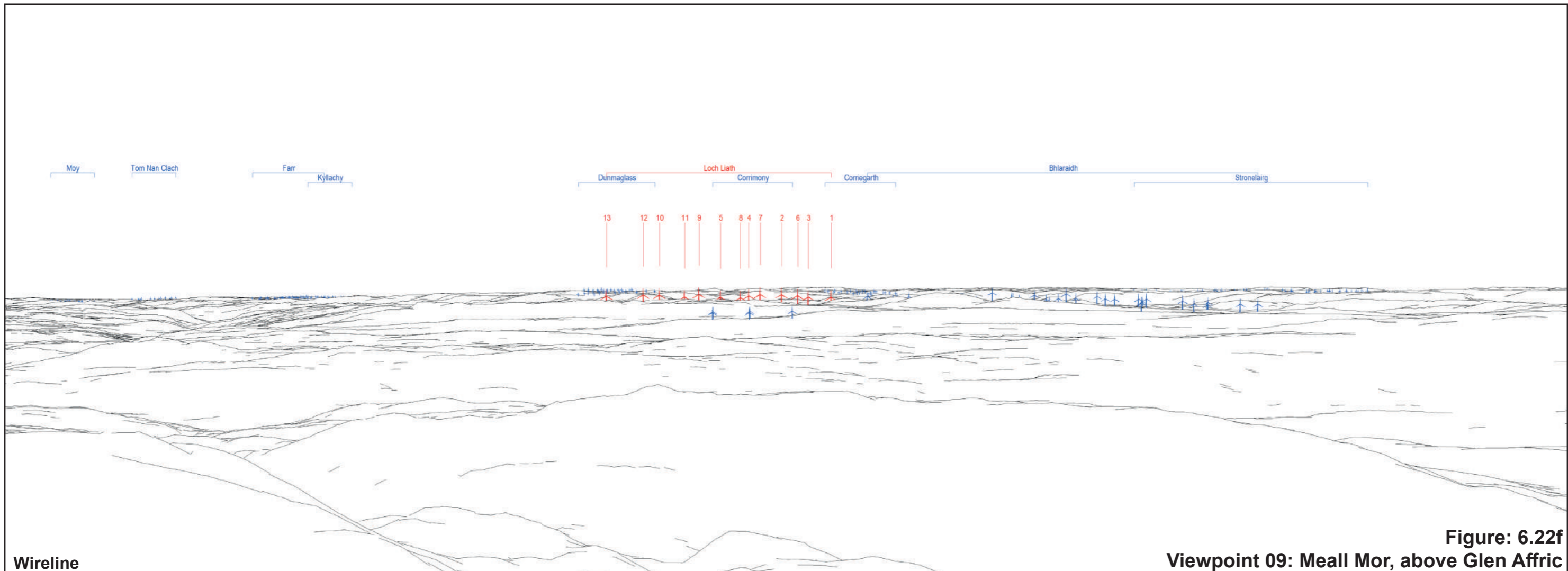
Camera: Nikon D750
 Focal Length: 50mm vertical (27°) x 28mm horizontal (65.5°)
 Camera height: 1.5m

Photography Date: 19/10/2022
 Photography Time: 13:59:00

The images contained on this page and the following page are not representative of scale and distance from the actual viewpoint and show the wind farm development in its wider landscape context only.



Existing View

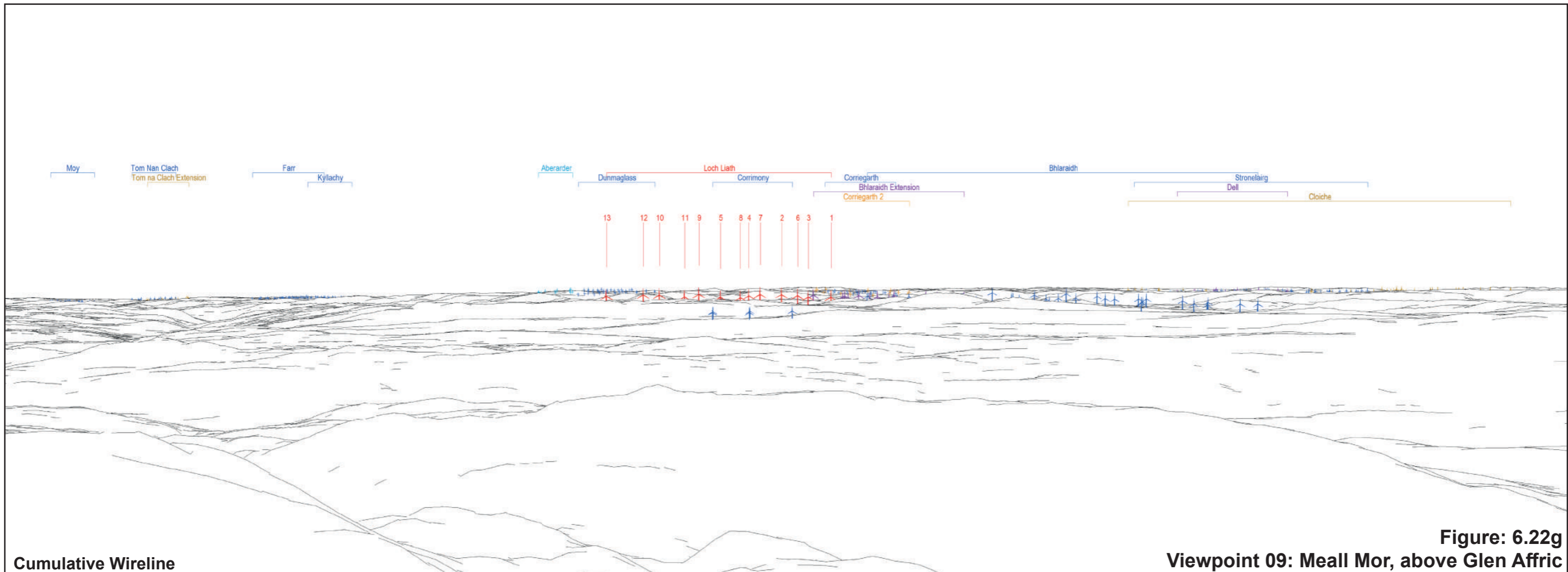


Wireline

Figure: 6.22f
Viewpoint 09: Meall Mor, above Glen Affric



Existing View



Cumulative Wireline

Figure: 6.22g
Viewpoint 09: Meall Mor, above Glen Affric



Photomontage

OS reference: 224928E 828045N
Distance to nearest turbine: 13.32 km

Camera: Nikon D750
Focal Length: 50mm
Camera height: 1.5m

Photography Date: 19/10/2022
Photography Time: 13:59:00

Loch Liath Wind Farm

Figure: 6.22h

When viewed at a comfortable arm's length (approx. 500mm), this printed image is representative of our detailed central vision, but is not representative of scale and distance.

Viewpoint 09: Meall Mor, above Glen Affric



Photomontage

OS reference: 224928E 828045N
Distance to nearest turbine: 13.32 km

Camera: Nikon D750
Focal Length: 75mm
Camera height: 1.5m

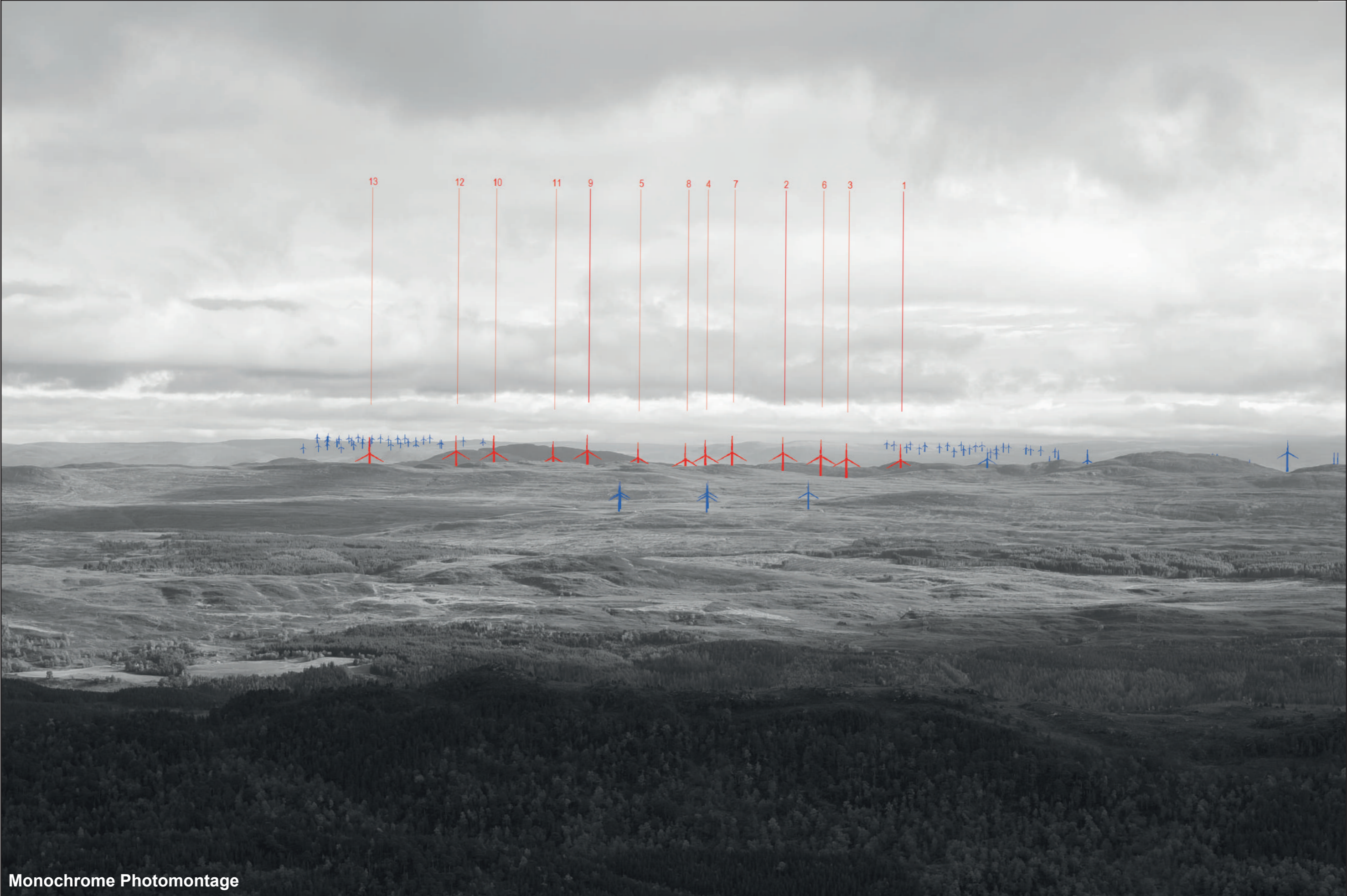
Photography Date: 19/10/2022
Photography Time: 13:59:00

Loch Liath Wind Farm

Figure: 6.22i

This image should be viewed at a comfortable arm's length (approx. 500mm)

Viewpoint 09: Meall Mor, above Glen Affric



Monochrome Photomontage

OS reference: 224928E 828045N
 Distance to nearest turbine: 13.32 km

Camera: Nikon D750
 Focal Length: 75mm
 Camera height: 1.5m

Photography Date: 19/10/2022
 Photography Time: 13:59:00

Loch Liath Wind Farm

Figure: 6.22j

This image should be viewed at a comfortable arm's length (approx. 500mm)

Viewpoint 09: Meall Mor, above Glen Affric