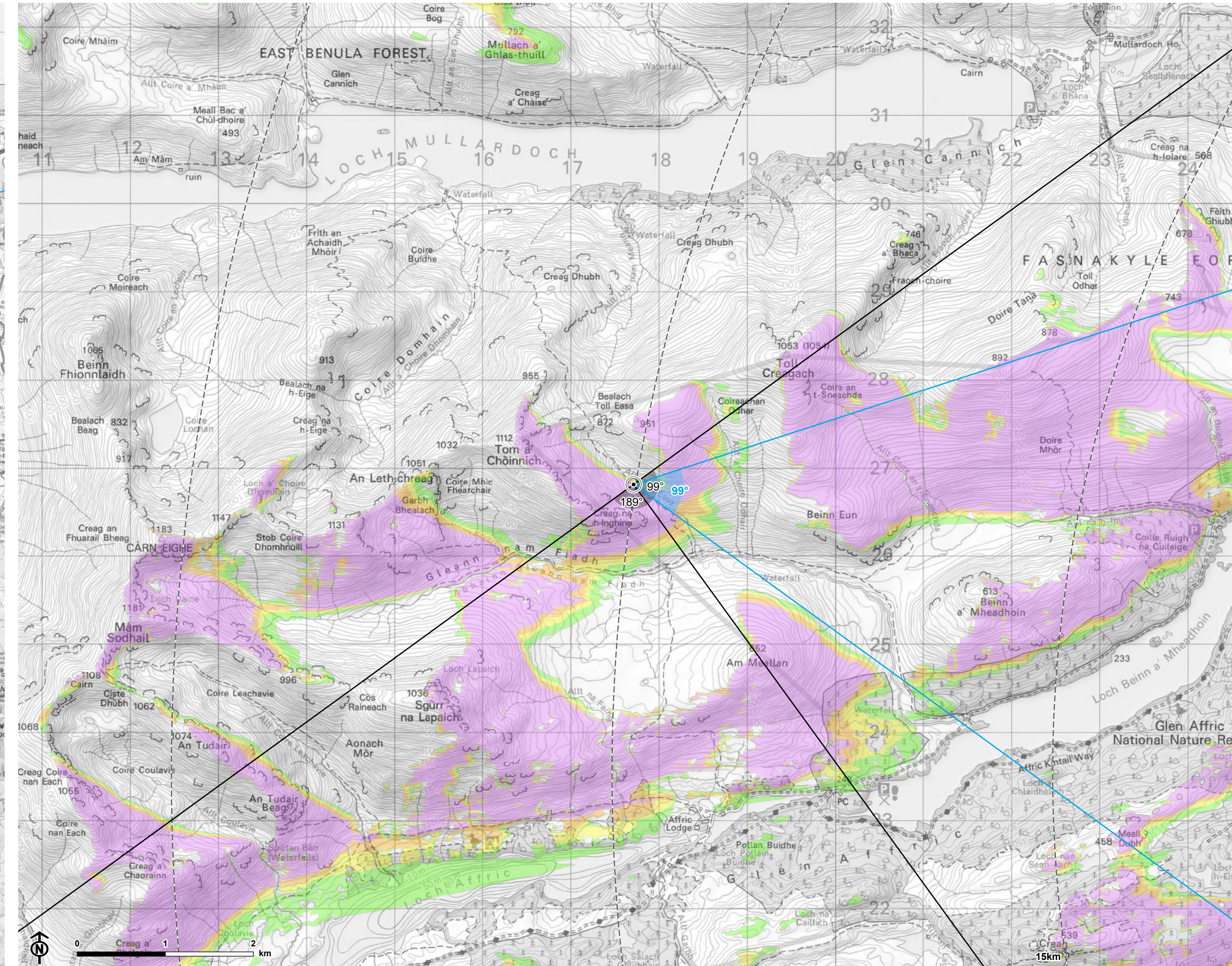


Contains Ordnance Survey data © Crown copyright and database right



© Crown copyright and database rights Ordnance Survey 0100031673

Loch Liath Wind Farm
for Loch Liath Wind Farm Ltd



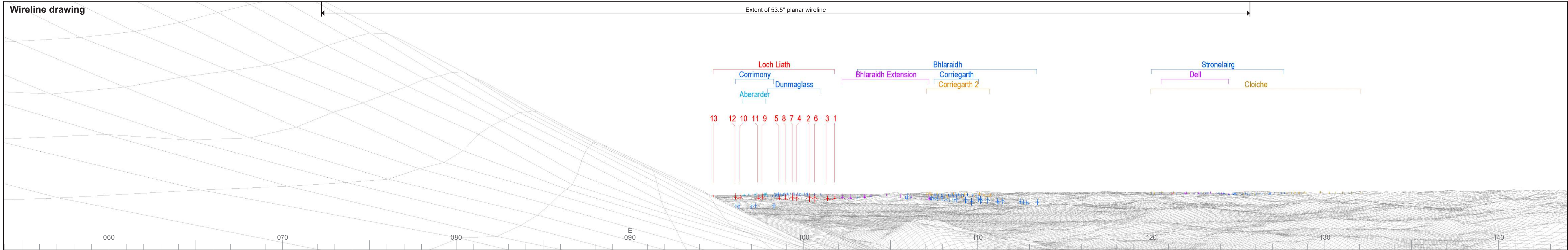
Figure: 6.36
WLA6: Bealach Toll Easa

- Site boundary
- Turbine
- 5km intervals from outermost turbines
- LVIA study area 45km from outermost turbines
- Theoretical turbine visibility**
- 1-4 turbines visible
- 5-7 turbines visible
- 8-10 turbines visible
- 11-13 turbines visible
- Wind farm (by status)**
- Operational
- Under construction
- Consented
- Appeal/public inquiry
- Application submitted
- Design/scoping
- 53.5° field of view
- 90° field of view

Notes:
The ZTV is calculated to turbine tip height (180-200m) from a viewing height of 2m above ground level. The terrain model assumes bare ground and is derived from OS Terrain 5 height data (obtained from Emapsite in November 2022). Earth curvature and atmospheric refraction have been taken into account. The ZTV was calculated using ArcMap 10.8.1 software.



CB: EB:wingfield_h_LUC 11057 Loch Liath LVIA 24/03/2023
Source: Statkraft, LUC



© Crown copyright and database rights 2023 Ordnance Survey data. Licence number: 0100031673

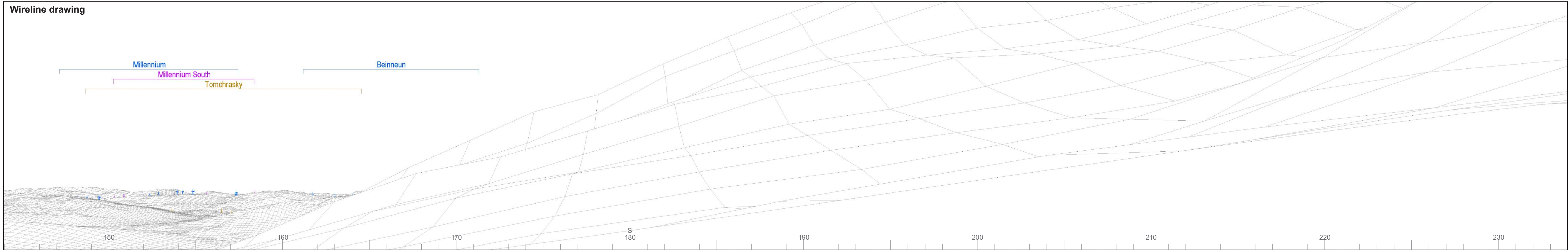


OS reference: 217713E 826810N
 AOD: 722 m
 Direction of view: 99°
 Nearest turbine: 20 km

Horizontal field of view: 90° (cylindrical projection)
 Principal distance: 522 mm
 Paper size: 841 x 297 mm (half A1)
 Correct printed image size: 820 x 260 mm

Wind Farm Developments key
 (by status):

Proposed scheme Application
 Operational
 Under construction
 Consented



© Crown copyright and database rights 2023 Ordnance Survey data. Licence number: 0100031673

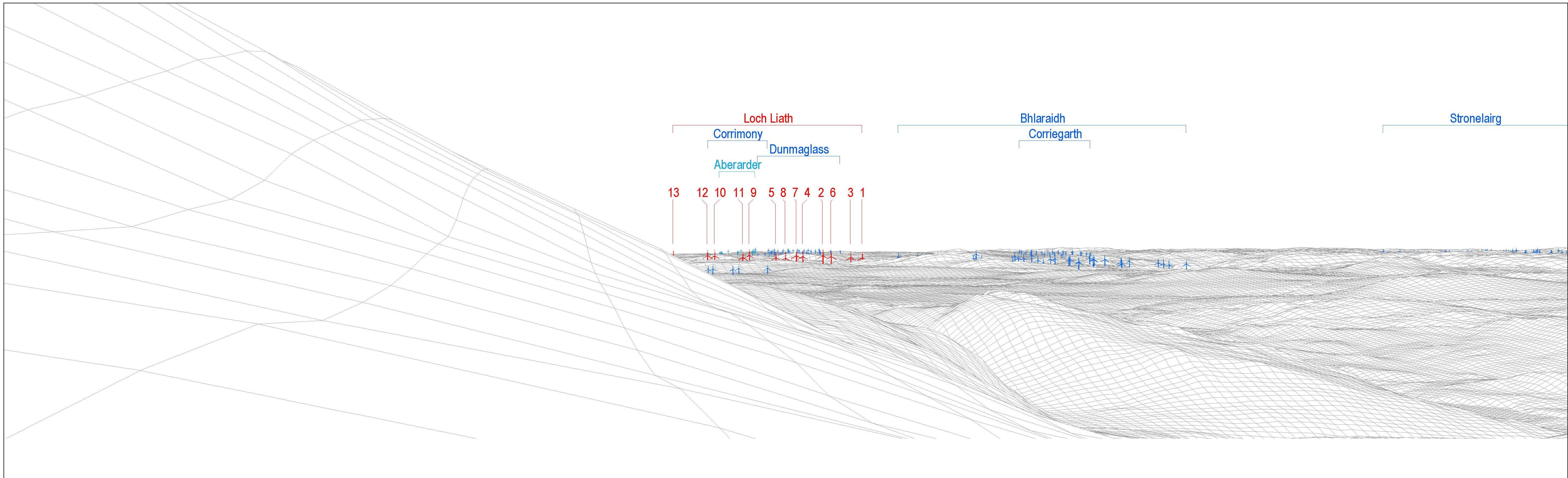


OS reference: 217713E 826810N
 AOD: 722 m
 Direction of view: 189°
 Nearest turbine: 20 km

Horizontal field of view: 90° (cylindrical projection)
 Principal distance: 522 mm
 Paper size: 841 x 297 mm (half A1)
 Correct printed image size: 820 x 260 mm

Wind Farm Developments key
 (by status):

- Proposed scheme Application
- Operational
- Under construction
- Consented



Wireline drawing

View flat at a comfortable arm's length



OS reference: 217713E 826810N
 AOD: 722 m
 Direction of view: 99°
 Nearest turbine: 20 km

Horizontal field of view: 53.5° (planar projection)
 Principal distance: 812.5 mm
 Paper size: 841 x 297 mm (half A1)
 Correct printed image size: 820 x 260 mm

Wind Farm Developments key
 (by status):

Proposed scheme
 Operational
 Under construction

© Crown copyright and database rights 2023 Ordnance Survey data. Licence number: 0100031673