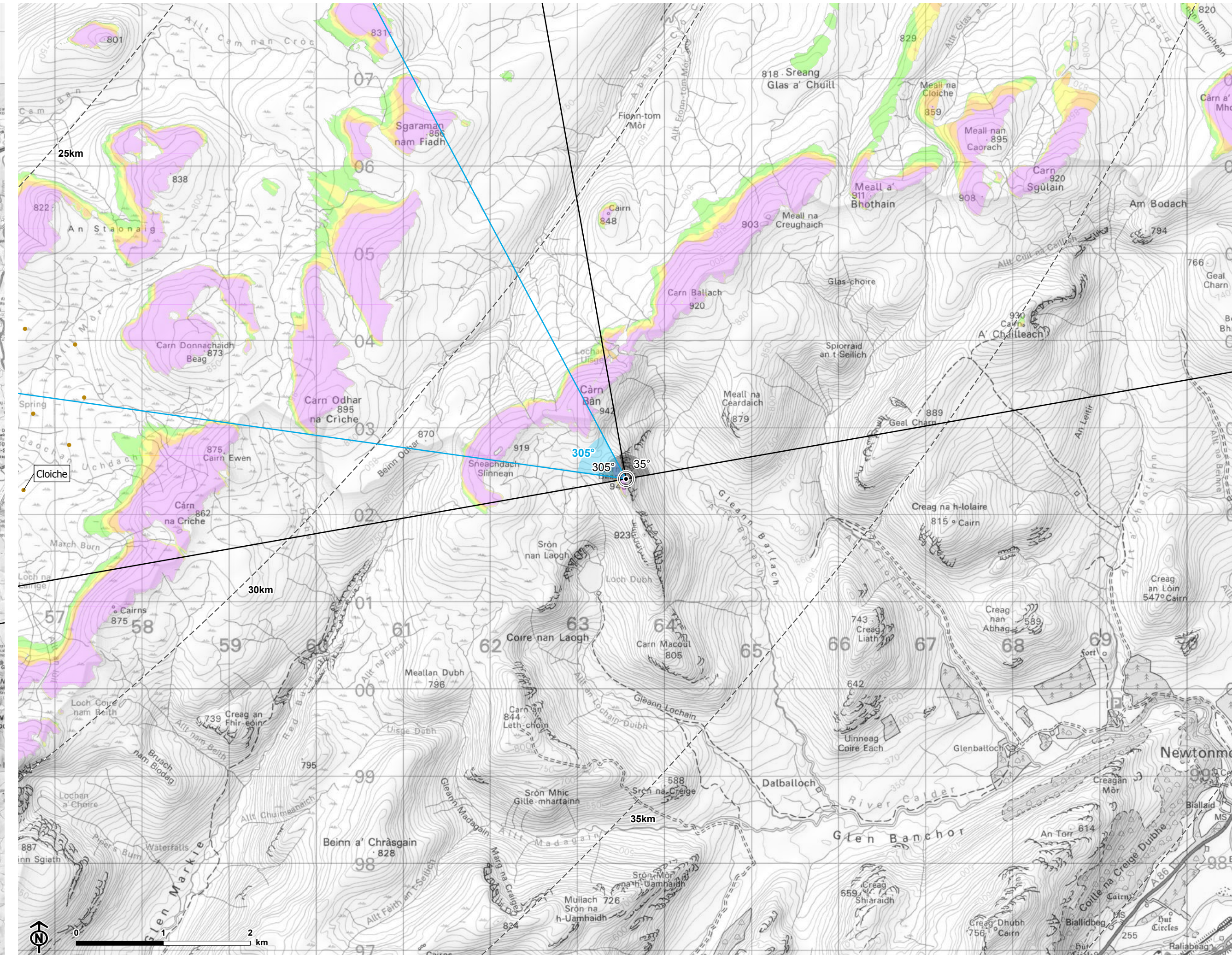


Contains Ordnance Survey data © Crown copyright and database right



© Crown copyright and database rights Ordnance Survey 0100031673

Loch Liath Wind Farm
for Loch Liath Wind Farm Ltd



Figure: 6.33
VP20: Carn Dearg

- Site boundary
- Turbine
- 5km intervals from outermost turbines
- - - LRIA study area 45km from outermost turbines
- Theoretical turbine visibility**
- 1-4 turbines visible
- 5-7 turbines visible
- 8-10 turbines visible
- 11-13 turbines visible
- Wind farm (by status)**
- Operational
- Under construction
- Consented
- Appeal/public inquiry
- Application submitted
- ∠ 53.5° field of view
- ∠ 90° field of view

Notes:
The ZTV is calculated to turbine tip height (180-200m) from a viewing height of 2m above ground level. The terrain model assumes bare ground and is derived from OS Terrain 5 height data (obtained from Emapsite in November 2022). Earth curvature and atmospheric refraction have been taken into account. The ZTV was calculated using ArcMap 10.8.1 software.

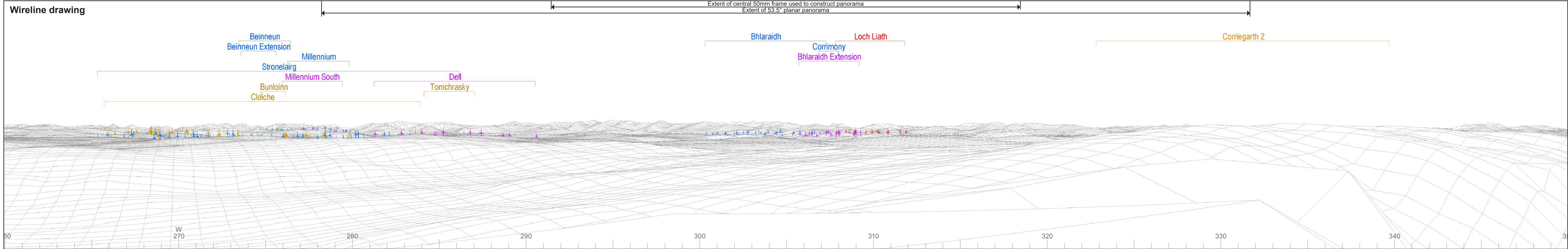


CB: EB:wingfield_h_LUC 11057 Loch Liath LVIA 13/04/2023 Source: Statkraft, LUC



Baseline photograph

This image provides landscape and visual context only



Wireline drawing

Extent of central 50mm frame used to construct panorama
Extent of 53.5° planar panorama

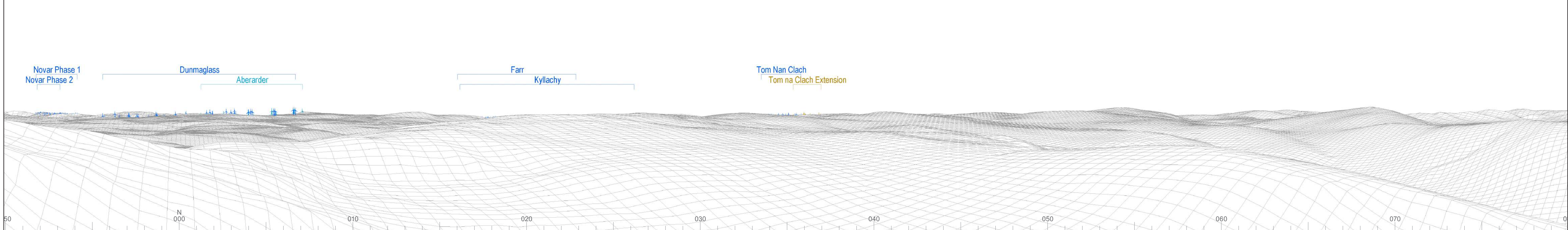
© Crown copyright and database rights 2023 Ordnance Survey data. Licence number: 0100031673

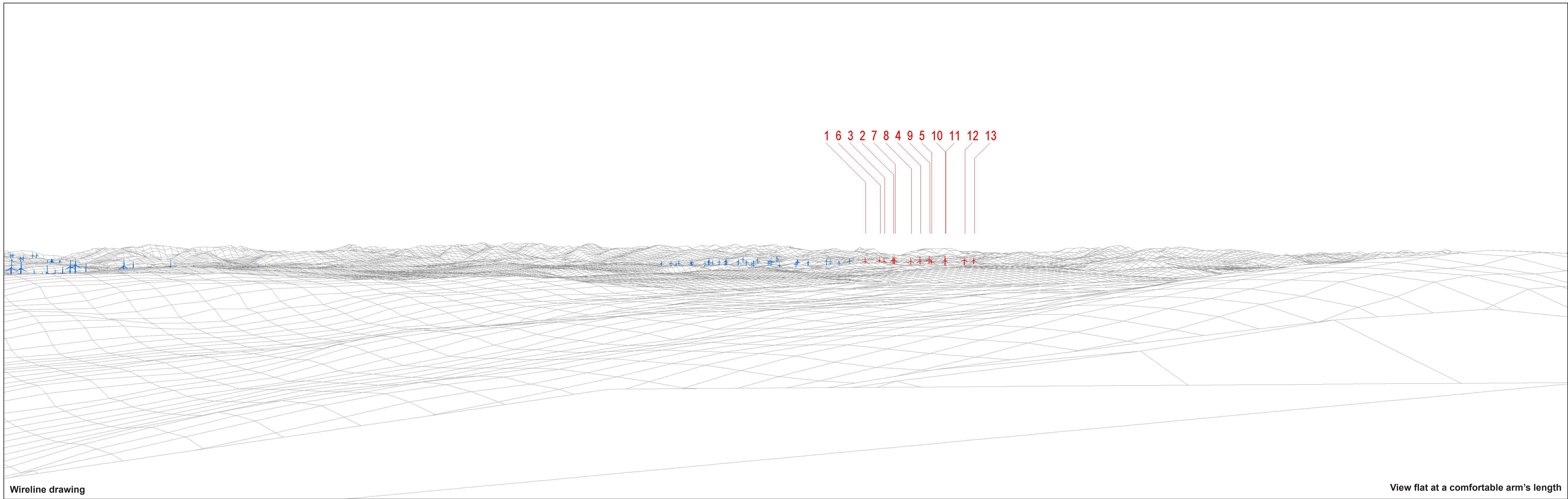


Baseline photograph

This image provides landscape and visual context only

Wireline drawing





Wireline drawing

View flat at a comfortable arm's length

© Crown copyright and database rights 2023 Ordnance Survey data. Licence number: 0100031673



OS reference: 263560E 802406N
 AOD: 941 m
 Direction of view: 305°
 Nearest turbine: 32.45 km

Horizontal field of view: 53.5° (planar projection)
 Principal distance: 812.5 mm
 Paper size: 841 x 297 mm (half A1)
 Correct printed image size: 820 x 260 mm

Wind Farm Developments key
 (by status):

Proposed scheme
 Operational

Loch Liath Wind Farm
 Figure: 6.33c
 Viewpoint 20: Carn Dearg



Photomontage

View flat at a comfortable arm's length



OS reference: 263560E 802406N
AOD: 941 m
Direction of view: 305°
Nearest turbine: 32.45 km

Horizontal field of view: 53.5° (planar projection)
Principal distance: 812.5 mm
Paper size: 841 x 297 mm (half A1)
Correct printed image size: 820 x 260 mm

Camera: Nikon D750
Lens: 50mm Fixed Focal Length
Camera height: 1.5 m

Photography Date: 12/07/2020
Photography Time: 12:48:00

Loch Liath Wind Farm
Figure: 6.33d
Viewpoint 20: Carn Dearg