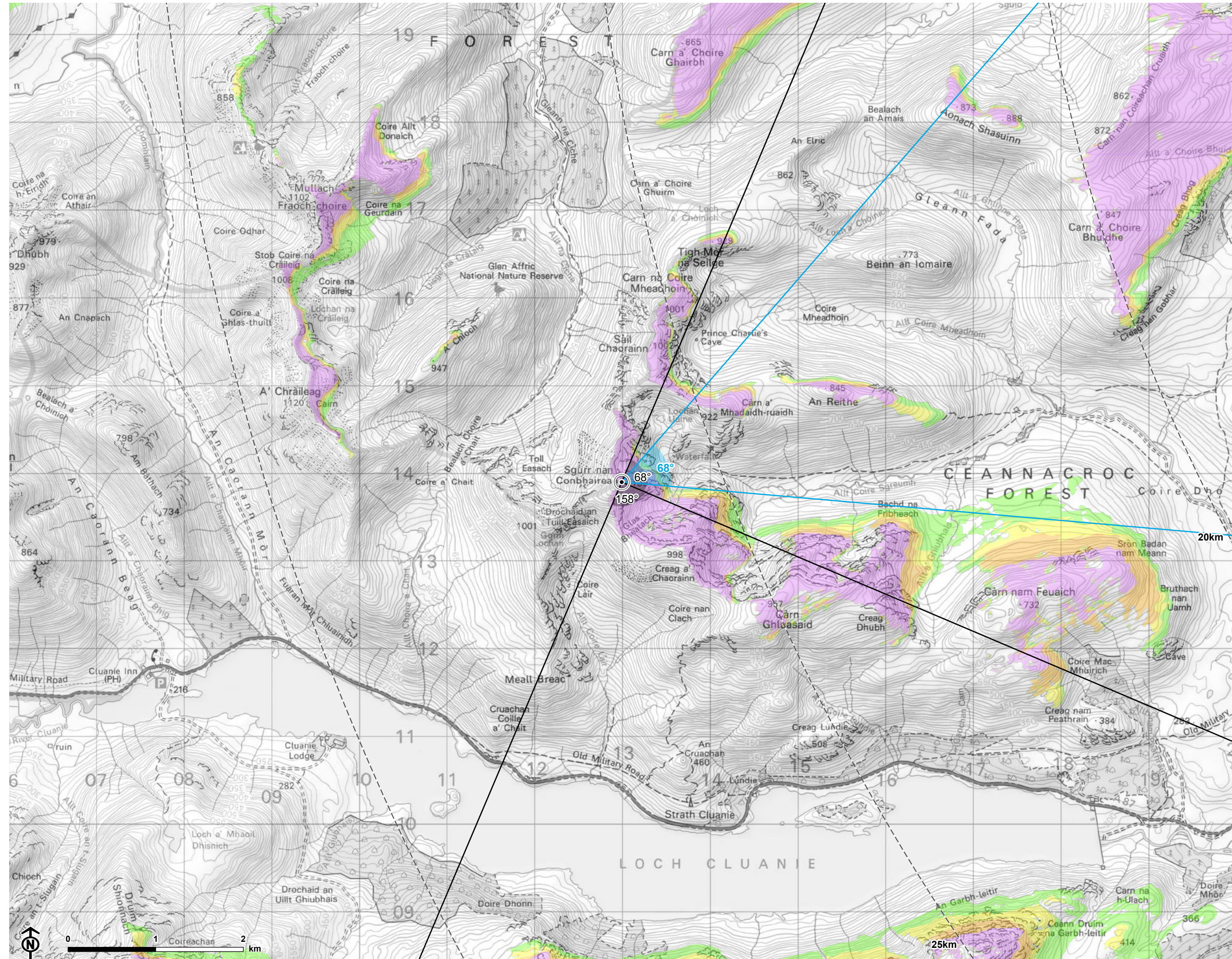


Contains Ordnance Survey data © Crown copyright and database right



© Crown copyright and database rights Ordnance Survey 0100031673

Loch Liath Wind Farm  
for Loch Liath Wind Farm Ltd



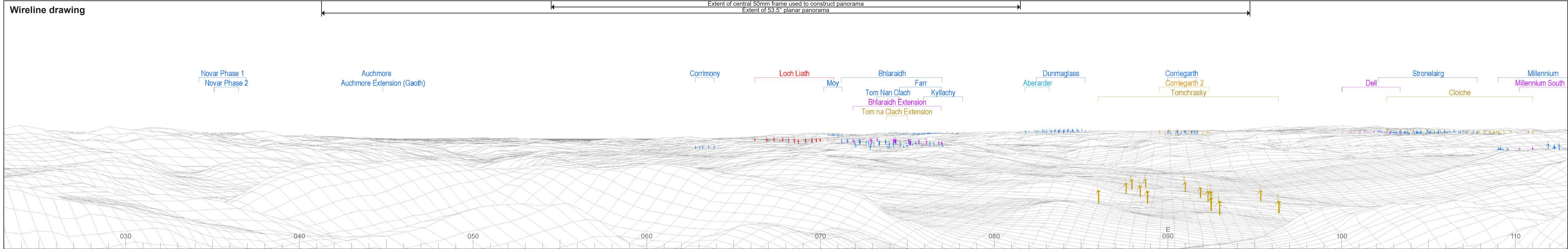
Figure 6.32  
VP19: Sgurr nan Conbhairrean

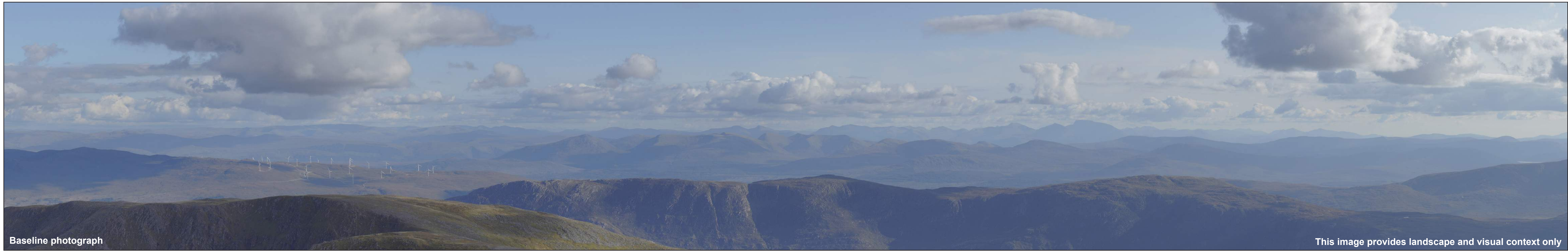
- Site boundary
- Turbine
- - - 5km intervals from outermost turbines
- - - LVIA study area 45km from outermost turbines
- Theoretical turbine visibility**
- 1-4 turbines visible
- 5-7 turbines visible
- 8-10 turbines visible
- 11-13 turbines visible
- Wind farm (by status)**
- Operational
- Under construction
- Consented
- Appeal/public inquiry
- Application submitted
- Design/scoping
- ∠ 53.5° field of view
- ∠ 90° field of view

**Notes:**  
The ZTV is calculated to turbine tip height (180-200m) from a viewing height of 2m above ground level. The terrain model assumes bare ground and is derived from OS Terrain 5 height data (obtained from Emapsite in November 2022). Earth curvature and atmospheric refraction have been taken into account. The ZTV was calculated using ArcMap 10.8.1 software.



CB: EB-windfield\_h\_LUC 11057 Loch Liath LVIA 21/03/2023  
Source: Statkraft, LUC

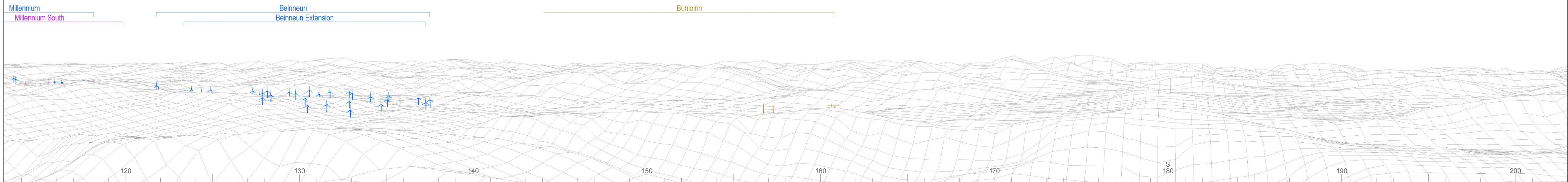




Baseline photograph

This image provides landscape and visual context only

Wireline drawing



OS reference: 212991E 813895N  
 AOD: 1102m  
 Direction of view: 158°  
 Nearest turbine: 26.1 km

Horizontal field of view: 90° (cylindrical projection)  
 Principal distance: 522 mm  
 Paper size: 841 x 297 mm (half A1)  
 Correct printed image size: 820 x 260 mm

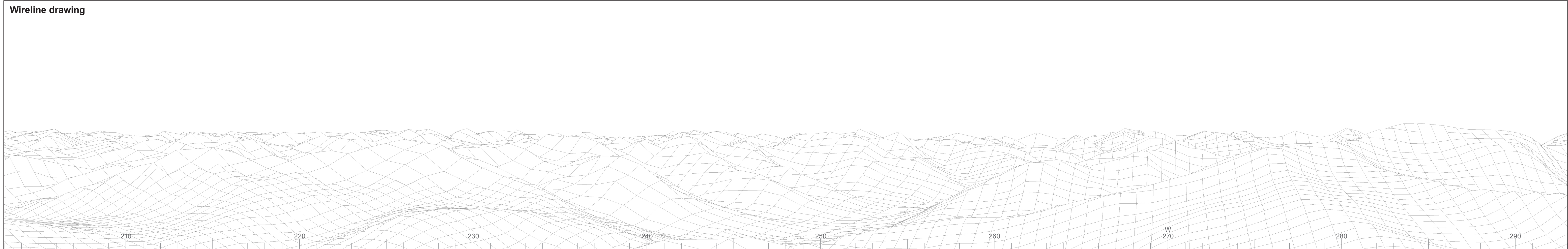
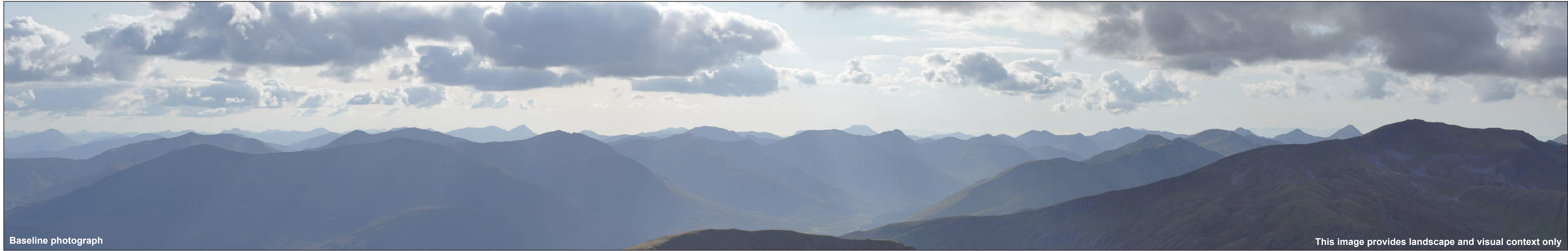
Camera: 50mm Fixed Focal Length  
 Lens: 50mm Fixed Focal Length  
 Camera height: 1.5 m

Photography Date: 19/09/2020  
 Photography Time: 16:48:00

Wind Farm Developments key (by status):

- Proposed scheme
- Operational
- Under construction
- Consented
- Application
- Scoping
- Appeal/PLI

© Crown copyright and database rights 2023 Ordnance Survey data. Licence number: 0100031673



OS reference: 212991E 813895N  
 AOD: 1102m  
 Direction of view: 248°  
 Nearest turbine: 26.1 km

Horizontal field of view: 90° (cylindrical projection)  
 Principal distance: 522 mm  
 Paper size: 841 x 297 mm (half A1)  
 Correct printed image size: 820 x 260 mm

Camera: 50mm Fixed Focal Length  
 Lens: 50mm Fixed Focal Length  
 Camera height: 1.5 m

Photography Date: 19/09/2020  
 Photography Time: 16:48:00

Wind Farm Developments key  
 (by status):

Proposed scheme Application  
 Operational Scoping  
 Under construction Appeal/PLI  
 Consented

Loch Liath Wind Farm

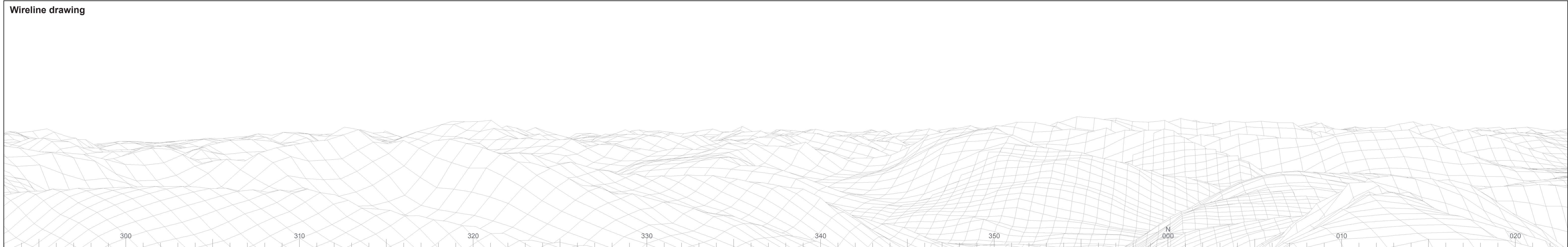
Figure: 6.32c

Viewpoint 19: Sgurr nan Conbhairean



Baseline photograph

This image provides landscape and visual context only



Wireline drawing

© Crown copyright and database rights 2023 Ordnance Survey data. Licence number: 0100031673



OS reference: 212991E 813895N  
 AOD: 1102m  
 Direction of view: 338°  
 Nearest turbine: 26.1 km

Horizontal field of view: 90° (cylindrical projection)  
 Principal distance: 522 mm  
 Paper size: 841 x 297 mm (half A1)  
 Correct printed image size: 820 x 260 mm

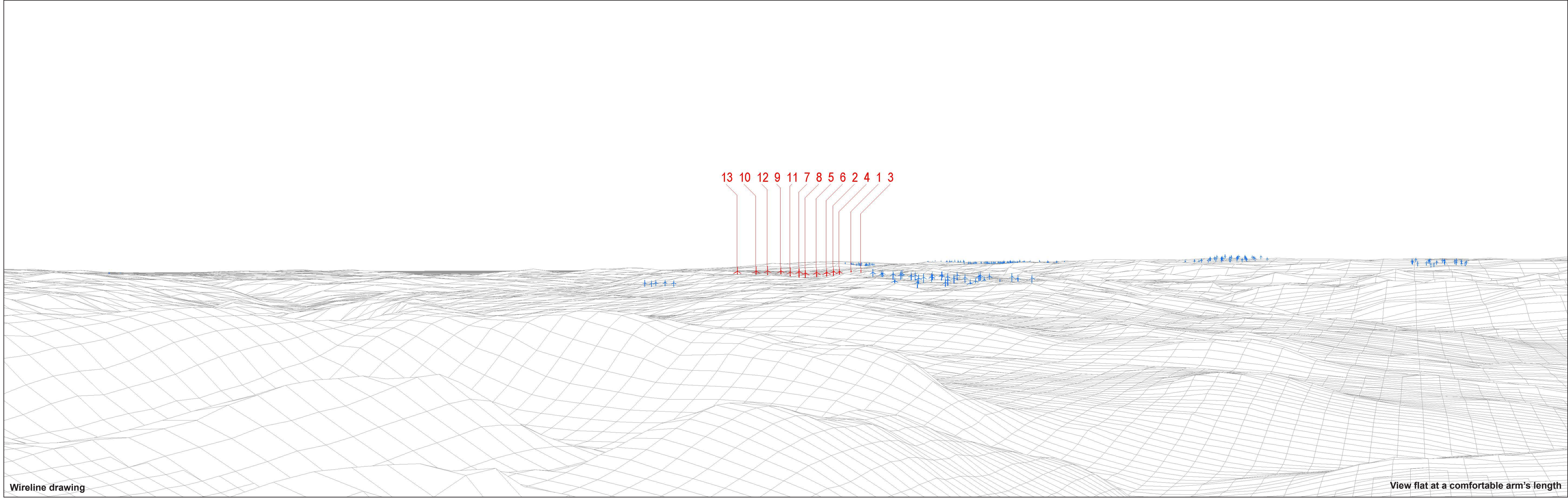
Camera: 50mm Fixed Focal Length  
 Lens: 50mm Fixed Focal Length  
 Camera height: 1.5 m

Photography Date: 19/09/2020  
 Photography Time: 16:48:00

Wind Farm Developments key  
 (by status):

Proposed scheme Application  
 Operational Scoping  
 Under construction Appeal/PLI  
 Consented

© Crown copyright and database rights 2023 Ordnance Survey data. Licence number: 0100031673



Wireline drawing

View flat at a comfortable arm's length



OS reference: 212991E 813895N  
AOD: 1102m  
Direction of view: 68°  
Nearest turbine: 26.1 km

Horizontal field of view: 53.5° (planar projection)  
Principal distance: 812.5 mm  
Paper size: 841 x 297 mm (half A1)  
Correct printed image size: 820 x 260 mm

Wind Farm Developments key  
(by status):

Proposed scheme  
Operational

Loch Liath Wind Farm  
Figure: 6.32e  
Viewpoint 19: Sgurr nan Conbhairan



Photomontage

View flat at a comfortable arm's length



OS reference: 212991E 813895N  
AOD: 1102m  
Direction of view: 68°  
Nearest turbine: 26.1 km

Horizontal field of view: 53.5° (planar projection)  
Principal distance: 812.5 mm  
Paper size: 841 x 297 mm (half A1)  
Correct printed image size: 820 x 260 mm

Camera: 50mm Fixed Focal Length  
Lens: 50mm Fixed Focal Length  
Camera height: 1.5 m

Photography Date: 19/09/2020  
Photography Time: 16:48:00

Loch Liath Wind Farm  
**Figure: 6.32f**  
**Viewpoint 19: Sgurr nan Conbhairean**