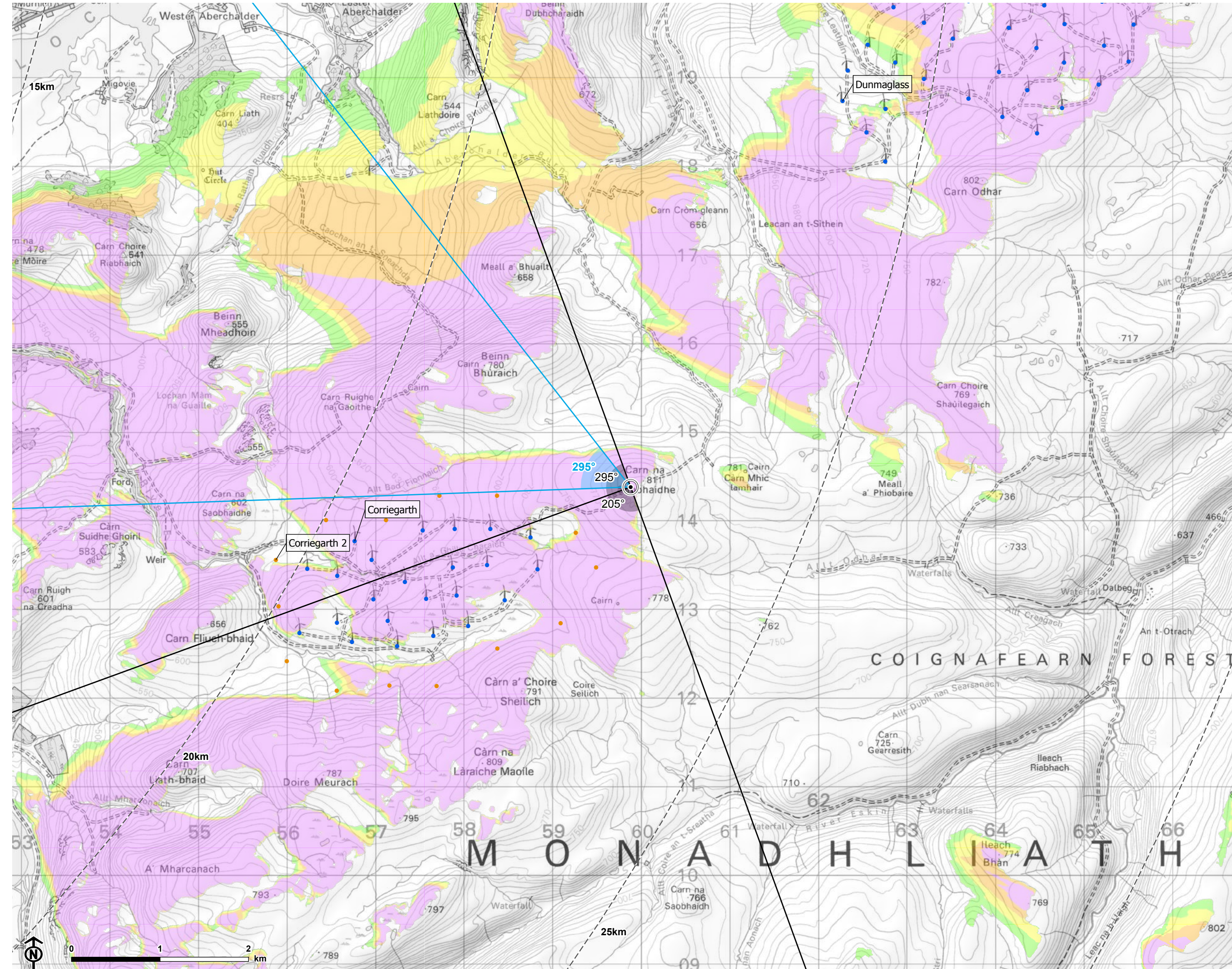


Contains Ordnance Survey data © Crown copyright and database right



© Crown copyright and database rights Ordnance Survey 0100031673

Loch Liath Wind Farm
for Loch Liath Wind Farm Ltd



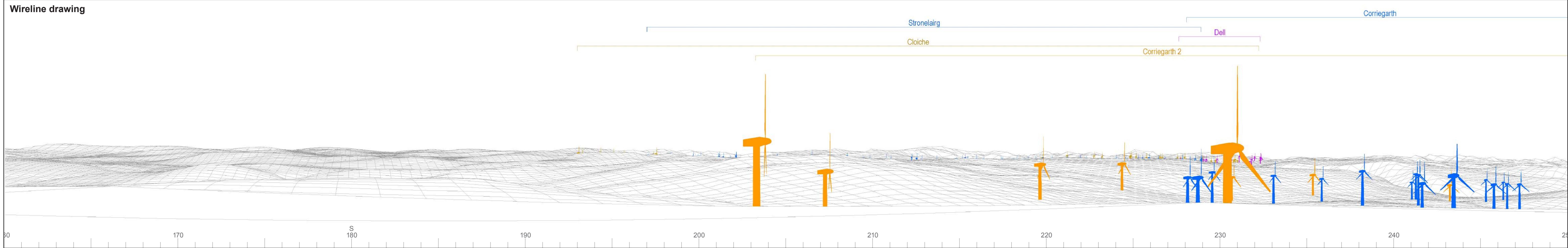
Figure: 6.30
VP17: Carn na Saobhaidhe

- Site boundary
- Turbine
- 5km intervals from outermost turbines
- LVIA study area 45km from outermost turbines
- Theoretical turbine visibility**
- 1-4 turbines visible
- 5-7 turbines visible
- 8-10 turbines visible
- 11-13 turbines visible
- Wind farm (by status)**
- Operational
- Under construction
- Consented
- Appeal/public inquiry
- Application submitted
- ∨ 53.5° field of view
- ∨ 90° field of view

Notes:
The ZTV is calculated to turbine tip height (180-200m) from a viewing height of 2m above ground level. The terrain model assumes bare ground and is derived from OS Terrain 5 height data (obtained from Emapsite in November 2022). Earth curvature and atmospheric refraction have been taken into account. The ZTV was calculated using ArcMap 10.8.1 software.



CB: EB:wingfield_h_LUC 11057 Loch Liath LVIA 18/04/2023
Source: Statkraft, LUC



OS reference: 259881E 814377N
AOD: 810.4 m
Direction of view: 205°
Nearest turbine: 22.99 km

Horizontal field of view: 90° (cylindrical projection)
Principal distance: 522 mm
Paper size: 841 x 297 mm (half A1)
Correct printed image size: 820 x 260 mm

Camera: Sony ILCE-7RM3
Lens: 50mm Fixed Focal Length
Camera height: 1.5 m

Photography Date: 14/06/2021
Photography Time: 09:49:00

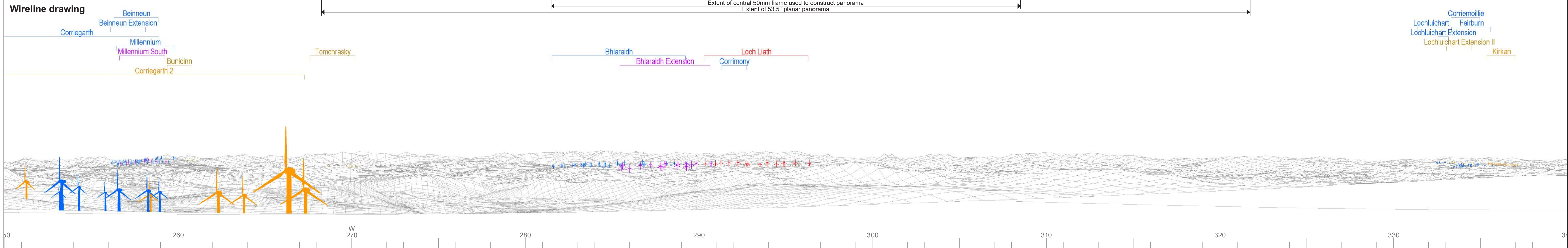
Wind Farm Developments key (by status):

Proposed scheme Application
Operational Scoping
Under construction Appeal/PLI
Consented



Baseline photograph

This image provides landscape and visual context only



OS reference: 259881E 814377N
 AOD: 810.4 m
 Direction of view: 295°
 Nearest turbine: 22.99 km

Horizontal field of view: 90° (cylindrical projection)
 Principal distance: 522 mm
 Paper size: 841 x 297 mm (half A1)
 Correct printed image size: 820 x 260 mm

Camera: Sony ILCE-7RM3
 Lens: 50mm Fixed Focal Length
 Camera height: 1.5 m

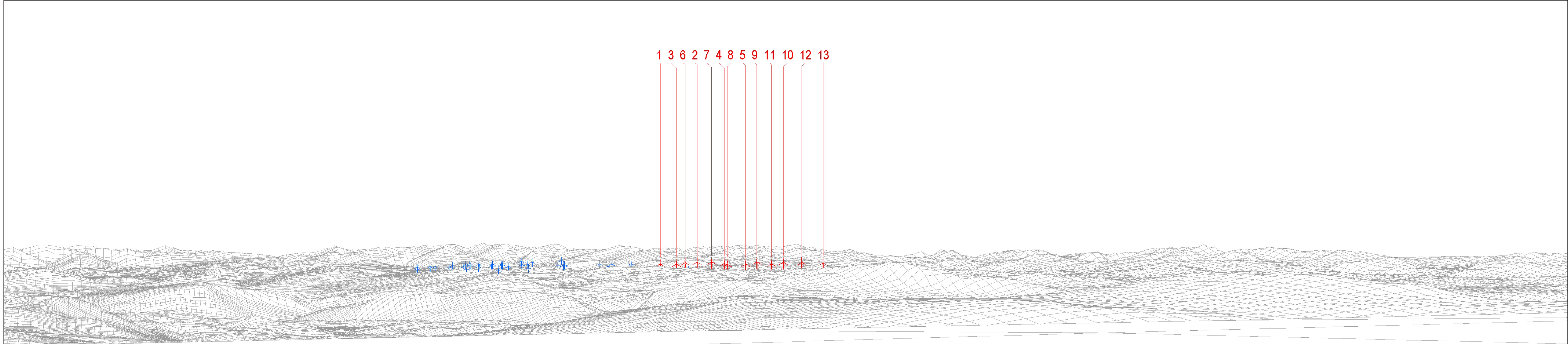
Photography Date: 14/06/2021
 Photography Time: 09:49:00

Wind Farm Developments key
 (by status):

Proposed scheme Application
 Operational Scoping
 Under construction Appeal/PLI
 Consented

Loch Liath Wind Farm
Figure: 6.30b
 Viewpoint 17: Carn na Saobhaidhe

© Crown copyright and database rights 2023 Ordnance Survey data. Licence number: 0100031673



1 3 6 2 7 4 8 5 9 11 10 12 13

Wireline drawing

View flat at a comfortable arm's length



OS reference: 259881E 814377N
 AOD: 810.4 m
 Direction of view: 295°
 Nearest turbine: 22.99 km

Horizontal field of view: 53.5° (planar projection)
 Principal distance: 812.5 mm
 Paper size: 841 x 297 mm (half A1)
 Correct printed image size: 820 x 260 mm

Wind Farm Developments key
 (by status):

Proposed scheme
 Operational

Loch Liath Wind Farm
 Figure: 6.30c
 Viewpoint 17: Carn na Saobhaidhe

© Crown copyright and database rights 2023 Ordnance Survey data. Licence number: 0100031673



Photomontage

View flat at a comfortable arm's length



OS reference: 259881E 814377N
AOD: 810.4 m
Direction of view: 295°
Nearest turbine: 22.99 km

Horizontal field of view: 53.5° (planar projection)
Principal distance: 812.5 mm
Paper size: 841 x 297 mm (half A1)
Correct printed image size: 820 x 260 mm

Camera: Sony ILCE-7RM3
Lens: 50mm Fixed Focal Length
Camera height: 1.5 m

Photography Date: 14/06/2021
Photography Time: 09:49:00

Loch Liath Wind Farm
Figure: 6.30d
Viewpoint 17: Carn na Saobhaidhe