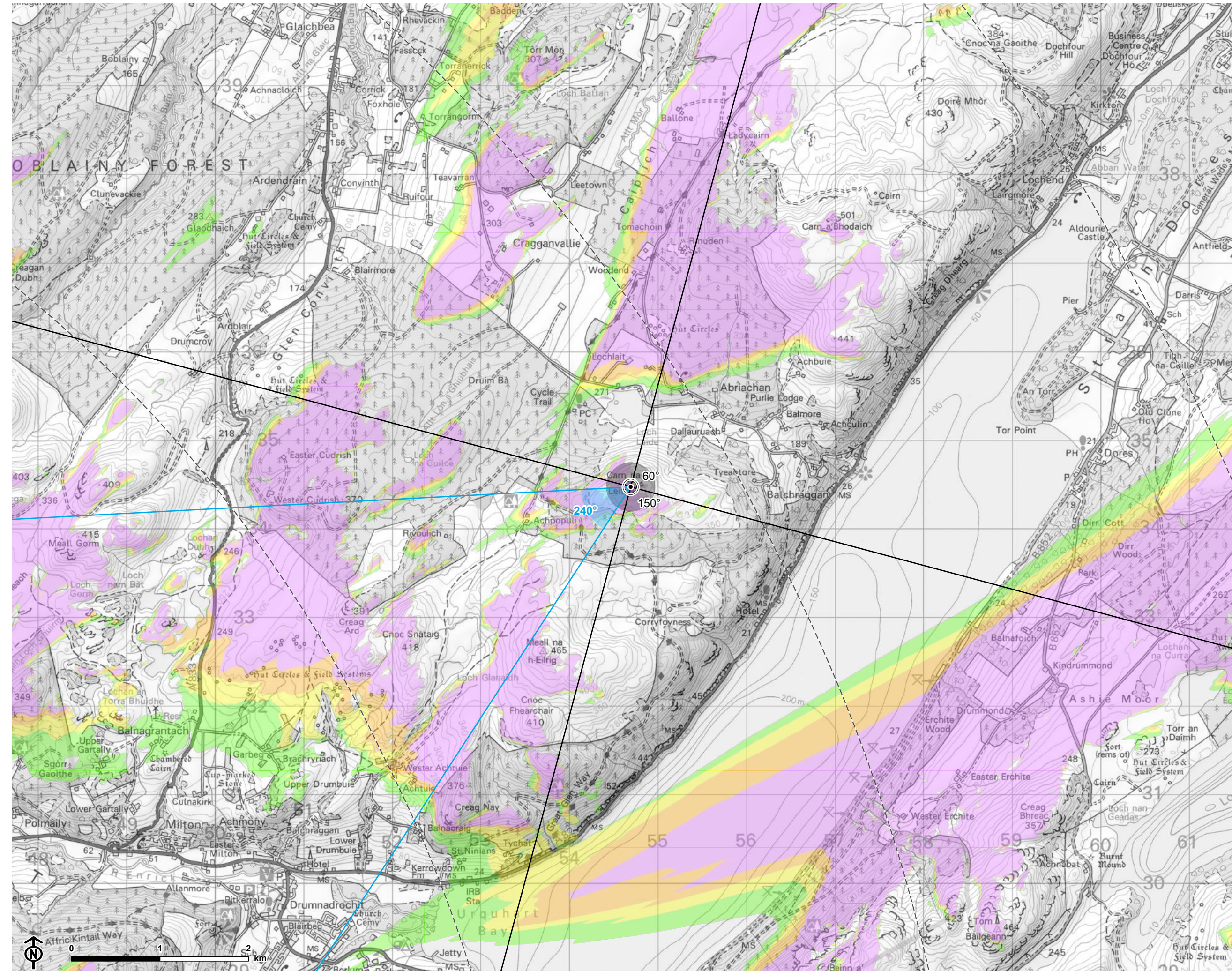


Contains Ordnance Survey data © Crown copyright and database right



© Crown copyright and database rights Ordnance Survey 0100031673

Loch Liath Wind Farm
for Loch Liath Wind Farm Ltd



Figure: 6.24
VP11: Carn na Leitire

- Site boundary
- Turbine
- 5km intervals from outermost turbines
- LVIA study area 45km from outermost turbines
- Theoretical turbine visibility**
- 1-4 turbines visible
- 5-7 turbines visible
- 8-10 turbines visible
- 11-13 turbines visible
- Wind farm (by status)**
- Operational
- Under construction
- Consented
- Appeal/public inquiry
- Application submitted
- Design/scoping
- ∨ 53.5° field of view
- ∨ 90° field of view

Notes:
The ZTV is calculated to turbine tip height (180-200m) from a viewing height of 2m above ground level. The terrain model assumes bare ground and is derived from OS Terrain 5 height data (obtained from Emapsite in November 2022). Earth curvature and atmospheric refraction have been taken into account. The ZTV was calculated using ArcMap 10.8.1 software.



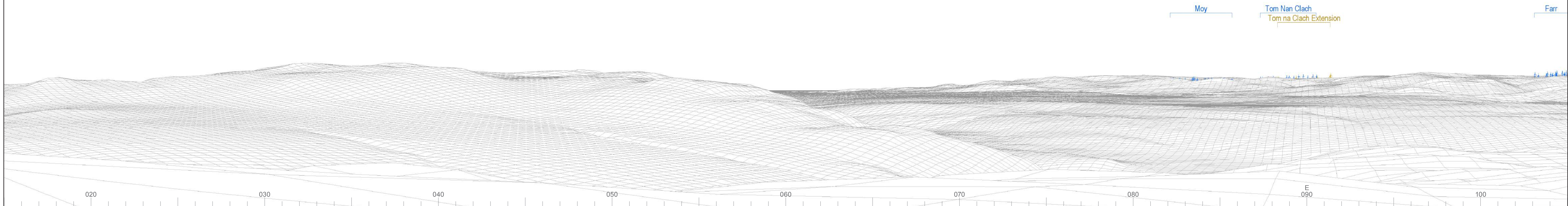
CB: EB:wingfield_h_LUC 11057 Loch Liath LVIA 21/03/2023
Source: Statkraft, LUC



Baseline photograph

This image provides landscape and visual context only

Wireline drawing



OS reference: 254693E 834470N
 AOD: 430.48 m
 Direction of view: 60°
 Nearest turbine: 18.88 km

Horizontal field of view: 90° (cylindrical projection)
 Principal distance: 522 mm
 Paper size: 841 x 297 mm (half A1)
 Correct printed image size: 820 x 260 mm

Camera: Nikon D750
 Lens: 50mm Fixed Focal Length
 Camera height: 1.5 m

Photography Date: 14/04/2021
 Photography Time: 08:37:00

Wind Farm Developments key
 (by status):

Proposed scheme Application
 Operational Scoping
 Under construction Appeal/PLI
 Consented

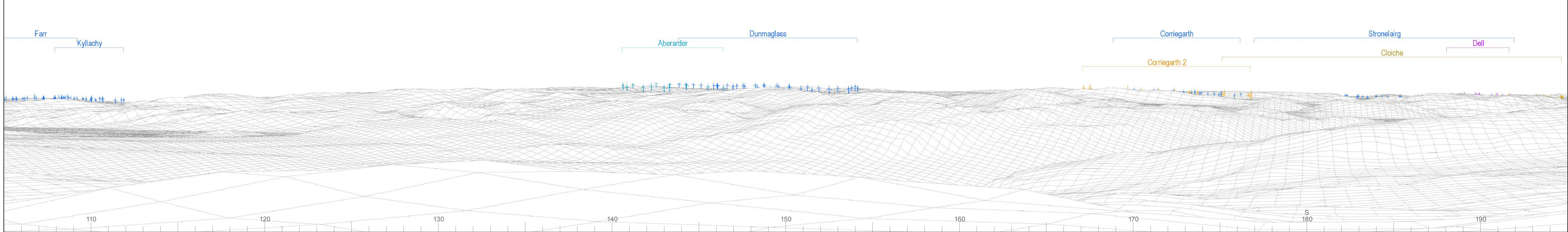
© Crown copyright and database rights 2023 Ordnance Survey data. Licence number: 0100031673



Baseline photograph

This image provides landscape and visual context only

Wireline drawing



OS reference: 254693E 834470N
 AOD: 430.48 m
 Direction of view: 150°
 Nearest turbine: 18.88 km

Horizontal field of view: 90° (cylindrical projection)
 Principal distance: 522 mm
 Paper size: 841 x 297 mm (half A1)
 Correct printed image size: 820 x 260 mm

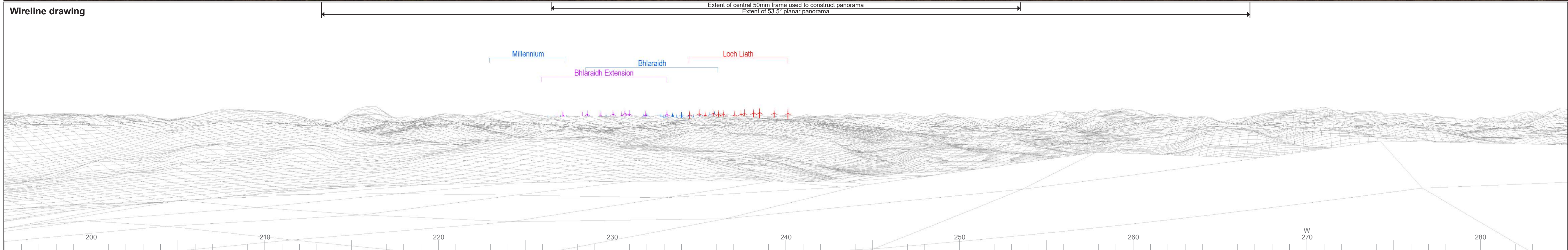
Camera: Nikon D750
 Lens: 50mm Fixed Focal Length
 Camera height: 1.5 m

Photography Date: 14/04/2021
 Photography Time: 08:37:00

Wind Farm Developments key
 (by status):

Proposed scheme Application
 Operational Scoping
 Under construction Appeal/PLI
 Consented

© Crown copyright and database rights 2023 Ordnance Survey data. Licence number: 0100031673



OS reference: 254693E 834470N
AOD: 430.48 m
Direction of view: 240°
Nearest turbine: 18.88 km

Horizontal field of view: 90° (cylindrical projection)
Principal distance: 522 mm
Paper size: 841 x 297 mm (half A1)
Correct printed image size: 820 x 260 mm

Camera: Nikon D750
Lens: 50mm Fixed Focal Length
Camera height: 1.5 m

Photography Date: 14/04/2021
Photography Time: 08:37:00

Wind Farm Developments key
(by status):

Proposed scheme Application
Operational Scoping
Under construction Appeal/PLI
Consented

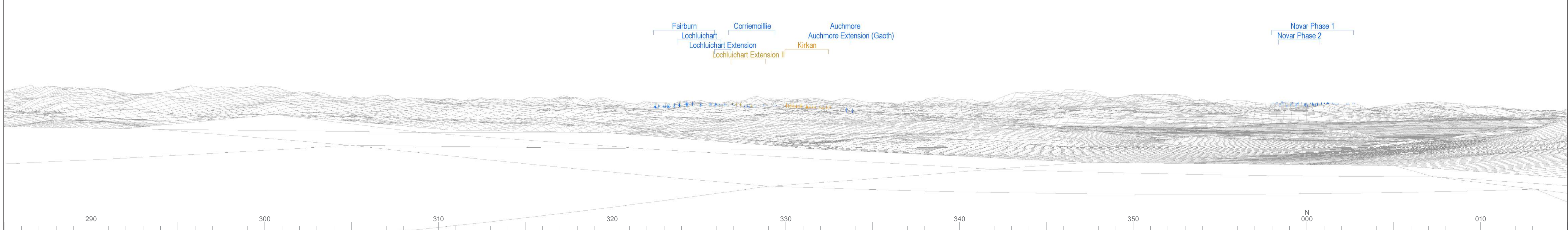
© Crown copyright and database rights 2023 Ordnance Survey data. Licence number: 0100031673



Baseline photograph

This image provides landscape and visual context only

Wireline drawing



OS reference: 254693E 834470N
 AOD: 430.48 m
 Direction of view: 330°
 Nearest turbine: 18.88 km

Horizontal field of view: 90° (cylindrical projection)
 Principal distance: 522 mm
 Paper size: 841 x 297 mm (half A1)
 Correct printed image size: 820 x 260 mm

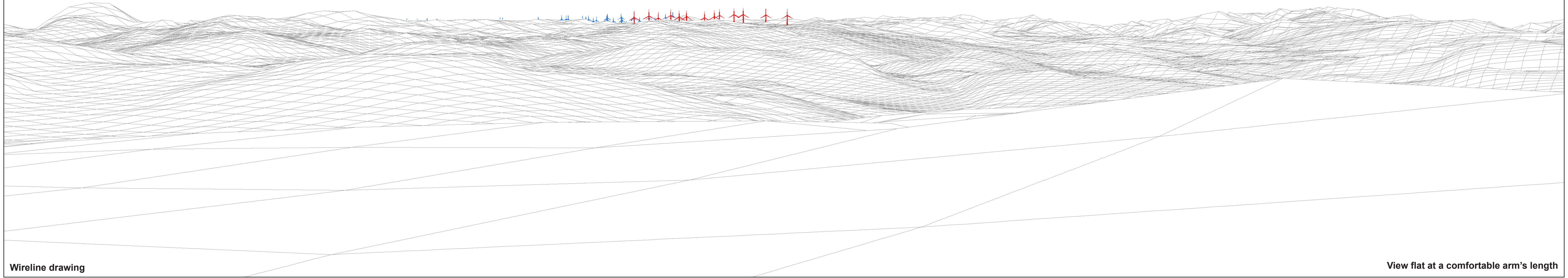
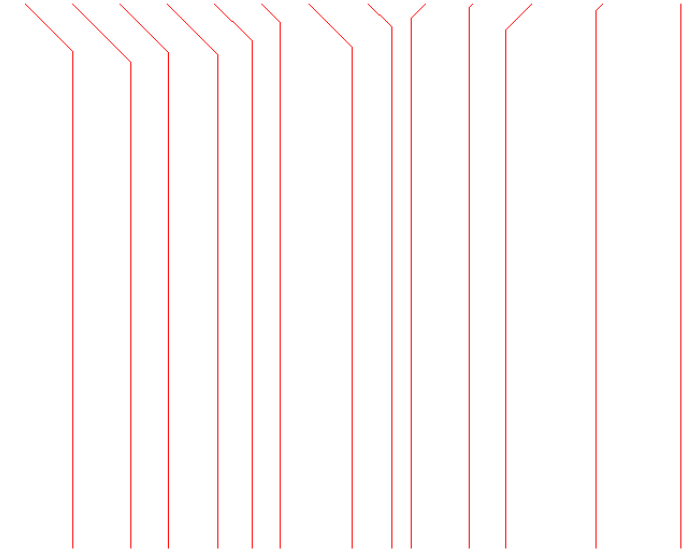
Camera: Nikon D750
 Lens: 50mm Fixed Focal Length
 Camera height: 1.5 m

Photography Date: 14/04/2021
 Photography Time: 08:37:00

Wind Farm Developments key (by status):

Proposed scheme Application
 Operational Scoping
 Under construction Appeal/PLI
 Consented

3 4 1 2 5 6 8 11 7 9 12 10 13



Wireline drawing

View flat at a comfortable arm's length

OS reference: 254693E 834470N
AOD: 430.48 m
Direction of view: 240°
Nearest turbine: 18.88 km
Horizontal field of view: 53.5° (planar projection)
Principal distance: 812.5 mm
Paper size: 841 x 297 mm (half A1)
Correct printed image size: 820 x 260 mm

Wind Farm Developments key
(by status):
Proposed scheme
Operational

Loch Liath Wind Farm
Figure: 6.24e
Viewpoint 11: Carn na Leitire

© Crown copyright and database rights 2023 Ordnance Survey data. Licence number: 0100031673





Photomontage

View flat at a comfortable arm's length



OS reference: 254693E 834470N
AOD: 430.48 m
Direction of view: 240°
Nearest turbine: 18.88 km

Horizontal field of view: 53.5° (planar projection)
Principal distance: 812.5 mm
Paper size: 841 x 297 mm (half A1)
Correct printed image size: 820 x 260 mm

Camera: Nikon D750
Lens: 50mm Fixed Focal Length
Camera height: 1.5 m

Photography Date: 14/04/2021
Photography Time: 08:37:00

Loch Liath Wind Farm
Figure: 6.24f
Viewpoint 11: Carn na Leitire