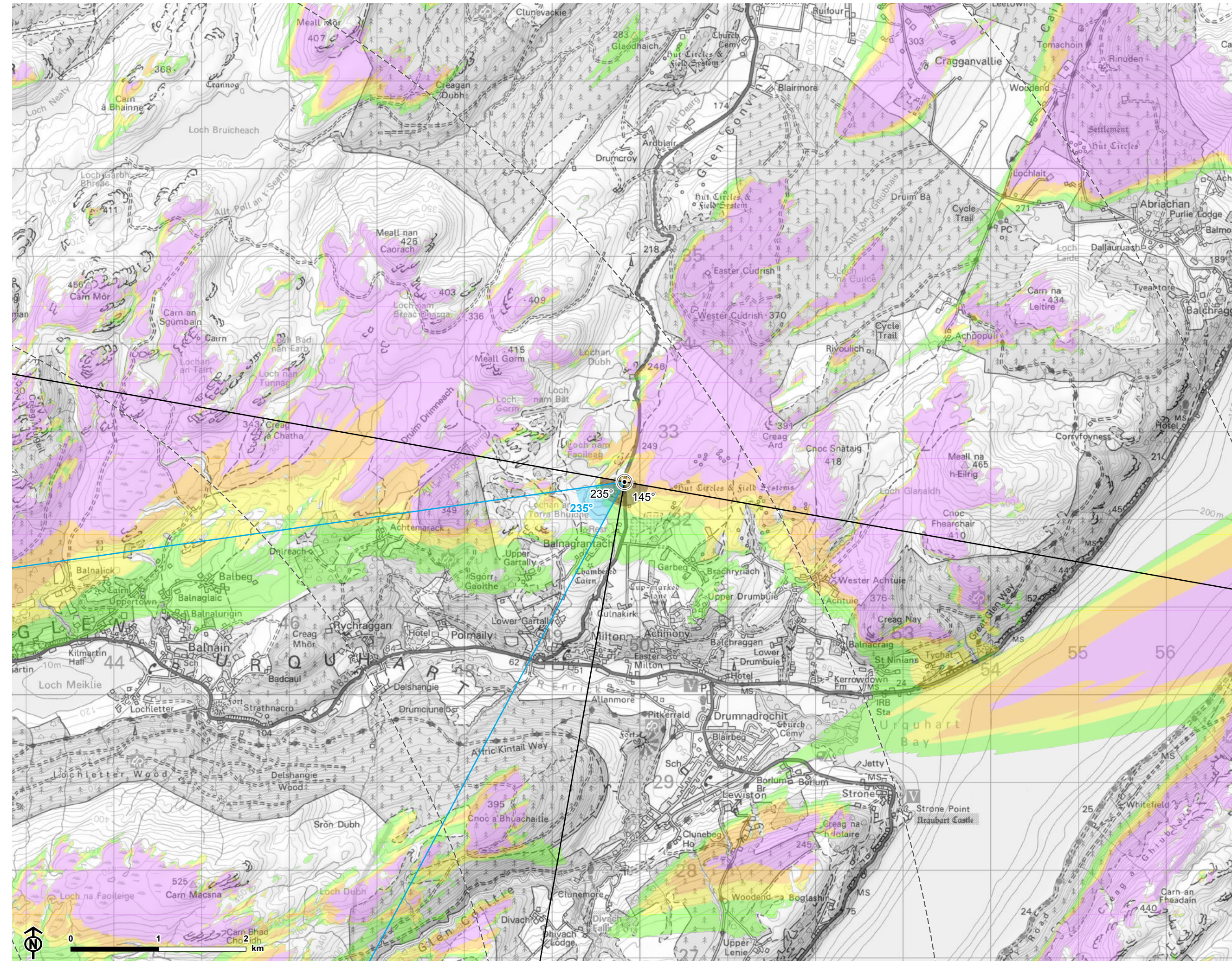


Contains Ordnance Survey data © Crown copyright and database right



© Crown copyright and database rights Ordnance Survey 0100031673

Loch Liath Wind Farm  
for Loch Liath Wind Farm Ltd



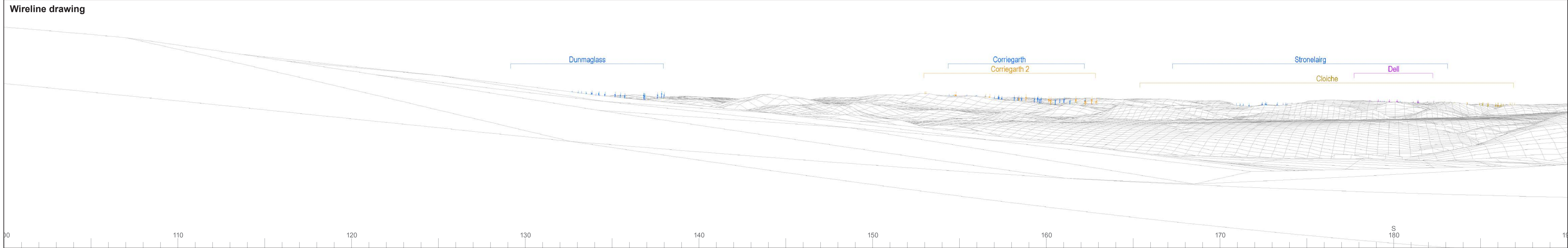
Figure: 6.20  
VP7: A833 near Balnagrantach

- Site boundary
- Turbine
- 5km intervals from outermost turbines
- LVIA study area 45km from outermost turbines
- Theoretical turbine visibility**
- 1-4 turbines visible
- 5-7 turbines visible
- 8-10 turbines visible
- 11-13 turbines visible
- Wind farm (by status)**
- Operational
- Under construction
- Consented
- Appeal/public inquiry
- Application submitted
- 53.5° field of view
- 90° field of view

**Notes:**  
The ZTV is calculated to turbine tip height (180-200m) from a viewing height of 2m above ground level. The terrain model assumes bare ground and is derived from OS Terrain 5 height data (obtained from Emapsite in November 2022). Earth curvature and atmospheric refraction have been taken into account. The ZTV was calculated using ArcMap 10.8.1 software.



CB: EB-wingfield\_h\_LUC 11057 Loch Liath LVIA 18/04/2023  
Source: Statkraft, LUC



OS reference: 249825E 832423N  
 AOD: 261.36 m  
 Direction of view: 145°  
 Nearest turbine: 13.66 km

Horizontal field of view: 90° (cylindrical projection)  
 Principal distance: 522 mm  
 Paper size: 841 x 297 mm (half A1)  
 Correct printed image size: 820 x 260 mm

Camera: Nikon D750  
 Lens: 50mm Fixed Focal Length  
 Camera height: 1.5 m

Photography Date: 14/04/2021  
 Photography Time: 10:04:00

Wind Farm Developments key  
 (by status):

Proposed scheme Application  
 Operational Scoping  
 Under construction Appeal/PLI  
 Consented

Loch Liath Wind Farm

Figure: 6.20a

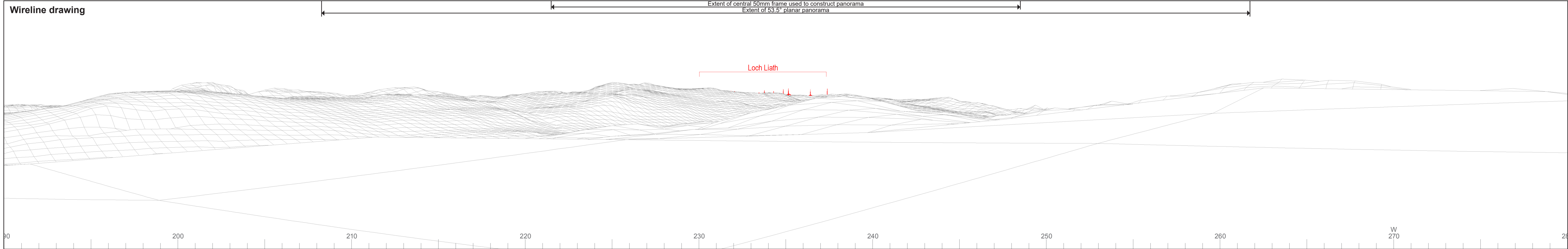
Viewpoint 7: A833 near Balnagrantach

© Crown copyright and database rights 2023 Ordnance Survey data. Licence number: 0100031673



Baseline photograph

This image provides landscape and visual context only



Wireline drawing

Extent of central 50mm frame used to construct panorama  
Extent of 53.5° planar panorama

Loch Liath



OS reference: 249825E 832423N  
AOD: 261.36 m  
Direction of view: 235°  
Nearest turbine: 13.66 km

Horizontal field of view: 90° (cylindrical projection)  
Principal distance: 522 mm  
Paper size: 841 x 297 mm (half A1)  
Correct printed image size: 820 x 260 mm

Camera: Nikon D750  
Lens: 50mm Fixed Focal Length  
Camera height: 1.5 m

Photography Date: 14/04/2021  
Photography Time: 10:04:00

Wind Farm Developments key  
(by status):

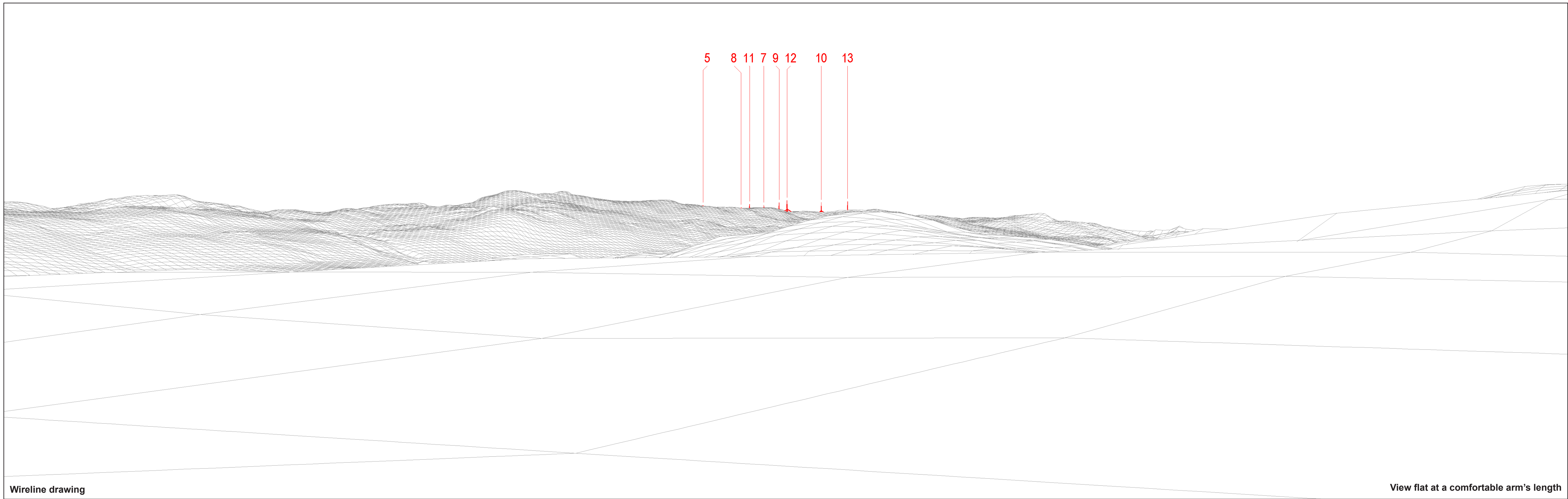
Proposed scheme Application  
Operational Scoping  
Under construction Appeal/PLI  
Consented

Loch Liath Wind Farm

Figure: 6.20b

Viewpoint 7: A833 near Balnagrantach

© Crown copyright and database rights 2023 Ordnance Survey data. Licence number: 0100031673



Wireline drawing

View flat at a comfortable arm's length

© Crown copyright and database rights 2023 Ordnance Survey data. Licence number: 0100031673



OS reference: 249825E 832423N  
 AOD: 261.36 m  
 Direction of view: 235°  
 Nearest turbine: 13.66 km

Horizontal field of view: 53.5° (planar projection)  
 Principal distance: 812.5 mm  
 Paper size: 841 x 297 mm (half A1)  
 Correct printed image size: 820 x 260 mm

Wind Farm Developments key  
 (by status):

Proposed scheme  
 Operational

Loch Liath Wind Farm  
**Figure: 6.20c**  
 Viewpoint 7: A833 near Balnagrantach



Photomontage

View flat at a comfortable arm's length



OS reference: 249825E 832423N  
AOD: 261.36 m  
Direction of view: 235°  
Nearest turbine: 13.66 km

Horizontal field of view: 53.5° (planar projection)  
Principal distance: 812.5 mm  
Paper size: 841 x 297 mm (half A1)  
Correct printed image size: 820 x 260 mm

Camera: Nikon D750  
Lens: 50mm Fixed Focal Length  
Camera height: 1.5 m

Photography Date: 14/04/2021  
Photography Time: 10:04:00

Loch Liath Wind Farm  
Figure: 6.20d  
Viewpoint 7: A833 near Balnagrantach