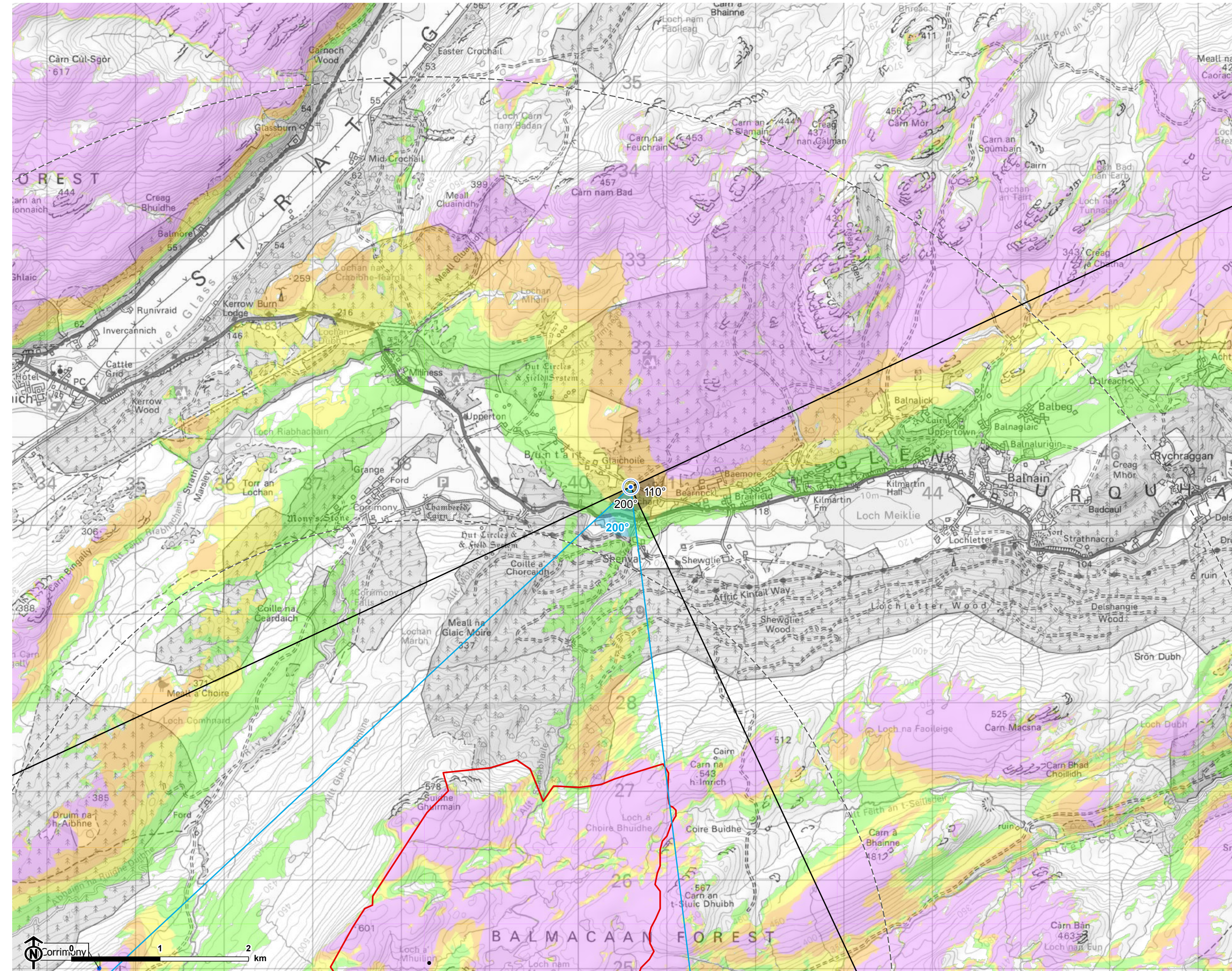


Contains Ordnance Survey data © Crown copyright and database right



© Crown copyright and database rights Ordnance Survey 0100031673

Loch Liath Wind Farm
for Loch Liath Wind Farm Ltd



Figure: 6.14
VP1: Afric Kintail Way near Braefield

- Site boundary
- Turbine
- 5km intervals from outermost turbines
- LVIA study area 45km from outermost turbines
- Theoretical turbine visibility**
- 1-4 turbines visible
- 5-7 turbines visible
- 8-10 turbines visible
- 11-13 turbines visible
- Wind farm (by status)**
- Operational
- Under construction
- Consented
- Appeal/public inquiry
- Application submitted
- Design/scoping
- 53.5° field of view
- 90° field of view

Notes:
The ZTV is calculated to turbine tip height (180-200m) from a viewing height of 2m above ground level. The terrain model assumes bare ground and is derived from OS Terrain 5 height data (obtained from Emapsite in November 2022). Earth curvature and atmospheric refraction have been taken into account. The ZTV was calculated using ArcMap 10.8.1 software.



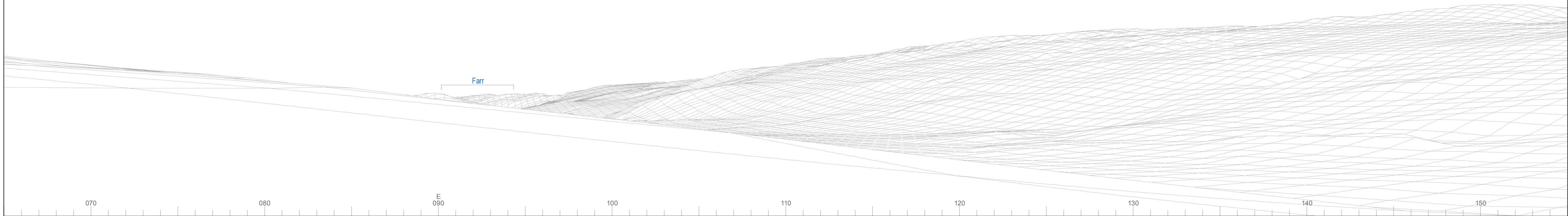
CB: EB:wingfield_h_LUC 11057 Loch Liath LVIA 21/03/2023
Source: Statkraft, LUC



Baseline photograph

This image provides landscape and visual context only

Wireline drawing



OS reference: 240594E 830432N
 AOD: 170.02 m
 Direction of view: 110°
 Nearest turbine: 5.83 km

Horizontal field of view: 90° (cylindrical projection)
 Principal distance: 522 mm
 Paper size: 841 x 297 mm (half A1)
 Correct printed image size: 820 x 260 mm

Camera: Nikon D750
 Lens: 50mm Fixed Focal Length
 Camera height: 1.5 m

Photography Date: 14/04/2021
 Photography Time: 17:17:00

Wind Farm Developments key (by status):

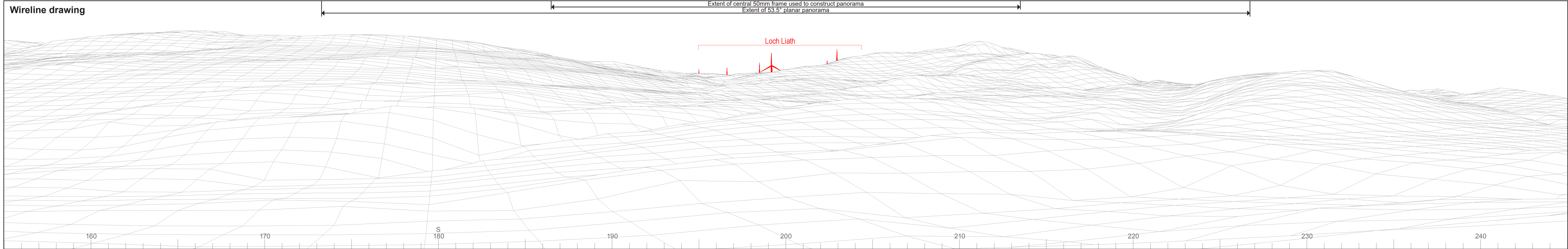
- Proposed scheme Application
- Operational Scoping
- Under construction Appeal/PLI
- Consented

© Crown copyright and database rights 2023 Ordnance Survey data. Licence number: 0100031673



Baseline photograph

This image provides landscape and visual context only



Wireline drawing

Extent of central 50mm frame used to construct panorama
Extent of 53.5° planar panorama

Loch Liath

160 170 180 190 200 210 220 230 240



OS reference: 240594E 830432N
AOD: 170.02 m
Direction of view: 200°
Nearest turbine: 5.83 km

Horizontal field of view: 90° (cylindrical projection)
Principal distance: 522 mm
Paper size: 841 x 297 mm (half A1)
Correct printed image size: 820 x 260 mm

Camera: Nikon D750
Lens: 50mm Fixed Focal Length
Camera height: 1.5 m

Photography Date: 14/04/2021
Photography Time: 17:17:00

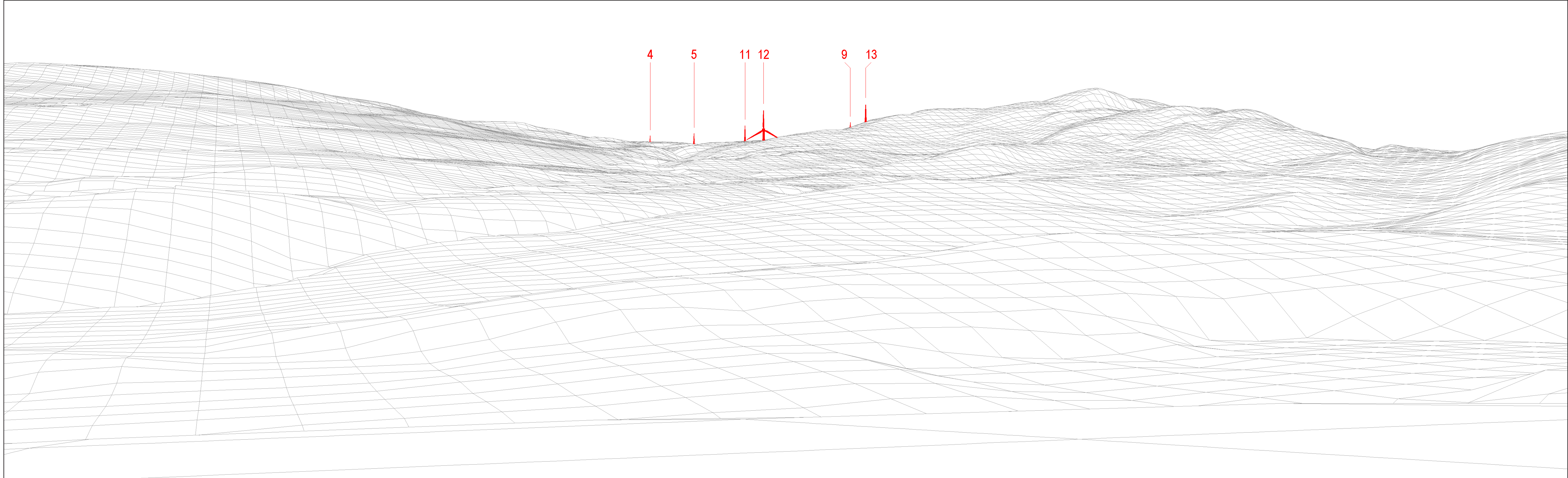
Wind Farm Developments key
(by status):

Proposed scheme Application
Operational Scoping
Under construction Appeal/PLI
Consented

Loch Liath Wind Farm
Figure: 6.14b

Viewpoint 1: Affric Kintail Way near Braefield

© Crown copyright and database rights 2023 Ordnance Survey data. Licence number: 0100031673



Wireline drawing

View flat at a comfortable arm's length



OS reference:	240594E 830432N	Horizontal field of view:	53.5° (planar projection)
AOD:	170.02 m	Principal distance:	812.5 mm
Direction of view:	200°	Paper size:	841 x 297 mm (half A1)
Nearest turbine:	5.83 km	Correct printed image size:	820 x 260 mm

Wind Farm Developments key
(by status):

Proposed scheme
Operational

Loch Liath Wind Farm
Figure: 6.14c
Viewpoint 1: Affric Kintail Way near Braefield

© Crown copyright and database rights 2023 Ordnance Survey data. Licence number: 0100031673



Photomontage

View flat at a comfortable arm's length



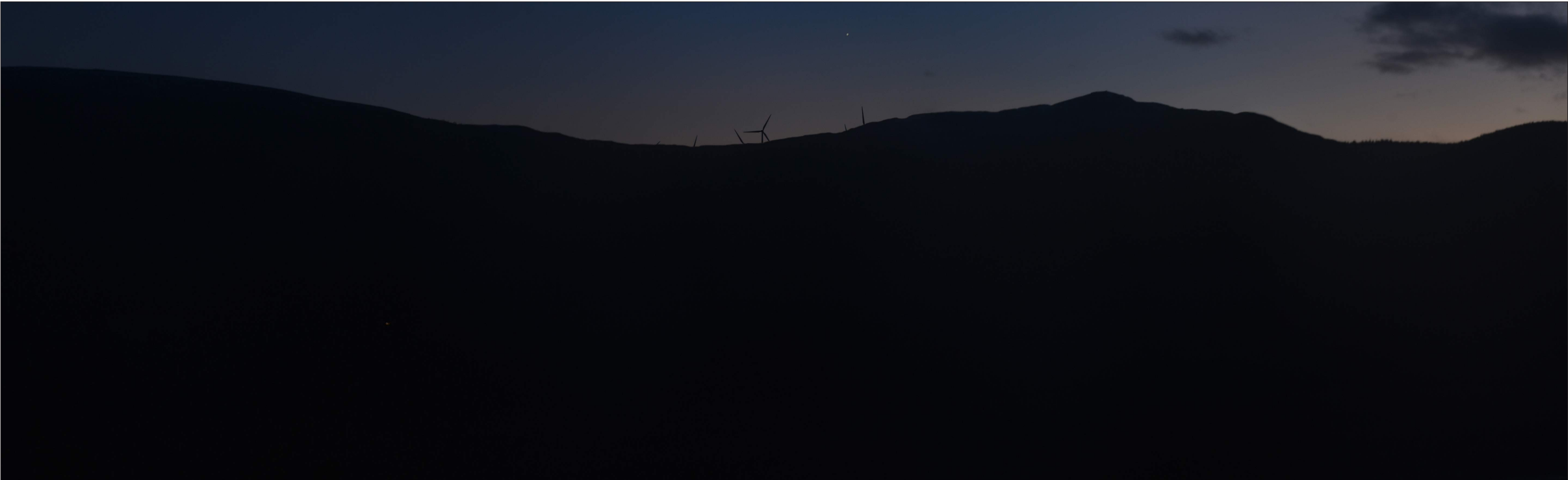
OS reference: 240594E 830432N
AOD: 170.02 m
Direction of view: 200°
Nearest turbine: 5.83 km

Horizontal field of view: 53.5° (planar projection)
Principal distance: 812.5 mm
Paper size: 841 x 297 mm (half A1)
Correct printed image size: 820 x 260 mm

Camera: Nikon D750
Lens: 50mm Fixed Focal Length
Camera height: 1.5 m

Photography Date: 14/04/2021
Photography Time: 17:17:00

Loch Liath Wind Farm
Figure: 6.14d
Viewpoint 1: Affric Kintail Way near Braefield



Dusk Photomontage – Maximum intensity aviation hub lighting shown on Turbines T1, T4, T7, T10, T12, T13

View flat at a comfortable arm's length



OS reference: 240594E 830432N
AOD: 170.02 m
Direction of view: 200°
Nearest turbine: 5.83 km

Horizontal field of view: 53.5° (planar projection)
Principal distance: 812.5 mm
Paper size: 841 x 297 mm (half A1)
Correct printed image size: 820 x 260 mm

Camera: Nikon D750
Lens: 50mm Fixed Focal Length
Camera height: 1.5 m

Photography Date: 10/12/2021
Photography Time: 17:14:00

Note: Nacelle lights shown in visualisation modelled to reflect individual candela values detailed in Appendix 6.5



Dusk Photomontage - Minimum intensity (10% of maximum candela) aviation hub lighting shown on Turbines T1, T4, T7, T10, T12, T13

View flat at a comfortable arm's length



OS reference: 240594E 830432N
AOD: 170.02 m
Direction of view: 200°
Nearest turbine: 5.83 km

Horizontal field of view: 53.5° (planar projection)
Principal distance: 812.5 mm
Paper size: 841 x 297 mm (half A1)
Correct printed image size: 820 x 260 mm

Camera: Nikon D750
Lens: 50mm Fixed Focal Length
Camera height: 1.5 m

Photography Date: 10/12/2021
Photography Time: 17:14:00

Note: Nacelle lights shown in visualisation modelled to reflect individual candela values detailed in Appendix 6.5



Dusk Photomontage – 2000 candela aviation hub lighting shown on Turbines T1, T4, T7, T10, T12, T13

View flat at a comfortable arm's length



OS reference: 240594E 830432N
AOD: 170.02 m
Direction of view: 200°
Nearest turbine: 5.83 km

Horizontal field of view: 53.5° (planar projection)
Principal distance: 812.5 mm
Paper size: 841 x 297 mm (half A1)
Correct printed image size: 820 x 260 mm

Camera: Nikon D750
Lens: 50mm Fixed Focal Length
Camera height: 1.5 m

Photography Date: 10/12/2021
Photography Time: 17:14:00

Note: Nacelle lights shown in visualisation modelled to 2000 candela value



Dusk Photomontage - 200 candela aviation hub lighting shown on Turbines T1, T4, T7, T10, T12, T13

View flat at a comfortable arm's length



OS reference: 240594E 830432N
AOD: 170.02 m
Direction of view: 200°
Nearest turbine: 5.83 km

Horizontal field of view: 53.5° (planar projection)
Principal distance: 812.5 mm
Paper size: 841 x 297 mm (half A1)
Correct printed image size: 820 x 260 mm

Camera: Nikon D750
Lens: 50mm Fixed Focal Length
Camera height: 1.5 m

Photography Date: 10/12/2021
Photography Time: 17:14:00

Note: Nacelle lights shown in visualisation modelled to 200 candela value