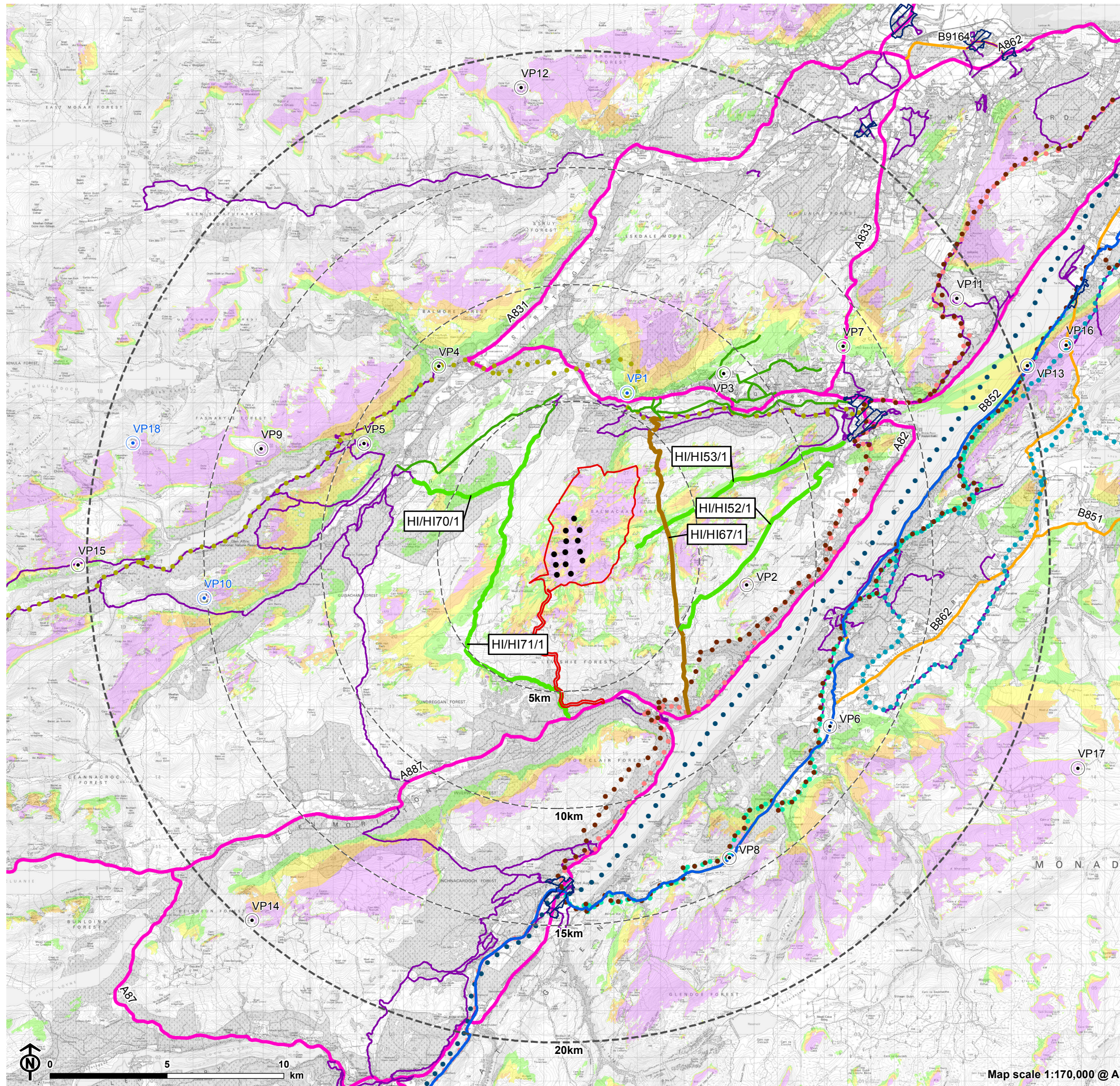


Figure 6.3b: Hub Height (102.5-122.5m) Zone of Theoretical Visibility (ZTV), Visual Receptors and Viewpoint Locations within 20km



- Site boundary
- Turbine
- 5km intervals from outermost turbines
- LVIA study area 20km from outermost turbines
- Recreational routes**
- The Caledonia Way (Sustrans)
- Loch Ness 360
- South Loch Ness Trail
- Affric Kintail Way (indicative realignment)
- Great Glen Canoe Trail
- Great Glen Way
- Trail of the Seven Lochs
- Core Paths
- Right of Way (Scotways)**
- Other route
- Recorded rights of way
- Right of way
- A Road
- B Road
- Settlement boundaries
- Theoretical turbine visibility**
- 1-4 turbines visible
- 5-7 turbines visible
- 8-10 turbines visible
- 11-13 turbines visible
- Viewpoint

- | | |
|--|--|
| VP1: Affric-Kintail Way, near Brae field | VP10: Creag Dhuhb |
| VP2: Meall Fuar-mhonaidh | VP11: Carn na Leitire |
| VP3: Balbeg | VP12: Beinn a' Bha'ach Ard |
| VP4: Affric Kintail Way, West of Cannich | VP13: B852 Erchite Wood, east of Loch Ness (picnic area) |
| VP5: Coire Loch Trail, Glen Affric | VP14: Meall Dubh |
| VP6: B862 near Whitebridge | VP15: Core Path at Loch Affric |
| VP7: A833 near Balnagrantach | VP16: B862 South of Dores |
| VP8: B862 Suidhe Viewpoint | VP17: Carn na Saobhaidhe |
| VP9: Meall Mor, above Glen Affric | VP18: Toll Creagach |

Notes:
Dusk viewpoints shown in blue

The ZTV is calculated to turbine hub height (102.5-122.5m) from a viewing height of 2m above ground level. The terrain model assumes bare ground and is derived from OS Terrain 5 height data (obtained from Emapsite in November 2022). Earth curvature and atmospheric refraction have been taken into account. The ZTV was calculated using ArcMap 10.8.1 software.