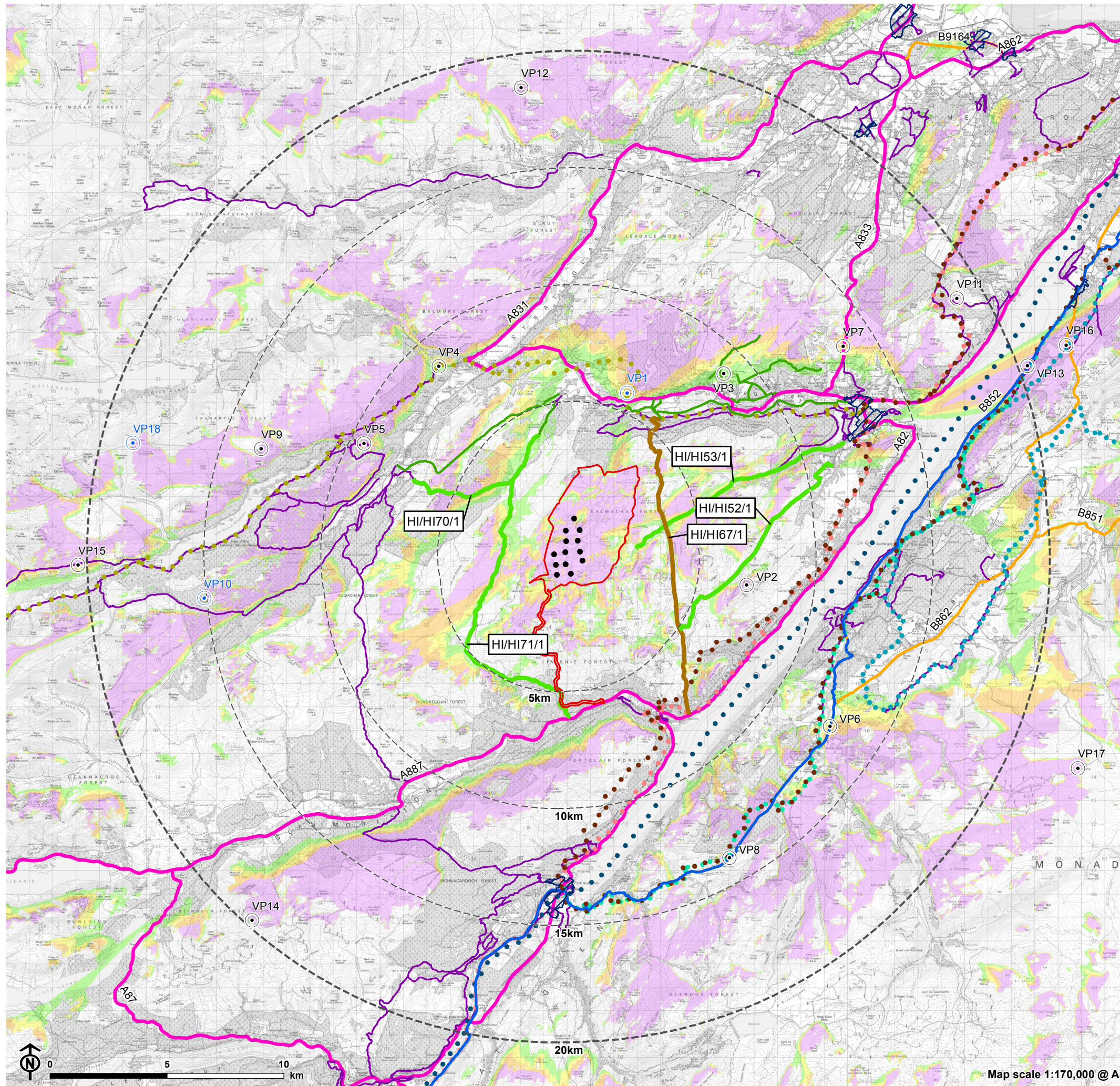


**Figure 6.2b: Blade Tip Height (180-200m) Zone of Theoretical Visibility (ZTV), Visual Receptors and Viewpoint Locations within 20km**



- Site boundary
- Turbine
- 5km intervals from outermost turbines
- LVIA study area 20km from outermost turbines
- Recreational routes**
- The Caledonia Way (Sustrans)
- Loch Ness 360
- South Loch Ness Trail
- Affric Kintail Way (indicative realignment)
- Great Glen Canoe Trail
- Great Glen Way
- Trail of the Seven Lochs
- Core Paths
- Right of Way (Scotways)**
- Other route
- Recorded rights of way
- Right of way
- A Road
- B Road
- Settlement boundaries
- Theoretical turbine visibility**
- 1-4 turbines visible
- 5-7 turbines visible
- 8-10 turbines visible
- 11-13 turbines visible
- Viewpoint

- VP1: Affric-Kintail Way, near Braefield
- VP2: Meall Fuar-mhonaidh
- VP3: Balbeg
- VP4: Affric Kintail Way, West of Cannich
- VP5: Coire Loch Trail, Glen Affric
- VP6: B862 near Whitebridge
- VP7: A833 near Balnagrantach
- VP8: B862 Suidhe Viewpoint
- VP9: Meall Mor, above Glen Affric
- VP10: Creag Dhubh
- VP11: Carn na Leitire
- VP12: Beinn a' Bha'ach Ard
- VP13: B852 Erchite Wood, east of Loch Ness (picnic area)
- VP14: Meall Dubh
- VP15: Core Path at Loch Affric
- VP16: B862 South of Dores
- VP17: Carn na Saobhaidhe
- VP18: Toll Creagach

**Notes:**  
Dusk viewpoints shown in blue

The ZTV is calculated to turbine tip height (180-200m) from a viewing height of 2m above ground level. The terrain model assumes bare ground and is derived from OS Terrain 5 height data (obtained from Emapsite in November 2022). Earth curvature and atmospheric refraction have been taken into account. The ZTV was calculated using ArcMap 10.8.1 software.