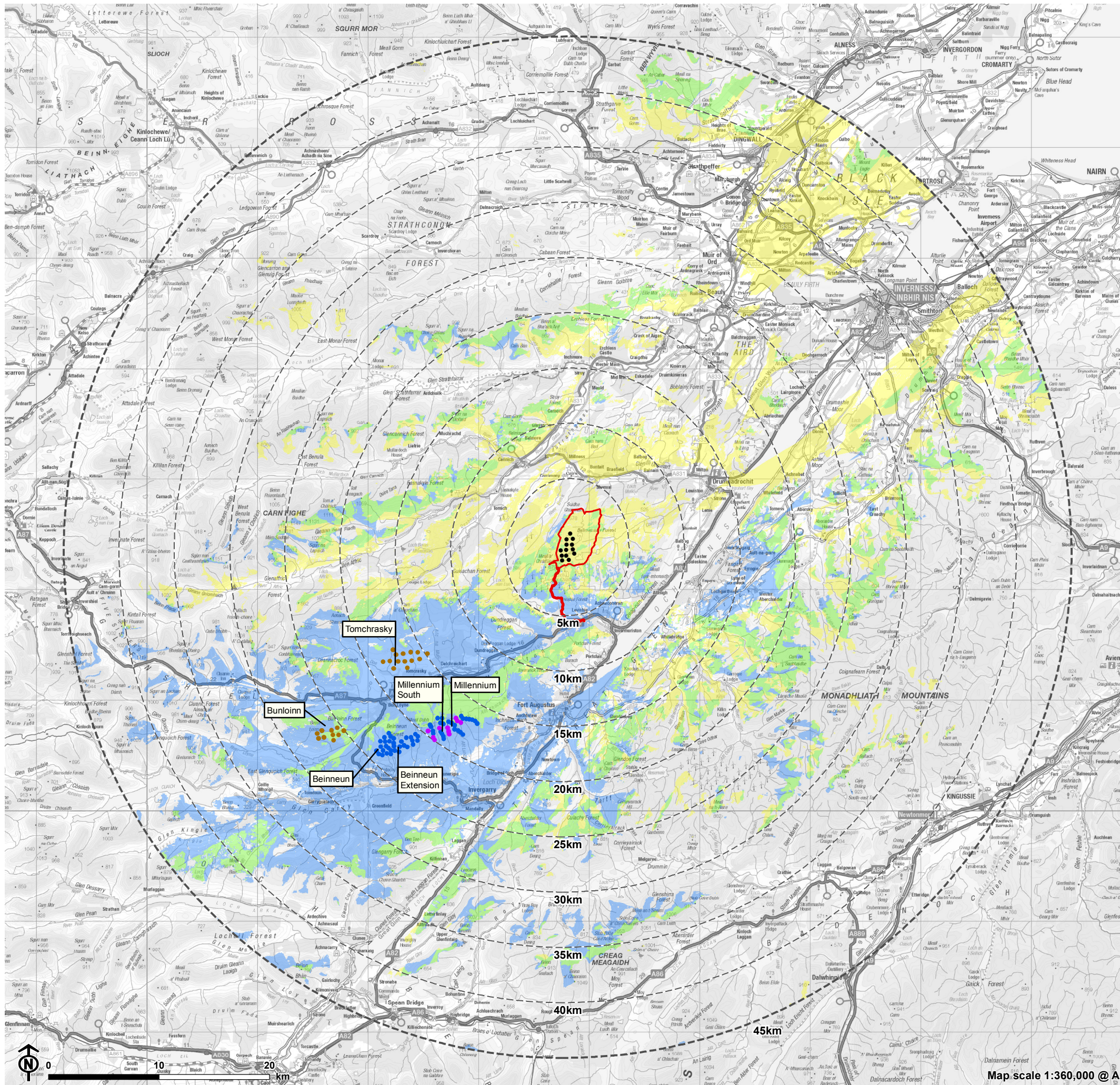


Figure 6.13: CZTV - Beinneun, Beinneun Extension, Millennium, Millennium South, Bunloinn, Tomchraskey and Loch Liath



- Site boundary
- Turbine
- 5km intervals from outermost turbines
- LVIA study area 45km from outermost turbines
- Theoretical windfarm visibility**
- Only other windfarms visible
- Only Loch Liath Windfarm visible
- Loch Liath and other windfarms visible
- Wind farm developments (by status)**
- Operational
- Consented
- Application submitted

Notes:
Each ZTV is calculated to turbine tip height from a viewing height of 2m above ground level. The terrain model assumes bare ground and is derived from OS Terrain 5 height data (obtained from Emapsite in November 2022). Earth curvature and atmospheric refraction have been taken into account. The ZTV was calculated using ArcMap 10.8.1 software.