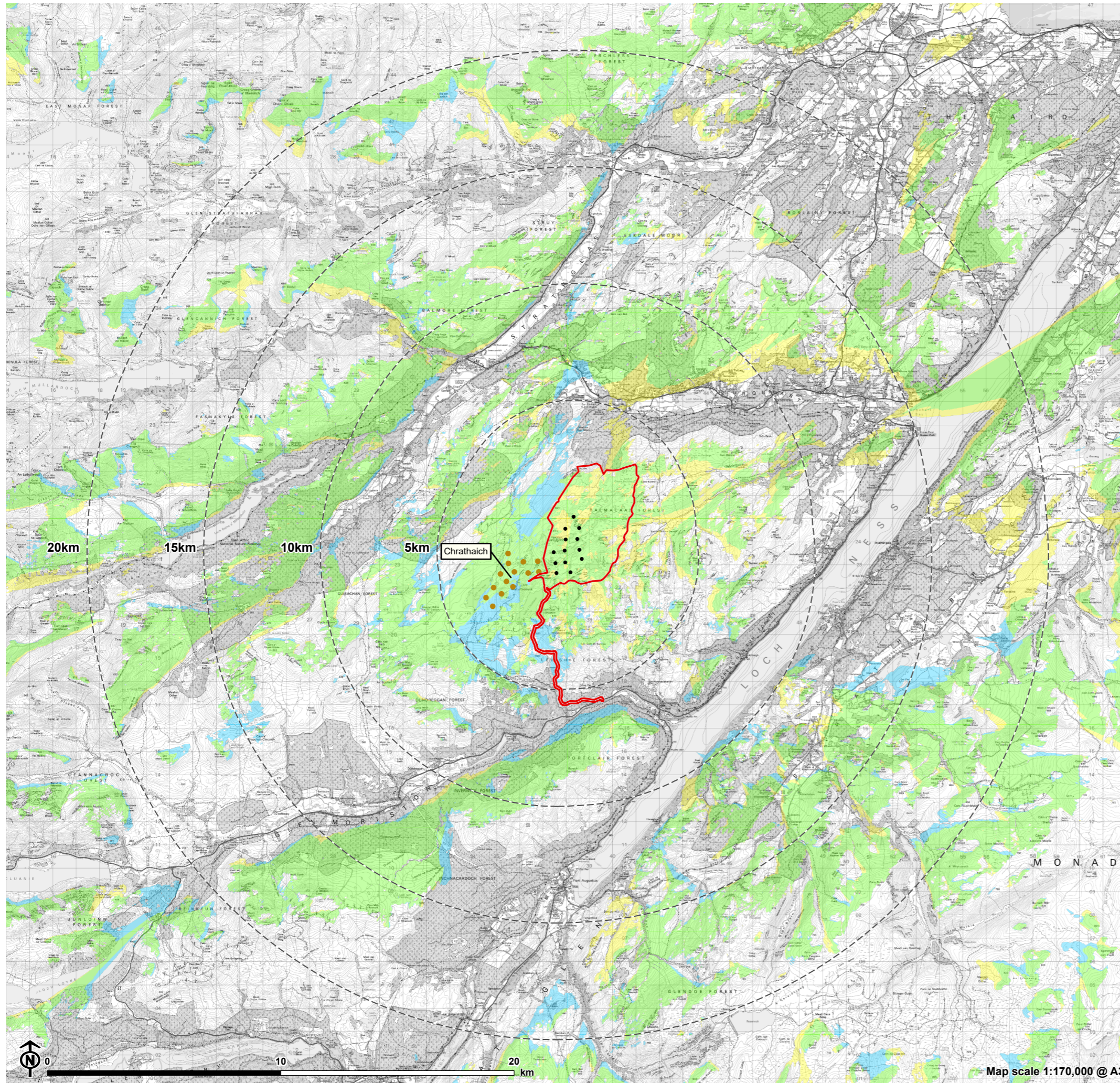


SEI Figure 6.38:
CZTV - Chrathaich and Loch Liath to 20km



- Site boundary
- Turbine
- 5km intervals from outermost turbines
- Theoretical wind farm visibility**
- Only Chrathaich Wind Farm visible
- Only Loch Liath Wind Farm visible
- Both Chrathaich and Loch Liath Wind Farms visible
- Wind Farm Status**
- Application Submitted

Notes:
Each ZTV is calculated to turbine tip height from a viewing height of 2m above ground level. The terrain model assumes bare ground and is derived from OS Terrain 5 height data (obtained from Emapsite in June 2023). Earth curvature and atmospheric refraction have been taken into account. The ZTV was calculated using ArcGIS Pro 3.2.1 software.