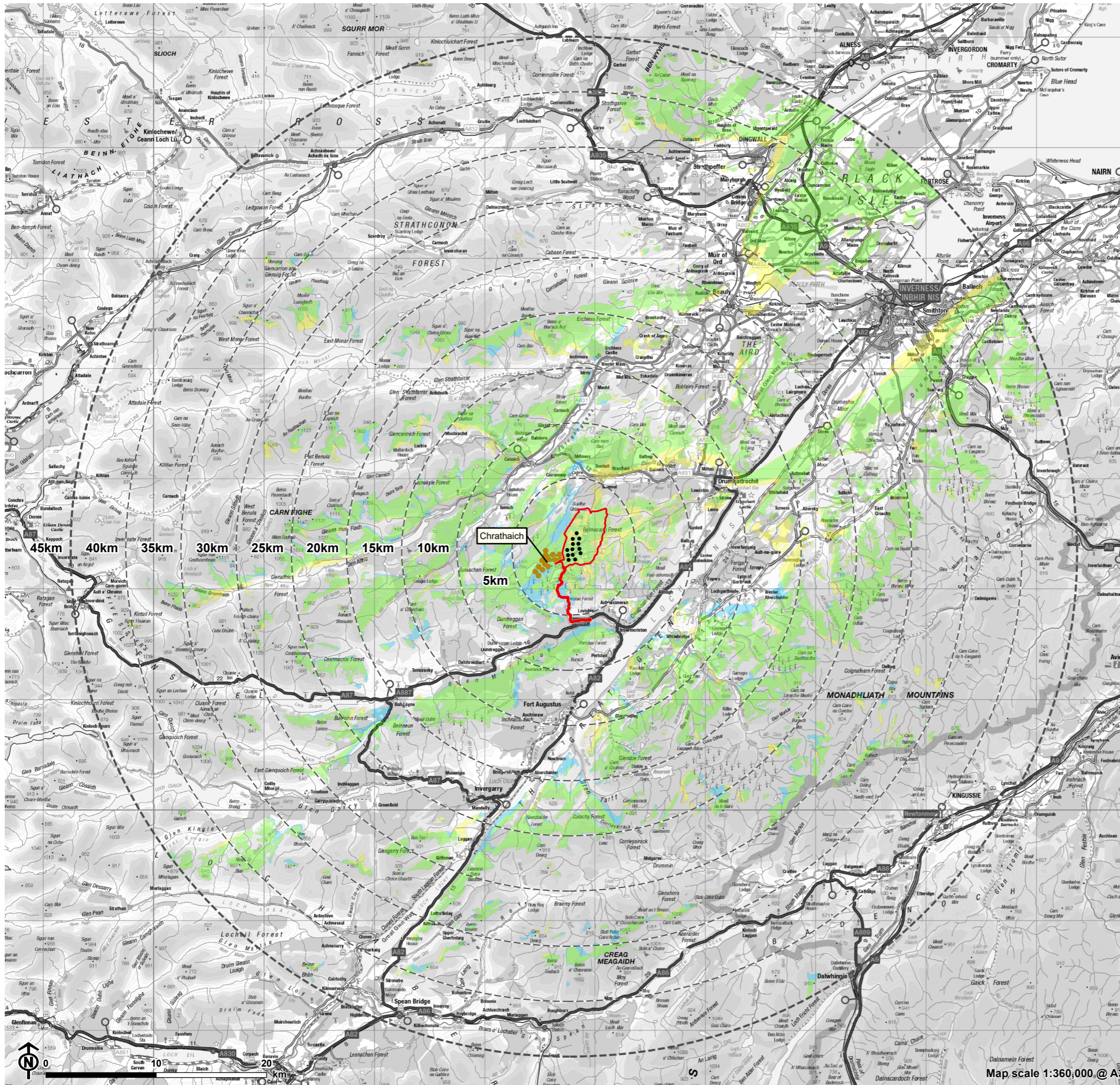


SEI Figure 6.37:
CZTV - Chrathach and Loch Liath



- Site boundary
- Turbine
- 5km intervals from outermost turbines
- LVIA study area 45km from outermost turbines
- Theoretical wind farm visibility**
- Only Chrathach Wind Farm visible
- Only Loch Liath Wind Farm visible
- Both Chrathach and Loch Liath Wind Farms visible
- Wind Farm Status**
- Application Submitted

Notes:
Each ZTV is calculated to turbine tip height from a viewing height of 2m above ground level. The terrain model assumes bare ground and is derived from OS Terrain 5 height data (obtained from Emapsite in June 2023). Earth curvature and atmospheric refraction have been taken into account. The ZTV was calculated using ArcGIS Pro 3.3.1 software.