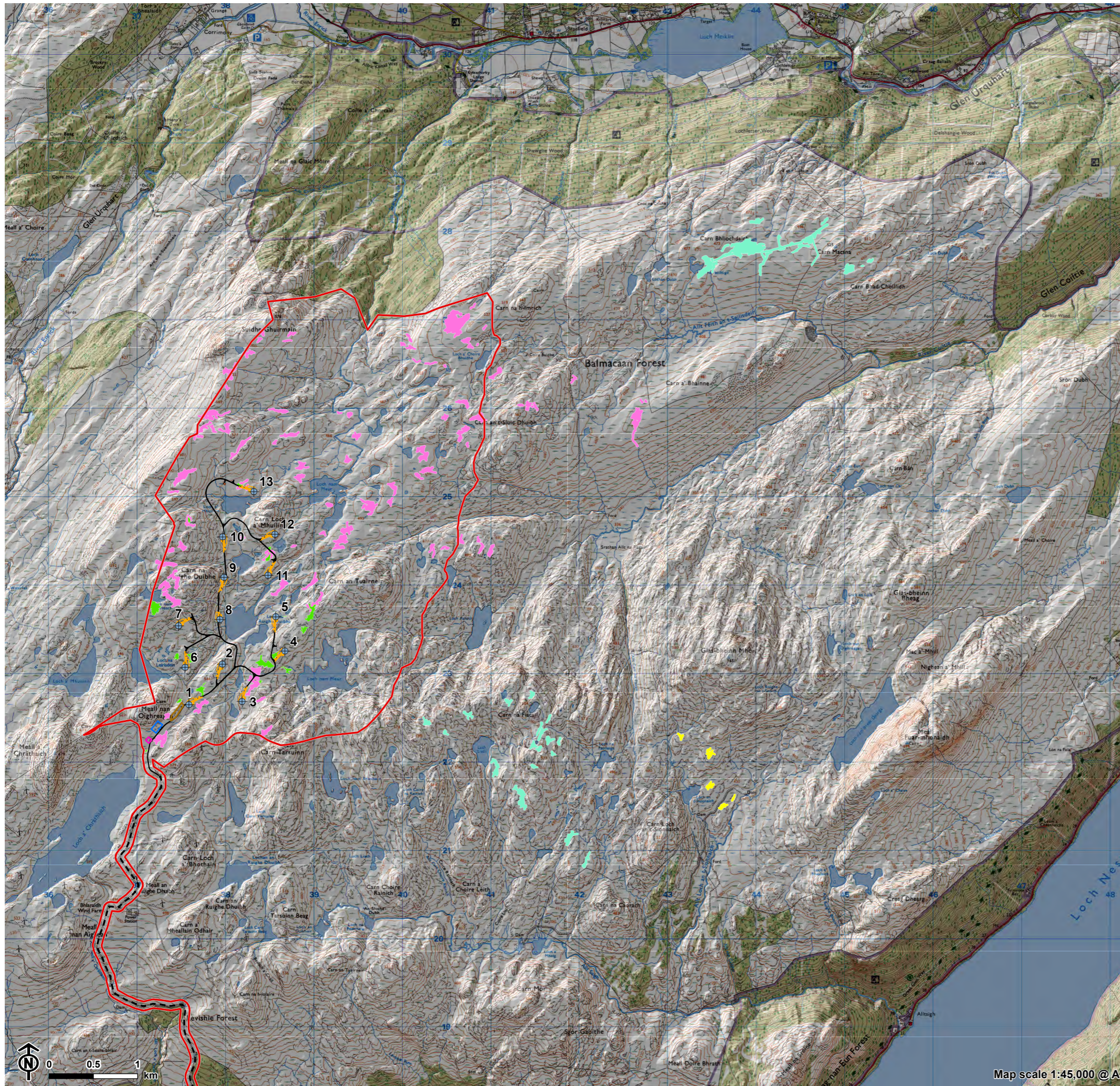


SEI Figure 1: Proposed restoration methods for the restoration areas identified in the updated OREP



- Site boundary
 - Turbine
 - Construction compound
 - Substation
 - Borrow pit
 - Temporary hardstanding
 - Permanent hardstanding
 - Met mast
 - New access track
 - Existing access track
- Technique**
- Repair of eroded / bare areas using hand techniques
 - Repair of eroded / bare areas using hand techniques and helicoptered materials
 - Repair of eroded / bare areas using machine-based techniques
 - Repair of eroded / bare areas using translocated peat, hand and machine-based techniques

