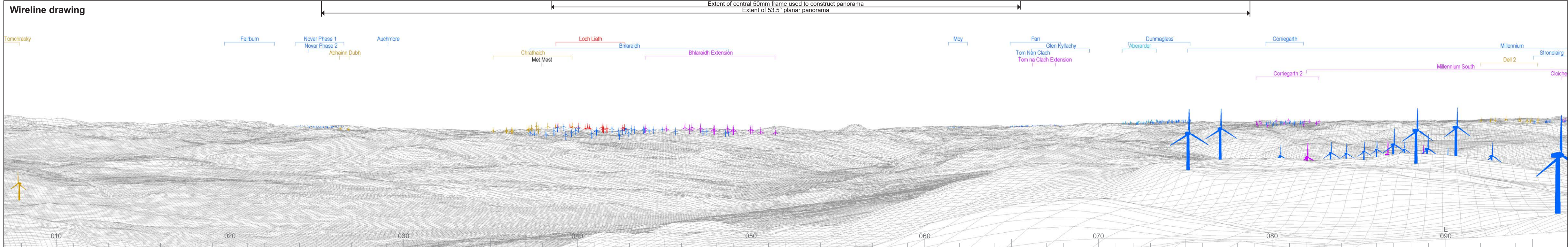




Baseline photograph

This image provides landscape and visual context only



OS reference: 224520E 807878N
AOD: 787 m
Direction of view: 52°
Nearest turbine: 19.71 km

Horizontal field of view: 90° (cylindrical projection)
Principal distance: 522 mm
Paper size: 841 x 297 mm (half A1)
Correct printed image size: 820 x 260 mm

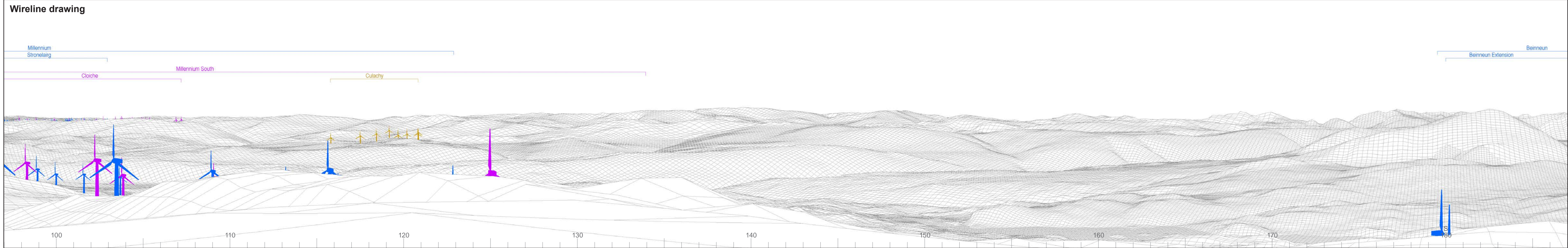
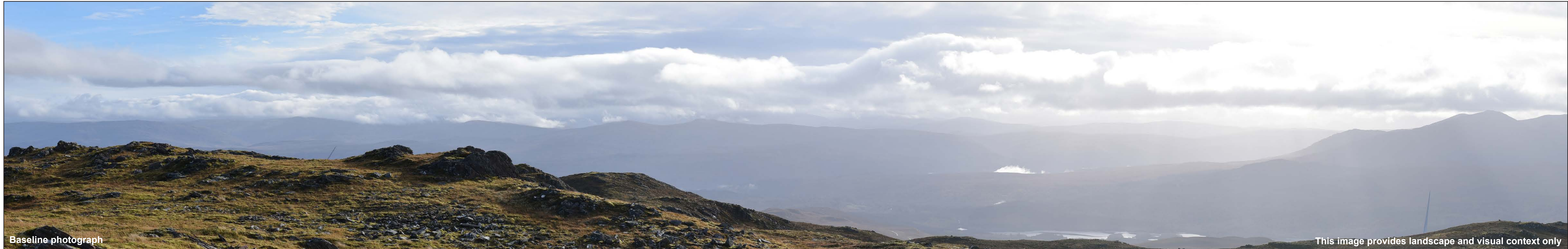
Camera: Nikon D750
Lens: 50mm Fixed Focal Length
Camera height: 1.5 m

Photography Date: 29/10/2022
Photography Time: 12:07

Wind Farm Developments key
(by status):

Proposed scheme Application
Operational Appeal/PLI
Under construction
Consented

© Crown copyright and database rights 2024 Ordnance Survey data. Licence number: 0100031673



OS reference: 224520E 807878N
 AOD: 787 m
 Direction of view: 142°
 Nearest turbine: 19.71 km

Horizontal field of view: 90° (cylindrical projection)
 Principal distance: 522 mm
 Paper size: 841 x 297 mm (half A1)
 Correct printed image size: 820 x 260 mm

Camera: Nikon D750
 Lens: 50mm Fixed Focal Length
 Camera height: 1.5 m

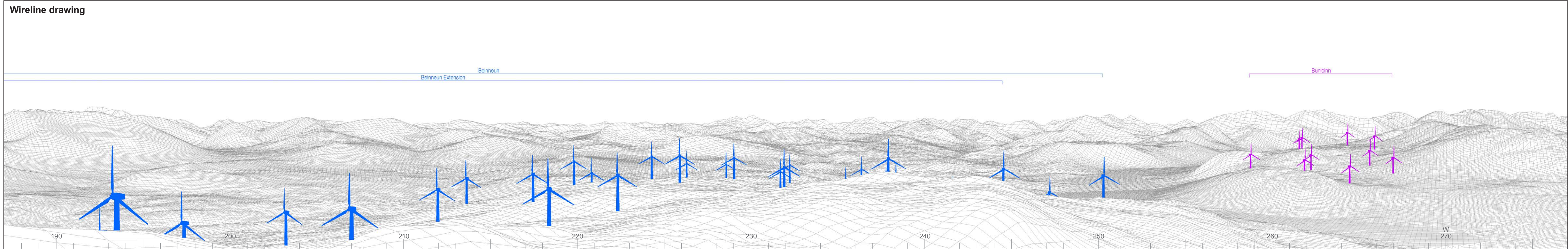
Photography Date: 29/10/2022
 Photography Time: 12:07

Wind Farm Developments key
 (by status):

Proposed scheme Application
 Operational Appeal/PLI
 Under construction
 Consented

Loch Liath Wind Farm
 SEI Figure: 6.27b
 Viewpoint 14: Meall Dubh

© Crown copyright and database rights 2024 Ordnance Survey data. Licence number: 0100031673



© Crown copyright and database rights 2024 Ordnance Survey data. Licence number: 0100031673



OS reference: 224520E 807878N
 AOD: 787 m
 Direction of view: 232°
 Nearest turbine: 19.71 km

Horizontal field of view: 90° (cylindrical projection)
 Principal distance: 522 mm
 Paper size: 841 x 297 mm (half A1)
 Correct printed image size: 820 x 260 mm

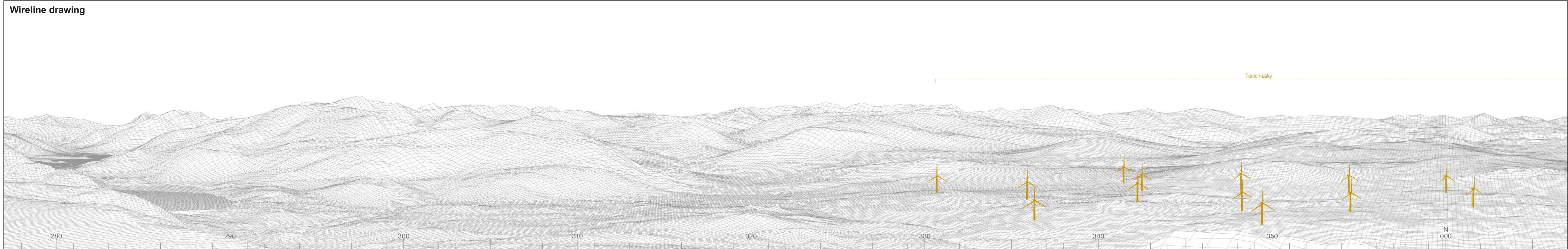
Camera: Nikon D750
 Lens: 50mm Fixed Focal Length
 Camera height: 1.5 m

Photography Date: 29/10/2022
 Photography Time: 12:07

Wind Farm Developments key
 (by status):

Proposed scheme Application
 Operational Appeal/PLI
 Under construction
 Consented

Loch Liath Wind Farm
 SEI Figure: 6.27c
 Viewpoint 14: Meall Dubh



OS reference: 224520E 807878N
 AOD: 787 m
 Direction of view: 322°
 Nearest turbine: 19.71 km

Horizontal field of view: 90° (cylindrical projection)
 Principal distance: 522 mm
 Paper size: 841 x 297 mm (half A1)
 Correct printed image size: 820 x 260 mm

Camera: Nikon D750
 Lens: 50mm Fixed Focal Length
 Camera height: 1.5 m

Photography Date: 29/10/2022
 Photography Time: 12:07

Wind Farm Developments key
 (by status):

Proposed scheme Application
 Operational Appeal/PLI
 Under construction
 Consented

Loch Liath Wind Farm
 SEI Figure: 6.27d
 Viewpoint 14: Meall Dubh

© Crown copyright and database rights 2024 Ordnance Survey data. Licence number: 0100031673