

# Welcome

Our team are here to discuss our plans, listen to your views and outline the next steps of the Proposed Development.



## About Statkraft

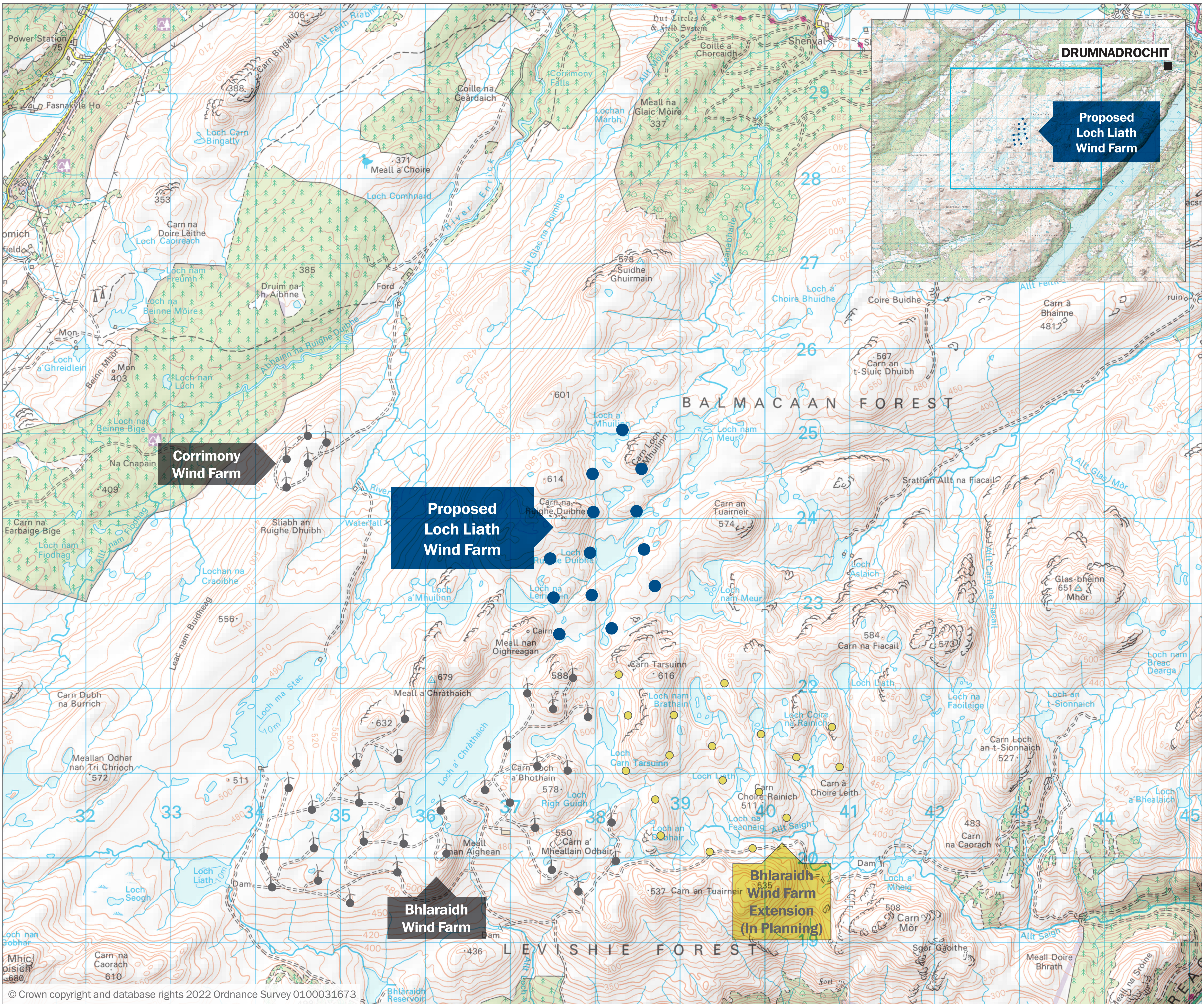
- The largest generator of renewable energy in Europe
- A state owned utility with origins in Norwegian hydropower over 125 years ago
- Operating in the UK since 2006
- Scottish Head Office in Glasgow
- Development pipeline includes wind, solar and grid stability services
- Distributed over £2 million to communities near operating wind farms





# About Loch Liath Wind Farm: The Story So Far

Our updated proposal is for **13 turbines**, reduced from the plan for 26 presented at our last exhibition. We expect to submit an application in late 2022.



	No. of Turbines	Max Blade Tip Heights	Installed Capacity (MW)	Estimated Generation	Community Fund (per year)
<b>Loch Liath</b>	<b>13</b>	<b>200m</b>	<b>85.8</b>	<b>78,000</b> homes powered per year <sup>1</sup>	<b>£429,000</b> per year <sup>2</sup>

<sup>1</sup> Based on a 6.6MW turbine, wind resource assessment and average Scottish domestic consumption of 3,520 kWh pa (BEIS 2021).

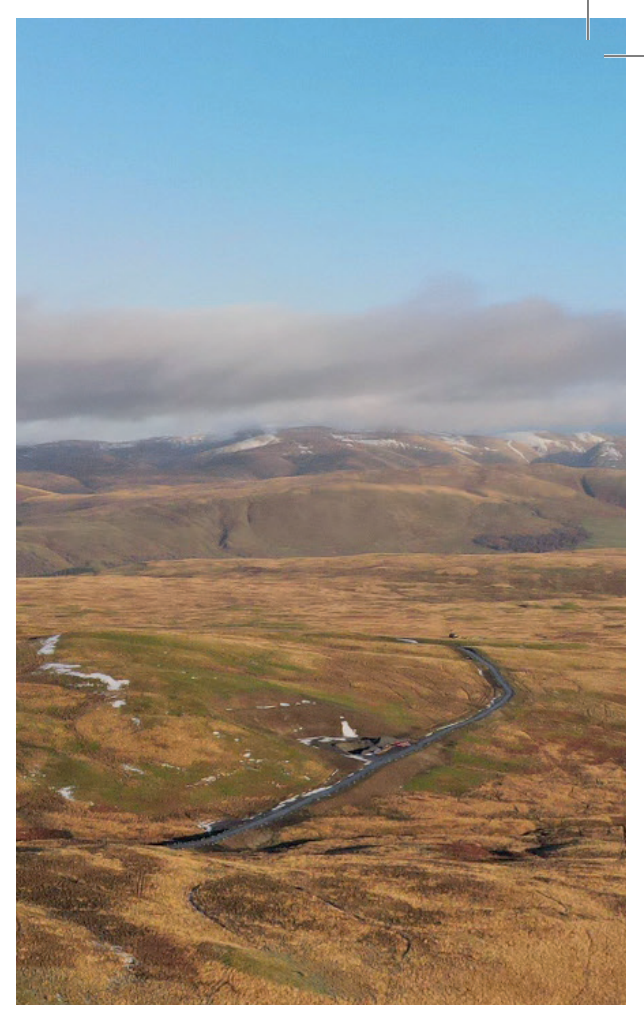
<sup>2</sup> Based on 13 6.6MW turbines and £5,000 per MW

Following detailed consultation and extensive surveys, we have reduced the number of turbines and relocated infrastructure to minimise environmental impacts.

We welcome your views on our updated plans.

Project website: [www.lochliath.co.uk](http://www.lochliath.co.uk)

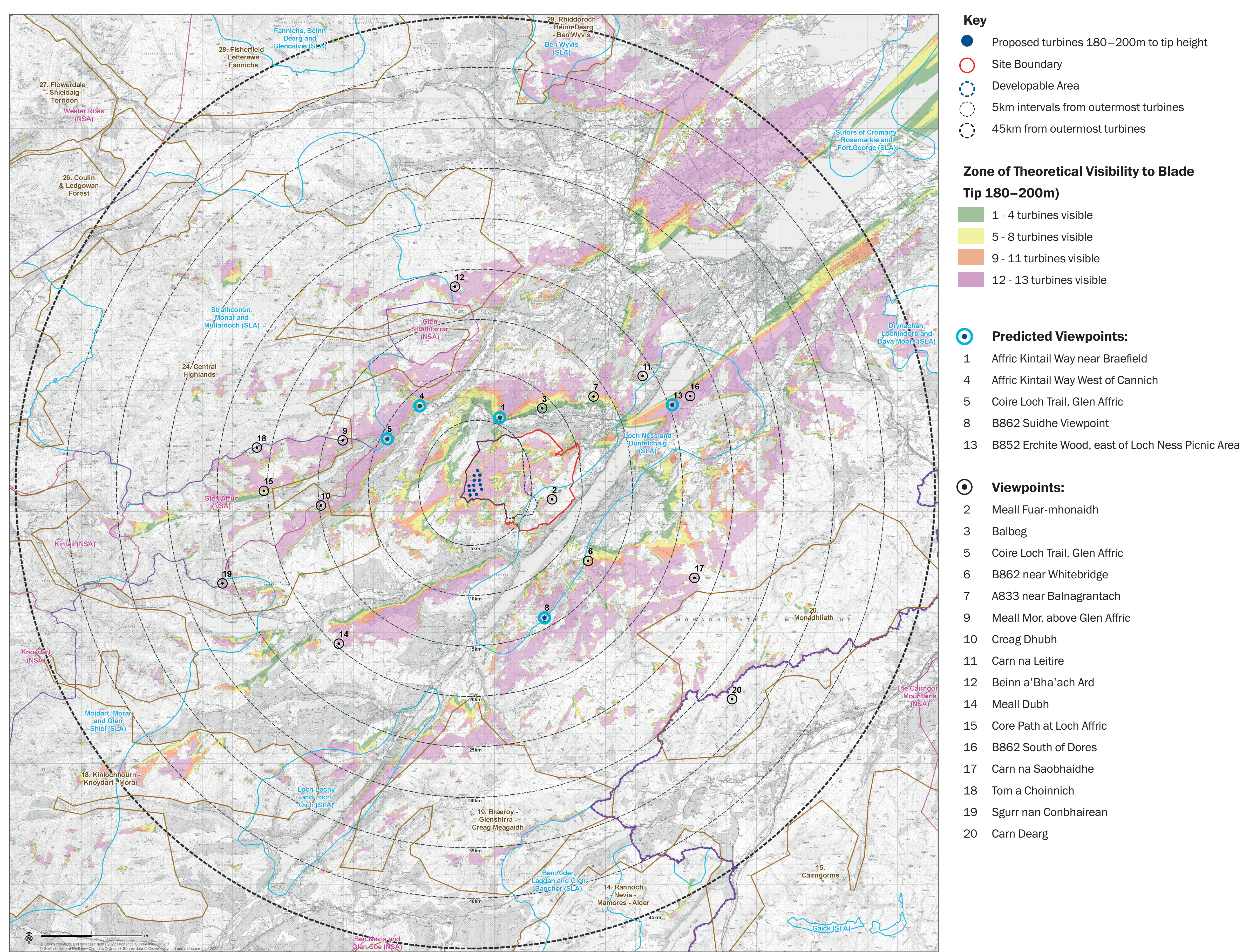




# What will Loch Liath Wind Farm look like?

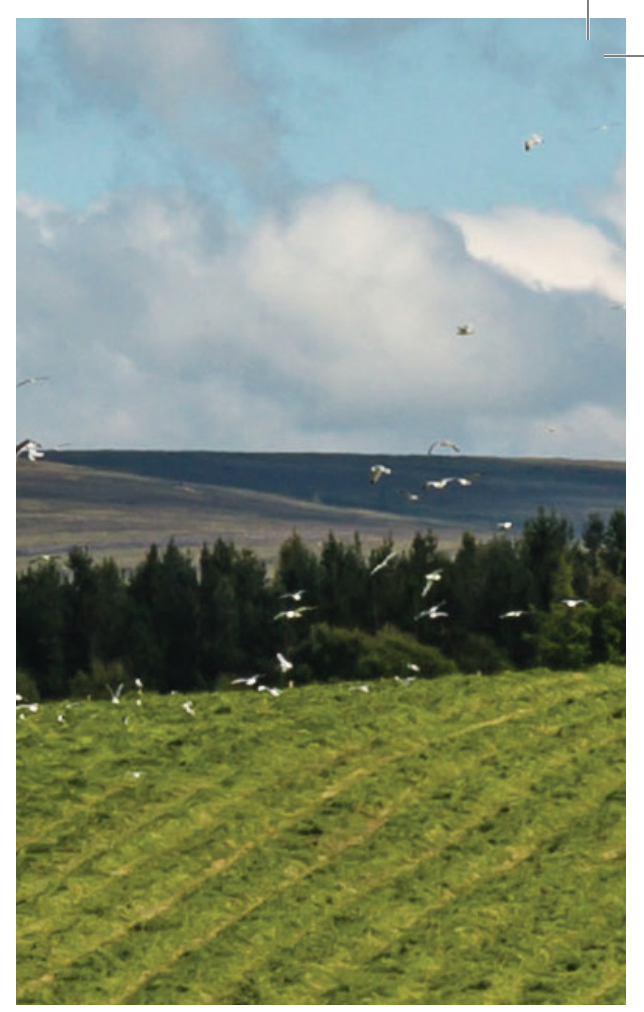
We understand you want to know how our proposal will look.

Today we can show you how the wind farm will look from specific locations using specialist computer software. Talk to a member of our team to find out more.



The map illustrates the theoretical visibility of the wind farm, based on what is referred to as a "bare earth" model. It does not account for screening effects provided by woodland, vegetation and buildings, which reduce the extent of visibility.





# Environmental Impact Assessment

**Environmental Impact Assessment (EIA) is the process of identifying, assessing and presenting the likely significant environmental effects of a development proposal to inform sound decision making.**

Having an understanding of the potential for significant effects as information emerges through the EIA process allows for early action to be taken to avoid these effects as part of the design of the project.

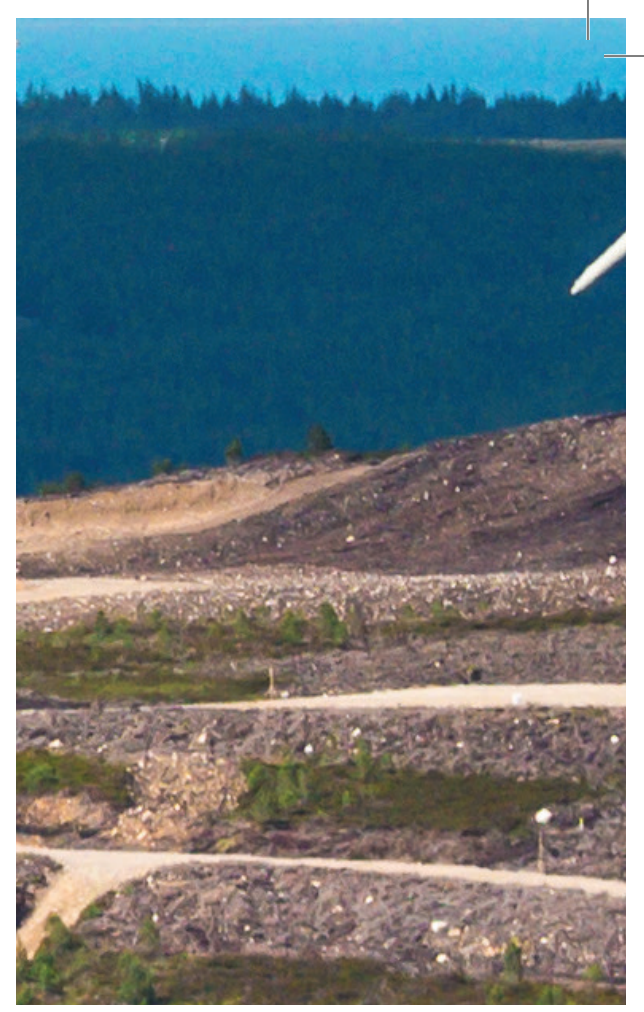
Surveys and assessments are undertaken by a team of specialist consultants. The results and findings will be detailed in an EIA Report, which will be publicly available following submission of our application.

**It will include:**

- Landscape and Visual Amenity;
- Hydrology and Peat;
- Ecology and Ornithology;
- Cultural Heritage;
- Noise;
- Traffic and Transport;
- Socio-economics; and
- Climate Change







# Peatlands

---

**Understanding the peatland habitats and quality on site has been a key consideration in the design of Loch Liath Wind Farm.**

---

Detailed peat surveys were undertaken at an early stage of this project to understand peat depths and quality across the site. The surveys found that the peat varied greatly, ranging from depths less than 50cm, to localised areas with depths greater than 5m.

The scheme has been designed to reduce infrastructure on areas of deep peat, and to avoid the sensitive habitats which it supports.



*Damaged peatland can be restored through our Habitat Management Plan, promoting a healthier environment for plants and animals*

**Peat is a valuable resource for our planet. It acts as a carbon store, supports valuable habitats and provides a water management system. Our project will propose the implementation of a Habitat Management Plan which will aim to improve the quality of peatland habitats on site, including reducing areas of exposed peat which release carbon if left untreated and will likely degrade further overtime.**

**Our Habitat Management Plan is at an early stage of design and we would be happy to discuss it with you.**

---





# Local Economic Assessment

---

We want to find out more about the local economy and how we can support it throughout the lifetime of the wind farm. We have commissioned additional research to inform our assessment of the development and identify opportunities.

---

This includes consulting tourism ambassadors, a local hill guide and “access for all” experts, as well as local organisations. Extensive analysis of any economic impacts, positive and negative, has been carried out and includes:

- **Likely investment for local suppliers** throughout construction and operation of the wind farm
- **Local business views** towards wind farms
- **Tourism attitudes and opportunities**
- **Analysis of population and demographics** of the area
- **Improved access** for recreational walkers and cyclists



This information will be published as part of our planning application.

---





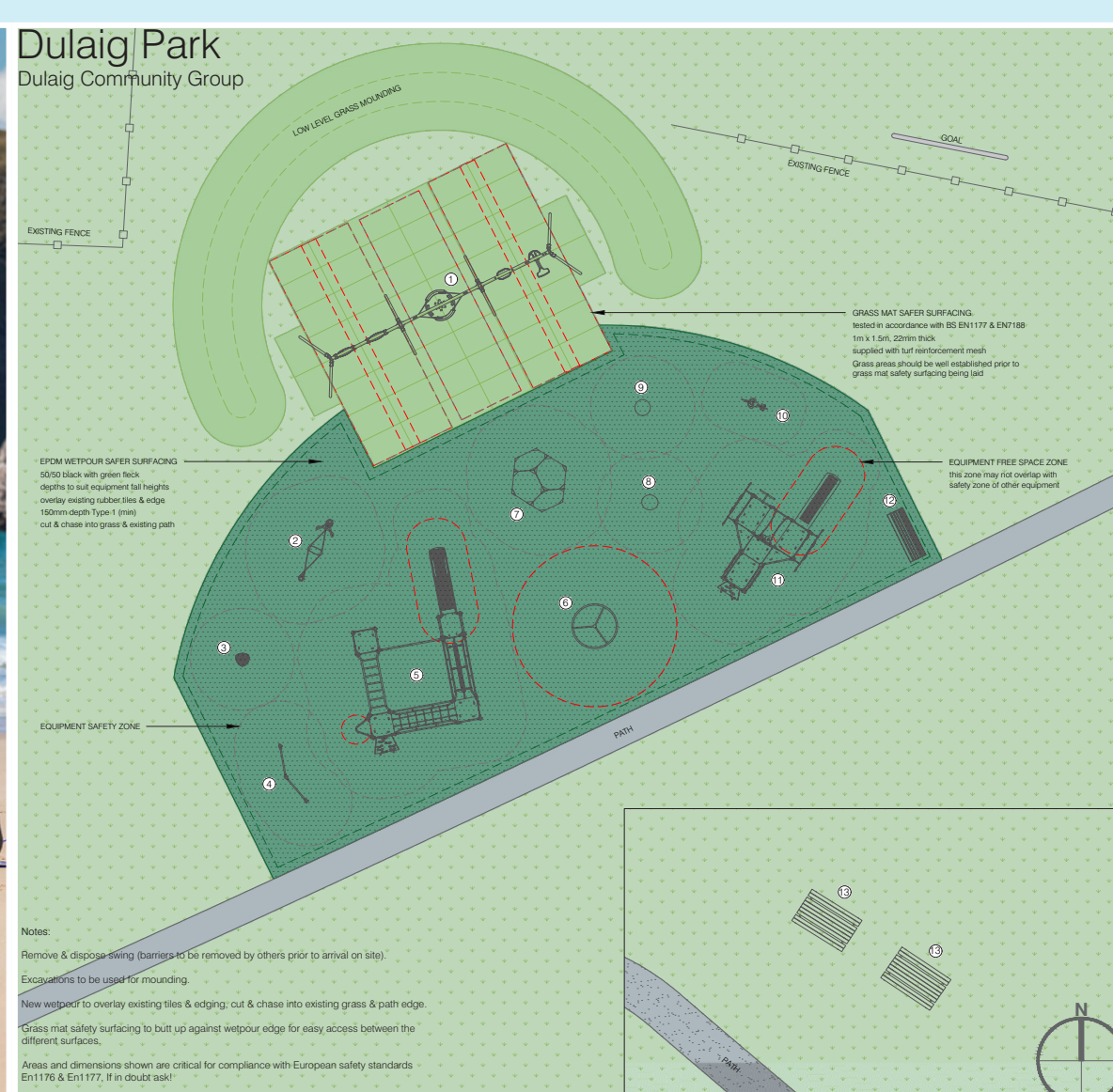
# Community Benefits

We would like our wind farms to be considered a local asset. We look forward to engaging with the communities to find out different ways we can bring positive benefits to the local area.

Some examples of projects that have received funding through Community Benefit Funds



New business grants – North Coast Watersports



New and upgraded playgrounds



Funding for School Uniform Banks



Maintaining and Upgrading Recreational Paths

## Community Benefit Fund

We are committed to setting up a Community Benefit Fund that delivers £5,000 per MW installed per year in line with Scottish Government recommendations.

## Shared Ownership

We are open to offering shared ownership on our projects, if there is local interest. We are keen to hear your views on enabling the community to have a financial share in the project.

## Local Supply Chain

Visit our project website to find out how your local business can register to find out more about the opportunities to provide supplies and services to help deliver our projects.

## Improved Broadband

We require a reliable broadband service to operate our wind turbines and can explore the potential for improving the local infrastructure as the wind farm is connected. You may wish to explore this further, partially funding works through the Community Benefit Fund.





# Thank you for visiting

Your comments and feedback are important to us.



We are continuing work on our comprehensive Environmental Impact Assessment Report (EIAR) to be submitted with our application. You can find out more about what is included within the EIAR on our project website.

When the proposal is submitted interested parties and statutory consultees will have the opportunity to formally comment on the application. All of the information will be available to view on the consenting authority's and our project website at the time of submission.



Please return the freepost reply card provided.



Visit the project website.



UKProjects@statkraft.com



Phone the project hotline:  
0800 772 0668