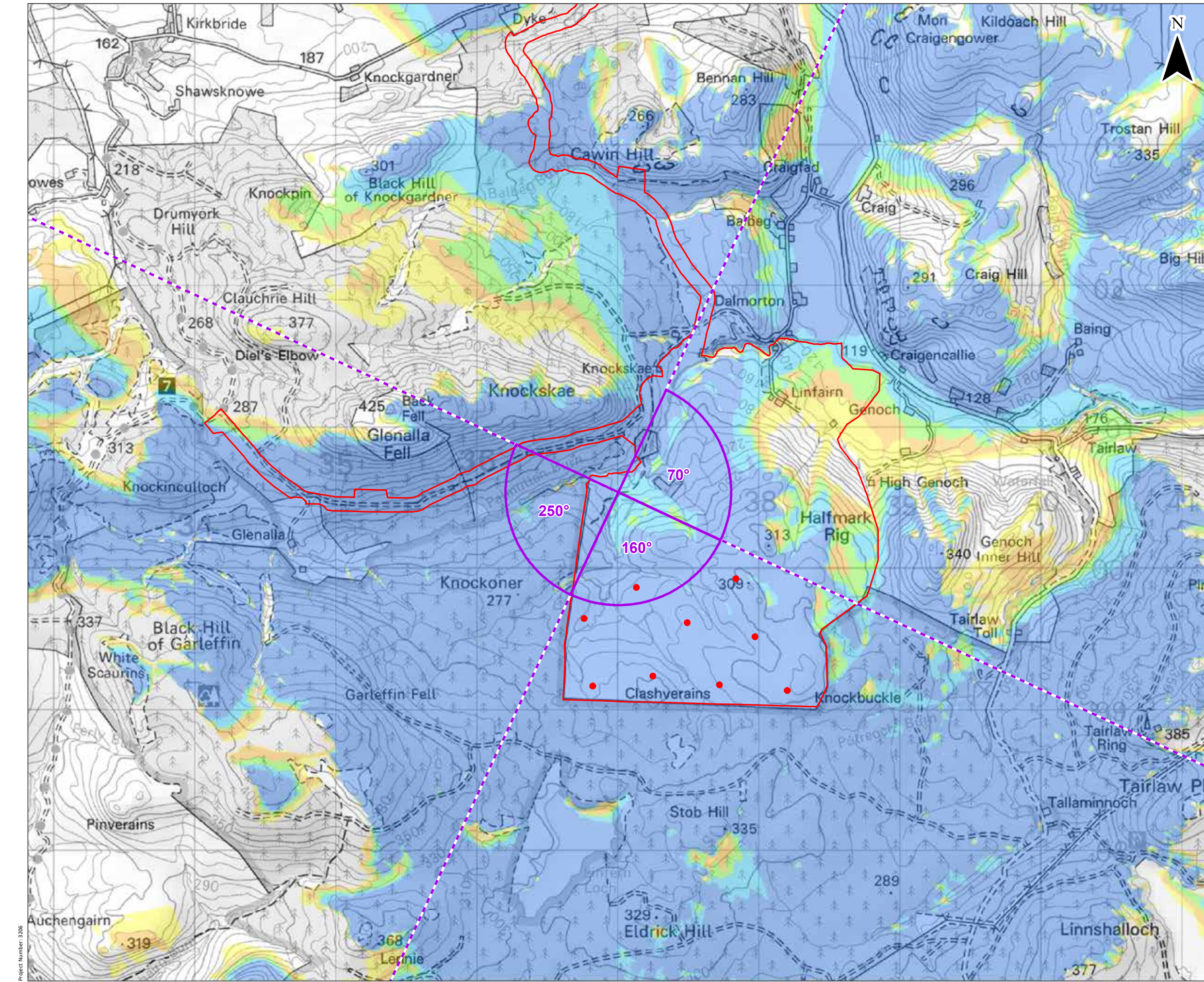


© Crown copyright and database rights 2021. Ordnance Survey 0100031673. Contains OS data © Crown copyright and database right (2021).



© Crown copyright and database rights 2021. Ordnance Survey 0100031673. Contains OS data © Crown copyright and database right (2021).

**KEY**

- Site Boundary
- Proposed Turbine
- 10 km Radii
- 45 km LVIA Study Area
- Viewpoint Location
- Cumulative Wireline (90°HFOV)

**Blade Tip ZTV**

**No. of Turbines Theoretically Visible**

- 1 - 2
- 3 - 4
- 5 - 6
- 7 - 8
- 9

Blade tip: 180 / 200m | Observer height: 2m  
 DTM: OS T5/T50 DTM | Surface features: Excluded  
 DTM resolution: 10m | Earth curvature: Included

0 0.5 1 km  
 Scale 1:25,000 @ A3

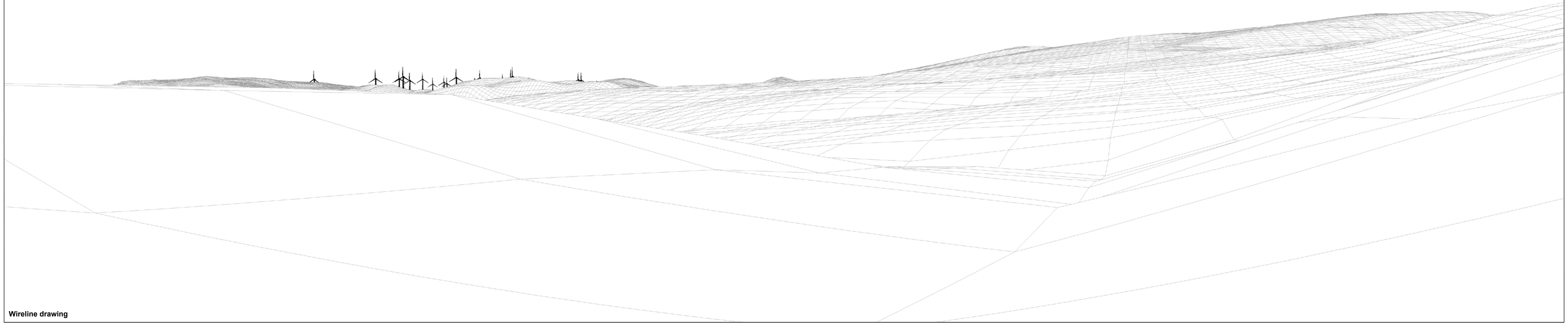
ITENERGISED

Knockcronan Wind Farm  
 Environmental Impact Assessment Report  
 Figure 6.49a

Viewpoint F: Core path SA47 / Bannan Walk  
 - Knockoner Burn crossing

Date: 08/11/2021 | Drawn by: JM | Checked by: SG | Version: V1

Dersalloch (4.5km)

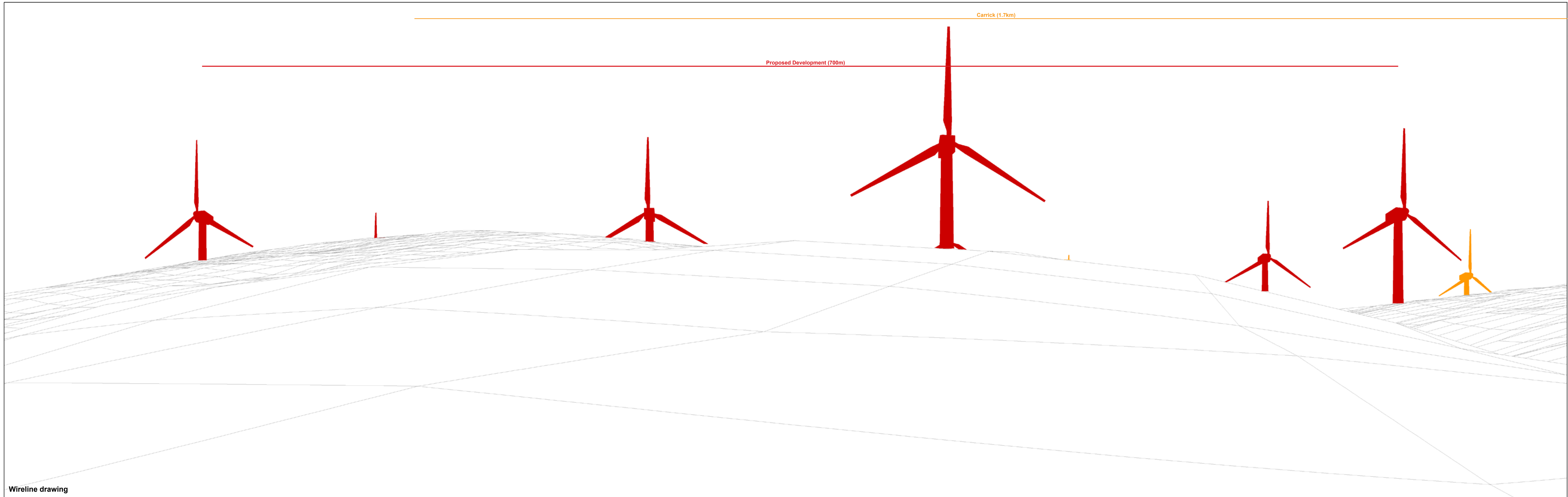


Wireline drawing

OS reference: 237003 E 600538 N  
Eye level: 204.2 mAOD  
Direction of view: 70°  
Nearest turbine: 687 m

Horizontal field of view: 90° (cylindrical projection)  
Principal distance: 522 mm  
Paper size: 841 x 297 mm (half A1)  
Correct printed image size: 820 x 130 mm

Figure 6.49b  
Viewpoint F: Core path SA47 / Bennan Walk – Knockoner Burn crossing



Wireline drawing

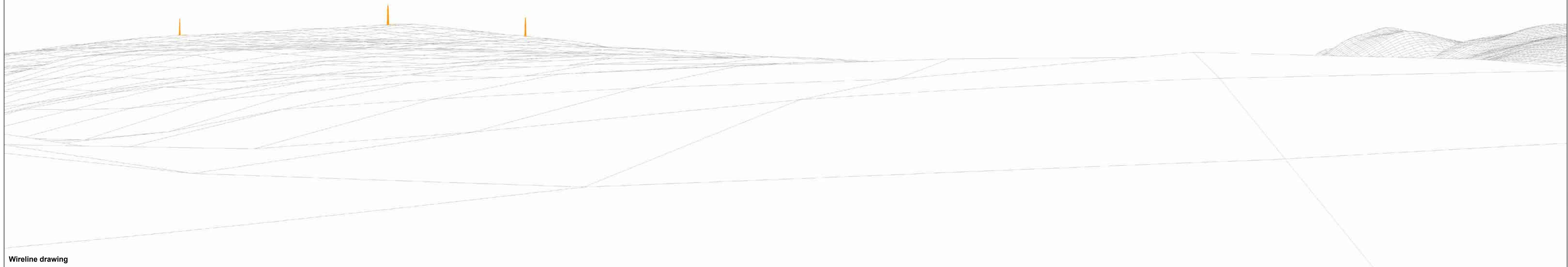
OS reference: 237003 E 600538 N  
 Eye level: 204.2 mAOD  
 Direction of view: 160°  
 Nearest turbine: 687 m

Horizontal field of view: 90° (cylindrical projection)  
 Principal distance: 522 mm  
 Paper size: 841 x 297 mm (half A1)  
 Correct printed image size: 820 x 130 mm

Figure 6.49c  
 Viewpoint F: Core path SA47 / Bennan Walk – Knockoner Burn crossing

Knockcronal

Carrick (1.7km)



Wireline drawing

**OS reference:** 237003 E 600538 N  
**Eye level:** 204.2 mAOD  
**Direction of view:** 250°  
**Nearest turbine:** 687 m

**Horizontal field of view:** 90° (cylindrical projection)  
**Principal distance:** 522 mm  
**Paper size:** 841 x 297 mm (half A1)  
**Correct printed image size:** 820 x 130 mm

**Figure 6.49d**  
Viewpoint F: Core path SA47 / Bennan Walk – Knockoner Burn crossing

Knockcronal