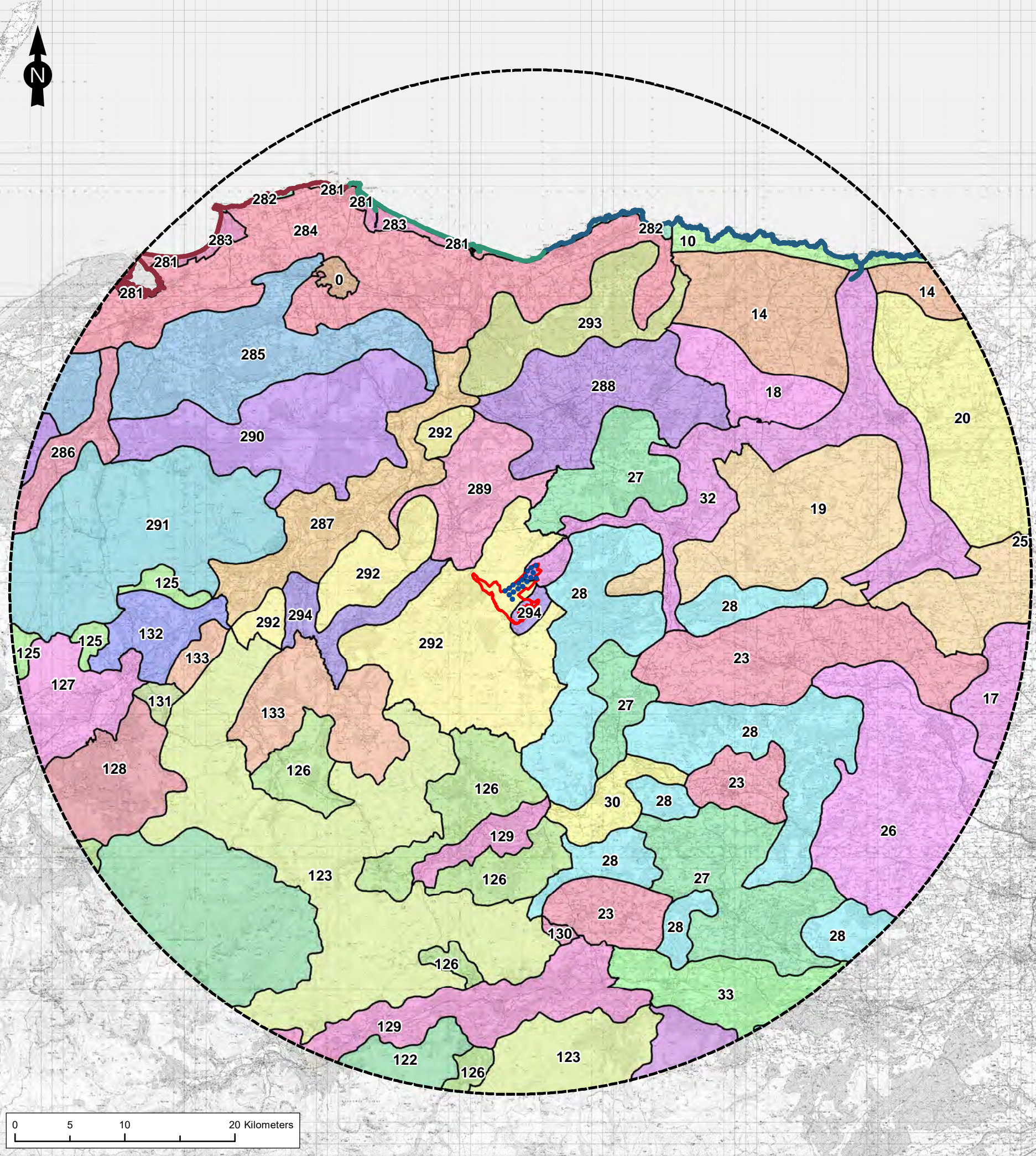



C:\Users\GMCLACHLAN\OneDrive - Ramboll\Projects\RemoteWorking\1620010178 Craig Watch - Wind Farm Planning Services\GIS\MapFiles\ScopingReport\LVIA\162_10178_Fig3.2_LCA_B.mxd

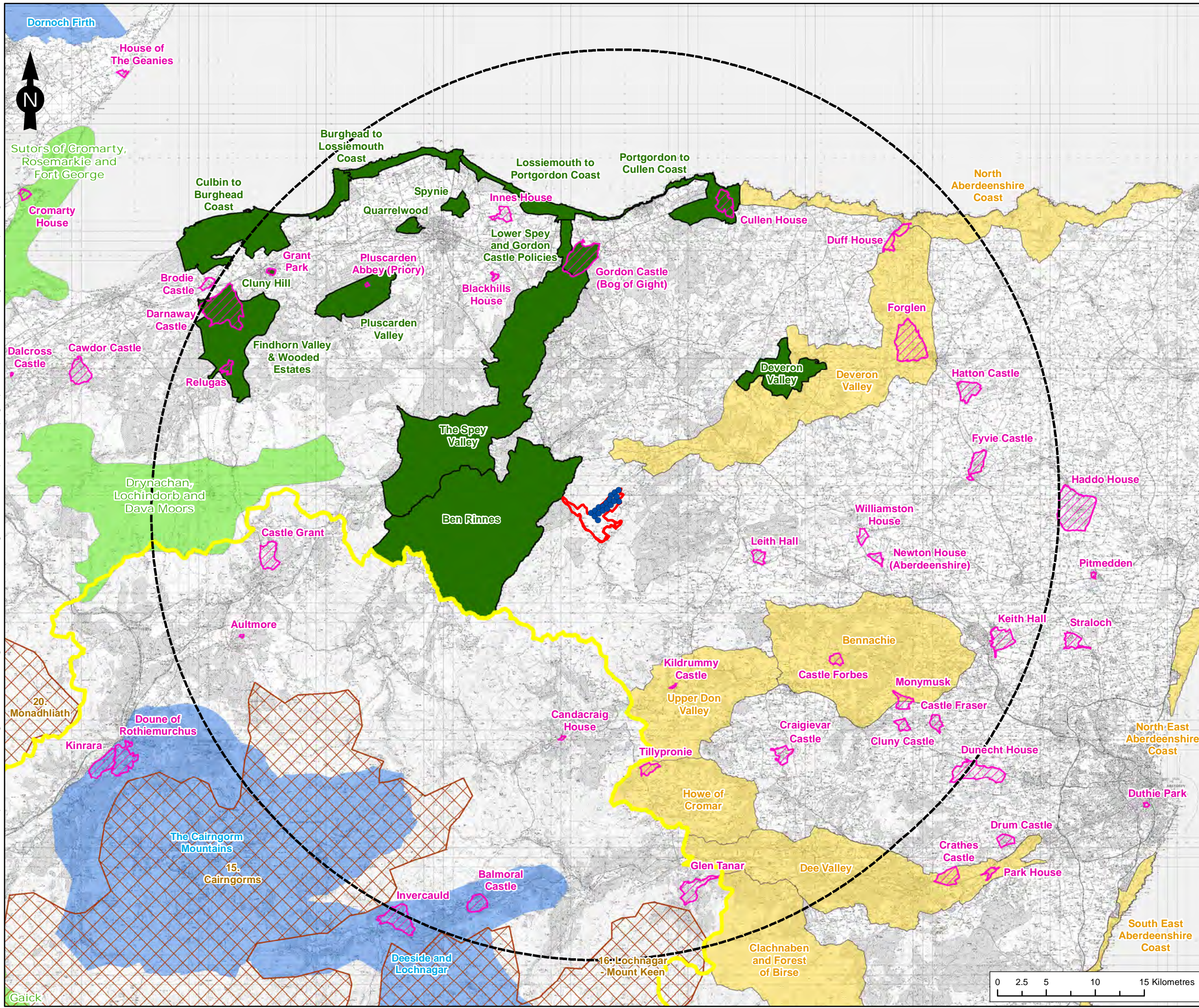


- Landscape Character Types**
- 0;Urban
 - 10;Cliffs and Rocky Coast - Aberdeenshire
 - 14;Gently Undulating Coastal Farmland
 - 17;Coastal Agricultural Plain - Aberdeenshire
 - 18;Low Hills and Basins
 - 19;Farmed Rolling Ridges and Hills
 - 20;Undulating Agricultural Heartland
 - 23;Farmed Basin - Aberdeenshire
 - 25;Farmed Strath - Aberdeenshire
 - 26;Wooded Estates - Aberdeenshire
 - 27;Farmed Moorland Edge - Aberdeenshire
 - 28;Outlying Hills & Ridges
 - 29;Summits and Plateaux - Aberdeenshire
 - 30;Narrow Winding Farmed Valley
 - 32;Farmed and Wooded River Valleys
 - 33;Broad Wooded Valley with Estates
 - 122;Mountain Massif - Cairngorms
 - 123;Smooth Rounded Hills - Cairngorms
 - 125;Rolling Uplands - Cairngorms
 - 126;Upland Glen - Cairngorms
 - 127;Upland Strath
 - 128;Forested Upland Fringe
 - 129;Broad Glen with Estates
 - 130;Farmed Basin - Cairngorms
 - 131;Upland Basin - Cairngorms
 - 132;Undulating Wooded Farmland - Cairngorms
 - 133;Farmed Straths and Glens
 - 281;Beaches, Dunes and Links - Moray & Nairn
 - 282;Cliffs and Rocky Coast - Moray & Nairn
 - 283;Coastal Forest
 - 284;Coastal Farmlands - Moray & Nairn
 - 285;Rolling Farmland and Forests - Moray & Nairn
 - 286;Narrow Wooded Valley - Moray & Nairn
 - 287;Broad Farmed Valley
 - 288;Upland Farmland
 - 289;Upland Farmed Valleys
 - 290;Upland Moorland and Forestry
 - 291;Open Rolling Upland
 - 292;Open Upland
 - 293;Low Forested Hills
 - 294;Upland Valleys - Moray & Nairn

- Legend**
- Site Boundary
 - 45 km Buffer from the outer turbines of the Proposed Development
 - Preliminary Turbine Location (Scoping Stage) (200m tip height)
- Seascape Character Types**
- Type 2 - Rocky Coastline / Open Sea Views
 - Type 3 - Deposition Coastline, Open Views
 - Type 4 - Outer Firths

Figure Title	
Figure 3.2: SNH Landscape Character Types	
Project Name	
Craig Watch Wind Farm Scoping Report	
Project Number	Figure No.
1620010178	3.2
Date	Prepared By
October 2020	CF
Scale	Issue
1:380,000 @A3	1
Client	
Craig Watch Wind Farm Limited	
	

C:\Users\GMCLACHLAN\OneDrive - Ramboll\Projects\RemoteWorking\1620010178 Craig Watch - Wind Farm Planning Services\GIS\MapFiles\ScopingReport\LVIA\162_10178_Fig3.3_LandscapeDesignations_B.mxd



Legend


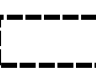
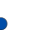




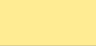



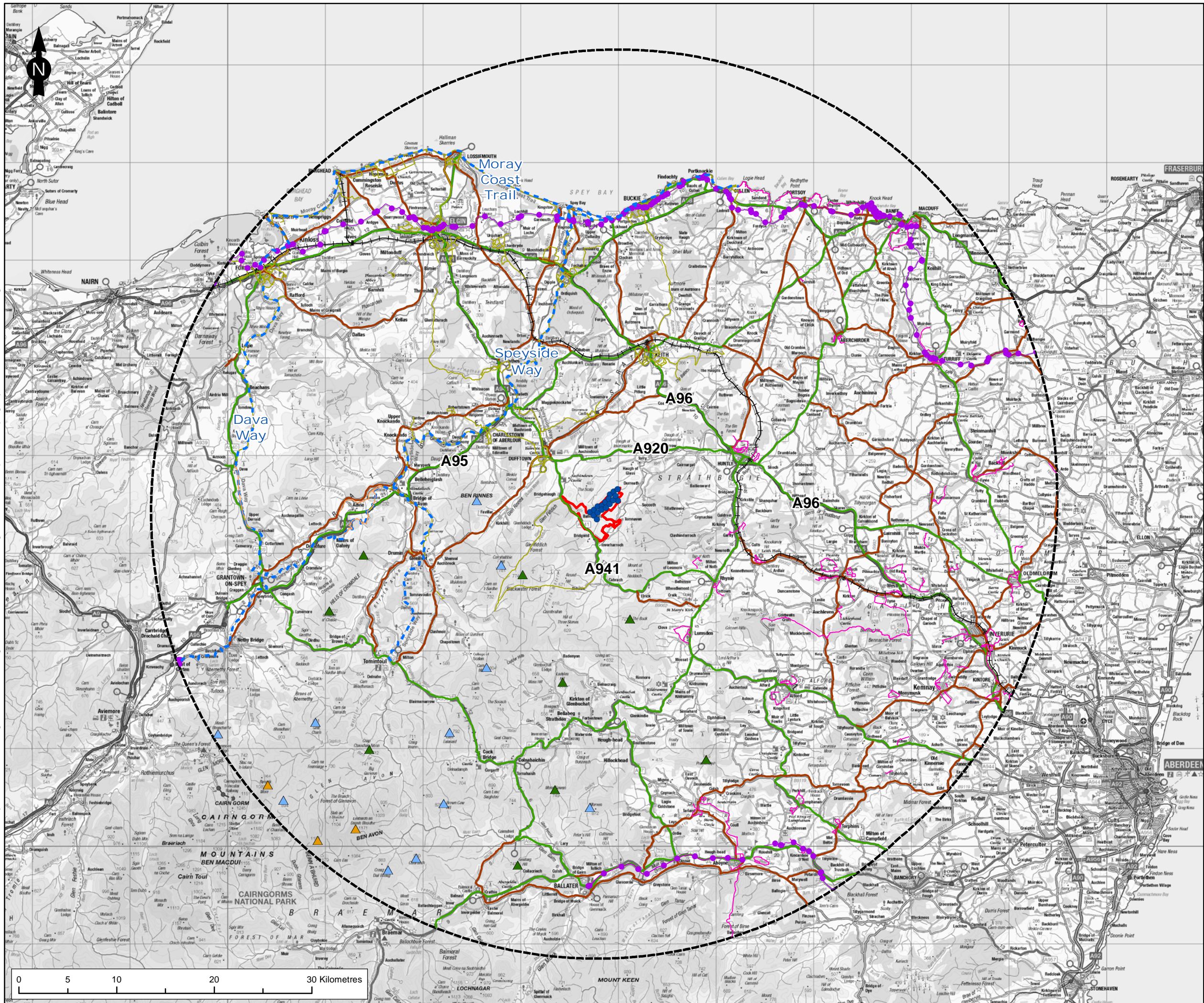
-  Site Boundary
-  45 km Buffer from the outer turbines of the Proposed Development
-  Preliminary Turbine Location (Scoping Stage) (200m tip height)
-  National Scenic Areas
-  Wild Land Areas
-  The Highland Council Special Landscape Area
-  Moray Council Special Landscape Areas
-  Aberdeenshire Council Special Landscape Areas
-  Gardens and Designed Landscapes
-  Cairngorms National Park

Figure Title	
Figure 3.3: Landscape Designations	
Project Name	
Craig Watch Wind Farm Scoping Report	
Project Number	Figure No.
1620010178	3.3
Date	Prepared By
November 2020	CF/GM
Scale	Issue
1:370,000 @ A3	1
Client	
Craig Watch Wind Farm Limited	
	

C:\Users\GMCLACHLAN\OneDrive - Ramboll\Projects\RemoteWorking\1620010178 Craig Watch - Wind Farm Planning Services\GISMapFiles\ScopingReport\1620010178 Fig3.4_ Recreation_B.mxd



Legend

- Site Boundary
- 45 km Buffer from the outer turbines of the Proposed Development
- Preliminary Turbine Location (Scoping Stage) (200m tip height)
- ▲ Corbetts (between 2500 and 3000 feet high)
- ▲ Grahams (between 2000 and 2500 feet high)
- ▲ Munro (over 3000 feet high)
- - - Scotlands Great Trails
- Highland Council Core Paths
- Moray Council Core Paths
- Aberdeenshire Council Core Paths
- National Cycle Route
- A Road
- B Road
- + + + + + Rail line

Figure Title
Figure 3.4: Visual Receptors (Transport routes, Recreation routes and Summits)

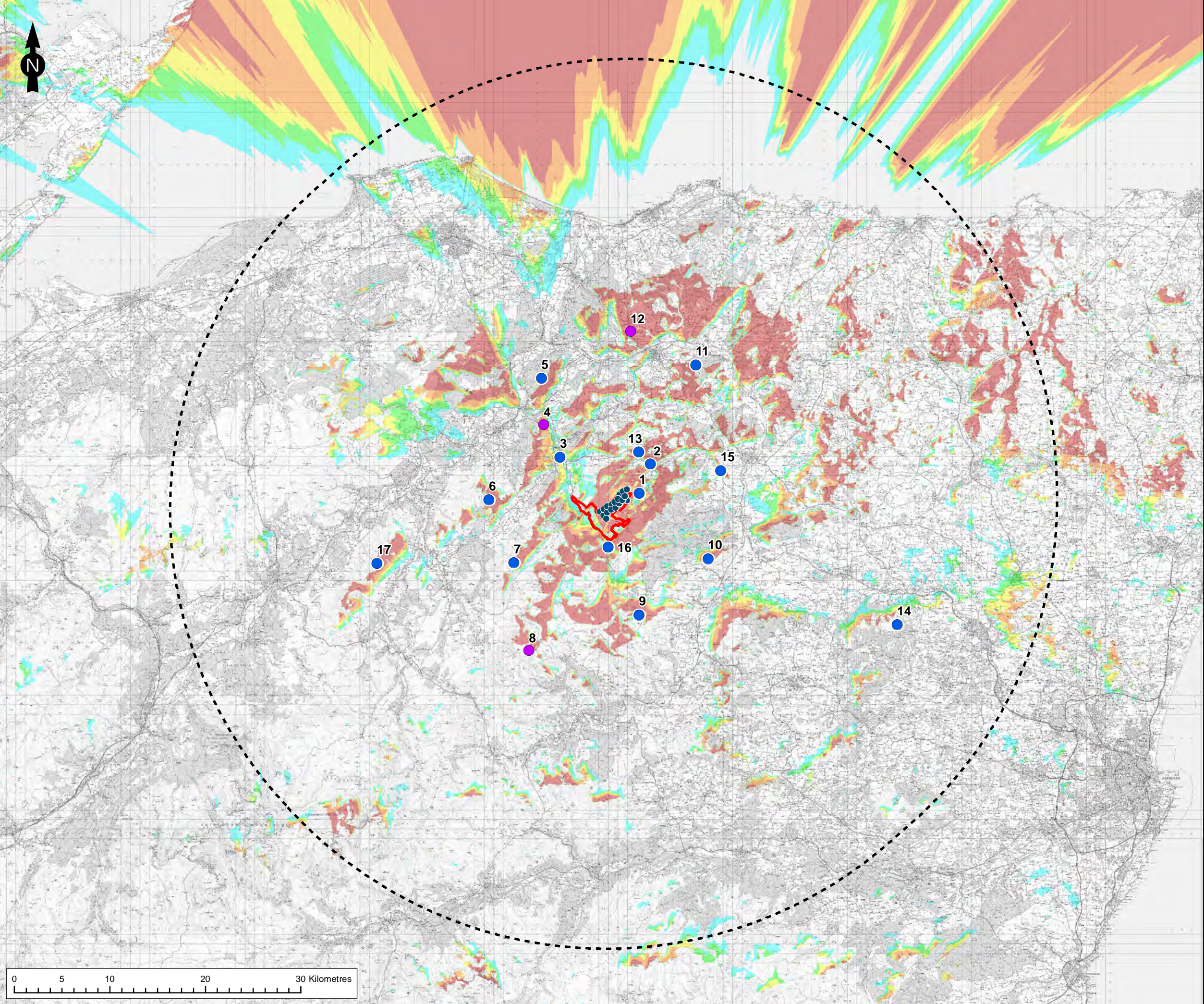
Project Name
Craig Watch Wind Farm Scoping Report

Project Number 1620010178	Figure No. 3.4
Date November 2020	Prepared By CF/GM
Scale 1:370,000 @ A3	Issue 1

Client
Craig Watch Wind Farm Limited



C:\Users\GMCLACHLAN\OneDrive - Ramboll\Projects\RemoteWorking\1620010178 Craig Watch - Wind Farm Planning Services\GIS\MapFiles\ScopingReport\LVIA\162_10178_Fig3.5_VPs_ZTV_C.mxd



Legend

- Site Boundary
- 45 km Buffer from the outer turbines of the Proposed Development
- Preliminary Turbine Location (Scoping Stage) (200m tip height)

Viewpoint Type

- Daytime
- Daytime and Night time

Number of turbines visible at blade tip level (200m)

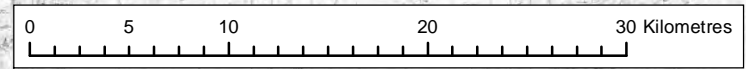
- 1 - 4
- 5 - 8
- 9 - 12
- 13 - 16
- 17 - 18

1. The ZTV analysis does not take into account the screening effect of vegetation, buildings and other surface features.
 2. Predicted visibility based on a viewer eye height 2m above ground.
 3. Visibility calculated using Ordnance Survey Terrain 5 DTM on a 5m Grid.
 4. Effect of earth curvature and light refraction is included.

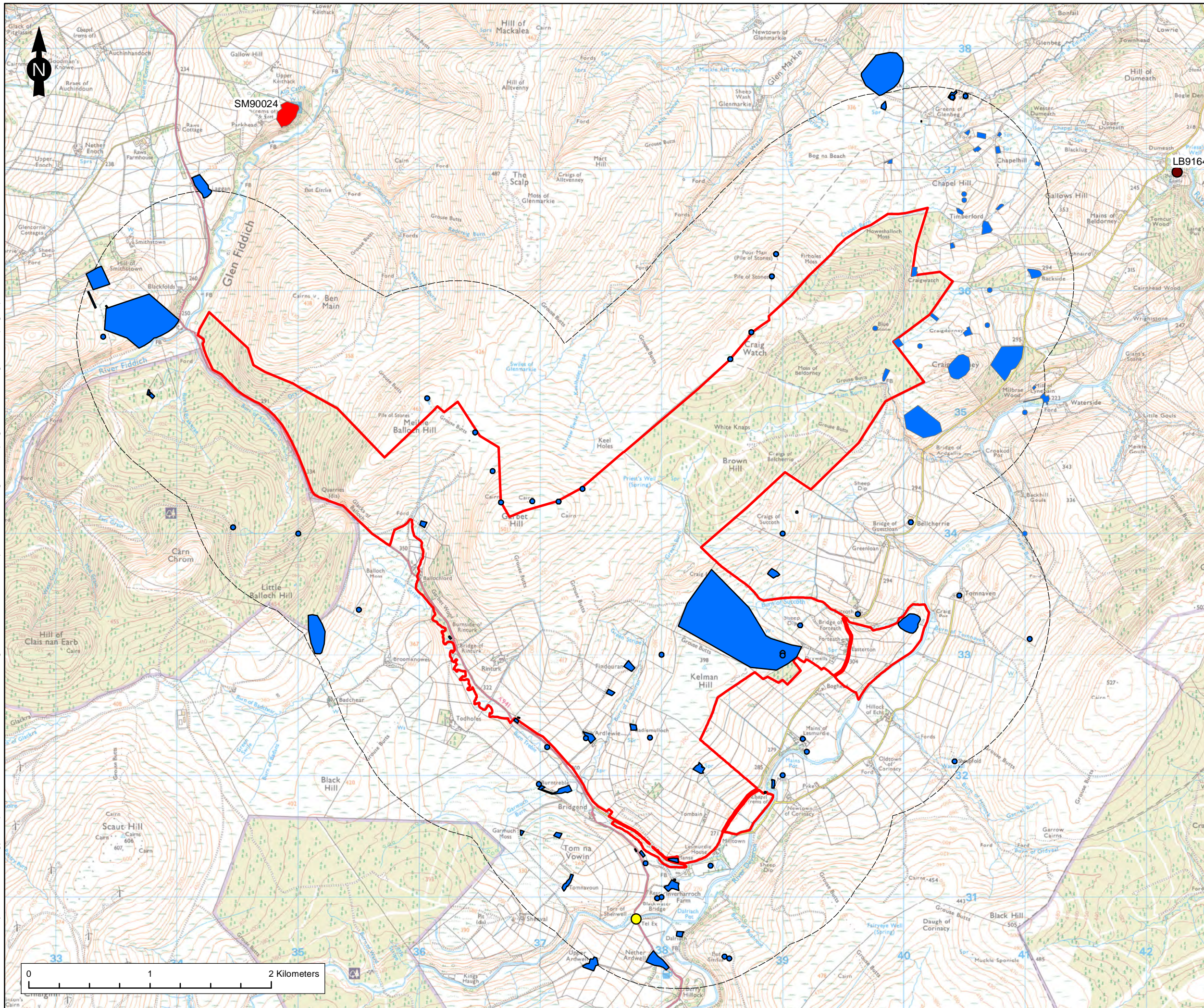
Figure Title
Figure 3.5: LVIA Viewpoints with 200m ZTV

Project Name Craig Watch Wind Farm Scoping Report	
Project Number 1620010178	Figure No. 3.5
Date November 2020	Prepared By CF/GM
Scale 1:380,000 @ A3	Issue 1
Client Craig Watch Wind Farm Limited	

RAMBOLL



C:\Users\Victoria.Oleksy\AOC Archaeology\Group\Data Portal - 25412 - Car Duibh & Craig Watch Wind Farms\Graphics\GIS\Draft figures\Scoping\162_10178_Fig3.6_ScopingReport.mxd



- Legend**
- Site Boundary
 - 1km Study Area
 - Scheduled Monuments
 - HER Assets
 - Category A Listed Building
 - Category B Listed Building
 - Category C Listed Building

Figure Title
Figure 3.6: Cultural Heritage Constraints within 1 km of the Site

Project Name
Craig Watch Wind Farm Scoping Report

Project Number 1620010178	Figure No. 3.6
------------------------------	-------------------

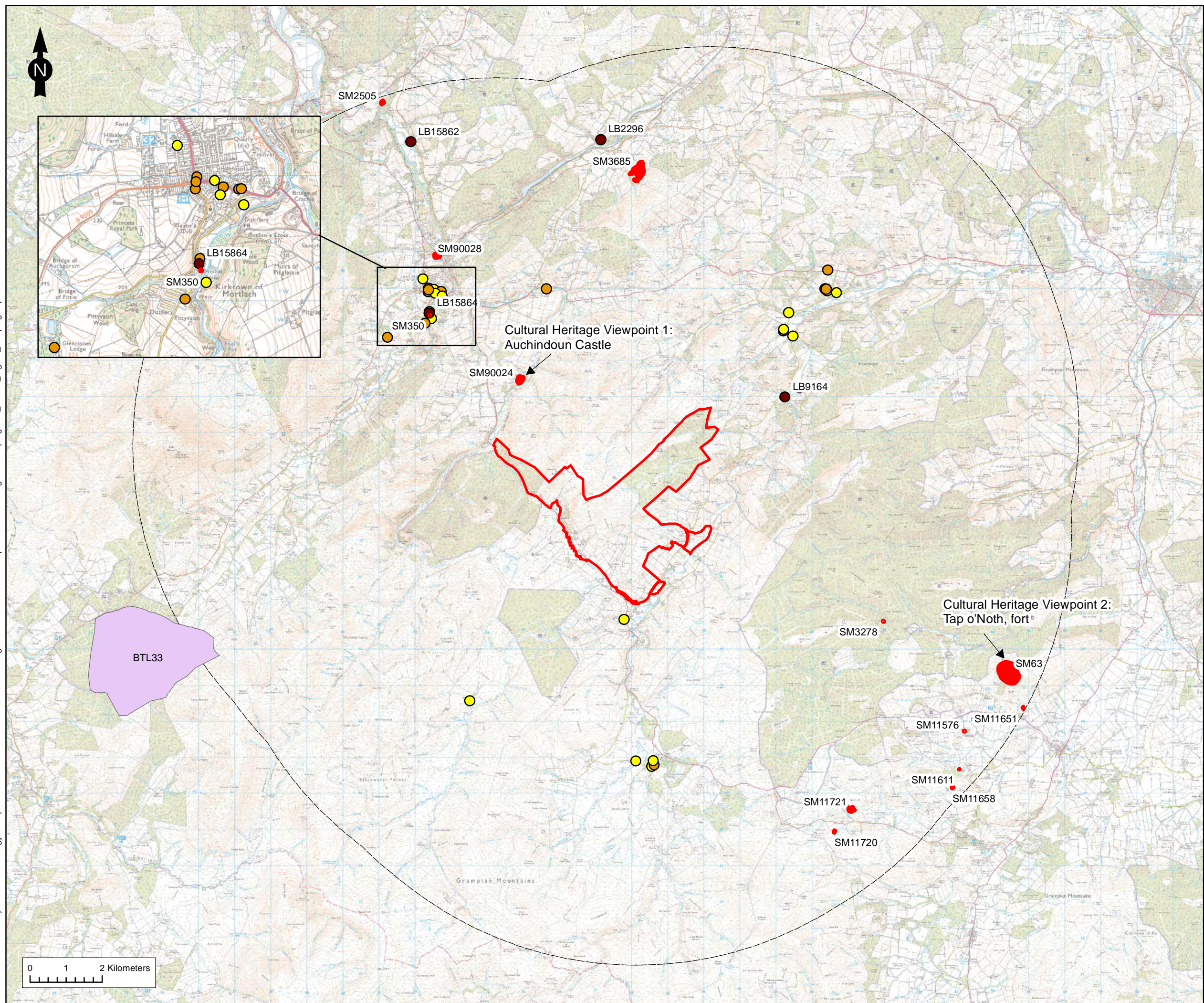
Date October 2020	Prepared By VO
----------------------	-------------------

Scale 1:30,000 @ A3	Issue 1
------------------------	------------

Client
Craig Watch Wind Farm Limited



C:\Users\Victoria.Oleksy\AOC Archaeology\Group\Data Portal - 25412 - Car Duibh & Craig Watch Wind Farms\Graphics\GIS\Draft figures\Scoping\162_10178_Fig3.7_ScopingReport.mxd



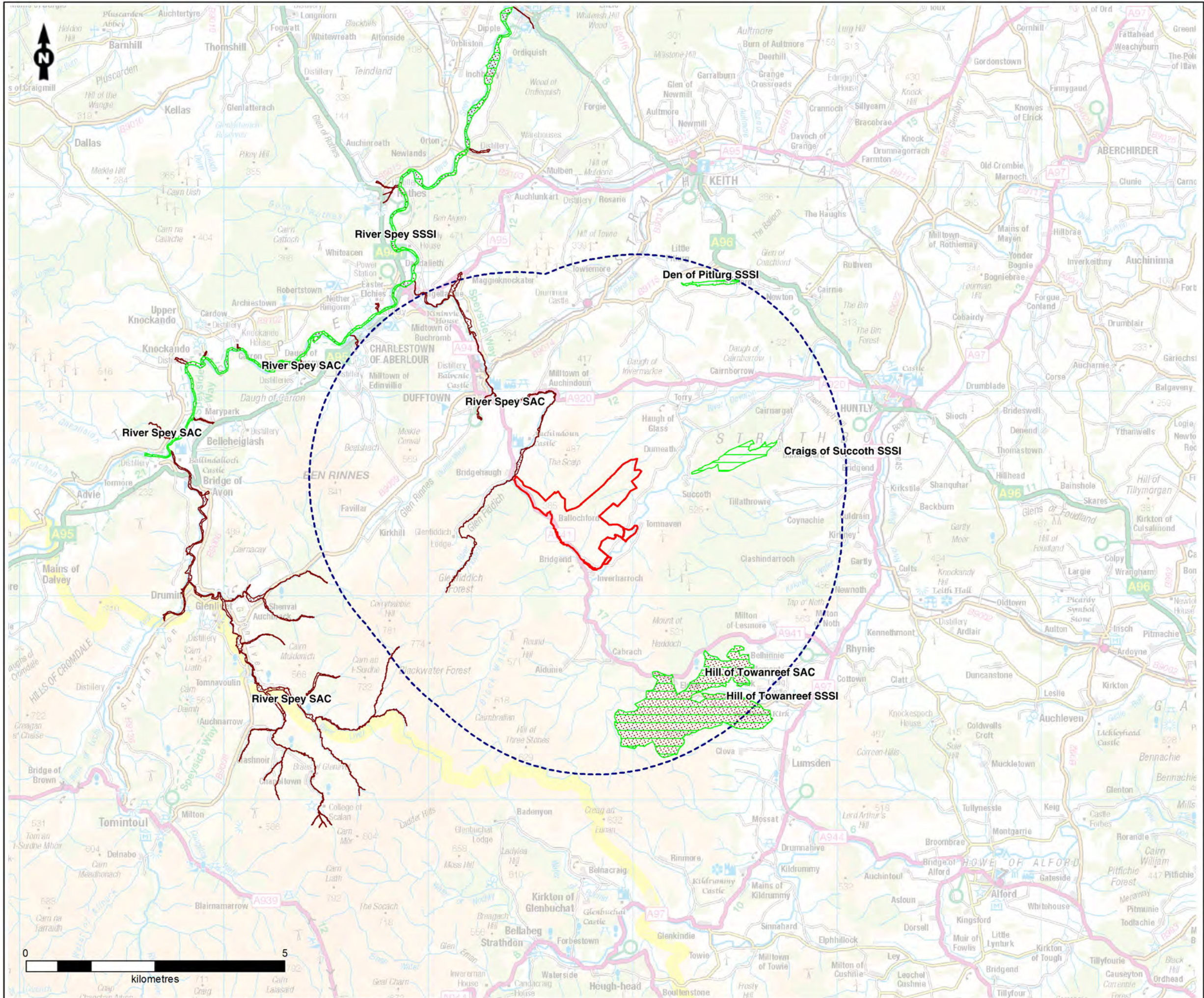
Legend

- Site Boundary
- 10km Study Area
- Scheduled Monuments*
- Inventory Battlefields
- Category A Listed Building
- Category B Listed Building
- Category C Listed Building

* The outline of the Scheduled Monument polygons has been increased to a width of 3pt to ensure they can be seen at this scale

Figure Title
Figure 3.7: Designated Heritage Constraints within 10 km of the Site

Project Name Craig Watch Wind Farm Scoping Report	
Project Number 1620010178	Figure No. 3.7
Date October 2020	Prepared By VO
Scale 1:100,000 @A3	Issue 1
Client Craig Watch Wind Farm Limited	



Legend

- Site boundary
- 10km buffer
- SACs
- SSSIs

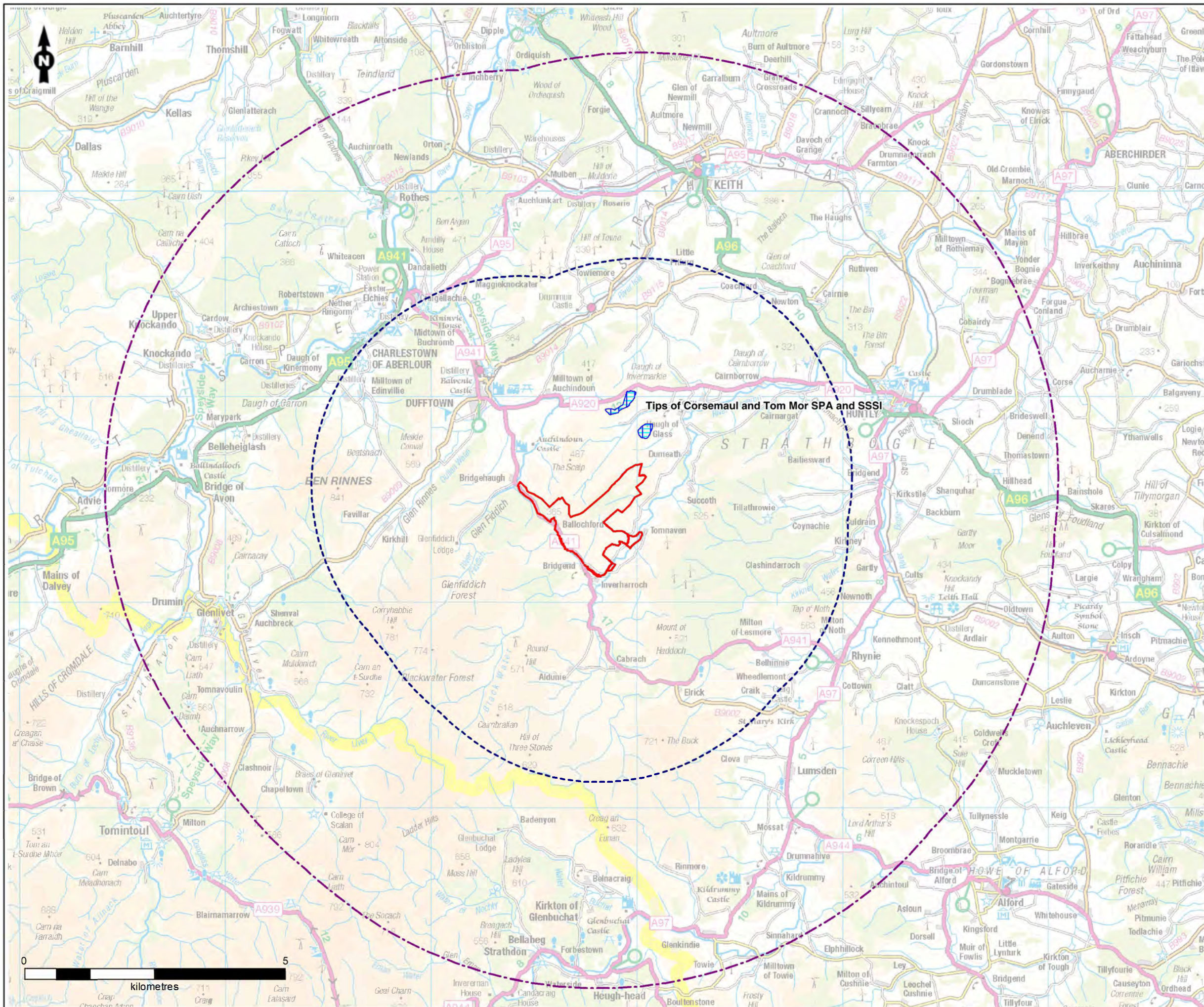
Figure Title
Figure 3.8: Ecological Statutory Designated Sites

Project Name
Craig Watch Wind Farm Scoping Report

Project Number 1620010178	Figure No. 3.8
Date October 2020	Prepared by MJR
Scale 1:180,000 @A3	Issue 1

Client
Craig Watch Wind Farm Limited





Legend

- Site boundary
- 10km buffer
- 20km buffer

Designated Sites

- SPAs
- SSSIs

Figure Title
Figure 3.9a: Ornithological Statutory Designated Sites

Project Name
Craig Watch Wind Farm Scoping Report

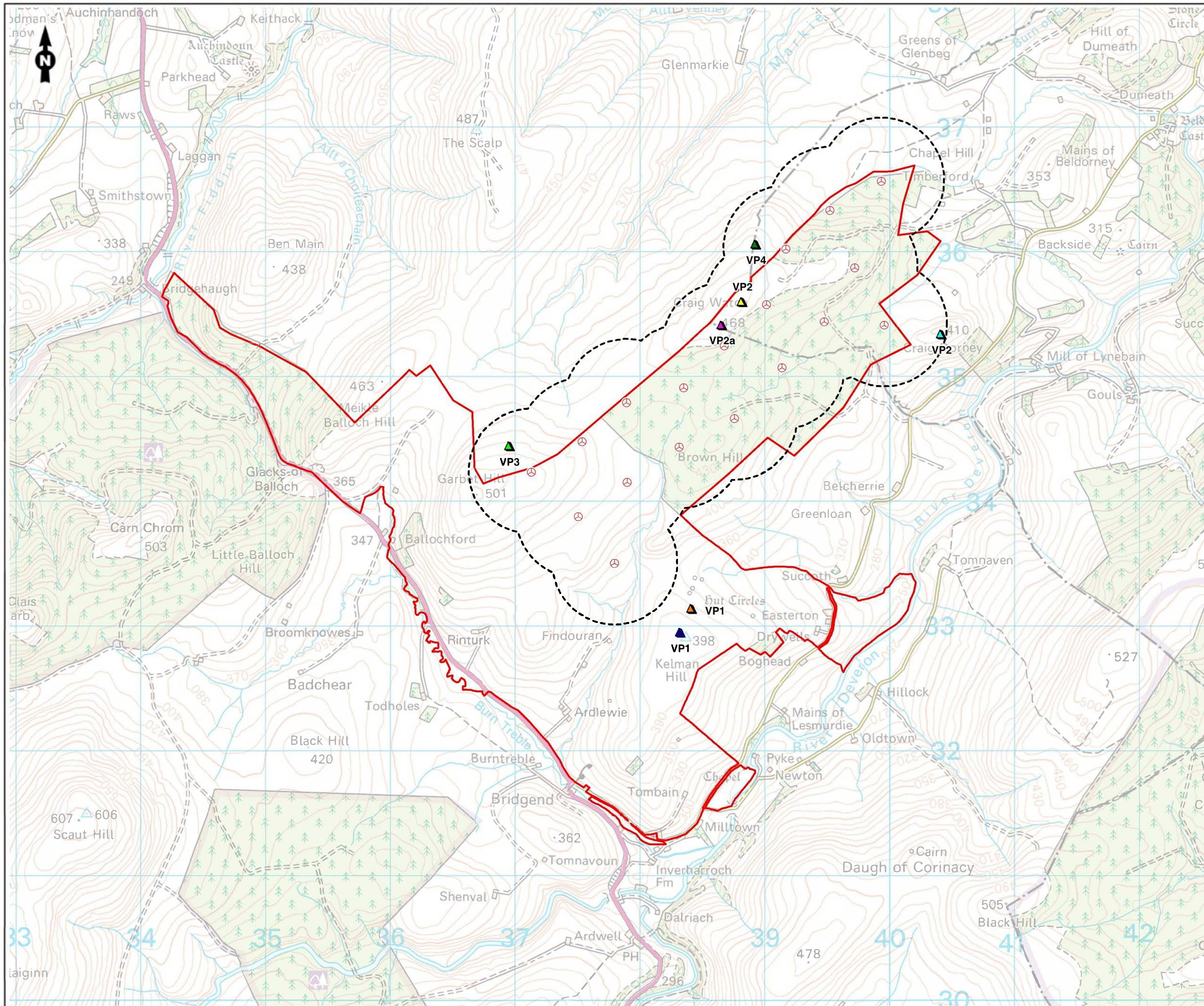
Project Number 1620010178	Figure No. 3.9 a
------------------------------	---------------------

Date November 2020	Prepared by MJR
-----------------------	--------------------

Scale 1:180,000 @A3	Issue 1
------------------------	------------

Client
Craig Watch Wind Farm Limited





- Legend**
- Site boundary
 - 500m proposed turbine buffer
 - ▲ Proposed turbines
- Year 1 Vantage Point (VP) Locations**
- ▲ VP1 NJ 38321 32944
 - ▲ VP2 NJ 40410 35332 (March 2019 to August 2019)
 - ▲ VP2a NJ 38653 35407 (September 2019 to February 2020)
 - ▲ VP3 NJ 36952 34438
 - ▲ VP4 NJ 38923 36054
- Year 2 Vantage Point (VP) Locations**
- ▲ VP1 NJ 38411 33134
 - ▲ VP2 NJ 38814 35594

Figure Title
Figure 3.9b: Vantage Point (VP) Survey Plan

Project Name
Craig Watch Wind Farm Scoping Report

Project Number 1620010178	Figure No. 3.9b
------------------------------	--------------------

Date October 2020	Prepared by MJR
----------------------	--------------------

Scale 1:30,000 @A3	Issue 1
-----------------------	------------

Client
Craig Watch Wind Farm Limited

