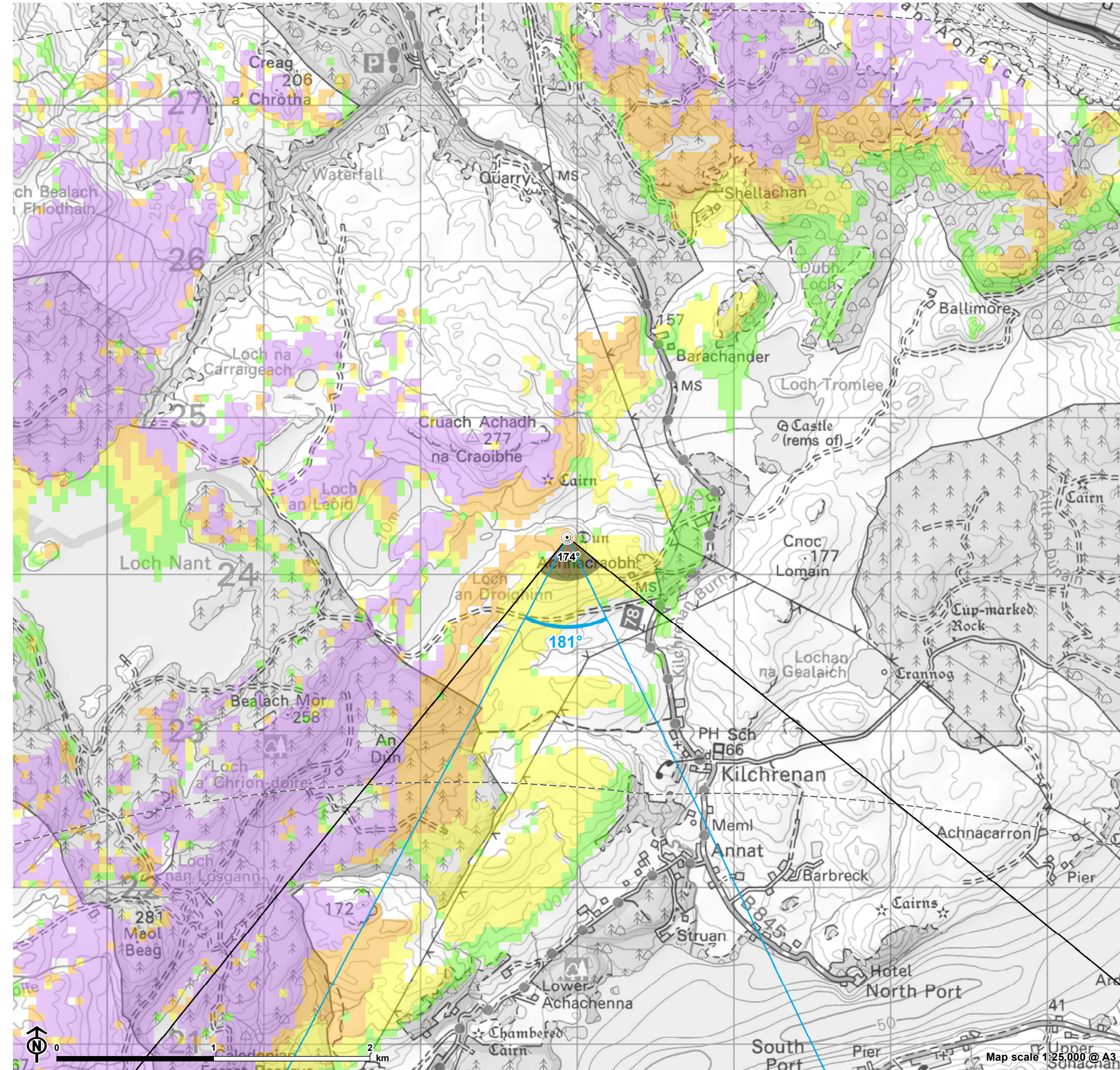
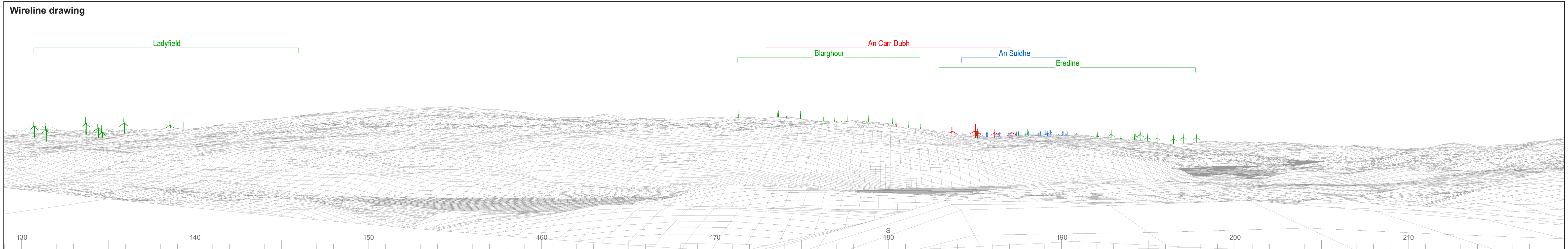


Figure 10.5.17:
Viewpoint CH17 - Caisteal Suidhe Cheannaidh, dun 470m NW of
Achnacraobh (SM4120)



- Site boundary
 - + Turbine layout
 - 5km intervals from outermost turbines
 - 45km from outermost turbines
 - o Viewpoint
- Theoretical blade tip visibility (180m)**
- 1-3 turbines visible
 - 4-6 turbines visible
 - 7-9 turbines visible
 - 10-13 turbines visible
 - ∠ 53.5° Field of View
 - ∠ 90° Field of View

The ZTV is calculated to turbine tip height (180m) from a viewing height of 2m above ground level. The terrain model assumes bare ground and is derived from OS Terrain 50 height data (obtained from Ordnance Survey in July 2019). Earth curvature and atmospheric refraction have been taken into account. The ZTV was calculated using ArcMap 10.8.1 software.



Wireline drawing

© Crown copyright and database rights 2023. Ordnance Survey data. Licence number: 010031073



OS reference: 202937E 724238N
 AOD: 212.91 m
 Direction of view: 174°
 Nearest turbine: 11.59 km

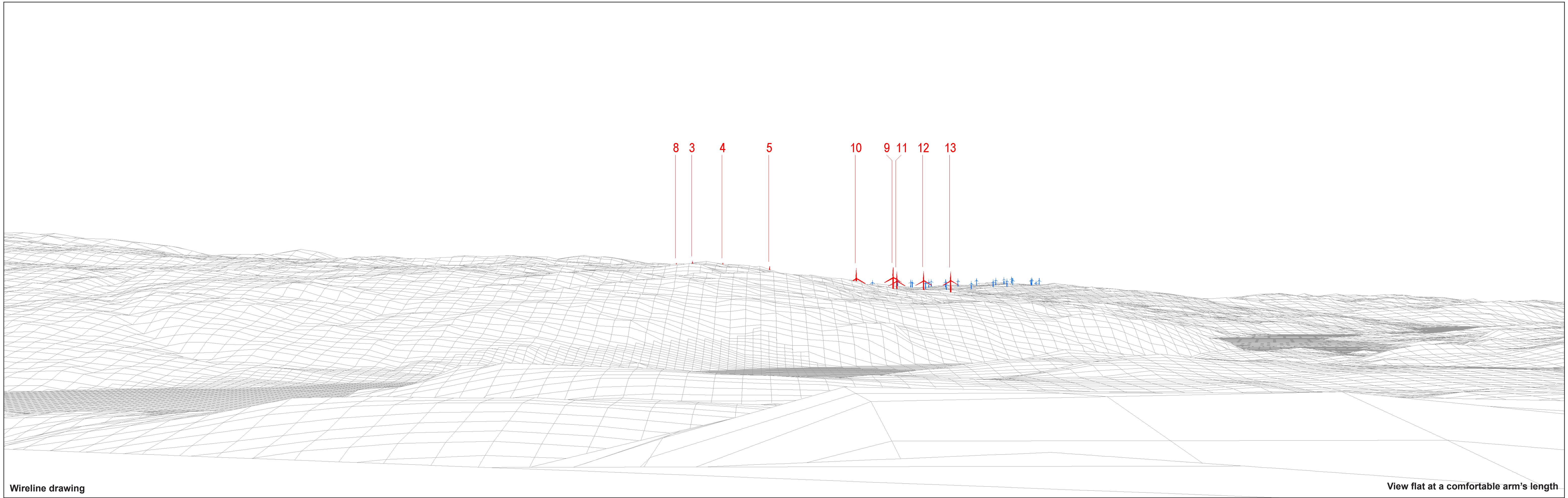
Horizontal field of view: 90° (cylindrical projection)
 Principal distance: 522 mm
 Paper size: 841 x 297 mm (half A1)
 Correct printed image size: 820 x 260 mm

Wind Farm Developments key
 (by status):

- Proposed scheme
- Operational
- Under construction
- Consented
- Application
- Scoping
- Appeal/PLI

An Carr Dubh Wind Farm
Figure: CH17a
CHVP17: Caisteal Suidhe Cheannaidh, dun 470m NW of Achnacraobh (SM4120)

© Crown copyright and database rights 2023 Ordnance Survey data. Licence number: 0100051673



Wireline drawing

View flat at a comfortable arm's length



OS reference:	202937E 724238N	Horizontal field of view:	53.5° (planar projection)
AOD:	212.91 m	Principal distance:	812.5 mm
Direction of view:	181°	Paper size:	841 x 297 mm (half A1)
Nearest turbine:	11.59 km	Correct printed image size:	820 x 260 mm

Wind Farm Developments key
(by status):

Proposed scheme
Operational

An Càrr Dubh Wind Farm
Figure: CH17b
CHVP17: Caisteal Suidhe Cheannaidh, dun 470m NW of Achnacraobh (SM4120)