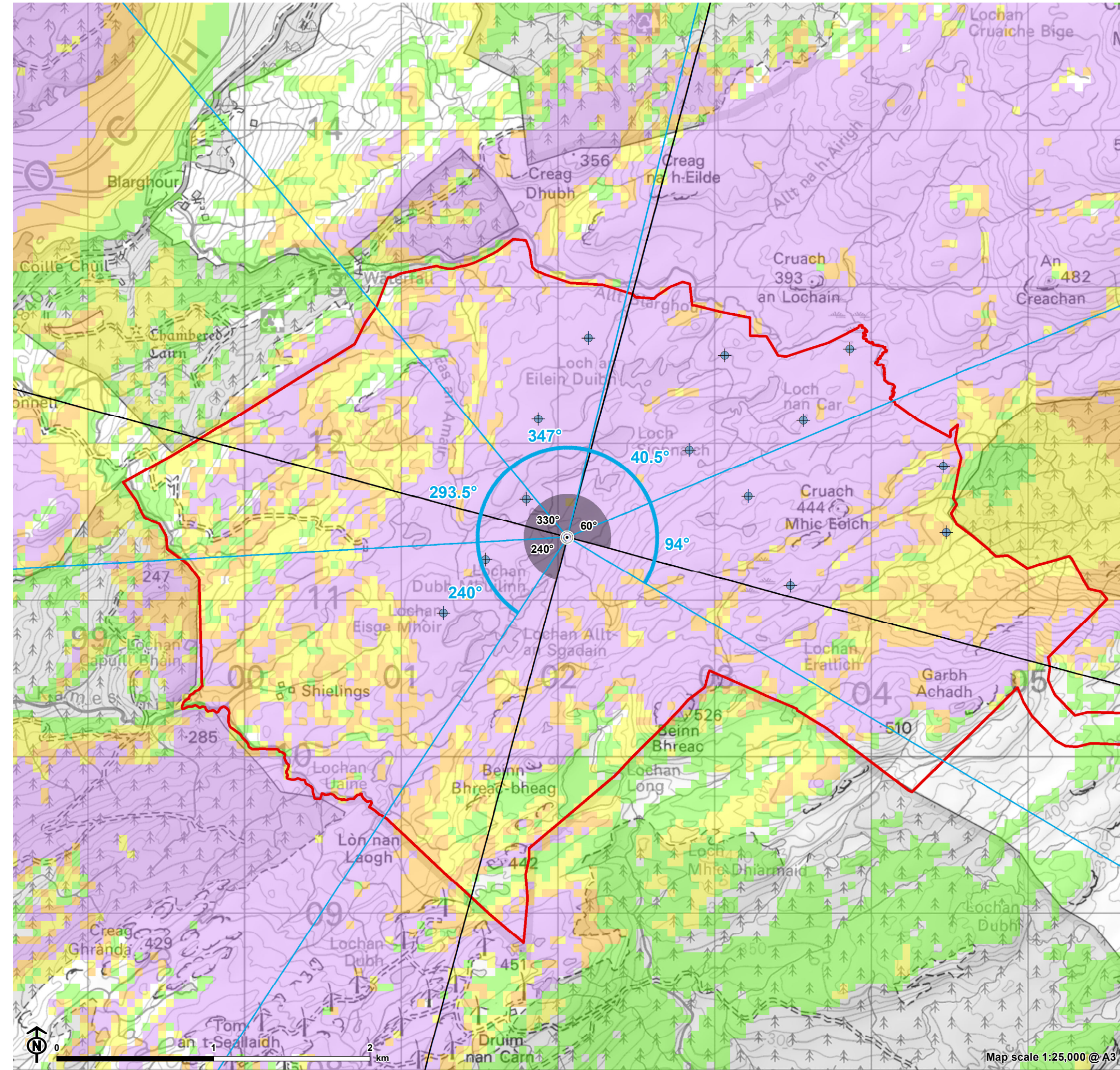
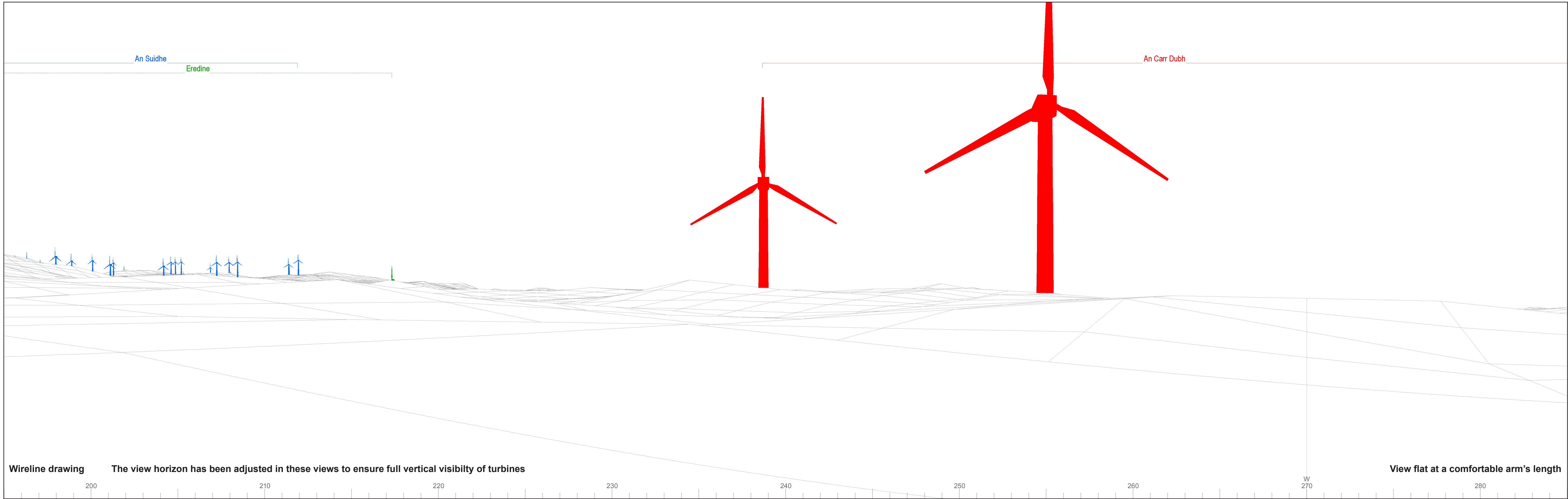


Figure 10.5.12:
Viewpoint CH12 - Lochan Dubh Mhuilín shielings (WK-3)



- Site boundary
 - + Turbine layout
 - 5km intervals from outermost turbines
 - 45km from outermost turbines
 - o Viewpoint
- Theoretical blade tip visibility (180m)**
- 1-3 turbines visible
 - 4-6 turbines visible
 - 7-9 turbines visible
 - 10-13 turbines visible
- ∠ 53.5° Field of View
- ∠ 90° Field of View

The ZTV is calculated to turbine tip height (180m) from a viewing height of 2m above ground level. The terrain model assumes bare ground and is derived from OS Terrain 50 height data (obtained from Ordnance Survey in July 2019). Earth curvature and atmospheric refraction have been taken into account. The ZTV was calculated using ArcMap 10.8.1 software.



© Crown copyright and database rights 2023 Ordnance Survey data. Licence number: 0100051673

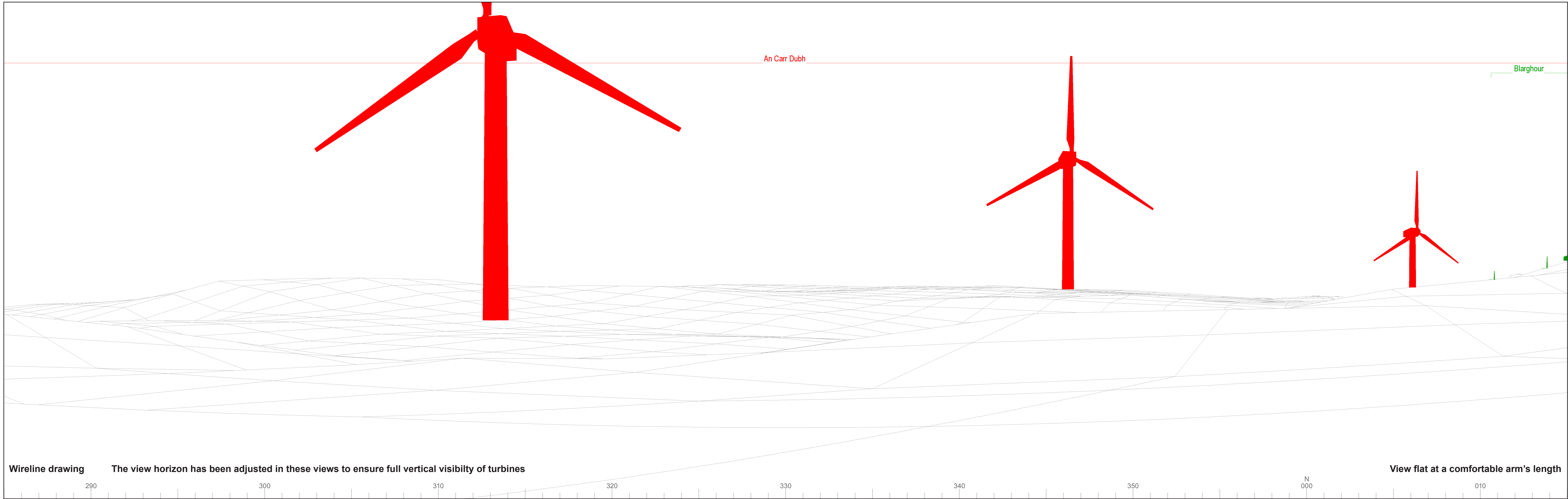


OS reference: 202060E 711400N
 AOD: 342.7 m
 Direction of view: 240°
 Nearest turbine: 0.36 km

Horizontal field of view: 90° (cylindrical projection)
 Principal distance: 522 mm
 Paper size: 841 x 297 mm (half A1)
 Correct printed image size: 820 x 260 mm

Wind Farm Developments key
 (by status):
 Proposed scheme
 Operational

An Càrr Dubh Wind Farm
Figure: CH12a
 CHVP12: Lochan Dubh Mhuilín shielings (WK-3)



Wireline drawing

The view horizon has been adjusted in these views to ensure full vertical visibility of turbines

View flat at a comfortable arm's length

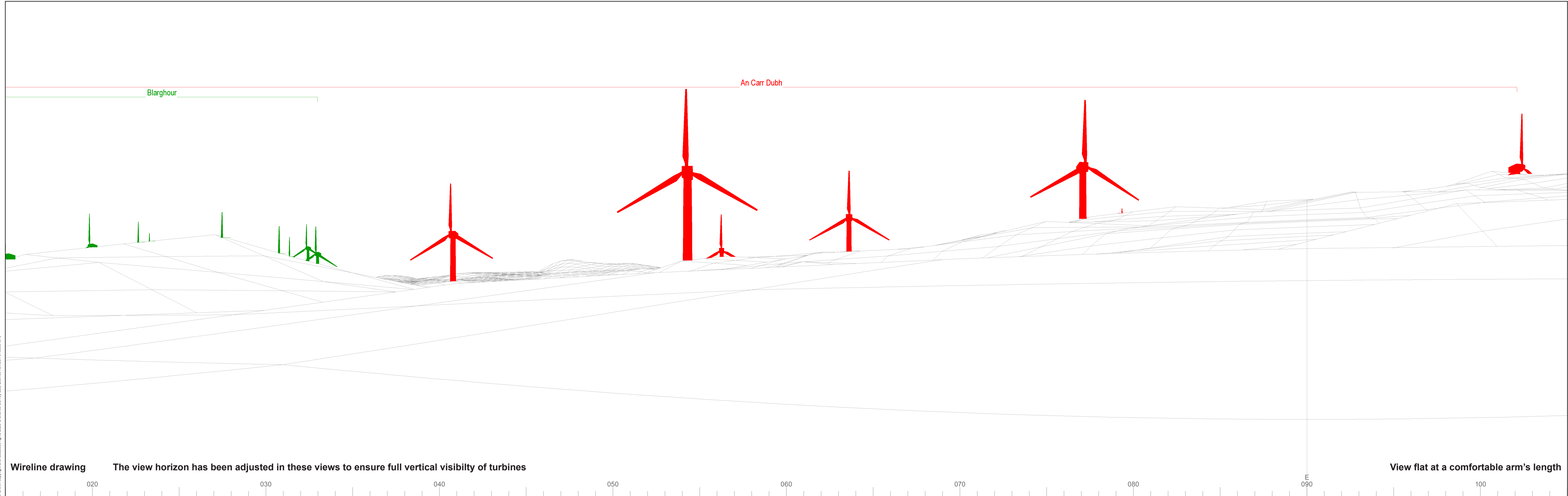


OS reference: 202060E 711400N
 AOD: 342.7 m
 Direction of view: 330°
 Nearest turbine: 0.36 km

Horizontal field of view: 90° (cylindrical projection)
 Principal distance: 522 mm
 Paper size: 841 x 297 mm (half A1)
 Correct printed image size: 820 x 260 mm

Wind Farm Developments key
 (by status):
 Proposed scheme
 Operational

© Crown copyright and database rights 2023 Ordnance Survey data. Licence number: 0100051673



Wireline drawing

The view horizon has been adjusted in these views to ensure full vertical visibility of turbines

View flat at a comfortable arm's length



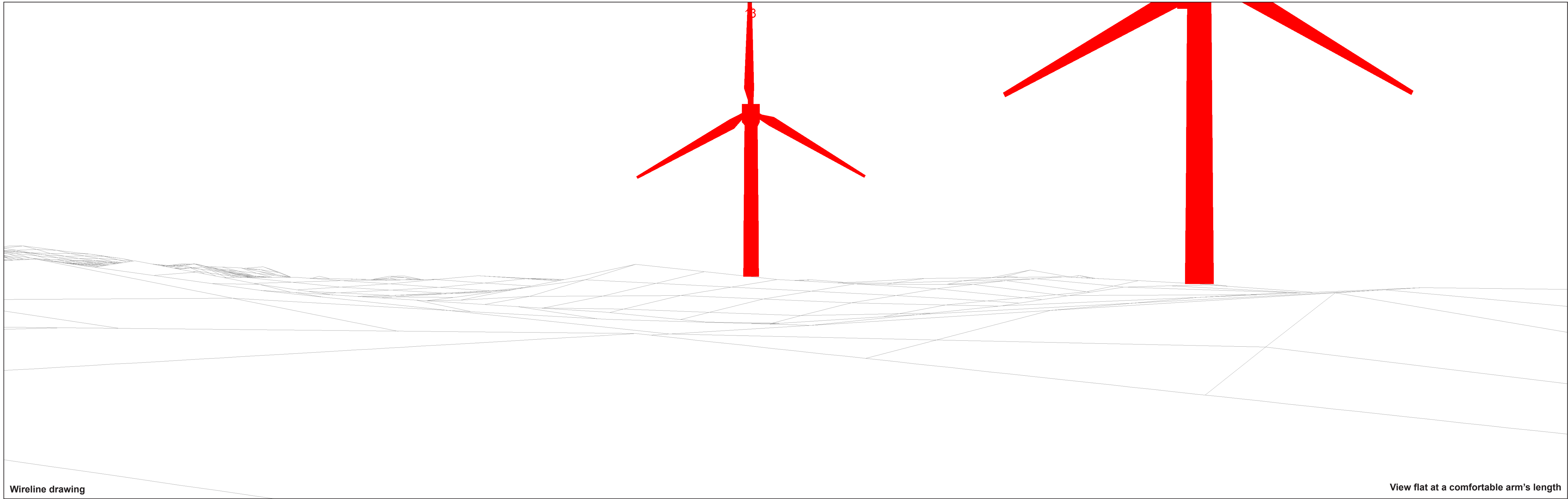
OS reference: 202060E 711400N
 AOD: 342.7 m
 Direction of view: 60°
 Nearest turbine: 0.36 km

Horizontal field of view: 90° (cylindrical projection)
 Principal distance: 522 mm
 Paper size: 841 x 297 mm (half A1)
 Correct printed image size: 820 x 260 mm

Wind Farm Developments key
 (by status):
 Proposed scheme
 Operational

An Càrr Dubh Wind Farm
Figure: CH12c
 CHVP12: Lochan Dubh Mhuilín shielings (WK-3)

© Crown copyright and database rights 2023 Ordnance Survey data. Licence number: 0100051673



Wireline drawing

View flat at a comfortable arm's length



OS reference:	202060E 711400N	Horizontal field of view:	53.5° (planar projection)
AOD:	342.7 m	Principal distance:	812.5 mm
Direction of view:	240°	Paper size:	841 x 297 mm (half A1)
Nearest turbine:	0.36 km	Correct printed image size:	820 x 260 mm

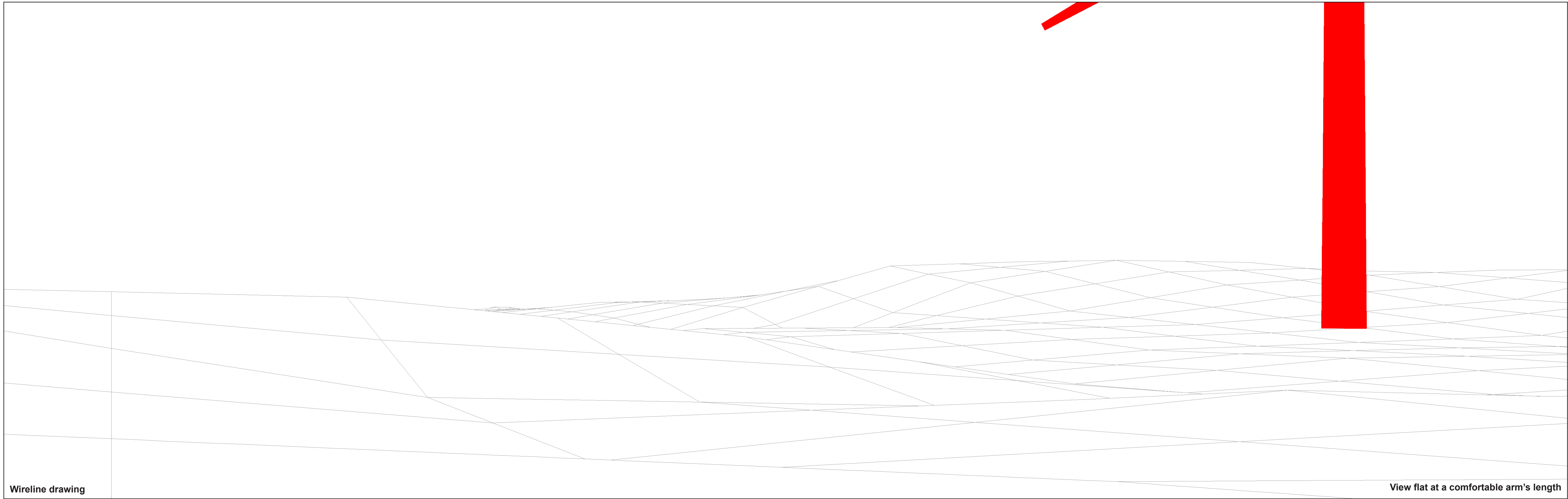
Wind Farm Developments key
(by status):

Proposed scheme
Operational

An Càrr Dubh Wind Farm
Figure: CH12d
CHVP12: Lochan Dubh Mhuilín shielings (WK-3)

© Crown copyright and database rights 2023 Ordnance Survey data. Licence number: 0100051673

© Crown copyright and database rights 2023 Ordnance Survey data. Licence number: 0100051673



Wireline drawing

View flat at a comfortable arm's length



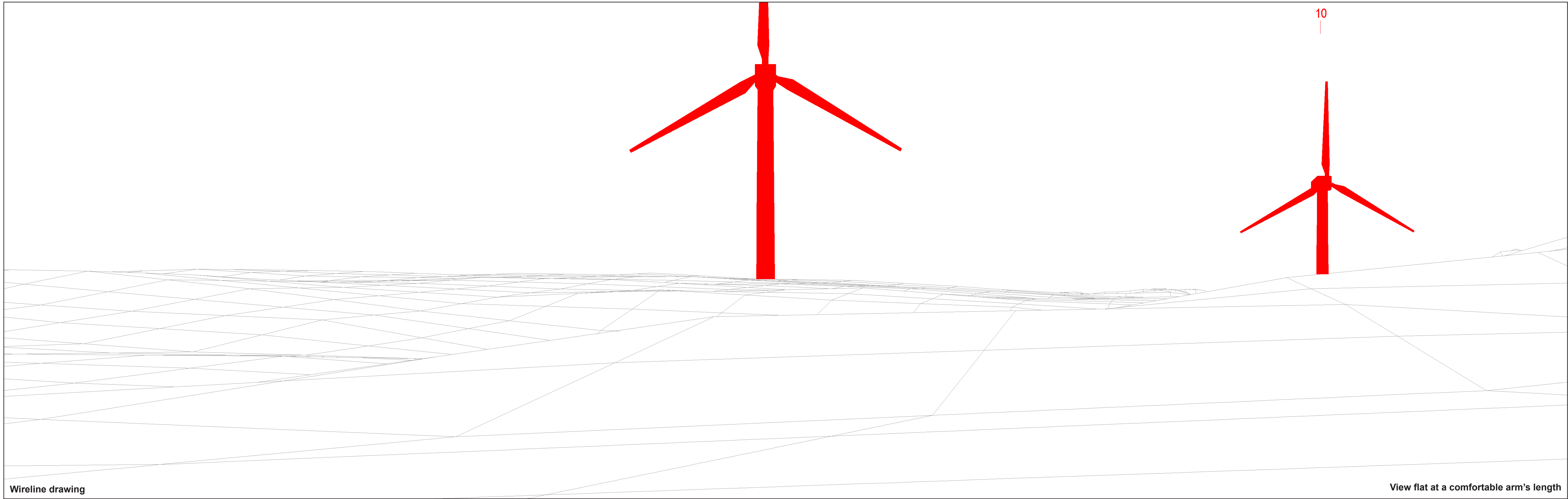
OS reference: 202060E 711400N
AOD: 342.7 m
Direction of view: 293.5°
Nearest turbine: 0.36 km

Horizontal field of view: 53.5° (planar projection)
Principal distance: 812.5 mm
Paper size: 841 x 297 mm (half A1)
Correct printed image size: 820 x 260 mm

Wind Farm Developments key
(by status):

Proposed scheme
Operational

An Càrr Dubh Wind Farm
Figure: CH12e
CHVP12: Lochan Dubh Mhuilín shielings (WK-3)



Wireline drawing

View flat at a comfortable arm's length

© Crown copyright and database rights 2023 Ordnance Survey data. Licence number: 0100051673

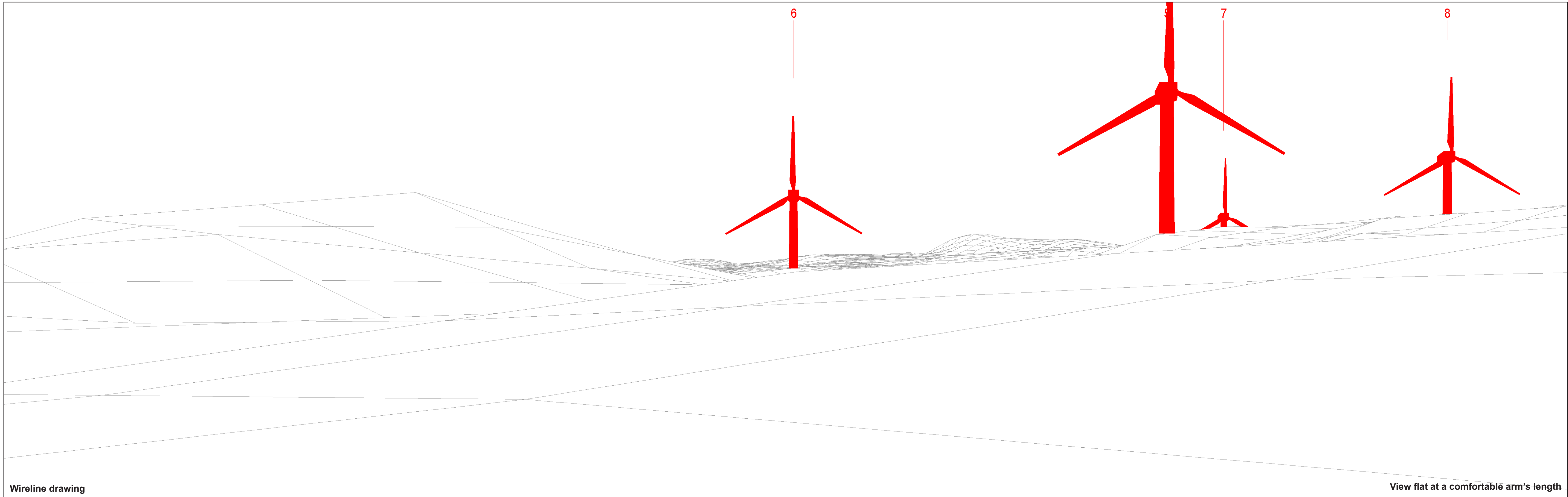


OS reference:	202060E 711400N	Horizontal field of view:	53.5° (planar projection)
AOD:	342.7 m	Principal distance:	812.5 mm
Direction of view:	347°	Paper size:	841 x 297 mm (half A1)
Nearest turbine:	0.36 km	Correct printed image size:	820 x 260 mm

Wind Farm Developments key
(by status):

Proposed scheme
Operational

An Càrr Dubh Wind Farm
Figure: CH12f
CHVP12: Lochan Dubh Mhuilín shielings (WK-3)



Wireline drawing

View flat at a comfortable arm's length

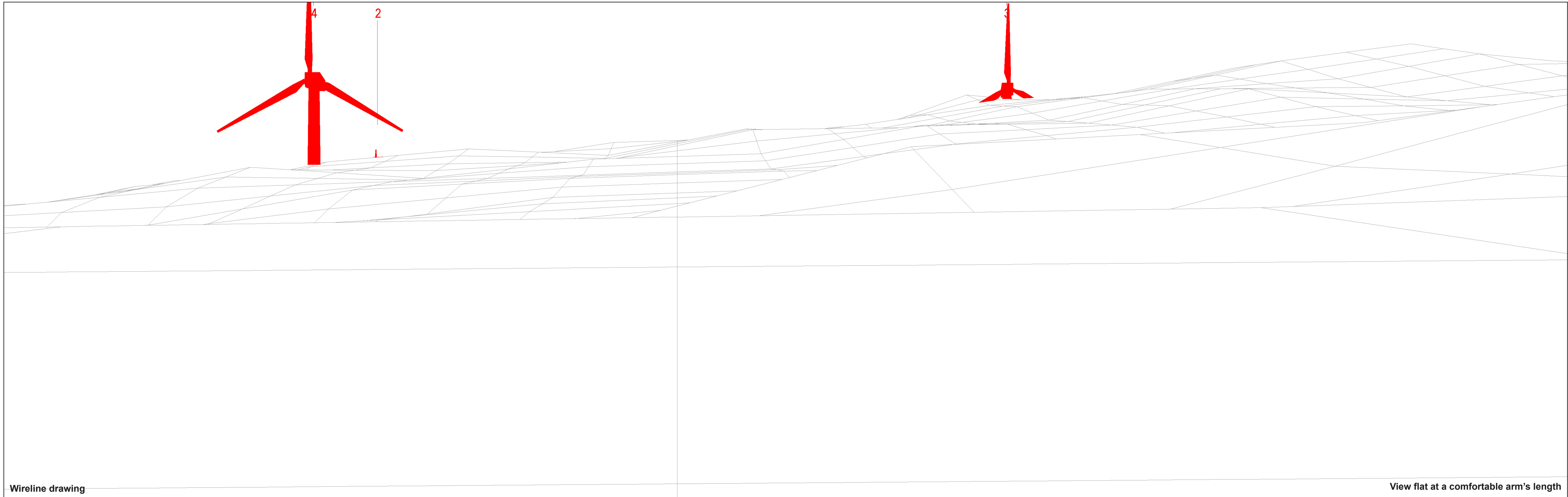


OS reference:	202060E 711400N	Horizontal field of view:	53.5° (planar projection)
AOD:	342.7 m	Principal distance:	812.5 mm
Direction of view:	40.5°	Paper size:	841 x 297 mm (half A1)
Nearest turbine:	0.36 km	Correct printed image size:	820 x 260 mm

Wind Farm Developments key
(by status):

Proposed scheme
Operational

© Crown copyright and database rights 2023 Ordnance Survey data. Licence number: 0100051673



Wireline drawing

View flat at a comfortable arm's length

© Crown copyright and database rights 2023 Ordnance Survey data. Licence number: 0100051673



OS reference:	202060E 711400N	Horizontal field of view:	53.5° (planar projection)
AOD:	342.7 m	Principal distance:	812.5 mm
Direction of view:	94°	Paper size:	841 x 297 mm (half A1)
Nearest turbine:	0.36 km	Correct printed image size:	820 x 260 mm

Wind Farm Developments key
(by status):

Proposed scheme
Operational

An Càrr Dubh Wind Farm
Figure: CH12h
CHVP12: Lochan Dubh Mhuilín shielings (WK-3)