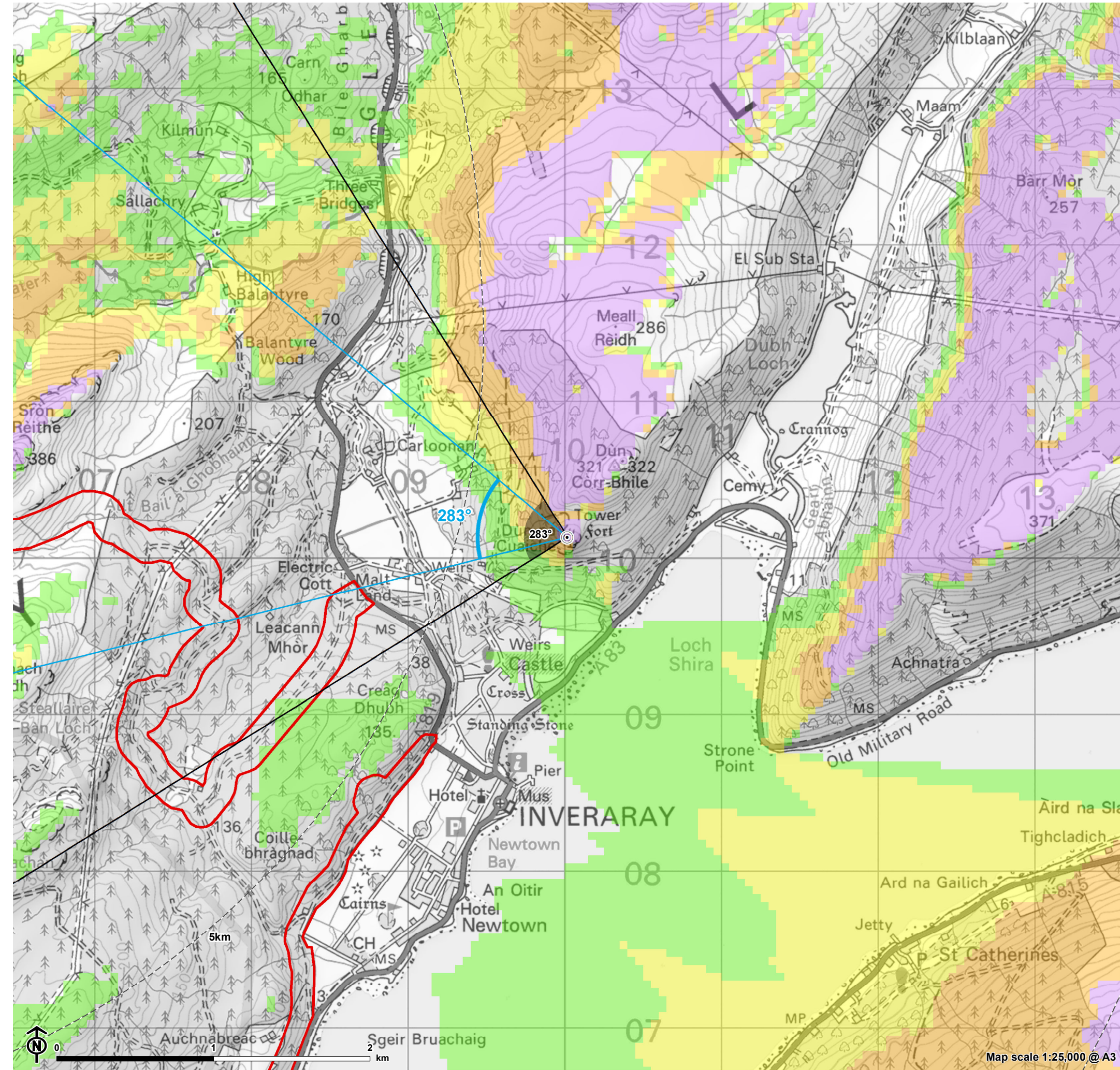
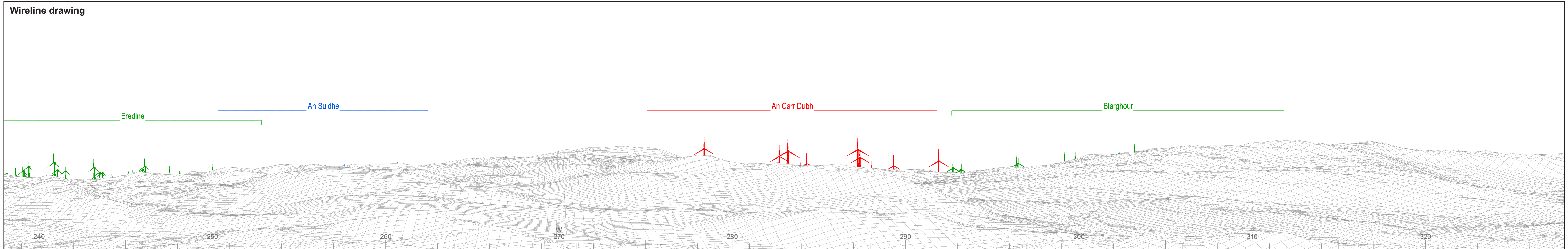


Figure 10.5.10:
Viewpoint CH10 - Tower, Dun Na Cuaiche, Inverary Castle Estate (LB11543)



- Site boundary
 - Turbine layout
 - 5km intervals from outermost turbines
 - 45km from outermost turbines
 - Viewpoint
- Theoretical blade tip visibility (180m)**
- 1-3 turbines visible
 - 4-6 turbines visible
 - 7-9 turbines visible
 - 10-13 turbines visible
- 53.5° Field of View
 - 90° Field of View

The ZTV is calculated to turbine tip height (180m) from a viewing height of 2m above ground level. The terrain model assumes bare ground and is derived from OS Terrain 50 height data (obtained from Ordnance Survey in July 2019). Earth curvature and atmospheric refraction have been taken into account. The ZTV was calculated using ArcMap 10.8.1 software.



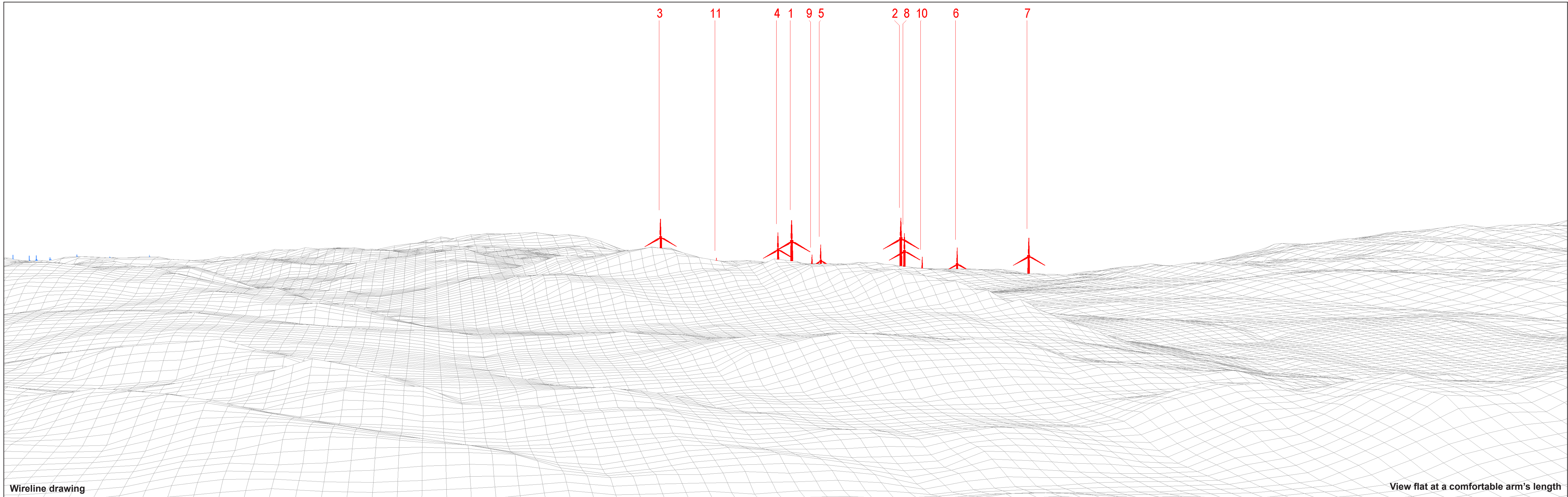
OS reference: 210016E 710131N
 AOD: 245.18 m
 Direction of view: 283°
 Nearest turbine: 5.69 km

Horizontal field of view: 90° (cylindrical projection)
 Principal distance: 522 mm
 Paper size: 841 x 297 mm (half A1)
 Correct printed image size: 820 x 260 mm

Wind Farm Developments key
 (by status):

- Proposed scheme
- Operational
- Under construction
- Consented
- Application
- Scoping
- Appeal/PLI

An Càrr Dubh Wind Farm
Figure: CH10a
CHVP10: Tower, Dun Na Cuaiche, Inverary Castle Estate (LB11543)



Wireline drawing

View flat at a comfortable arm's length



OS reference: 210016E 710131N
 AOD: 245.18 m
 Direction of view: 283°
 Nearest turbine: 5.69 km

Horizontal field of view: 53.5° (planar projection)
 Principal distance: 812.5 mm
 Paper size: 841 x 297 mm (half A1)
 Correct printed image size: 820 x 260 mm

Wind Farm Developments key
 (by status):

Proposed scheme
 Operational

An Càrr Dubh Wind Farm
 Figure: CH10b
 CHVP10: Tower, Dun Na Cuaiche, Inverary Castle Estate (LB11543)

© Crown copyright and database rights 2023 Ordnance Survey data. Licence number: 0100051673