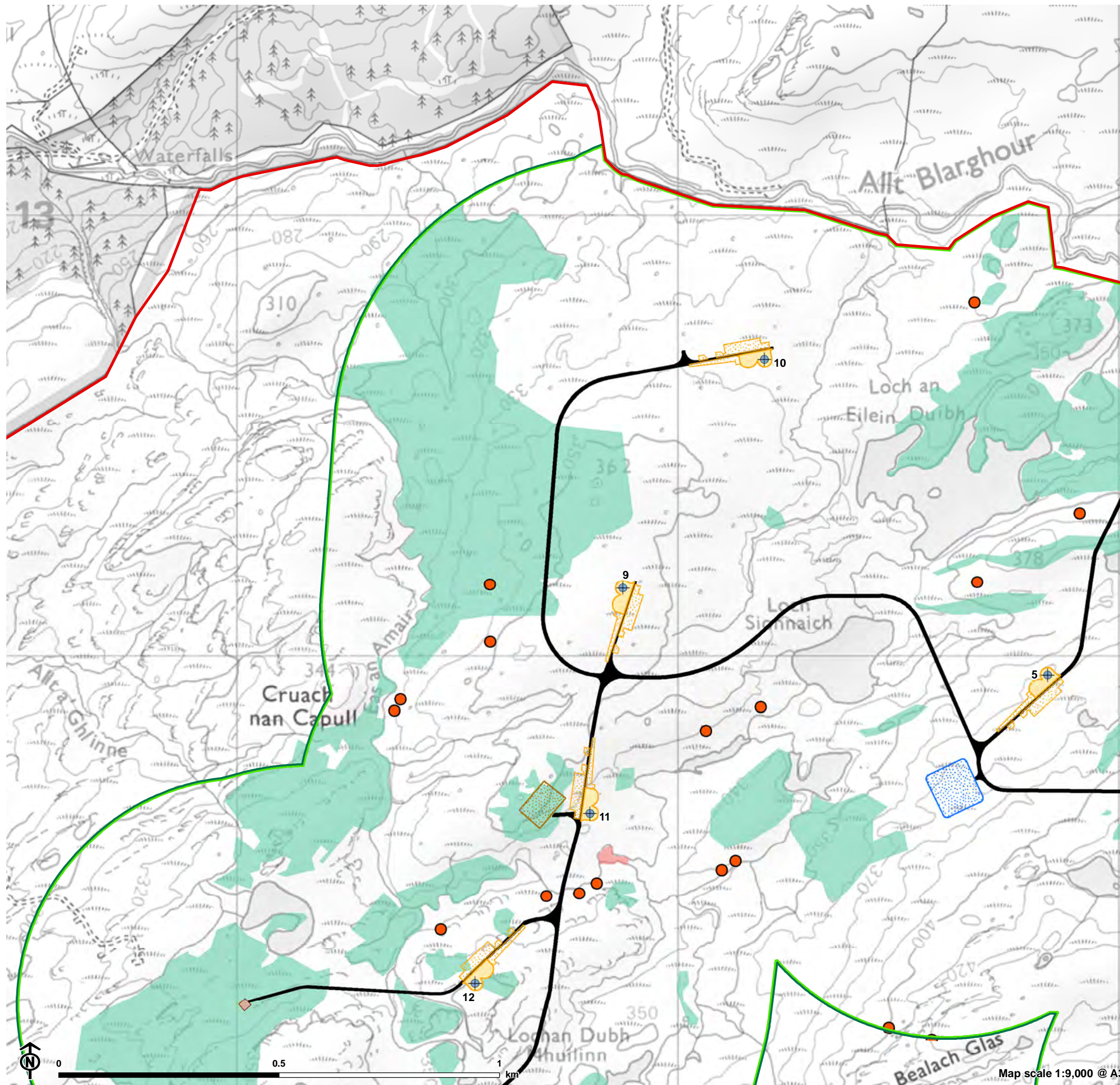


Figure 8.5: Areas of Guidance-Stated Potential Groundwater Dependency



- Site boundary
 - Ecology Survey Area (ESA)
 - Turbine (final layout)
 - Borrow pit
 - Permanent compound including substation and BESS
 - Temporary hardstanding
 - Permanent hardstanding
 - Permanent met mast
 - Proposed track
 - Potential GWDEs (high potential)
- GWDE potential**
- High
 - Moderate

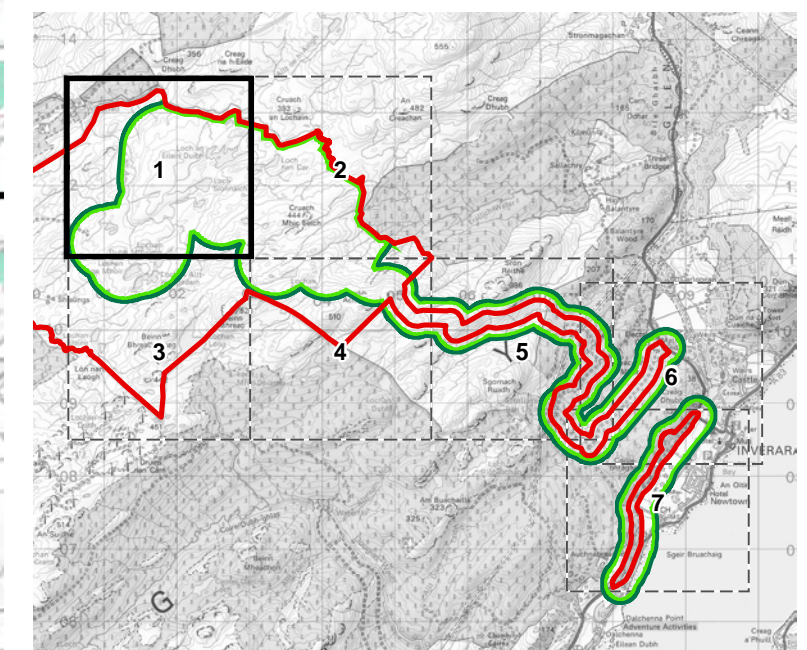
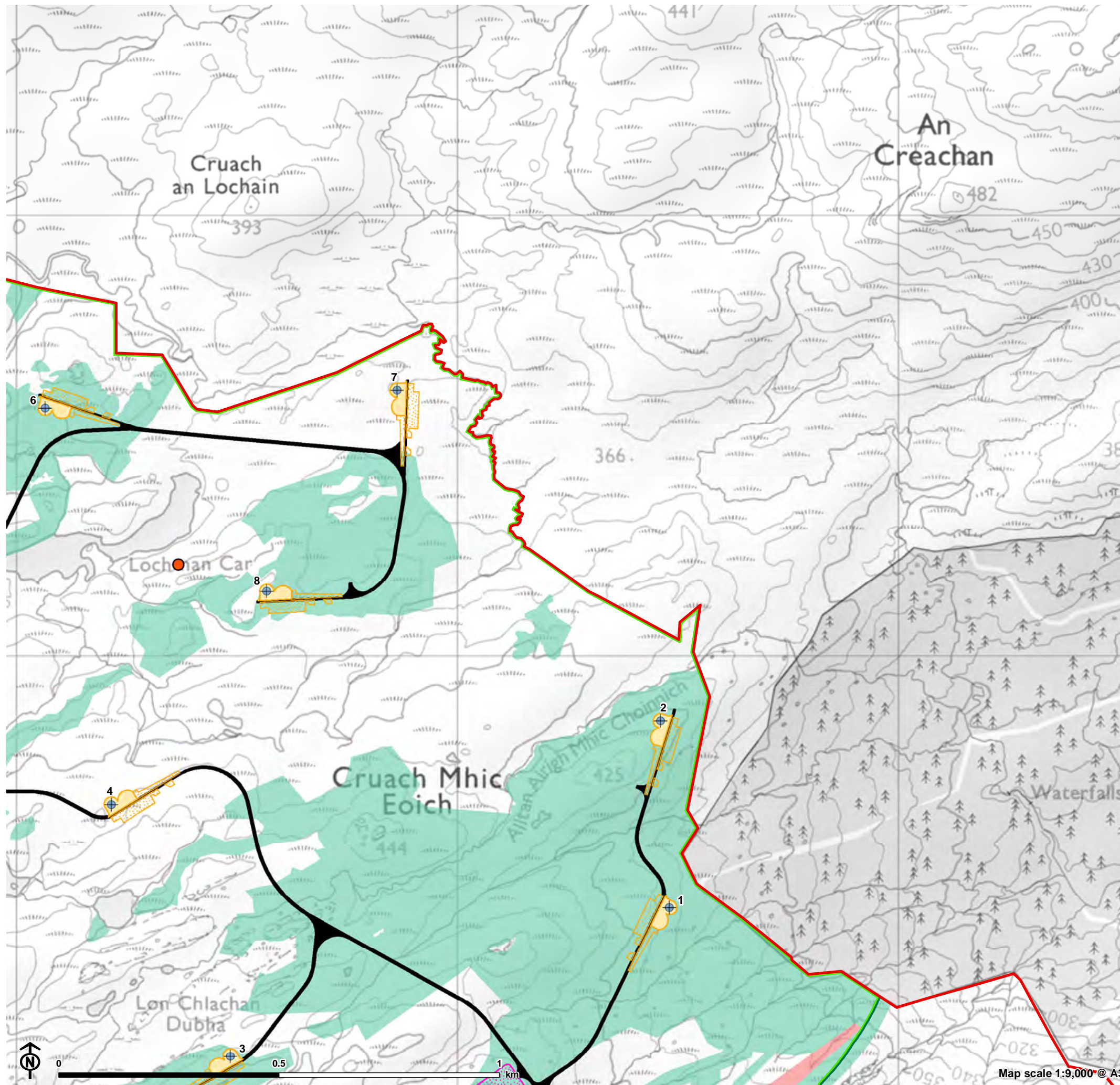


Figure 8.5: Areas of Guidance-Stated Potential Groundwater Dependency



- Site boundary
 - Ecology Survey Area (ESA)
 - Turbine (final layout)
 - Temporary construction compound
 - Temporary hardstanding
 - Permanent hardstanding
 - Proposed track
 - Potential GWDEs (high potential)
- GWDE potential**
- High
 - Moderate

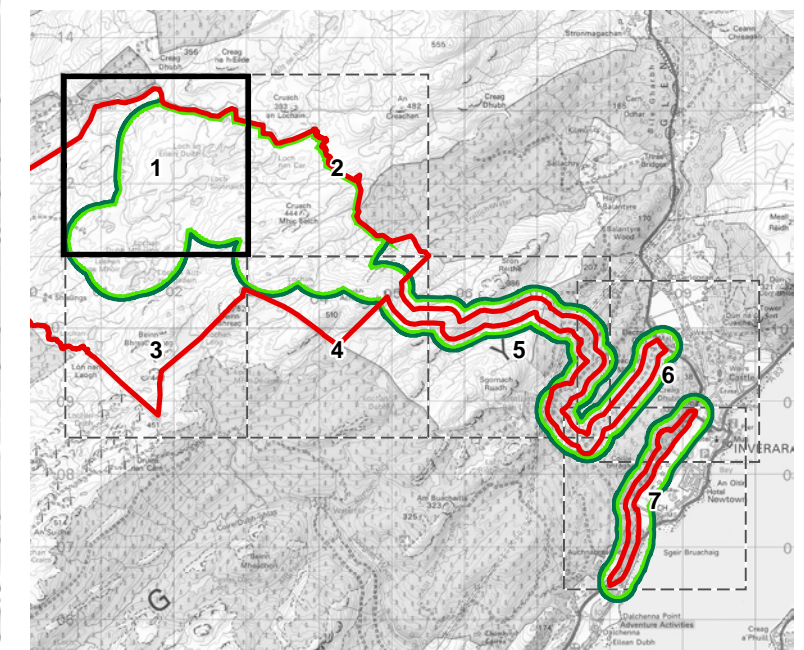
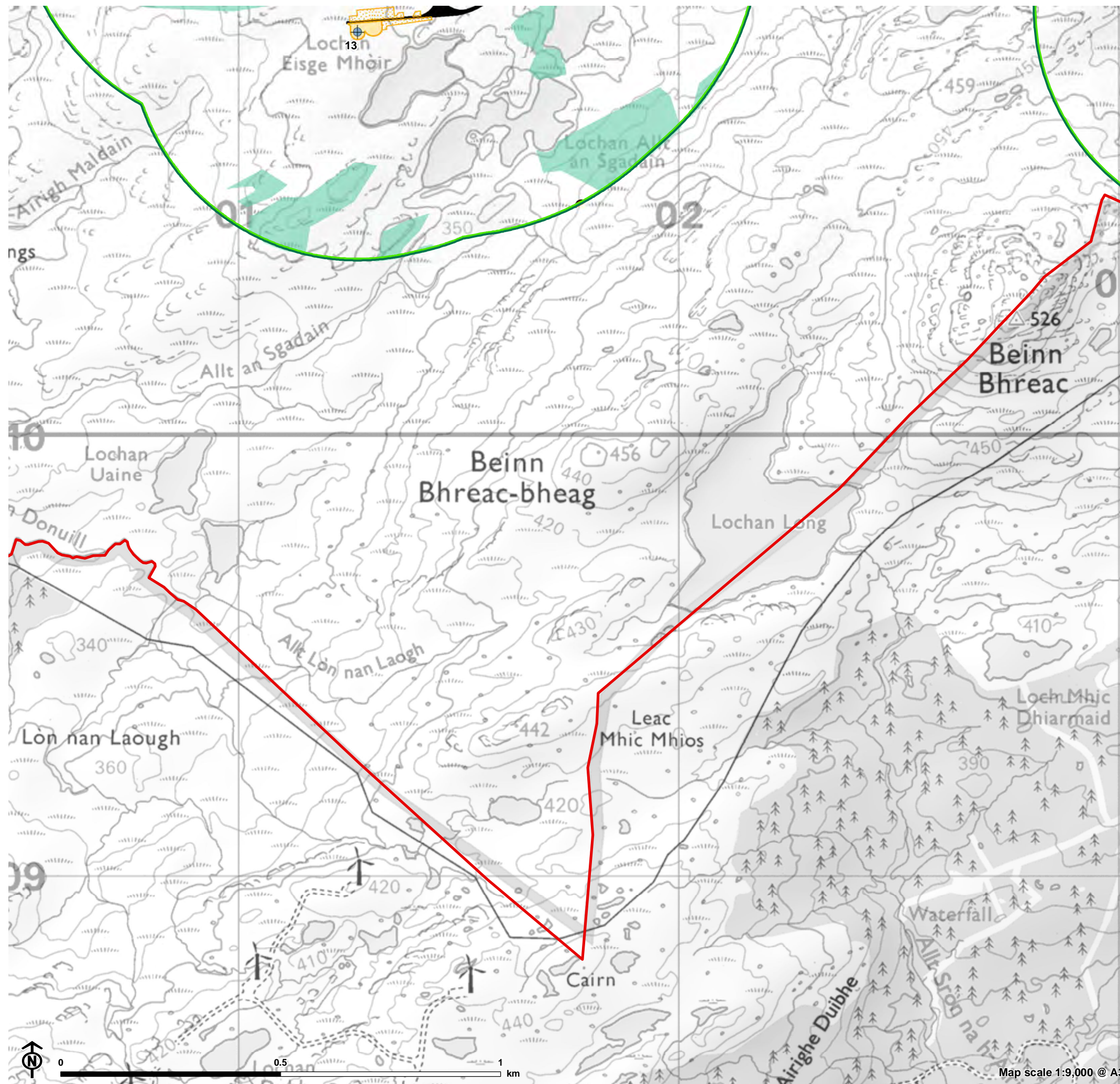


Figure 8.5: Areas of Guidance-Stated Potential Groundwater Dependency



- Site boundary
- Ecology Survey Area (ESA)
- Turbine (final layout)
- Temporary hardstanding
- Permanent hardstanding
- Proposed track
- Potential GWDEs (high potential)
- GWDE potential**
- Moderate

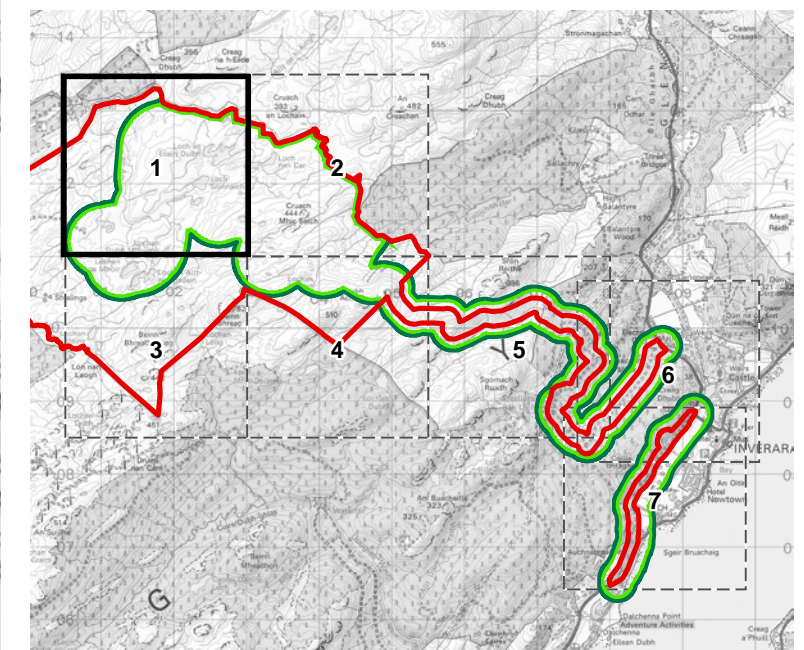
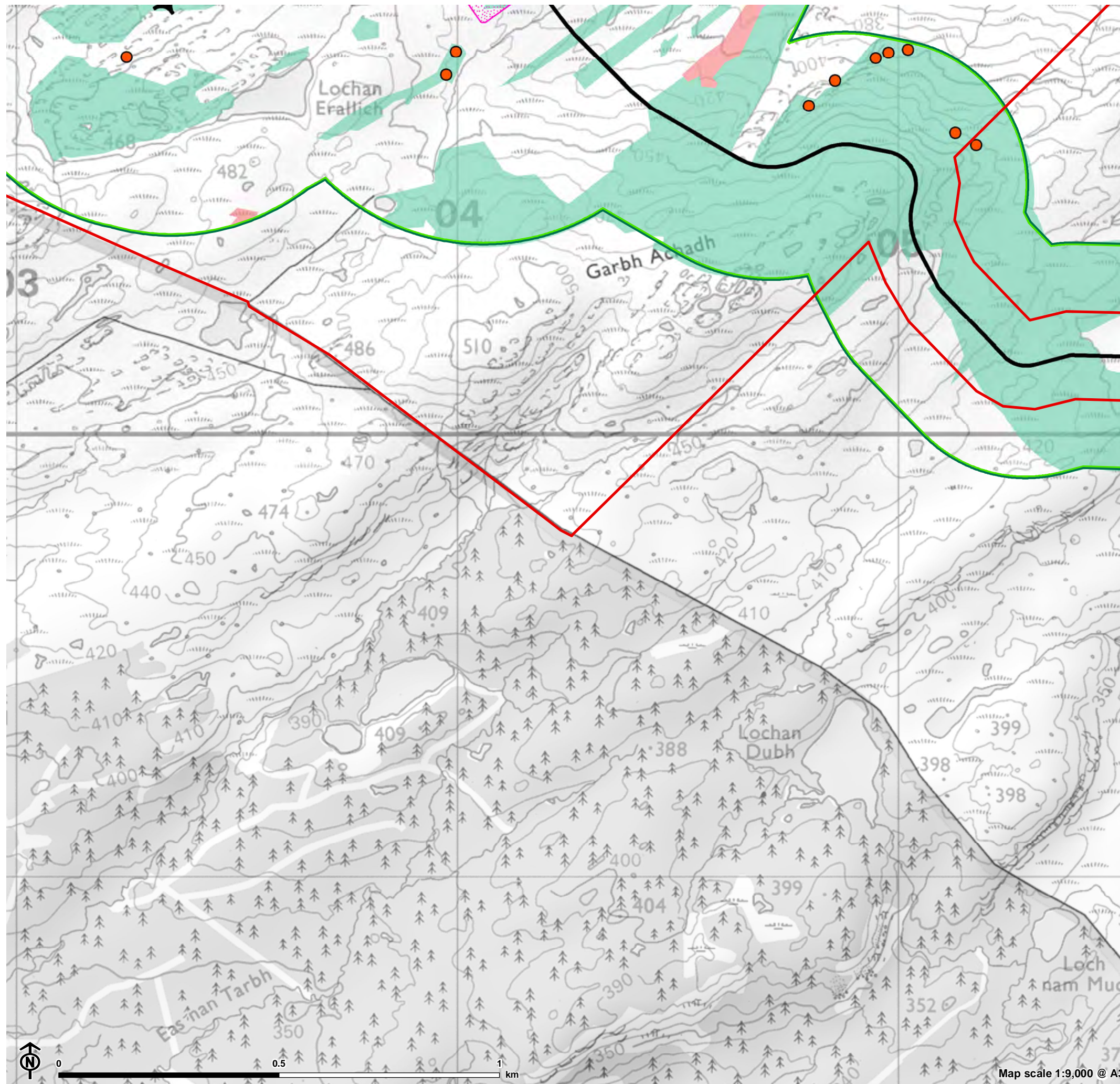


Figure 8.5: Areas of Guidance-Stated Potential Groundwater Dependency



- Site boundary
 - Ecology Survey Area (ESA)
 - Temporary construction compound
 - Proposed track
 - Potential GWDEs (high potential)
- GWDE potential**
- High
 - Moderate

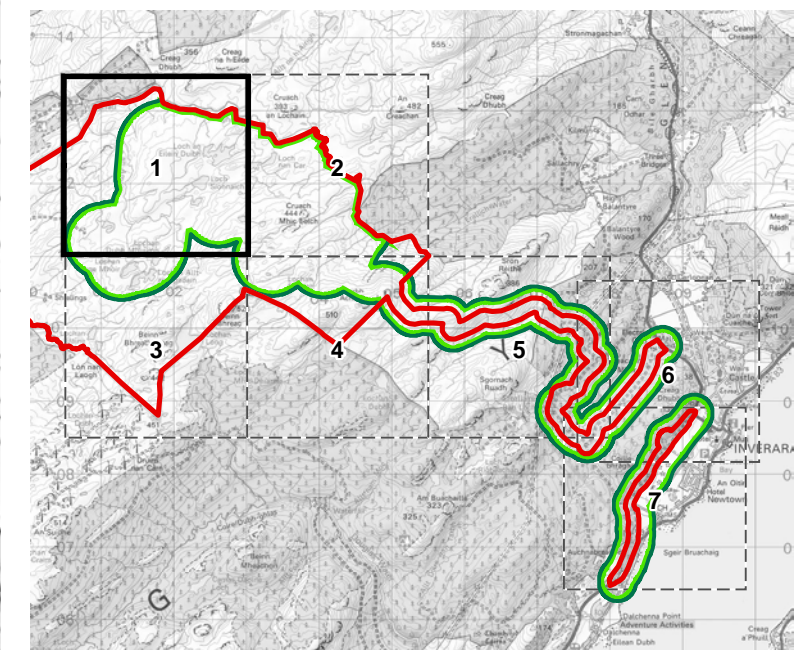
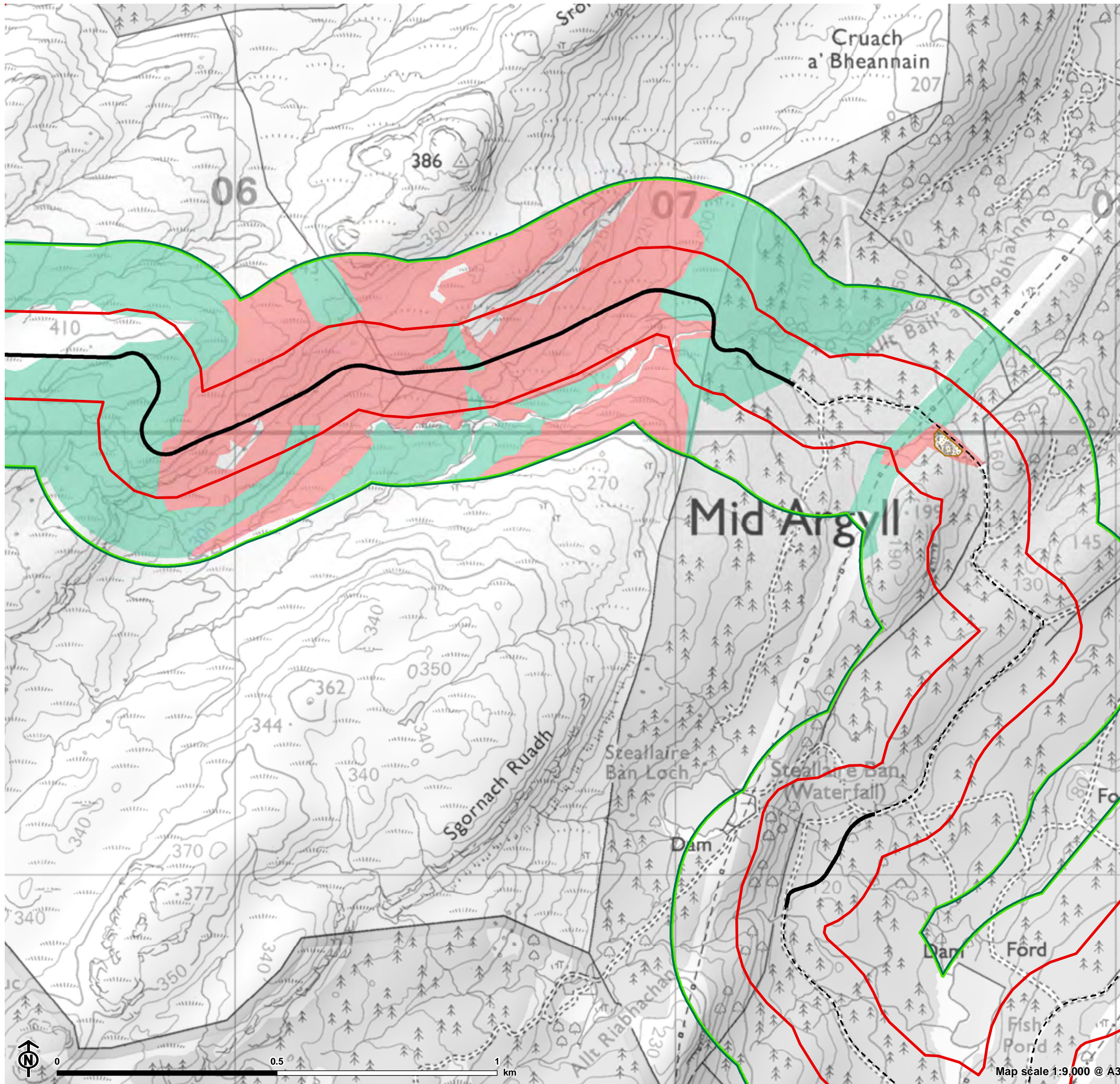


Figure 8.5: Areas of Guidance-Stated Potential Groundwater Dependency



- Site boundary
- Ecology Survey Area (ESA)
- Borrow pit
- Existing access track
- Proposed track
- GWDE potential**
- High
- Moderate

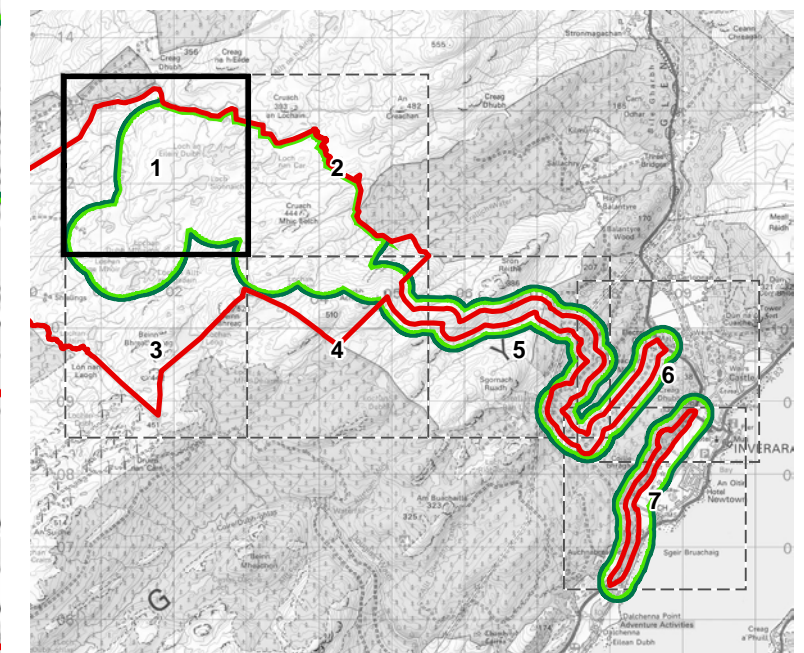
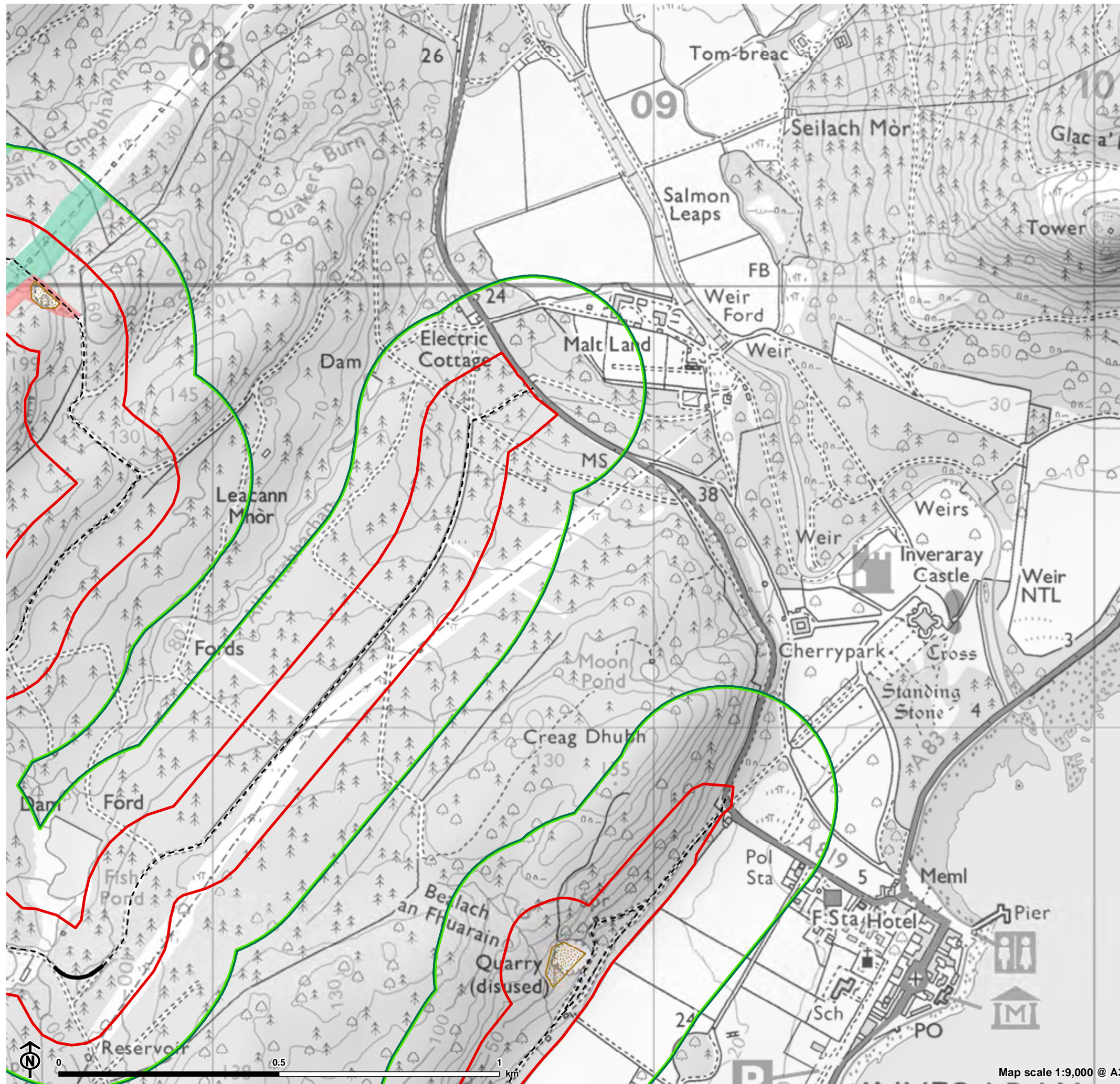


Figure 8.5: Areas of Guidance-Stated Potential Groundwater Dependency



- Site boundary
- Ecology Survey Area (ESA)
- Borrow pit
- Existing access track
- Proposed track
- GWDE potential**
- High
- Moderate

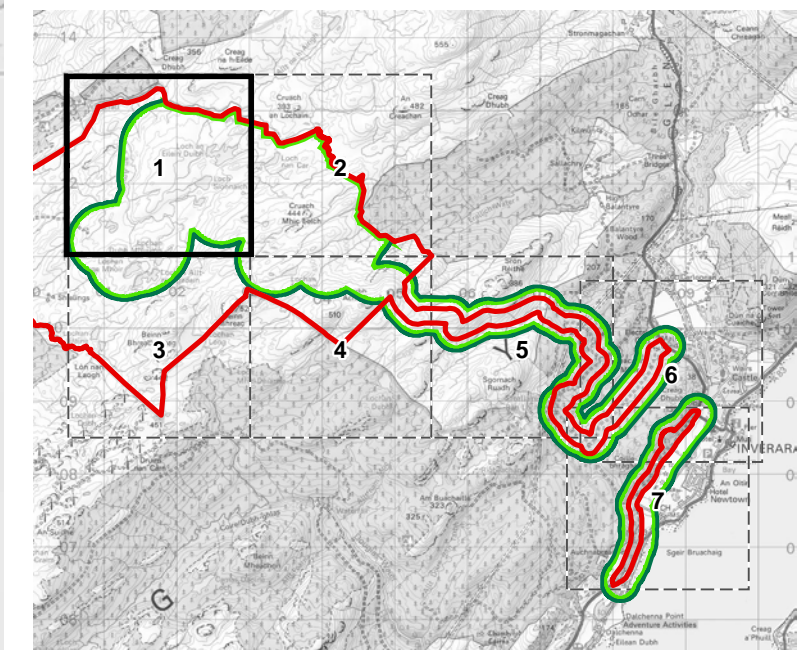
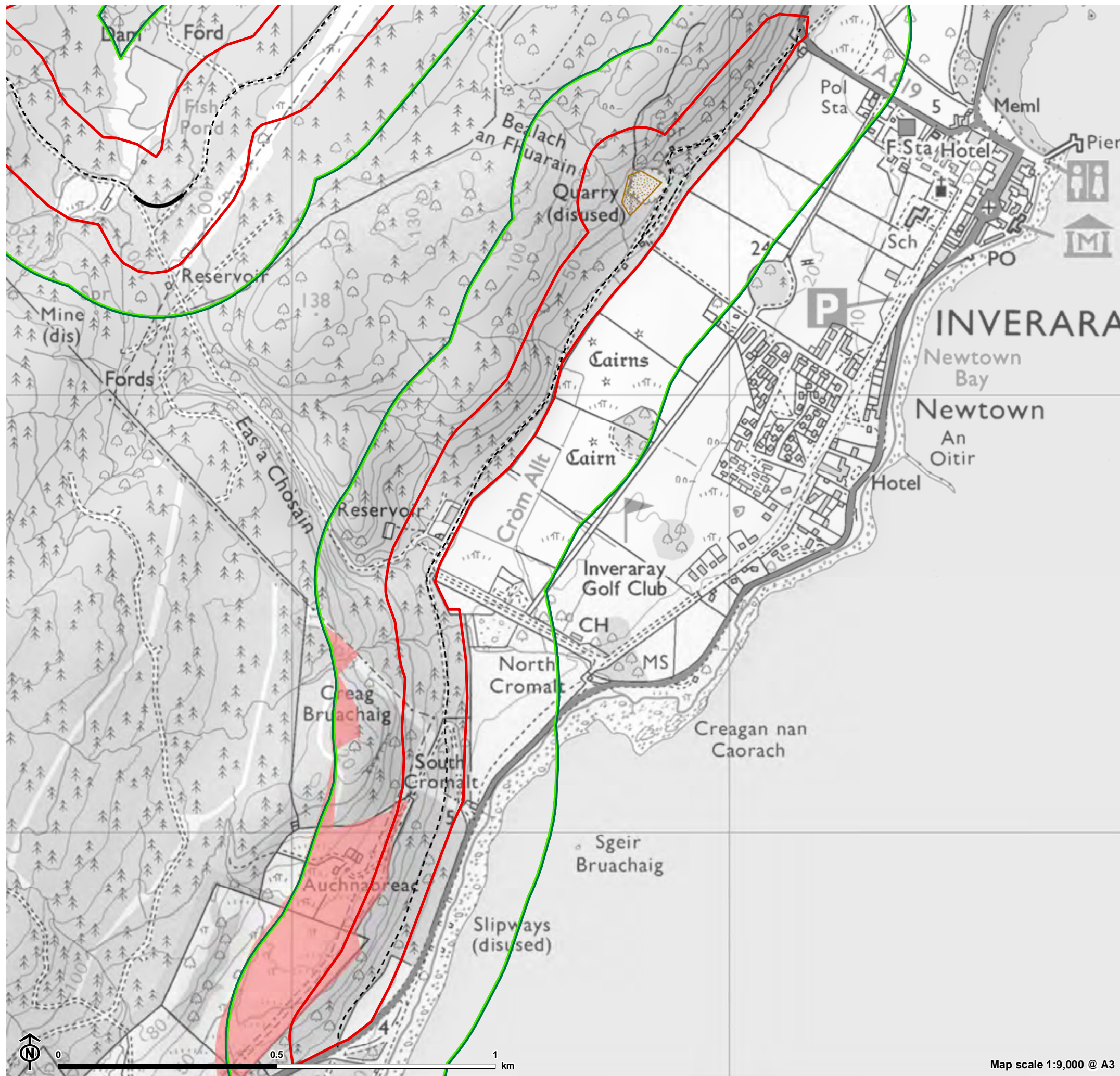


Figure 8.5: Areas of Guidance-Stated Potential Groundwater Dependency



- Site boundary
- Ecology Survey Area (ESA)
- Borrow pit
- Existing access track
- Proposed track
- GWDE potential**
- High

