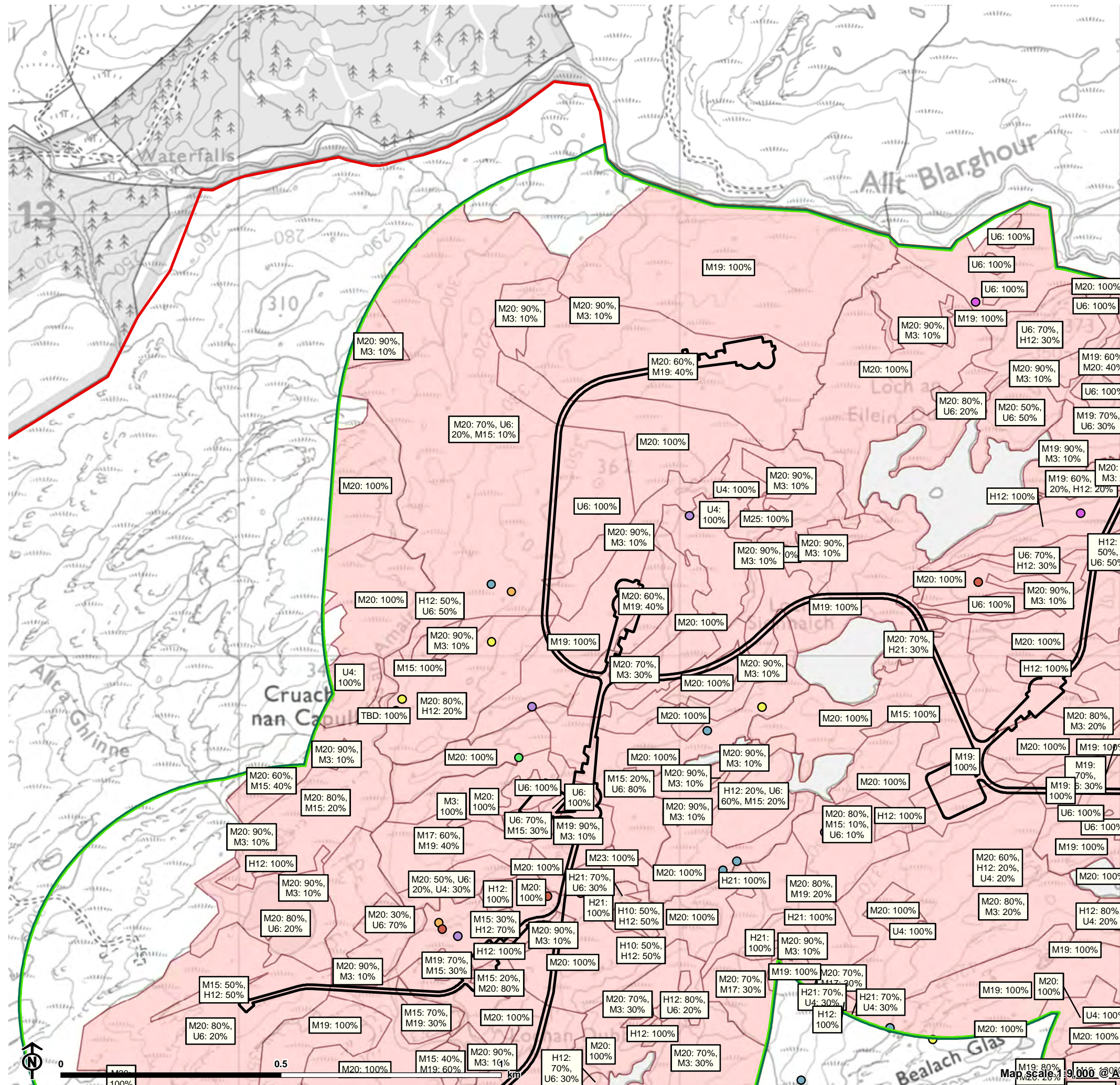


Figure 8.4.1: National Vegetation Classification (NVC) Survey Results



- ▭ Site boundary
- Infrastructure footprint
- ▭ Ecology Survey Area (ESA)
- National Vegetation Classification (NVC)

NVC Target Notes

- M10 Carex dioica-Pinguicula vulgaris mire
- M11 Carex demissa-Saxifraga aizoides mire
- M32 Philonotis fontana-Saxifraga stellaris spring
- M6 Carex echinata-Sphagnum recurvum/auriculatum mire
- M2 Sphagnum cuspidatum/recurvum bog pool community
- M3 Eriophorum angustifolium bog pool community
- M4 Carex rostrata-Sphagnum recurvum mire

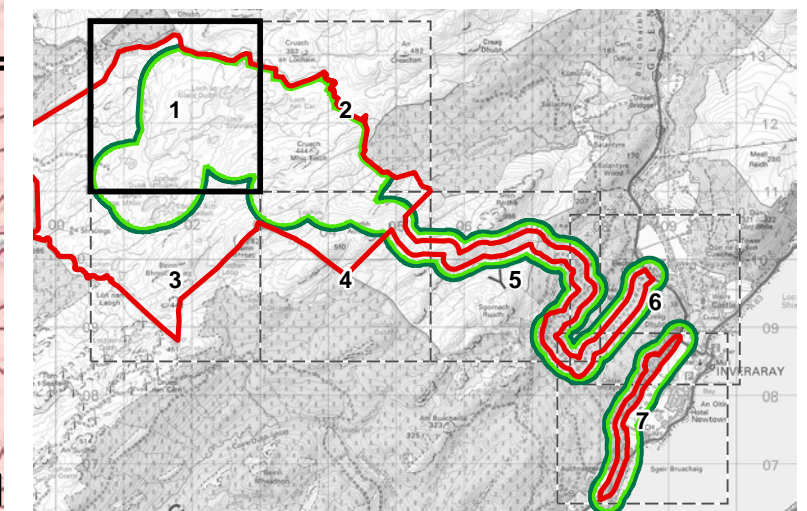
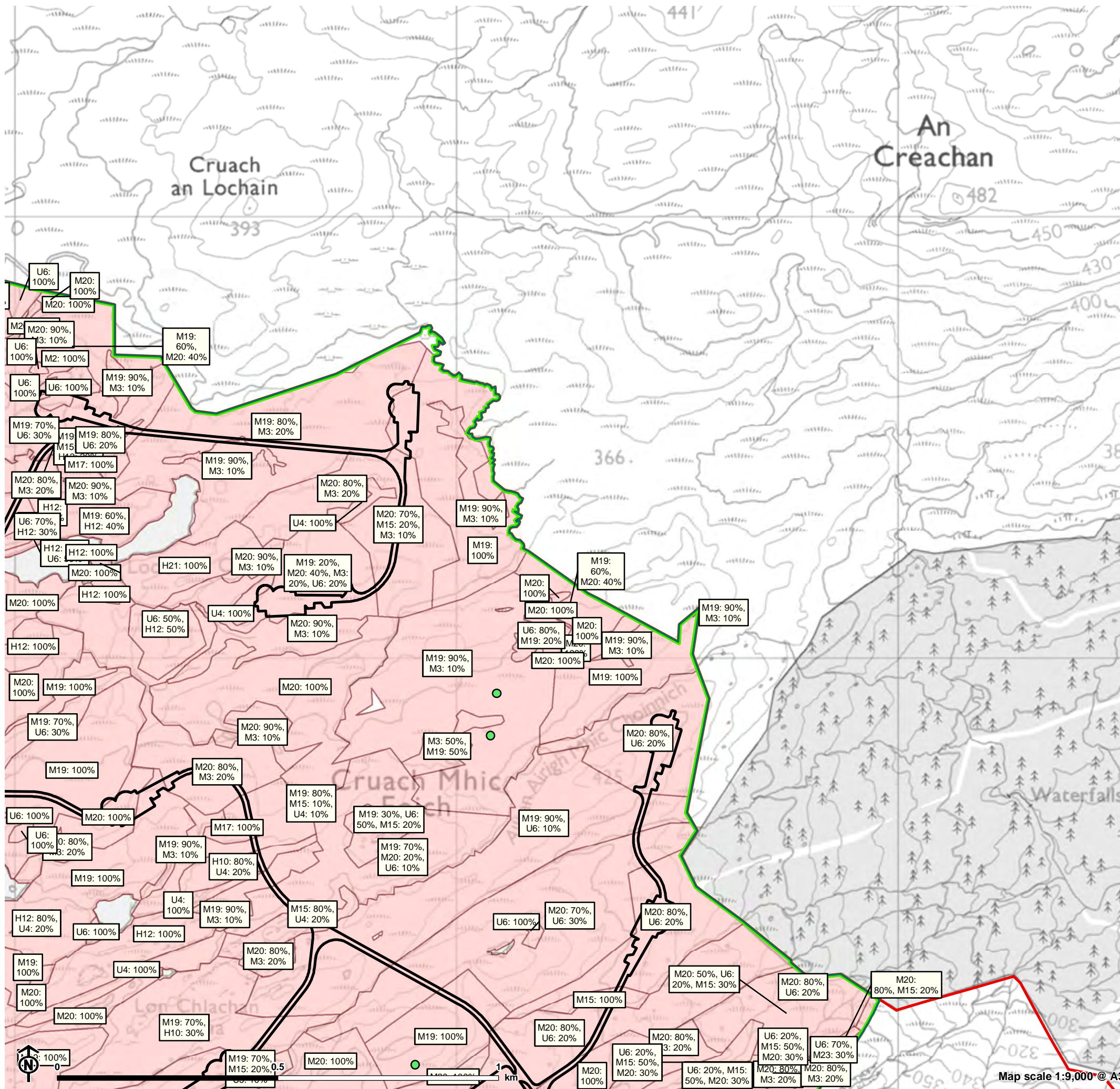


Figure 8.4.2: National Vegetation Classification (NVC) Survey Results



- Site boundary
- Infrastructure footprint
- Ecology Survey Area (ESA)
- National Vegetation Classification (NVC)

NVC Target Notes

- M32 *Philonotis fontana*-*Saxifraga stellaris* spring
- M2 *Sphagnum cuspidatum/recurvum* bog pool community

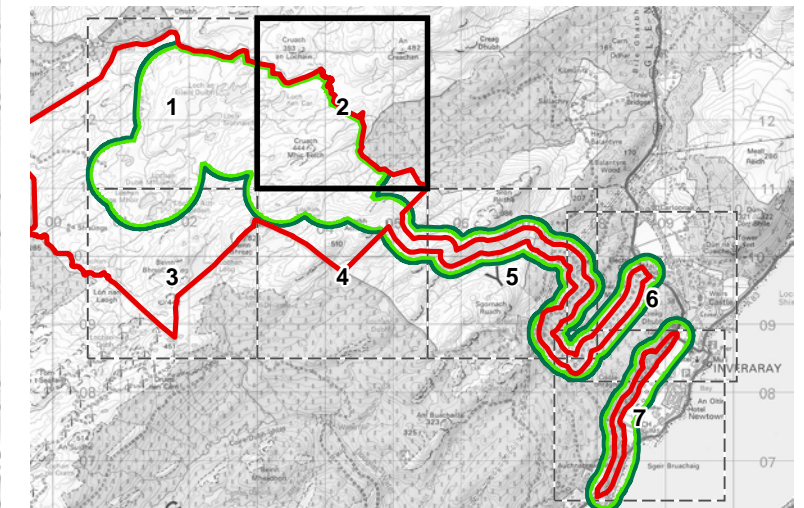
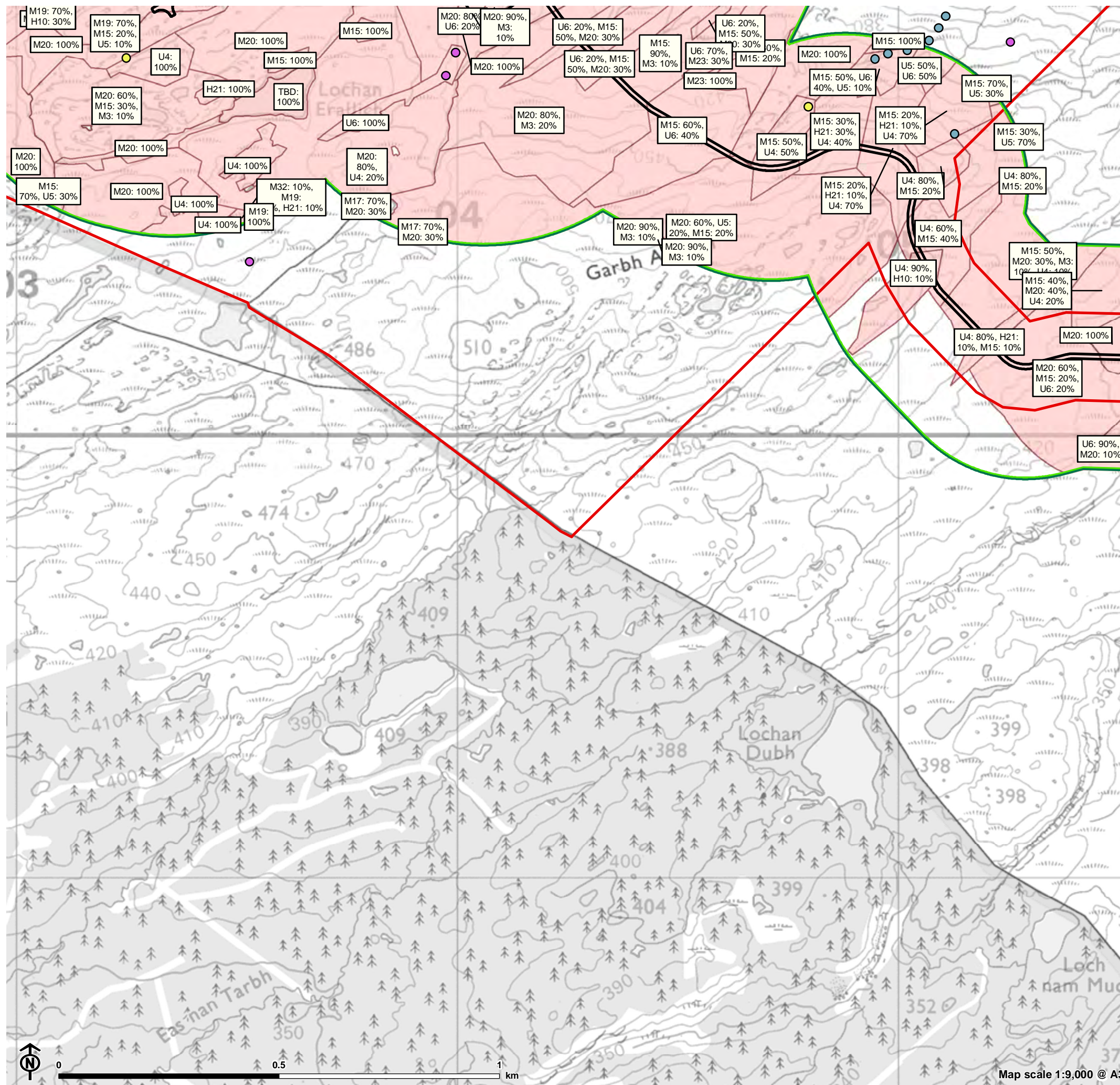


Figure 8.4.4: National Vegetation Classification (NVC) Survey Results



- Site boundary
 - Infrastructure footprint
 - Ecology Survey Area (ESA)
 - National Vegetation Classification (NVC)
- NVC Target Notes**
- M10 *Carex dioica*-*Pinguicula vulgaris* mire
 - M11 *Carex demissa*-*Saxifraga aizoides* mire
 - M32 *Philonotis fontana*-*Saxifraga stellaris* spring

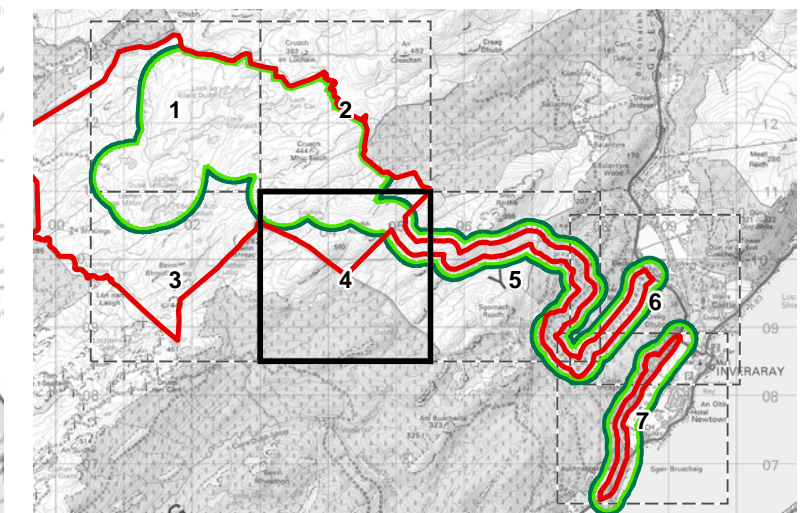
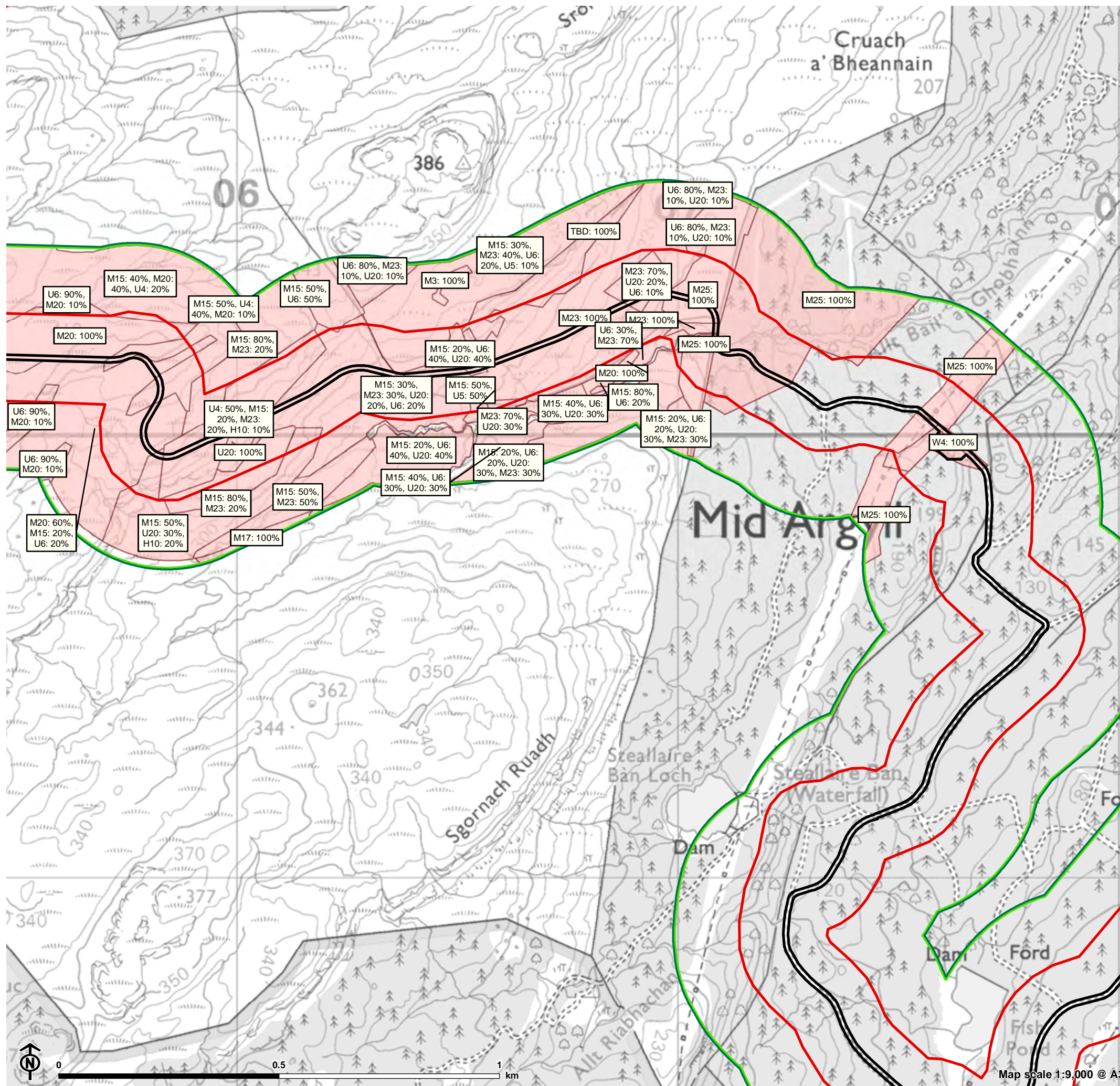


Figure 8.4.5: National Vegetation Classification (NVC) Survey Results



- Site boundary
- Infrastructure footprint
- Ecology Survey Area (ESA)
- National Vegetation Classification (NVC)

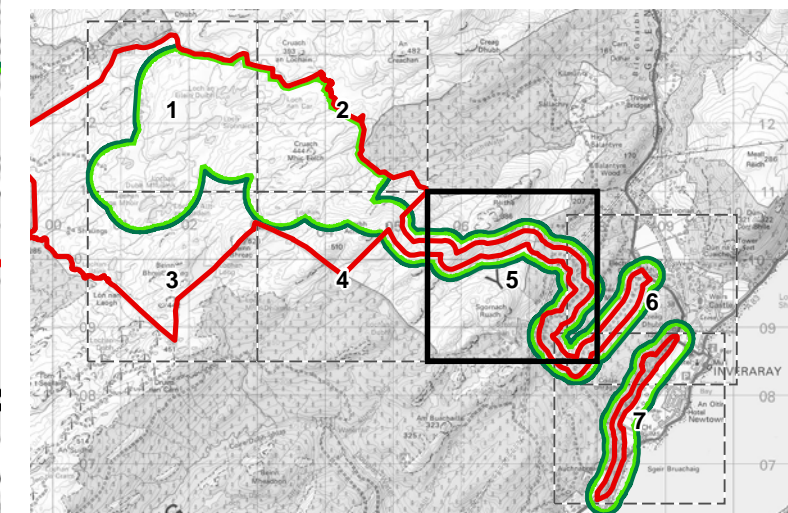
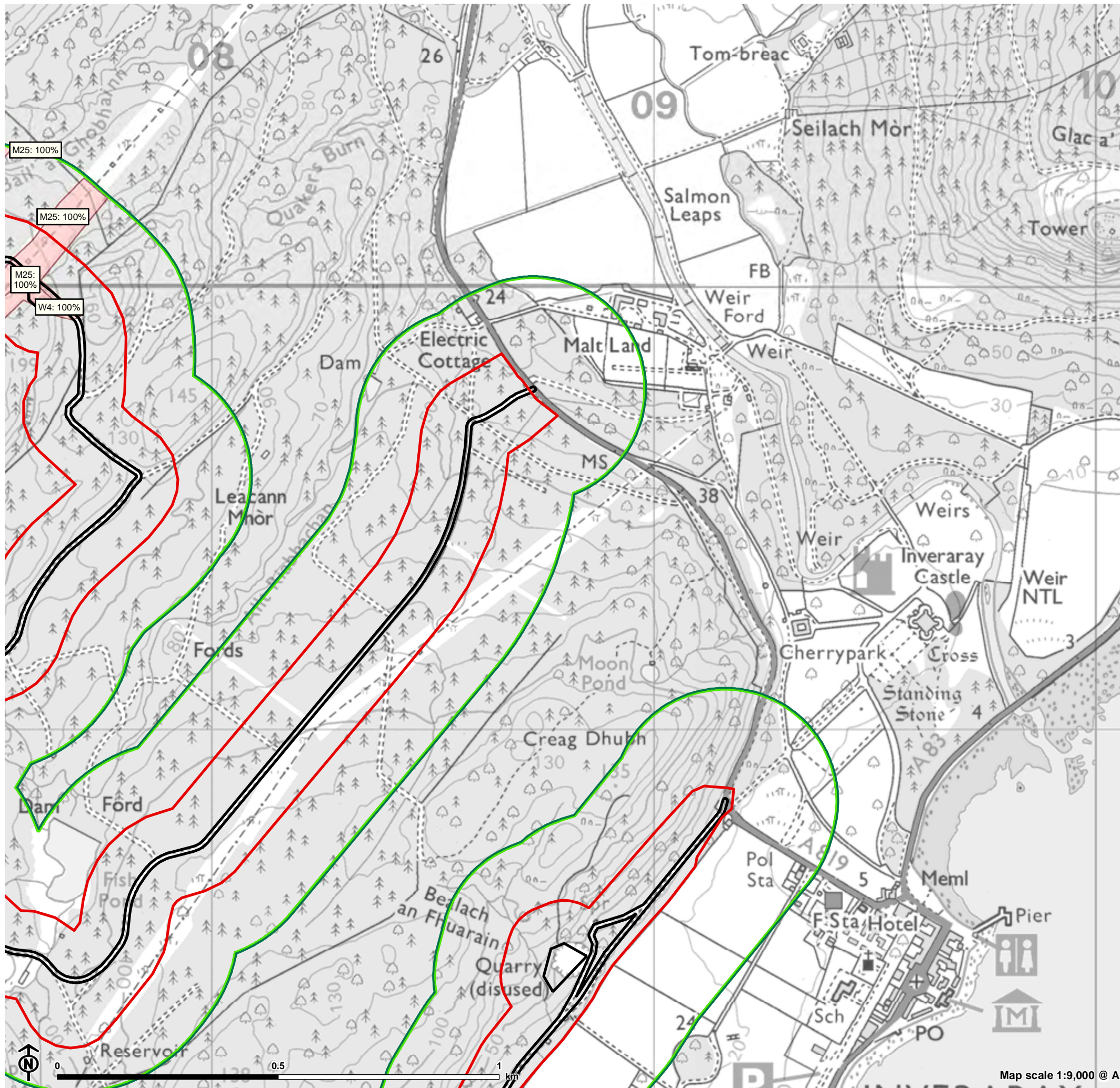


Figure 8.4.6: National Vegetation Classification (NVC) Survey Results



- Site boundary
- Infrastructure footprint
- Ecology Survey Area (ESA)
- National Vegetation Classification (NVC)

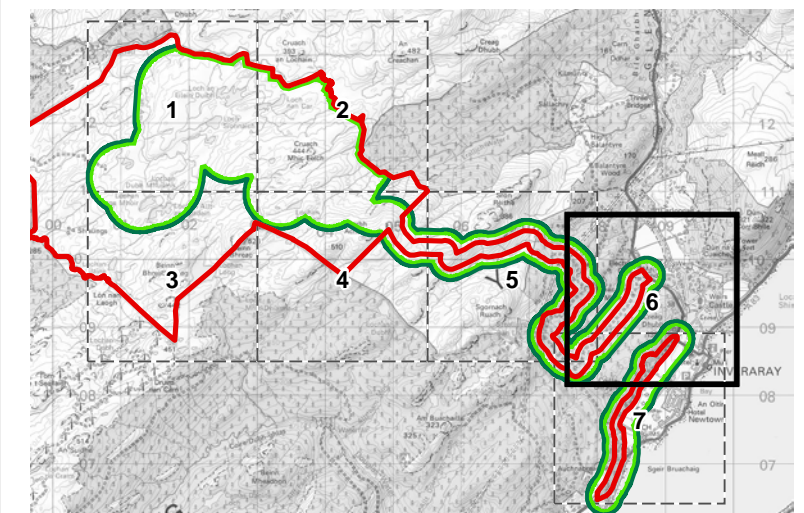
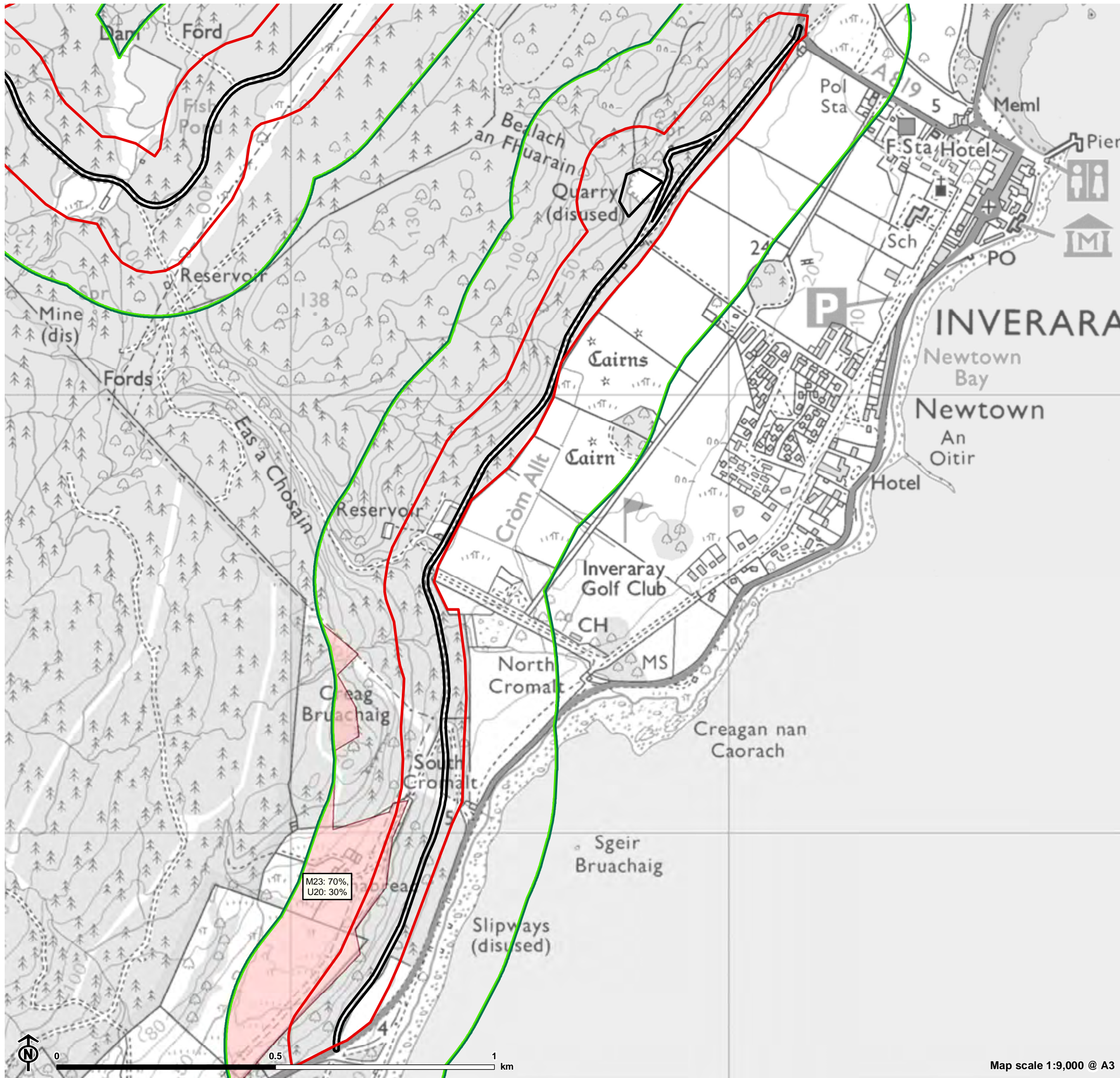


Figure 8.4.7: National Vegetation Classification (NVC) Survey Results



- Site boundary
- Infrastructure footprint
- Ecology Survey Area (ESA)
- National Vegetation Classification (NVC)

