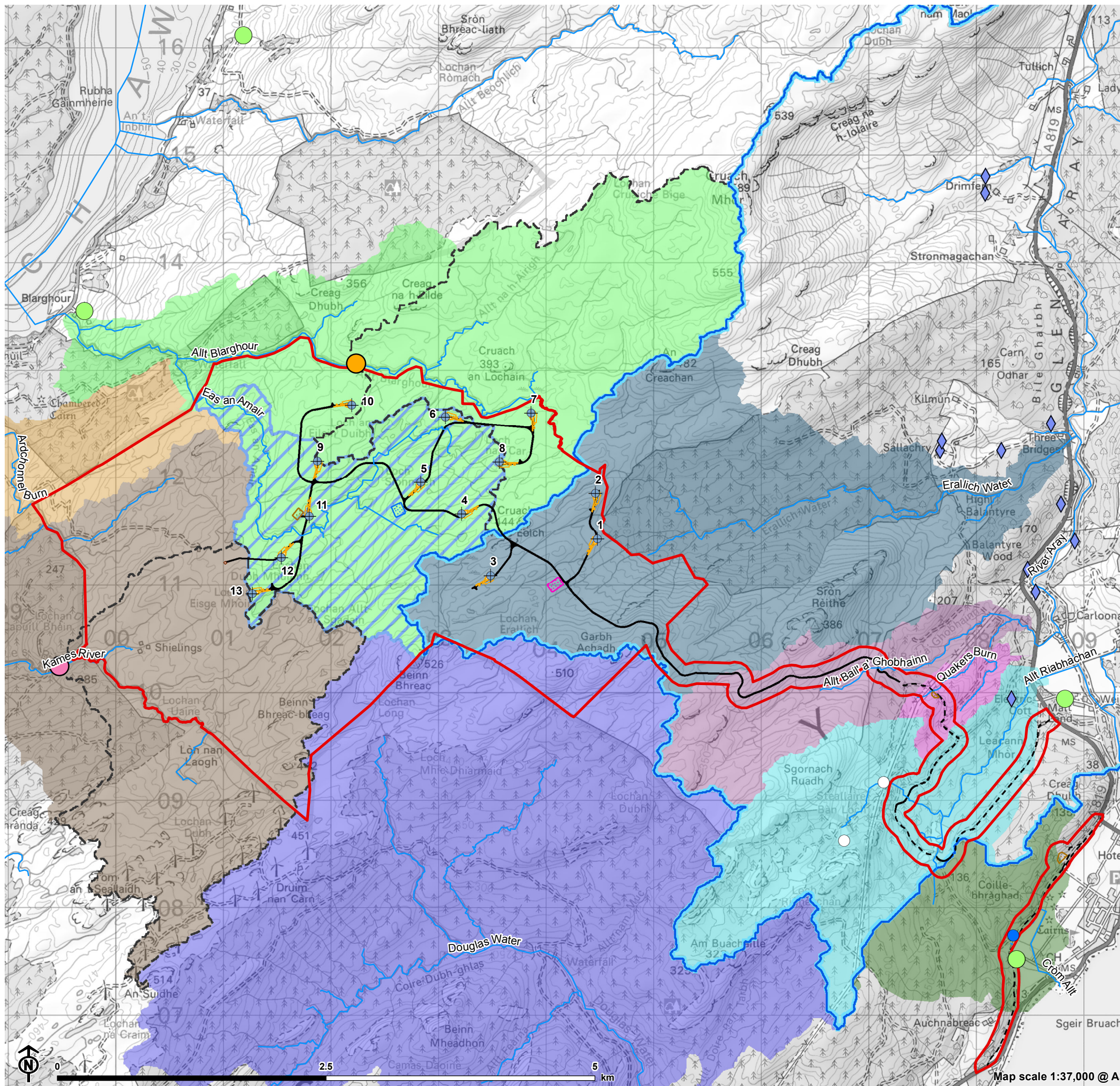


Figure 7.1: Hydrological Features, Main Catchments, Topography, and Private Water Supplies



- Site boundary
 - Turbine
 - Borrow pit
 - Temporary construction compound
 - Permanent compound including substation and BESS
 - Temporary hardstanding
 - Permanent hardstanding
 - Permanent met mast
 - Existing access track
 - Proposed track
 - Main watercourse
- Catchments**
- River Aray
 - Allt Bail a' Ghobhainn
 - Allt Blarghour
 - Allt Riabhachan
 - Ardchonel Burn
 - Crom Allt
 - Douglas Water
 - Eas An Amair
 - Erallich Water
 - Kames River
 - Quakers Burn
- Hydropower station**
- Allt Blarghour
 - Kames River
- Hydropower catchment
- Public and Private Water Supplies**
- Scottish Water abstraction point
 - Scottish Water treatment works
 - Private Water Supply (PWS) source
 - SEPA CAR Licenced Abstraction