

An Càrr Dubh Wind Farm
for Car Duibh Wind Farm Ltd

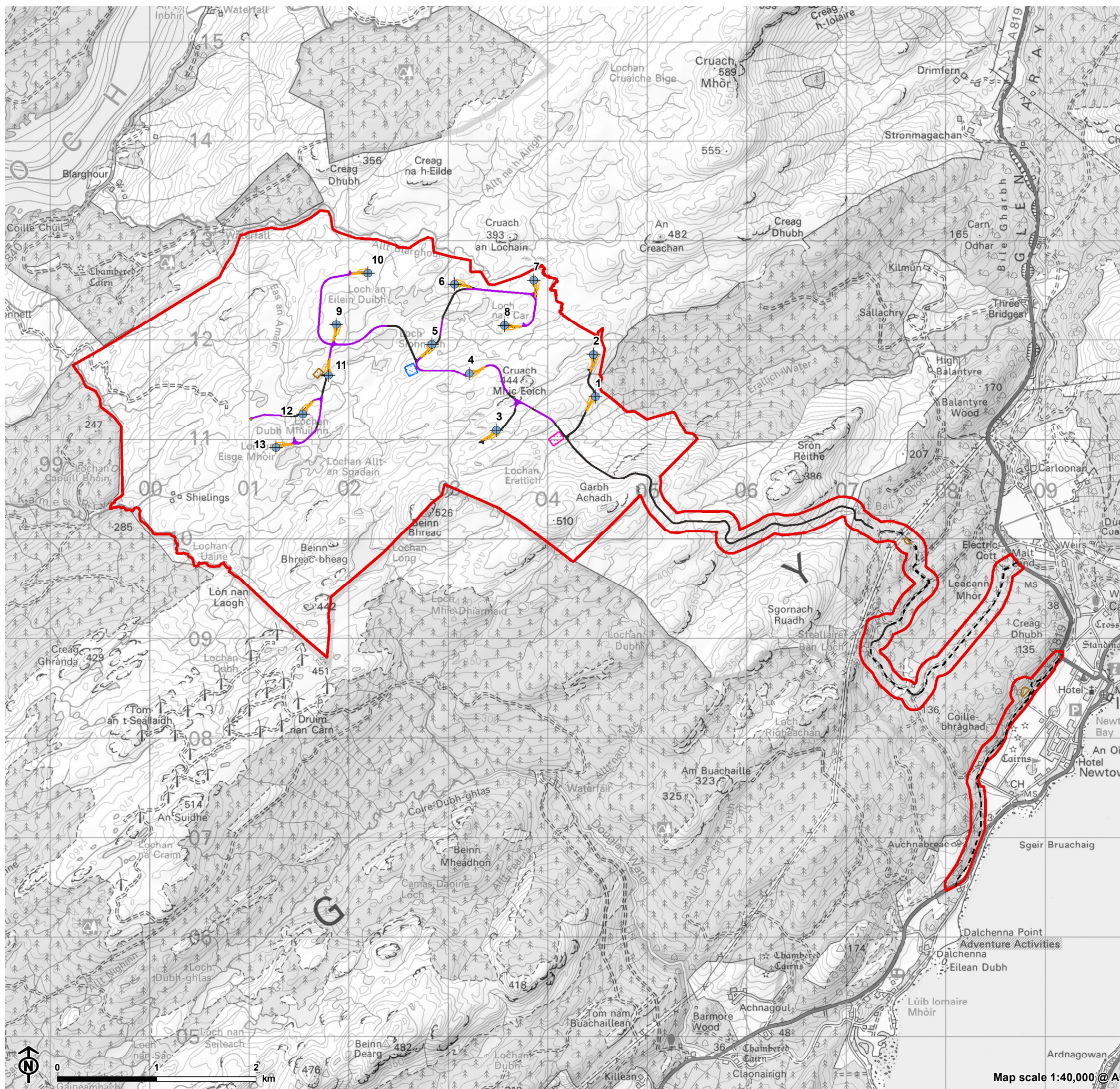


Figure 1: Site Location

 Site boundary



Figure 2: Site Layout

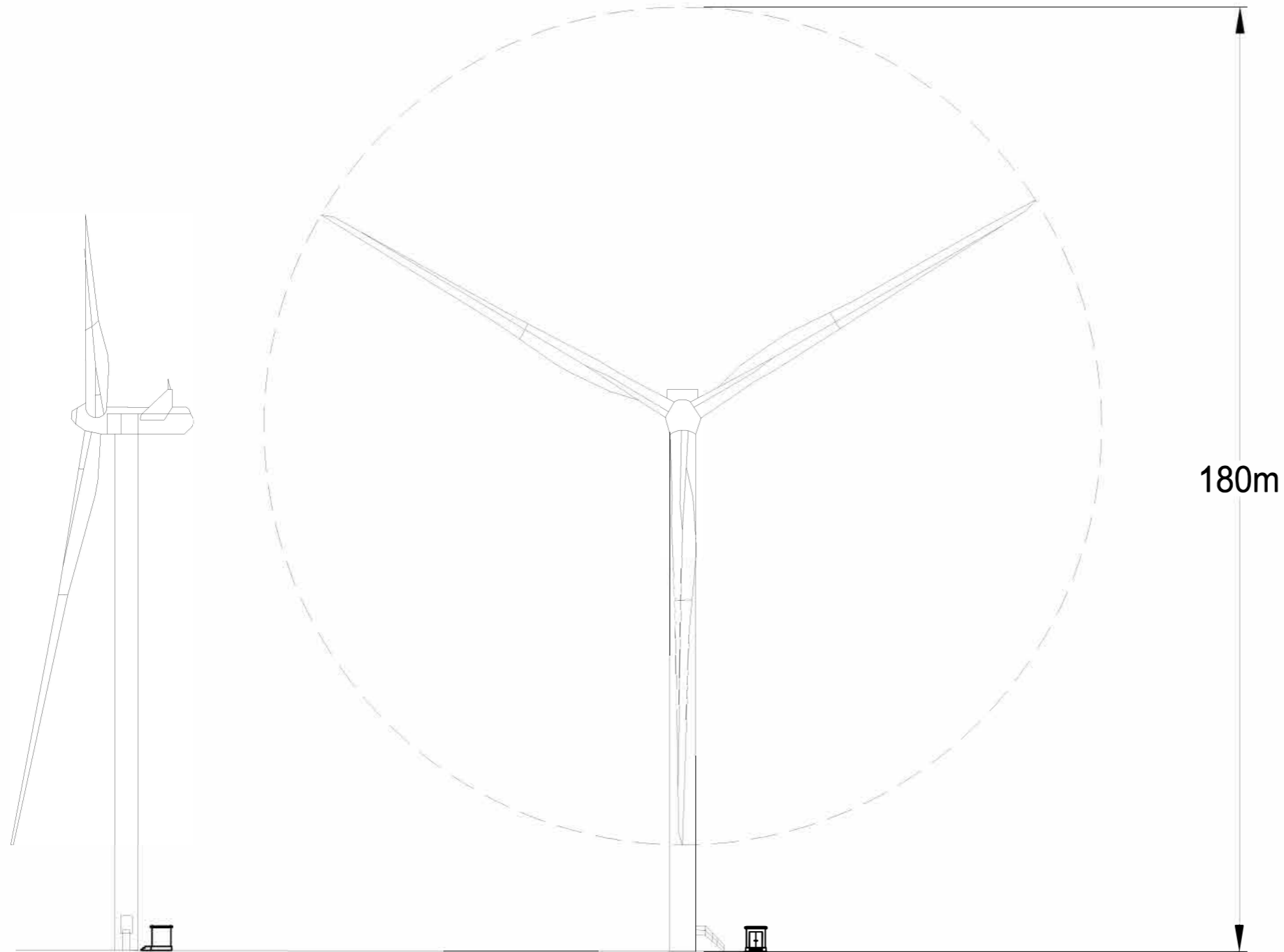


- Site boundary
- Turbine (final layout)
- Borrow pit
- Temporary construction compound
- Permanent compound including substation and BESS
- Temporary hardstanding
- Permanent hardstanding
- Permanent met mast
- Existing access track
- Proposed floating track
- Proposed cut-and-fill track



Map scale 1:40,000 @ A3

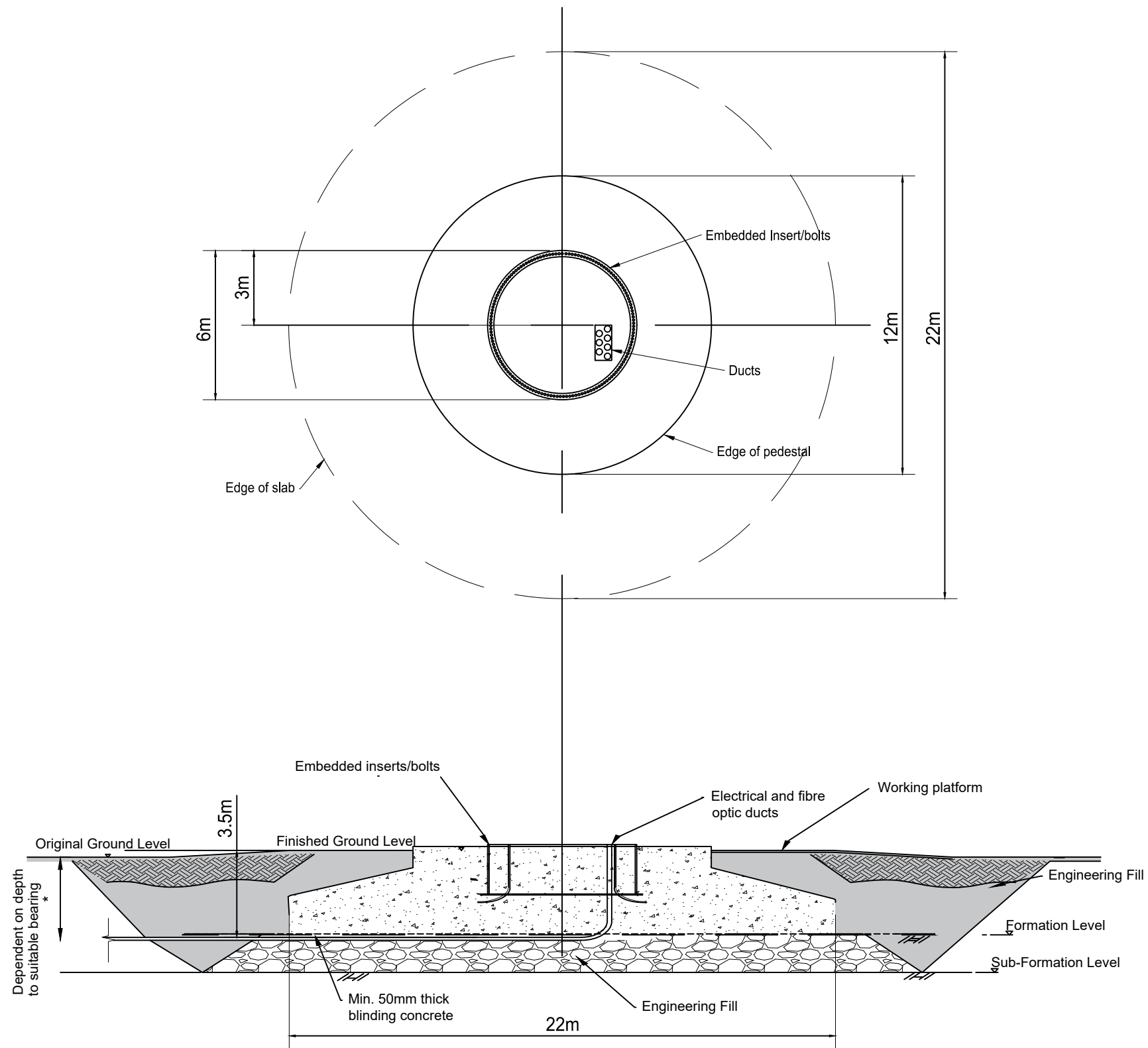
Figure 3: Typical Wind Turbine - 180m Tip Height



NOT TO SCALE

THIS DRAWING HAS BEEN PRODUCED FOR DISCUSSION / DESIGN DEVELOPMENT PURPOSES ONLY
Drawing Reference: 104565

Figure 4: Typical Turbine Foundation



NOT TO SCALE

THIS DRAWING HAS BEEN PRODUCED FOR DISCUSSION / DESIGN DEVELOPMENT PURPOSES ONLY
Drawing Reference: 104565

Figure 5: Typical Crane Hardstanding

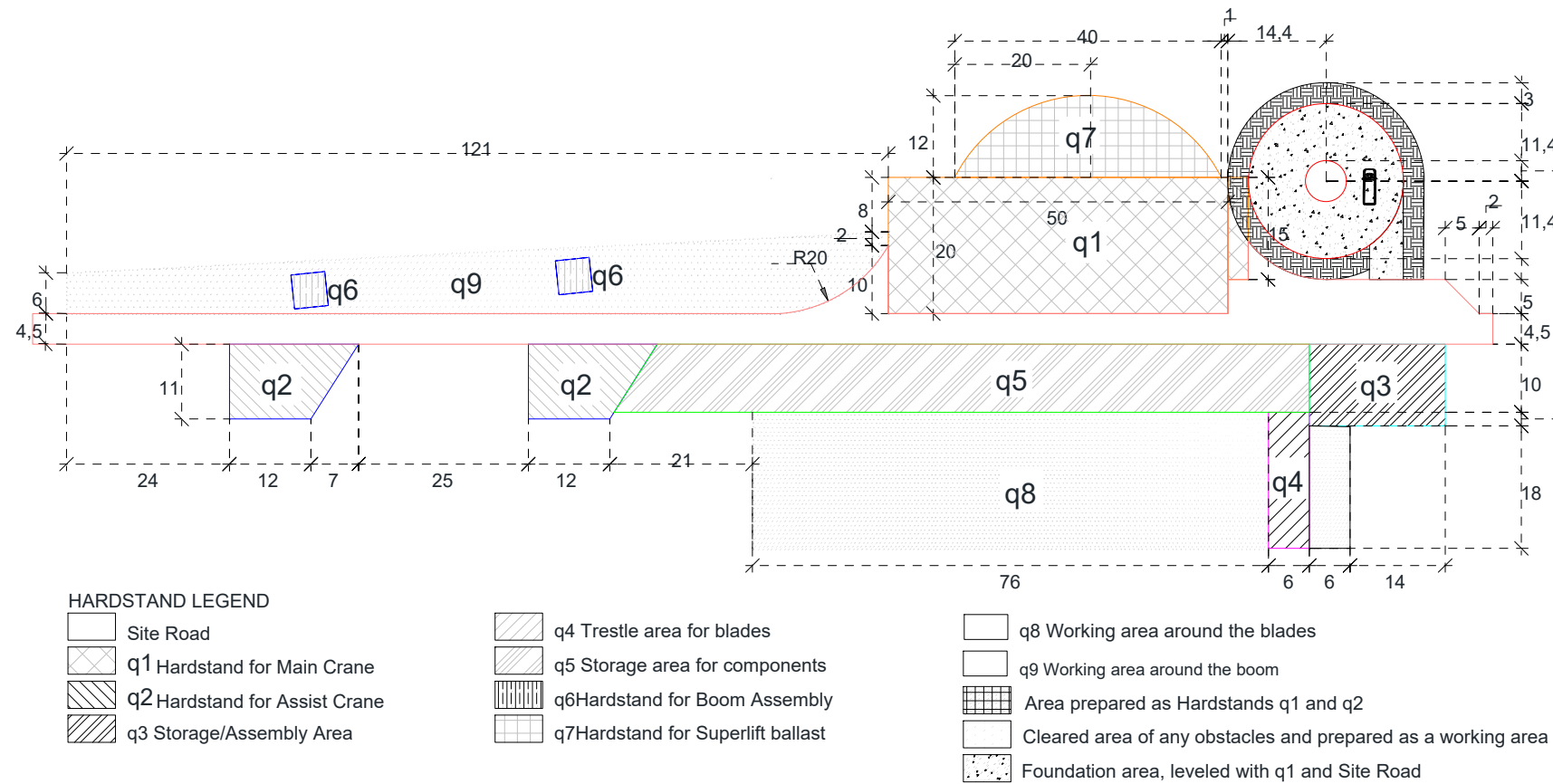


Figure 1: Example of Installation Area with modified rectangular Hardstand for the Main Crane (LG1750)

Area	Description	Max. fall	Area (m ²)	Dimensions (m)	Maintenance	Relationship to other q areas
Road	Site road section from q1 to q2	≤0.25%		4,5	Permanent	Level with q1, q2, q3 and q5
q1	Hardstand for Main Crane	≤0.25%	1,045	(50 x 20) + (15 x 3)	Permanent	See comments below
q2	Hardstand for Assist Crane	1.5%	341	2x (12 x 11) + 77	Temporary	Ideally the q2 will be level with the site road, if not, then access for the assist crane must be provided.
q3	Storage/ Assembly Area	≤0.25%	240	20 x 12	Temporary	Level with site road, q4 and q5
q4	Trestle area for blades	≤0.25%	120	6 x 20	Temporary	Level with q3, q5 and q8
q5	Storage area for components	≤0.25%	975	(96 x 10) + 15	Temporary	Level with site road, q2, q3, q4 and q8
q6	Hardstand for boom assembly	≤0.25%	50 / 75	2x (5 x 5) or 3x (5 x 5)	Temporary	Level with or higher than q1.
q7	Hardstand for Superlift ballast	≤0.25%	336	12 x 40 – 12 x 12	Temporary	Level with q1
q8	Working area around the blades	≤0.25%	1.628	76 x 20 + 6 x 18	Temporary	Level with q4 and q5
q9	Working area around the boom	≤ 1.5%	835 or 810	885m ² – (2x 5x5) or 885m ² – (3x 5x5)	Temporary	Level with site road

NOT TO SCALE

THIS DRAWING HAS BEEN PRODUCED FOR DISCUSSION / DESIGN DEVELOPMENT PURPOSES ONLY
Drawing Reference: 104565

Figure 6: Typical Anemometer Mast

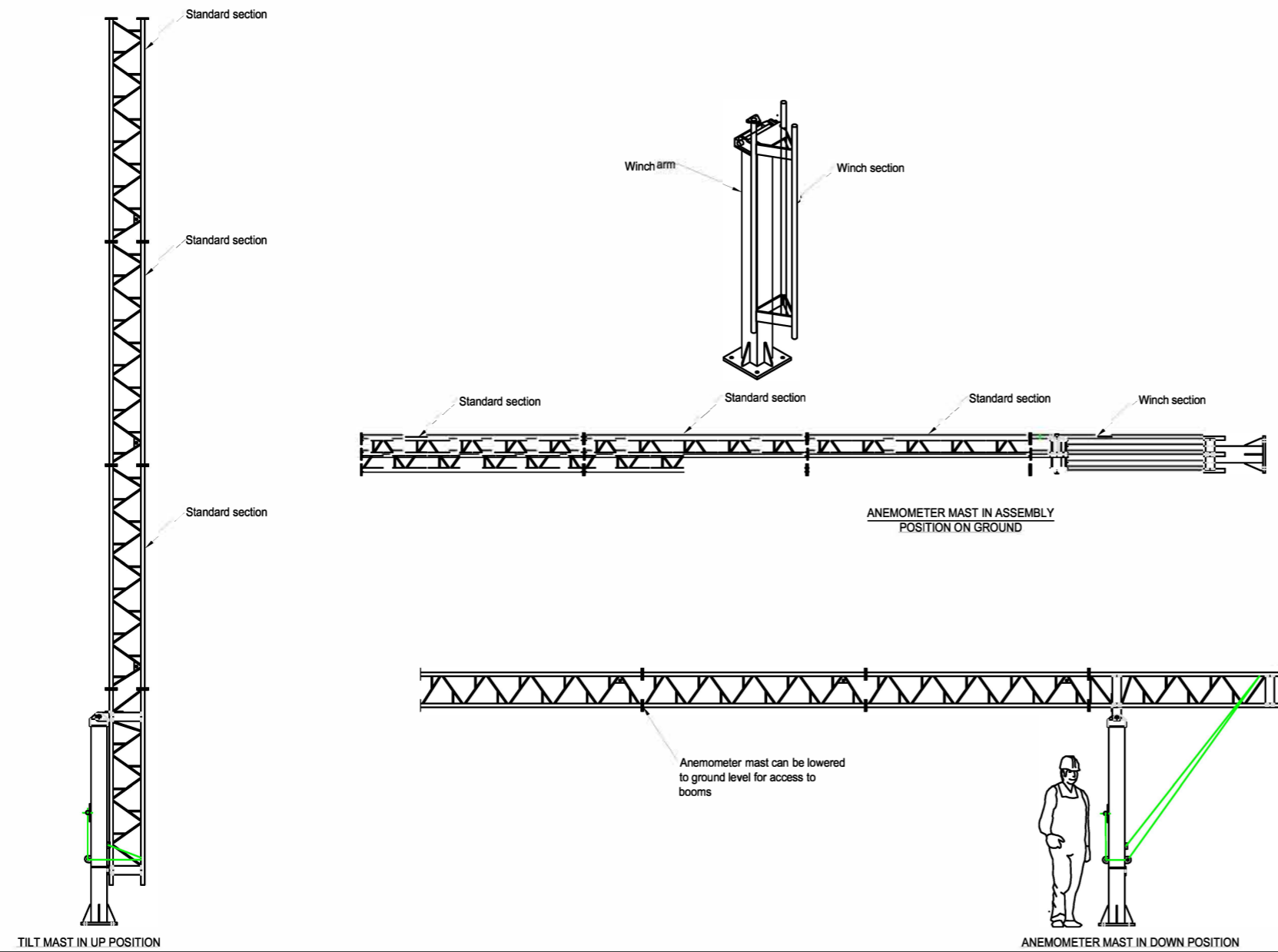
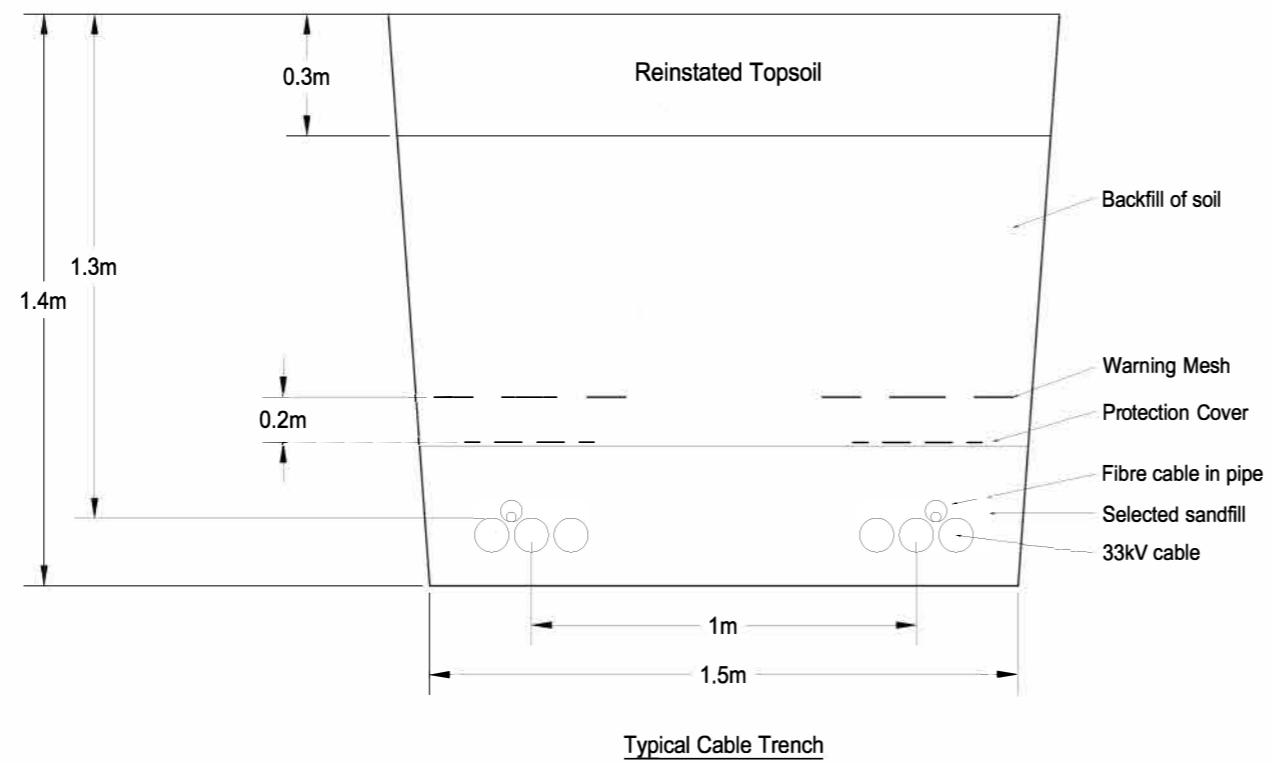


Figure 7: Typical Cable Trench



NOT TO SCALE

THIS DRAWING HAS BEEN PRODUCED FOR DISCUSSION / DESIGN DEVELOPMENT PURPOSES ONLY
Drawing Reference: 104565

Figure 8: Proposed Compound and substation Layout

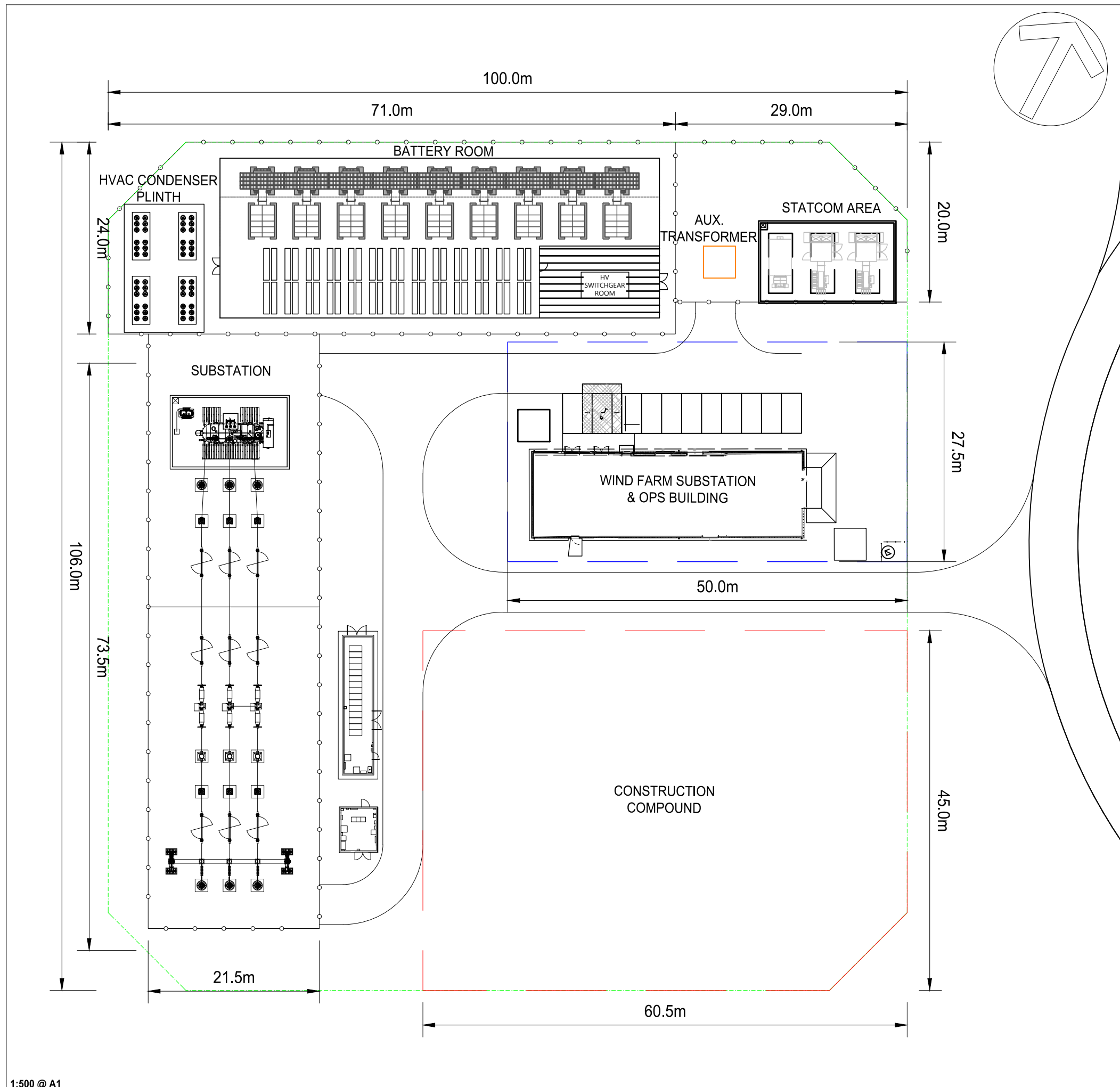
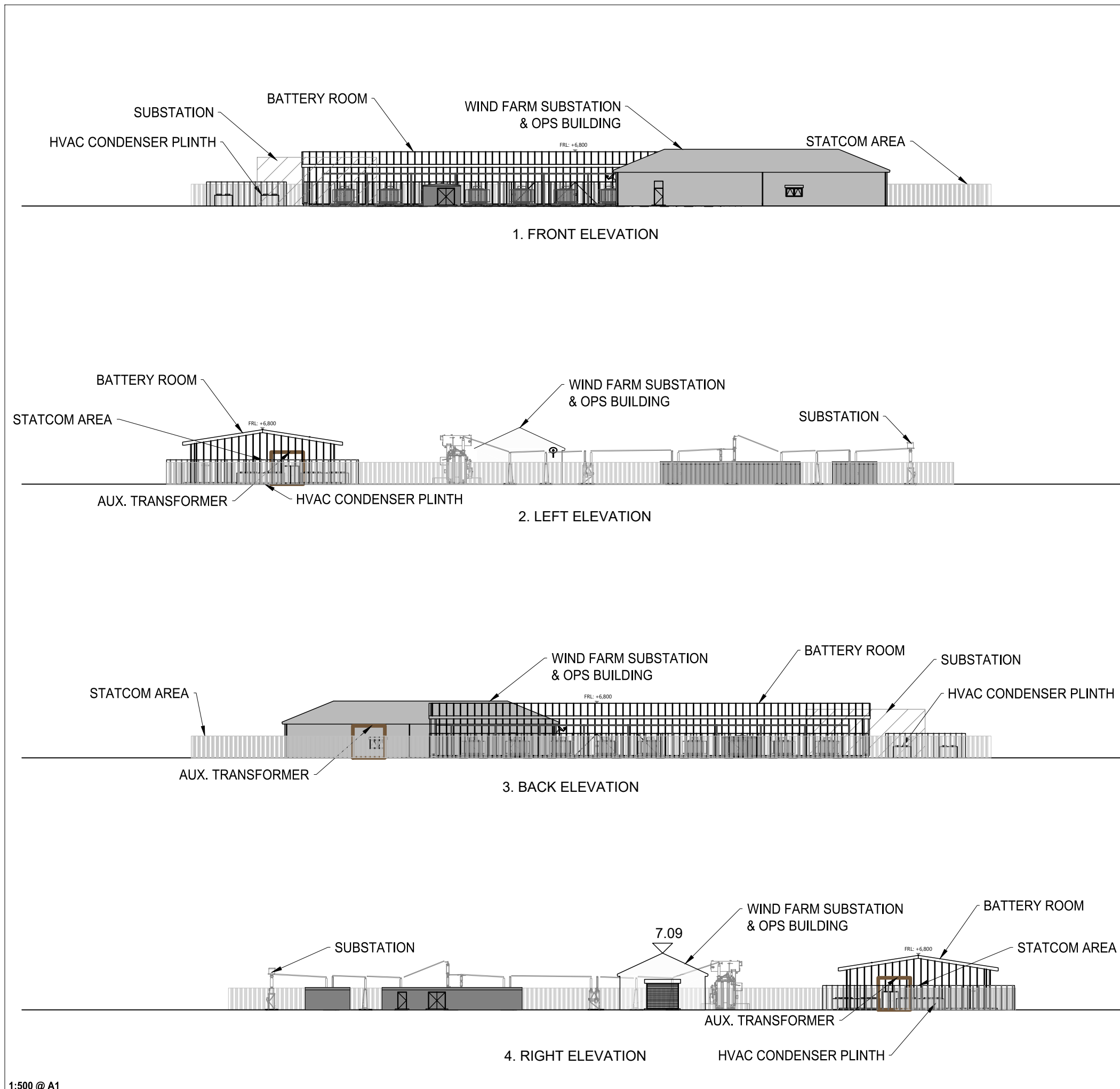


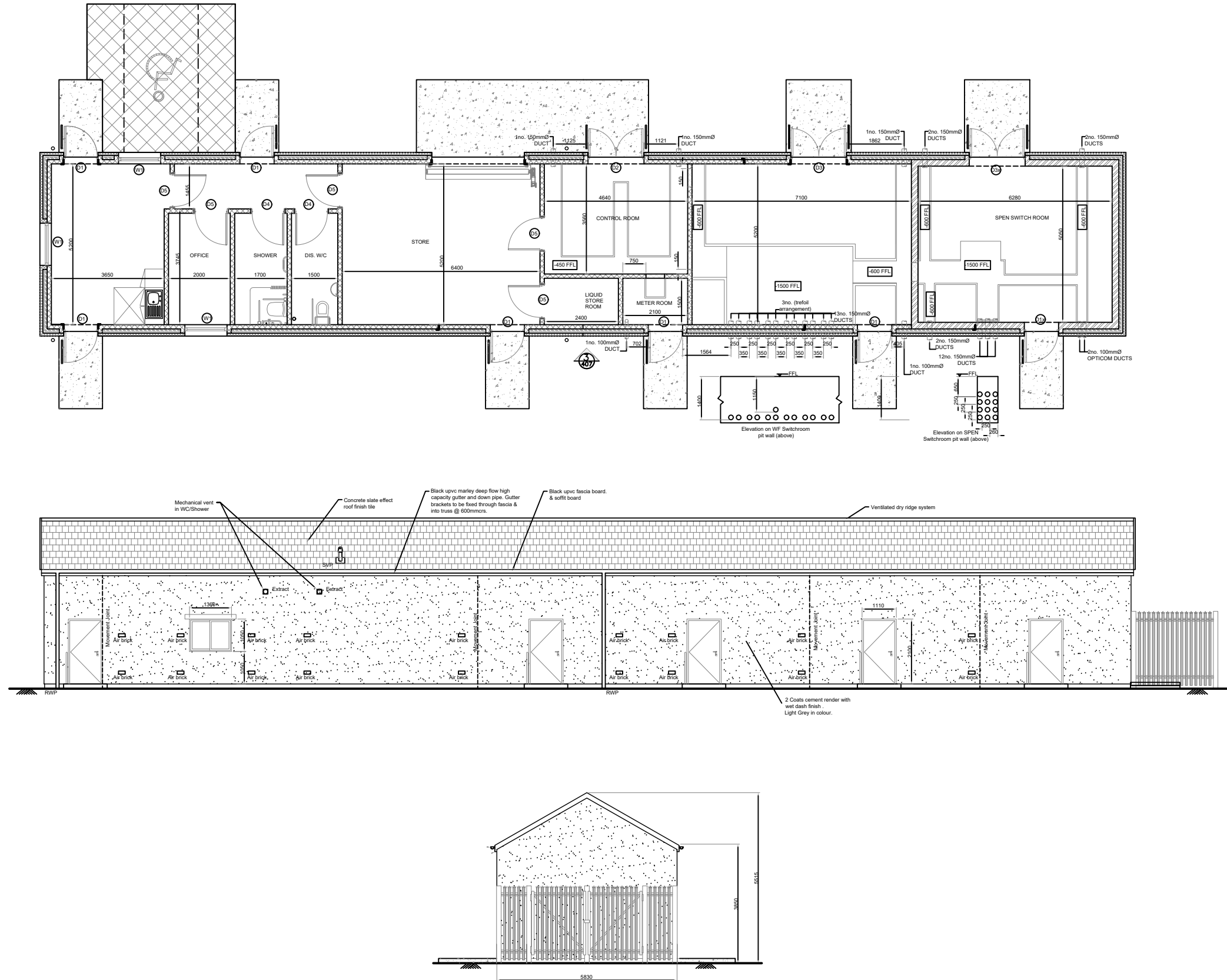
Figure 9: Proposed Substation Elevations



1:500 @ A1

THIS DRAWING HAS BEEN PRODUCED FOR DISCUSSION / DESIGN DEVELOPMENT PURPOSES ONLY
Drawing Reference: 104565

Figure 10: Typical Control Building - Plan and Elevation



NOT TO SCALE
THIS DRAWING HAS BEEN PRODUCED FOR DISCUSSION / DESIGN DEVELOPMENT PURPOSES ONLY
Drawing Reference: 104565

Figure 11: Typical Onsite Energy Storage Facility - Plan and Elevation

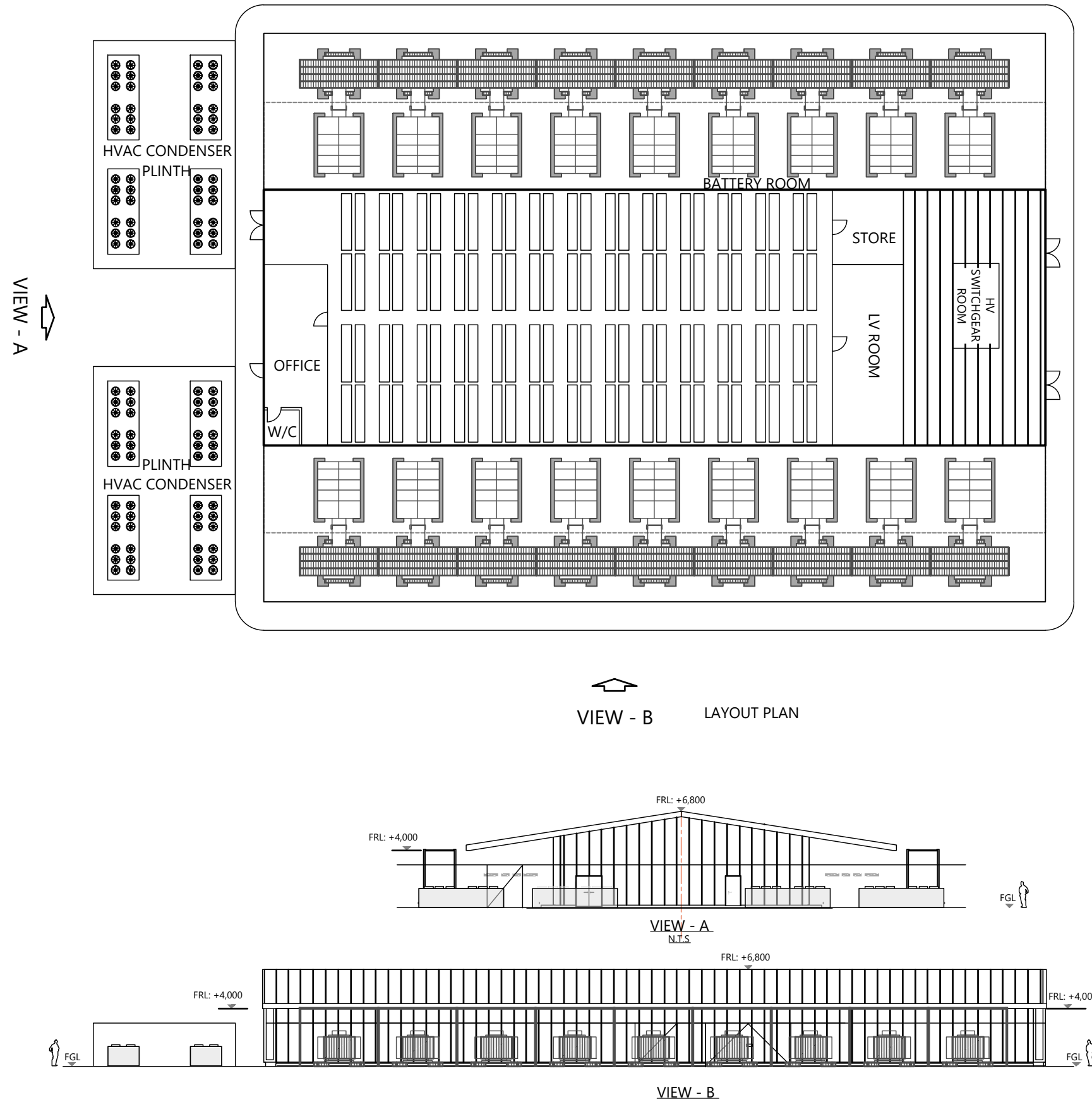


Figure 12: Proposed Construction Compound Layout

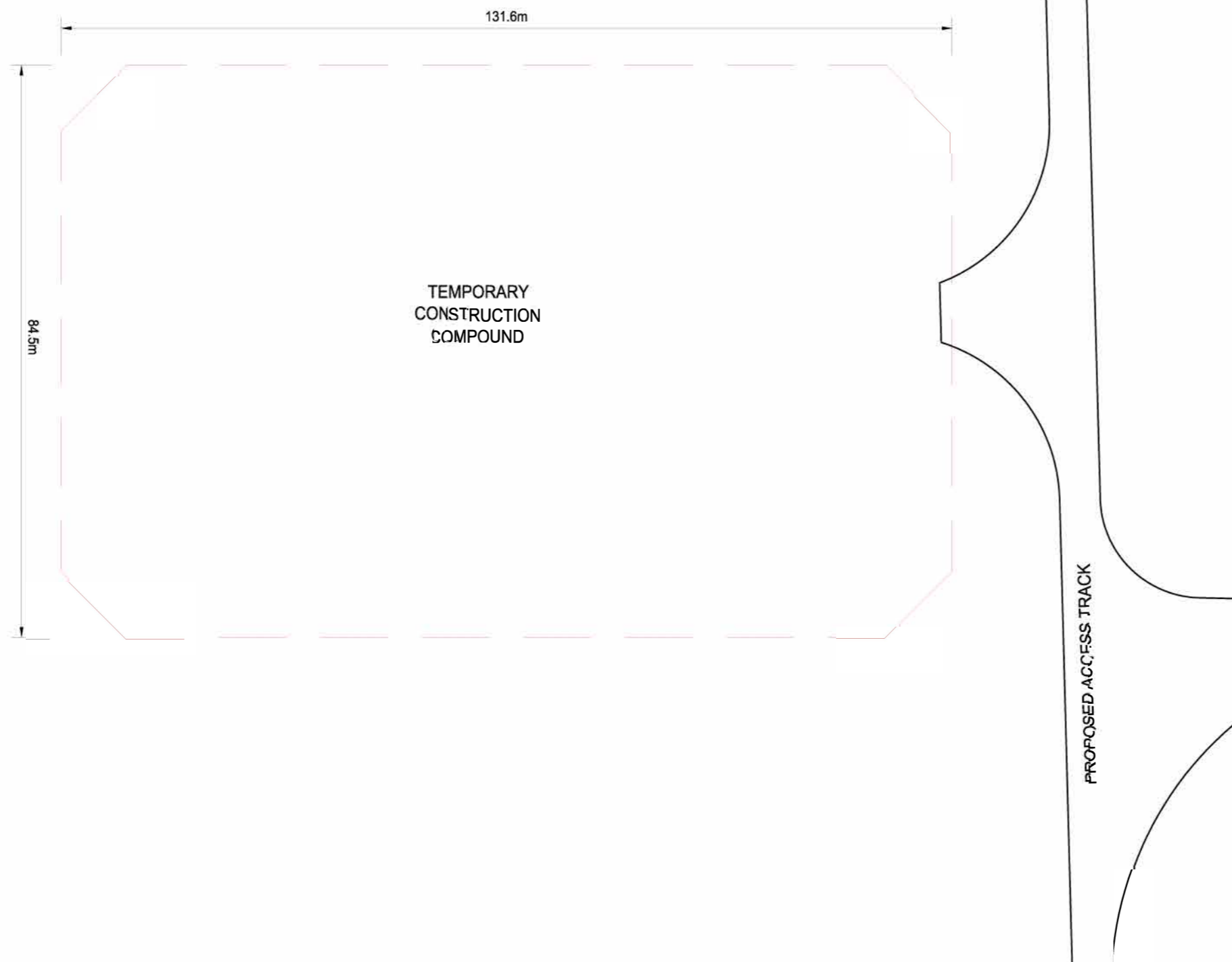


Figure 13: Typical Cut and Floating Track Details

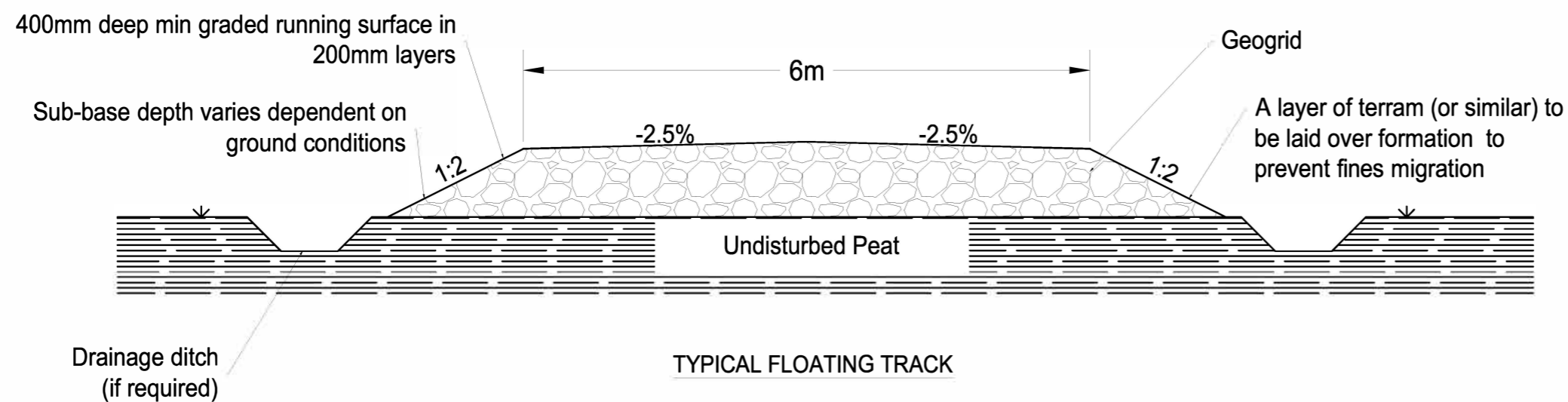
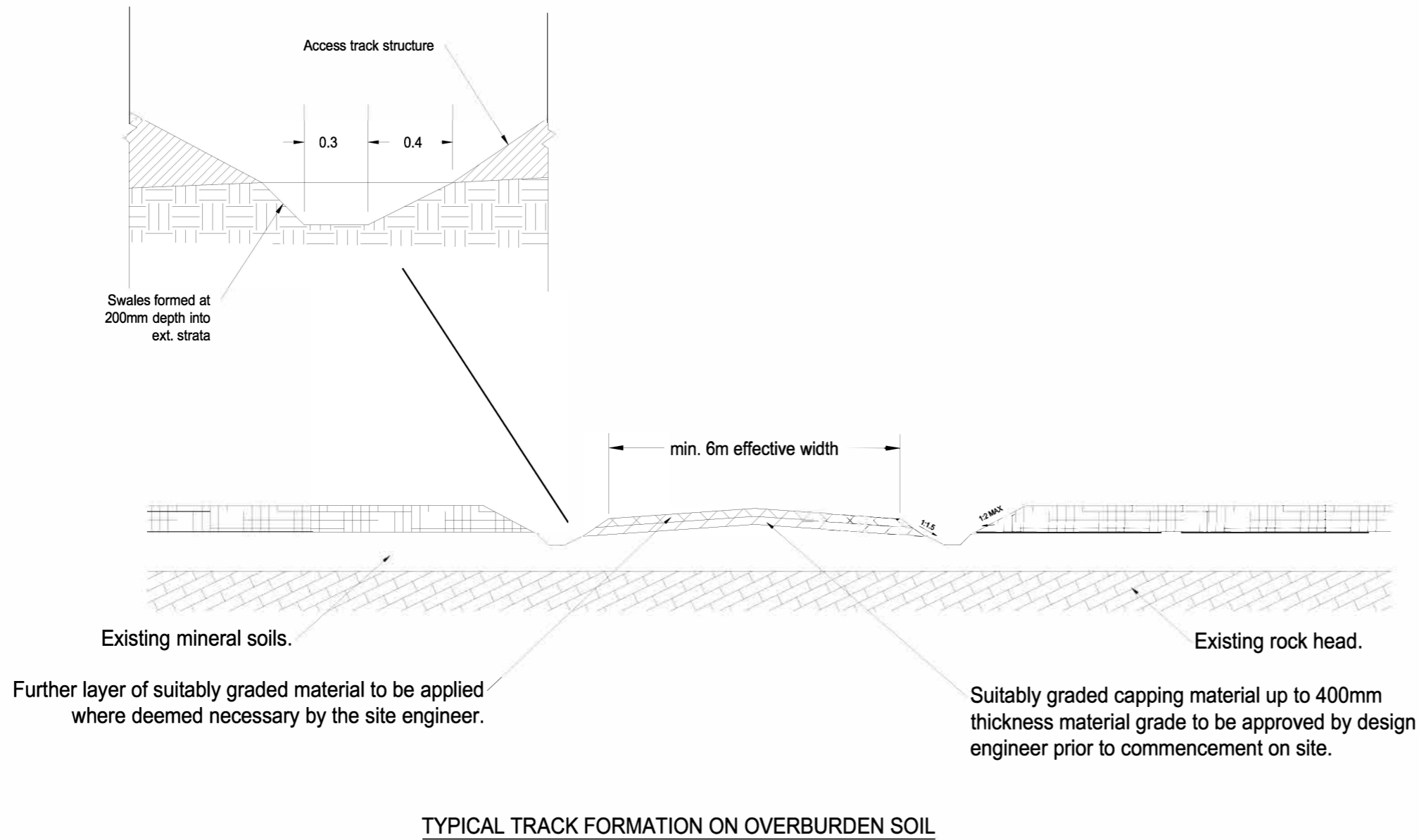
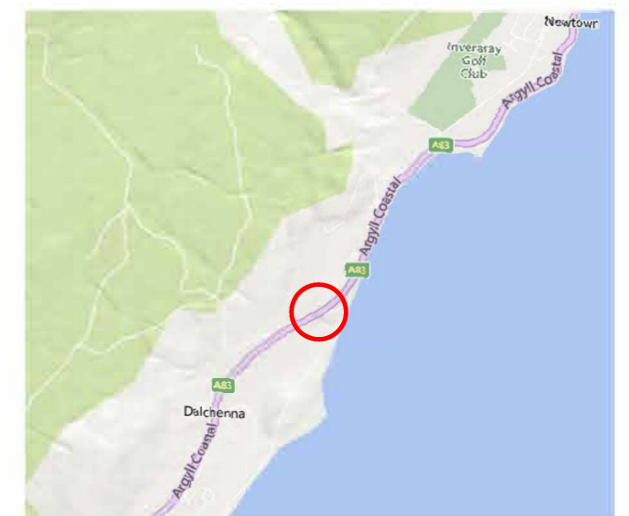


Figure 14: Indicative Junction Design on A83

KEY:

 Proposed Junction



NOT TO SCALE

THIS DRAWING HAS BEEN PRODUCED FOR DISCUSSION / DESIGN DEVELOPMENT PURPOSES ONLY
Drawing Reference: 104565

Figure 15: Indicative Junction Design on Upper Ave / A819

KEY:

- Proposed Junction
- 160m x 4.5m Visibility Splay



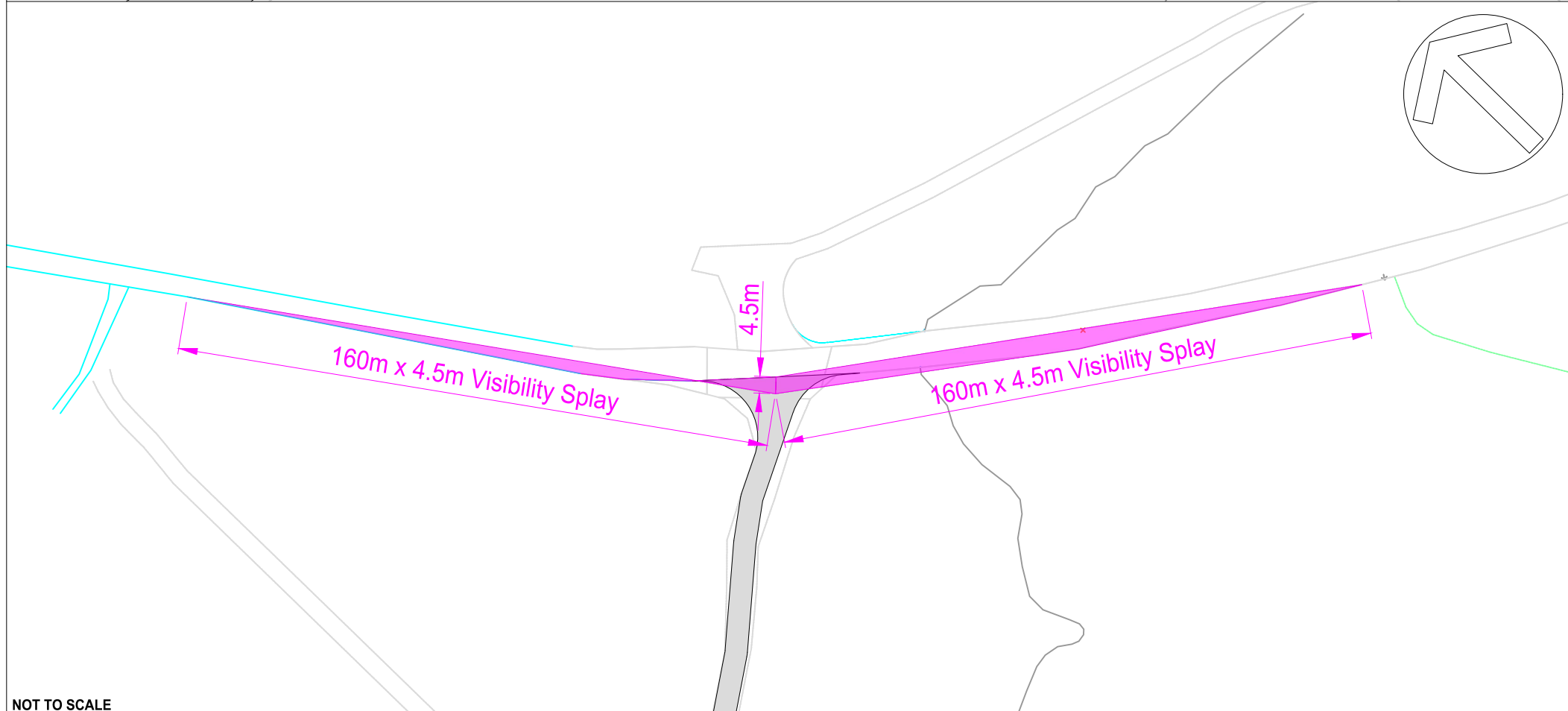
NOT TO SCALE

THIS DRAWING HAS BEEN PRODUCED FOR DISCUSSION / DESIGN DEVELOPMENT PURPOSES ONLY
Drawing Reference: 104565

Figure 16: Indicative Junction Design on A819

KEY:

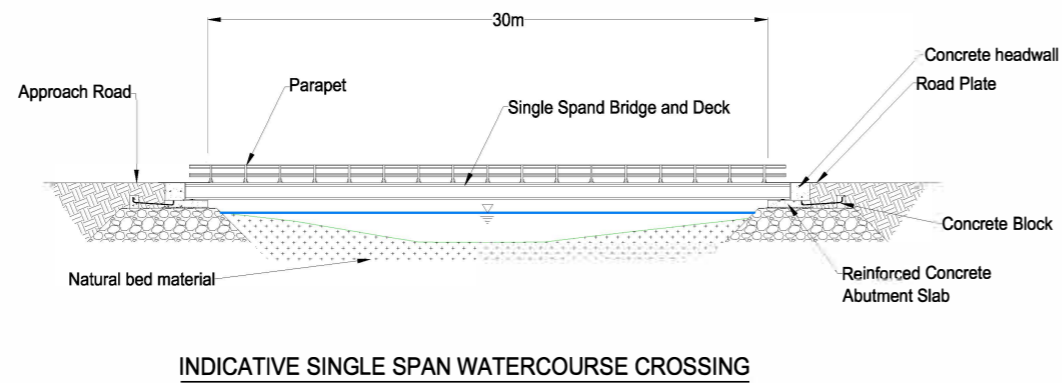
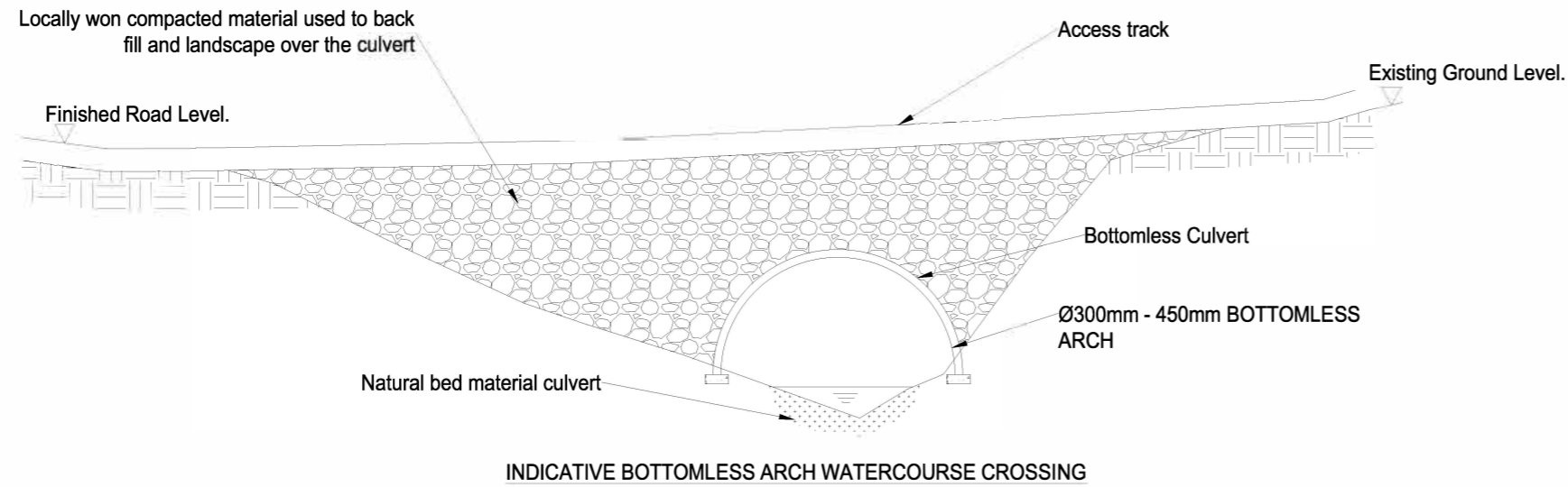
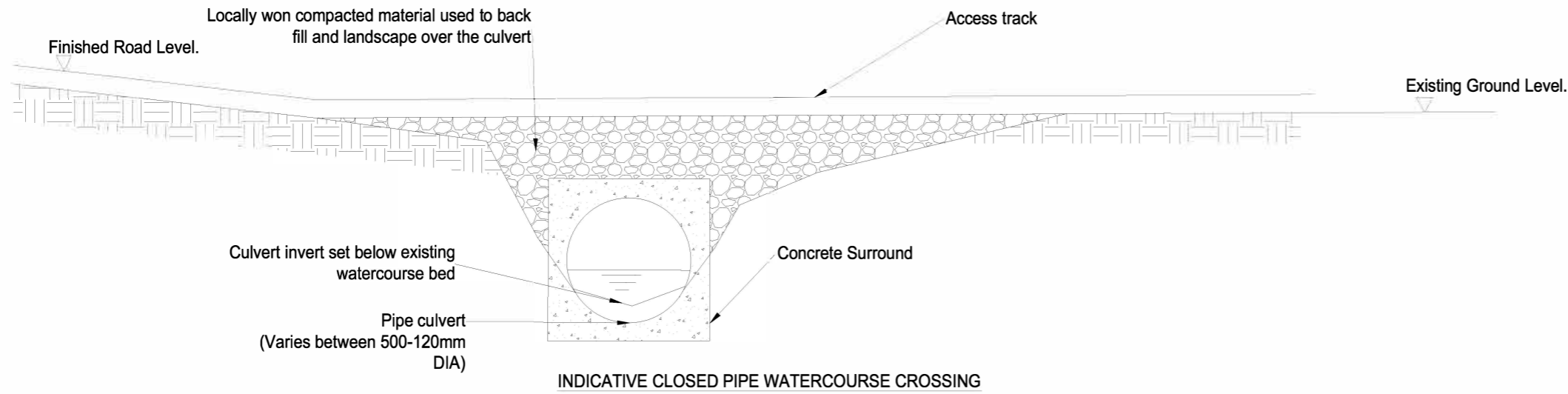
- Proposed Junction
- 160m x 4.5m Visibility Splay



NOT TO SCALE

THIS DRAWING HAS BEEN PRODUCED FOR DISCUSSION / DESIGN DEVELOPMENT PURPOSES ONLY
Drawing Reference: 104565






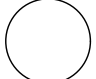


Figure 17: Typical Watercourse Crossing Methods

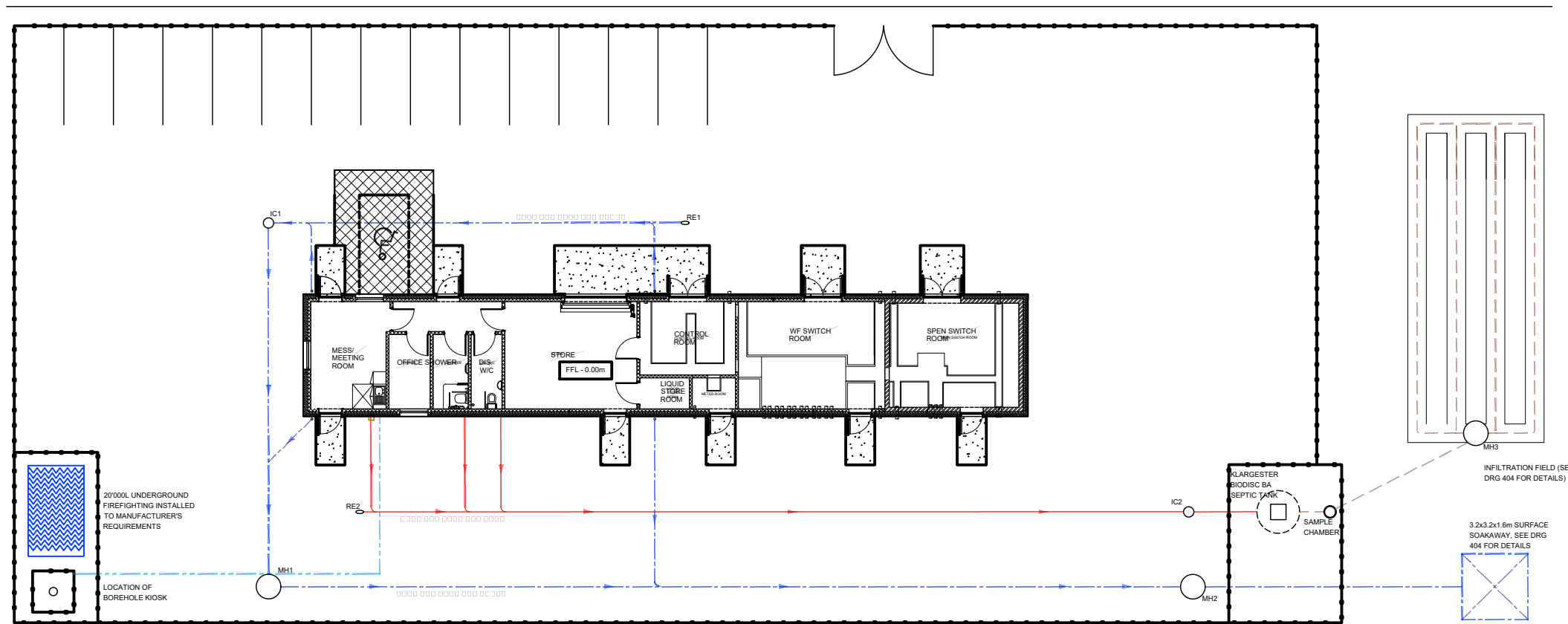


NOT TO SCALE

THIS DRAWING HAS BEEN PRODUCED FOR DISCUSSION / DESIGN DEVELOPMENT PURPOSES ONLY
Drawing Reference: 104565

Figure 18: Drainage Design

-  Surface Drainage Pipe (D.N. 150mm UPVC) UNO
-  Foul Drainage Pipe (D.N. 110mm UPVC) UNO
-  Treated Drainage Pipe (D.N. 110mm UPVC) UNO
-  Borehole Water Supply
-  Inspection/Sample Chamber
-  Precast Manhole
-  Rodding Eye
-  Direction of Flow



NOT TO SCALE

THIS DRAWING HAS BEEN PRODUCED FOR DISCUSSION / DESIGN DEVELOPMENT PURPOSES ONLY
Drawing Reference: 104565