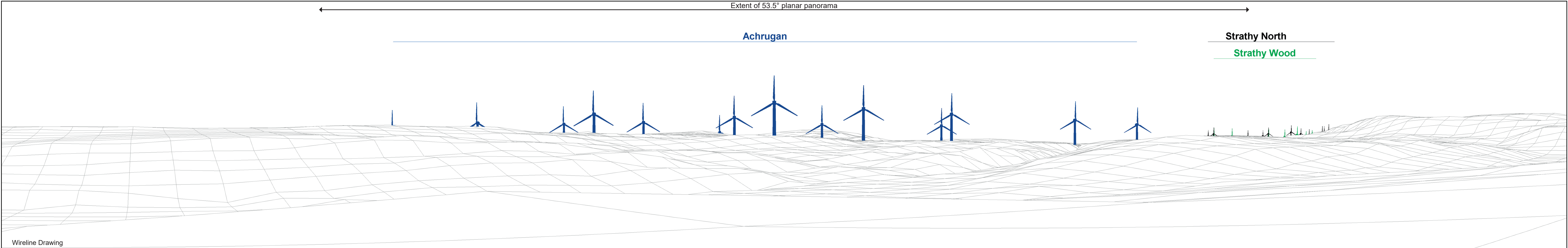




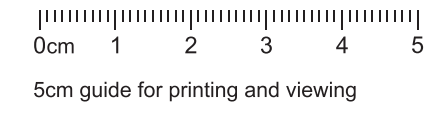
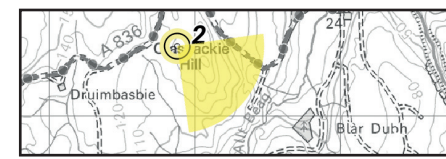
Baseline Photograph

This image provides landscape and visual context only

Extent of 53.5° planar panorama



Wireline Drawing



- ✦ Proposal
- ✦ Consented
- ✦ Existing
- ✦ Under Construction

OS Reference: 278625 964662
 Eye Level: 52.54m AOD
 Direction of View: 127°
 Distance to Development: 3036 m

Horizontal field of view: 90° (cylindrical projection)
 Principal Distance: 522mm
 Paper Size: 841 x 297 mm
 Correct printed image size: 820 x 130 mm

Camera: NIKON D610
 Lens: 50mm
 Camera Height: 1.5m AGL
 Date and Time: 15/5/2024 17:25

Figure: 2a
Viewpoint 2: Armadale

4

3

8

2

7

11

6

1

10

5

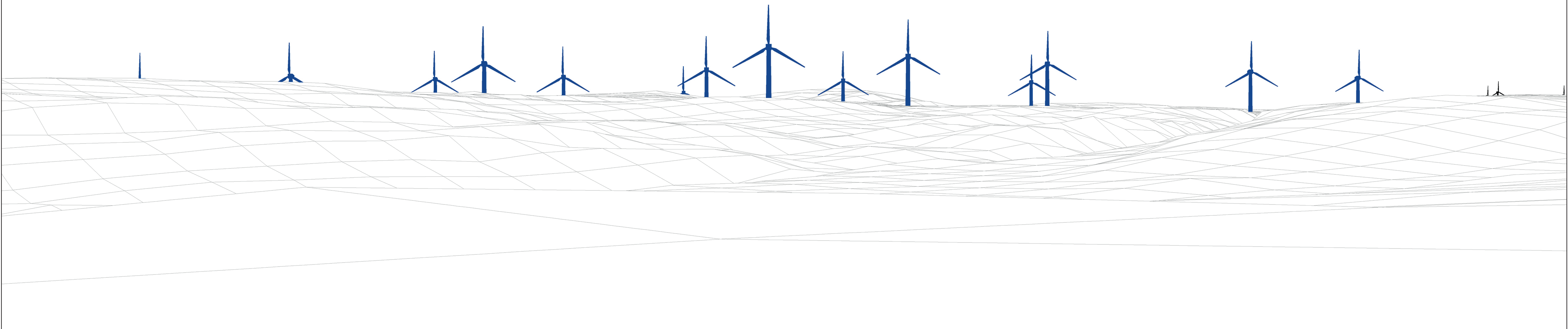
13

9

12

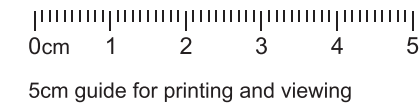
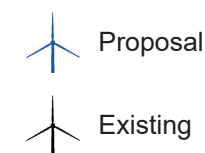
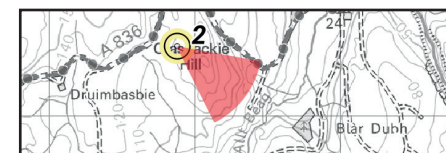
14

Strath North



Wireline Drawing

View flat at a comfortable arm's length



OS Reference: 278625 964662
 Eye Level: 52.54m AOD
 Direction of View: 127°
 Distance to Development: 3036 m

Horizontal field of view: 53.5° (planar projection)
 Principal Distance: 812.5mm
 Paper Size: 841 x 297 mm
 Correct printed image size: 820 x 260 mm

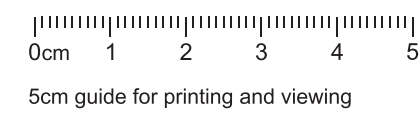
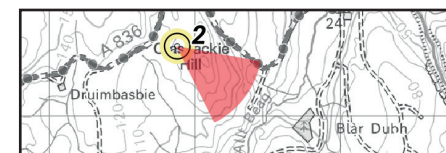
Camera: NIKON D610
 Lens: 50mm
 Camera Height: 1.5m AGL
 Date and Time: 15/5/2024 17:25

Figure: 2b
 Viewpoint 2: Armadale



Photomontage

View flat at a comfortable arm's length



OS Reference: 278625 964662
 Eye Level: 52.54m AOD
 Direction of View: 127°
 Distance to Development: 3036 m

Horizontal field of view: 53.5° (planar projection)
 Principal Distance: 812.5mm
 Paper Size: 841 x 297 mm
 Correct printed image size: 820 x 260 mm

Camera: NIKON D610
 Lens: 50mm
 Camera Height: 1.5m AGL
 Date and Time: 15/5/2024 17:25

Figure: 2c
 Viewpoint 2: Armadale