

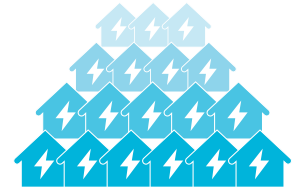
# 6

## Reasons Kitland Solar Farm is the right project for North Somerset

Statkraft have recently submitted plans to North Somerset Council for Kitland Solar Farm. The application has been given reference number [24/P/1011/FUL](#). When deciding the planning application, the Council will consider the views of local residents. You can view and comment on the application [here](#).

### 1 POWERING A GREEN FUTURE:

If consented, Kitland Solar Farm will generate renewable electricity equivalent to the needs of just over **13,000 homes** and support North Somerset Council's pledge to become net zero by 2030.



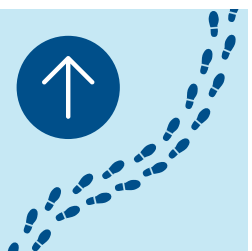
### 2 COMMUNITY BENEFIT FUND:

A Community Benefit Fund of over **£291,000\*** will be available over the operational lifetime of the project. The community could use this to fund a range of projects that meet local needs.



### 3 PUBLIC RIGHTS OF WAY

The pathway network will be increased, with over **3.5 km of new public rights of way** (PRoW) within the site, **improving/creating local connectivity and recreational opportunities**.



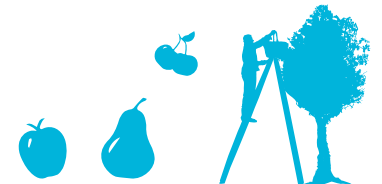
### 4 SUPPORTING HABITATS AND LOCAL WILDLIFE:

Enhancing biodiversity is one of our strongest natural defences against climate change. By planting wildflower meadows and hedgerows the site would contribute to approximately **117% biodiversity net gain for habitats**.



### 5 COMMUNITY ORCHARD:

**An orchard will be planted** in the eastern field, close to Wrington, to be enjoyed by the community.



### 6 LOCAL SUPPLIERS:

We aim to **support the local business community** by working with local suppliers during the construction and operation of our project. Scan this QR code to visit our **local suppliers registration page**:



We have highlighted some key facts from the application submitted in May 2024, no new information has been presented. For more information about Kitland Solar Farm, please visit [www.projects.statkraft.co.uk/kitland](http://www.projects.statkraft.co.uk/kitland)

[www.statkraft.co.uk](http://www.statkraft.co.uk)

\*The community benefit fund is based on 36.48 MW solar capacity x £200 x 40 years, if consented the value of the fund determined by installed solar capacity and inflation as fund is index linked.