

**LEGEND**

- Site Boundary
- Existing Water Courses and Features ^
- Contours/Spot Heights (Metres AOD) ^

**LANDMAP Geological Landscape #**

- PMBRKGL219: St. Florence, Pembrokeshire
- PMBRKGL220: The Ridgeway, Pembrokeshire
- PMBRKGL224: Jameston, Pembrokeshire \*\*
- PMBRKGL225: Pembroke, Pembrokeshire \*\*
- PMBRKGL228: Pembroke River, Pembrokeshire \*\*
- PMBRKGL234: Hundleton, Pembrokeshire \*\*

NOTE: \*\* Indicates the LANDMAP aspect areas that overlap to the Site boundary.  
 Sources: ^ OS Mapping # Natural Resource Wales GIS Data Set  
 Data collected for constraints and analysis mapping is based on publicly available sources at the time of preparation inserted using the British National Grid and may itself not be accurate. Stantec shall not be liable for the accuracy of data derived from external sources.

**FIGURE 7.6**  
 Project: Alleston Clean Energy

Drawing Title: **LANDMAP: Geological Landscape Aspect**


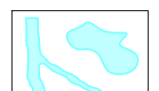
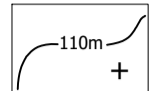


Date: 03.10.2023	Scale: 1:10,000 @A1 1:20,000 @A3	Drawn by: GS	Check by: FS
Project No: 333100437	Drawing No: LN-LP-06	Revision: A	

Stantec UK Limited  
 10th Floor  
 Bank House  
 8 Cherry Street  
 Birmingham  
 B2 5AL  
 T: 0121 633 2900  
 stantec.com/uk

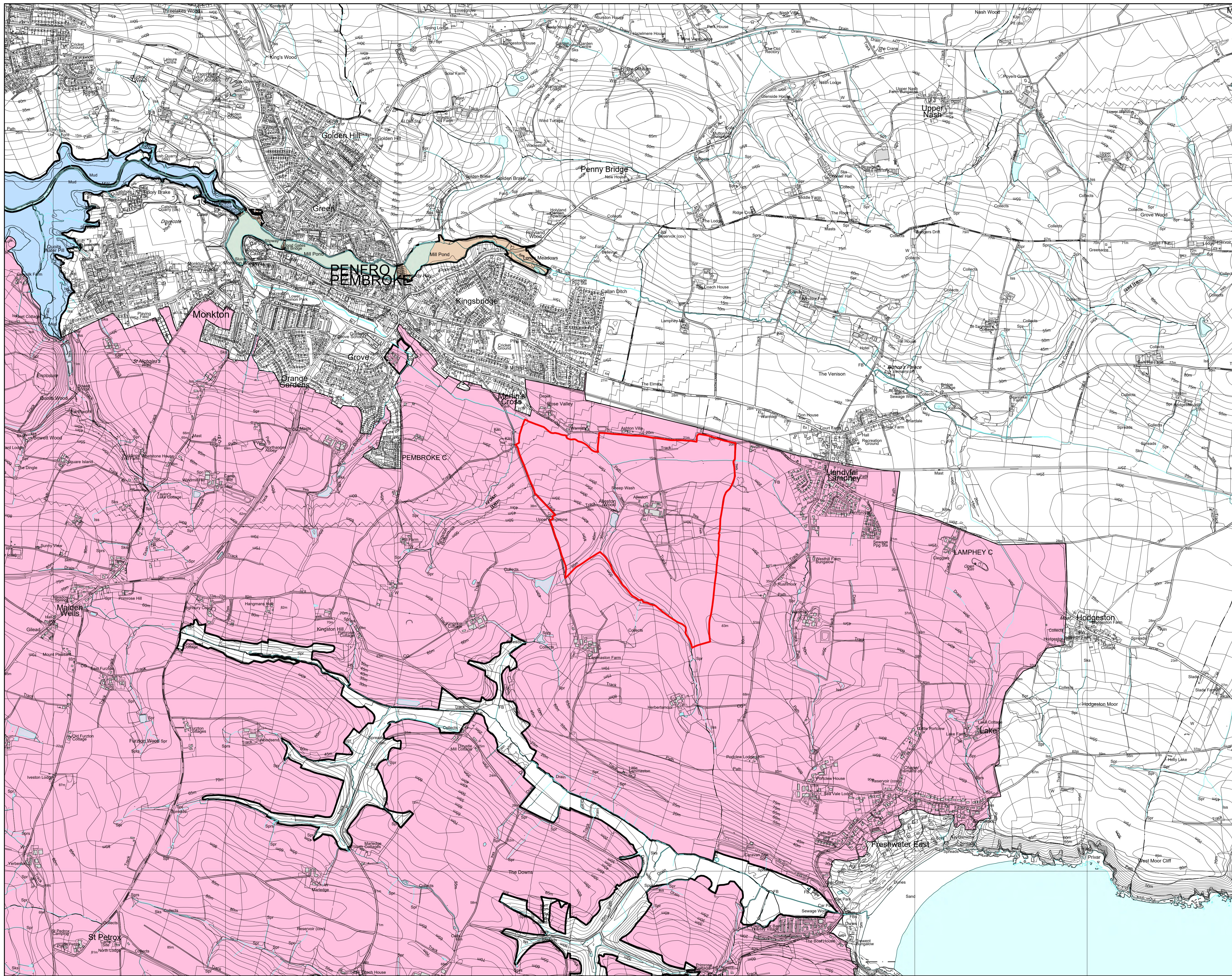
---

**Figure 7.7 – Landscape Habitats Land Map**

**LEGEND**

-  Site Boundary
-  Existing Water Courses and Features ^
-  Contours/Spot Heights (Metres AOD) ^
- LANDMAP Landscape Habitats #**
-  PMBRKLH549: Pembroke River Pill, Pembrokeshire
-  PMBRKLH586: Pembroke Mill Pond, Pembrokeshire
-  PMBRKLH608: N. of Castlemartin, Pembrokeshire \*\*

NOTE:  
 \*\* Indicates the LANDMAP aspect areas that overlap to the Site boundary.  
 Sources:  
 # OS Mapping  
 # Natural Resource Wales GIS Data Set  
 Data collected for constraints and analysis mapping is based on publicly available sources at the time of preparation. Inevitably, using the British National Grid and may itself not be accurate. Stantec shall not be liable for the accuracy of data derived from external sources.



**FIGURE 7.7**

Project  
**Alleston Clean Energy**

Drawing Title  
**LANDMAP:  
 Landscape Habitats**

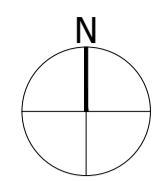
Date	Scale	Drawn by	Check by
03.10.2023	1:10,000 @A1 1:20,000 @A3	GS	FS
Project No	Drawing No	Revision	
333100437	LN-LP-07	A	




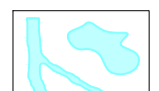


Stantec UK Limited  
 10th Floor  
 Bank House  
 8 Cherry Street  
 Birmingham  
 B2 5AL  
 T: 0121 633 2900  
 stantec.com/uk

---

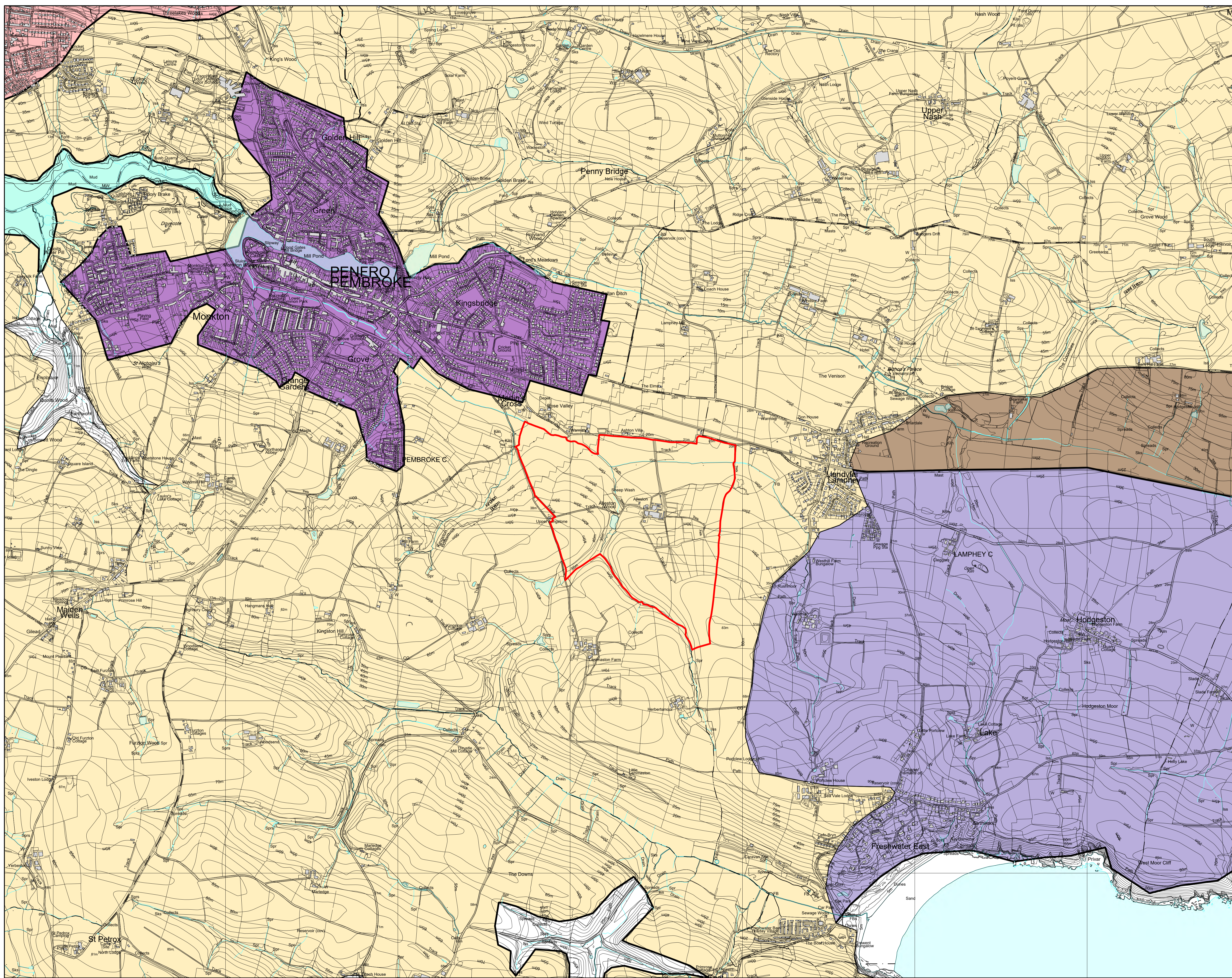
**Figure 7.8 – Cultural Landscape Services Land Map**



**LEGEND**

-  Site Boundary
-  Existing Water Courses and Features ^
-  Contours/Spot Heights (Metres AOD) ^
- LANDMAP Cultural Landscape Services #**
-  PMBRKCLS119: The Ridgeway, Pembrokeshire
-  PMBRKCLS120: Manorbier, Pembrokeshire
-  PMBRKCLS122: Castlemartin, Pembrokeshire \*\*
-  PMBRKCLS127: Pembroke, Pembrokeshire
-  PMBRKCLS128: Pembroke Dock, Pembrokeshire
-  PMBRKCLS201: Estuarine Mud, Pembrokeshire

NOTE:  
 \*\* Indicates the LANDMAP aspect areas that overlap to the Site boundary.  
 Sources:  
 # OS Mapping  
 # Natural Resource Wales GIS Data Set  
 Data collected for constraints and analysis mapping is based on publicly available sources at the time of preparation. Inset using the British National Grid and may itself not be accurate. Stantec shall not be liable for the accuracy of data derived from external sources.



**FIGURE 7.8**  
 Project: Allestion Clean Energy

Drawing Title: **Cultural Landscape Services**  
 Date: 03.10.2023 Scale: 1:10,000 @A1, 1:20,000 @A3  
 Project No: 333100437 Drawing No: LN-LP-08  
 Drawn by: GS Check by: FS  
 Revision: A



Stantec UK Limited  
 10th Floor  
 Bank House  
 8 Cherry Street  
 Birmingham  
 B2 5AL  
 T: 0121 633 2900  
 stantec.com.uk

---

**Figure 7.9 – Visual & Sensory Land Map**