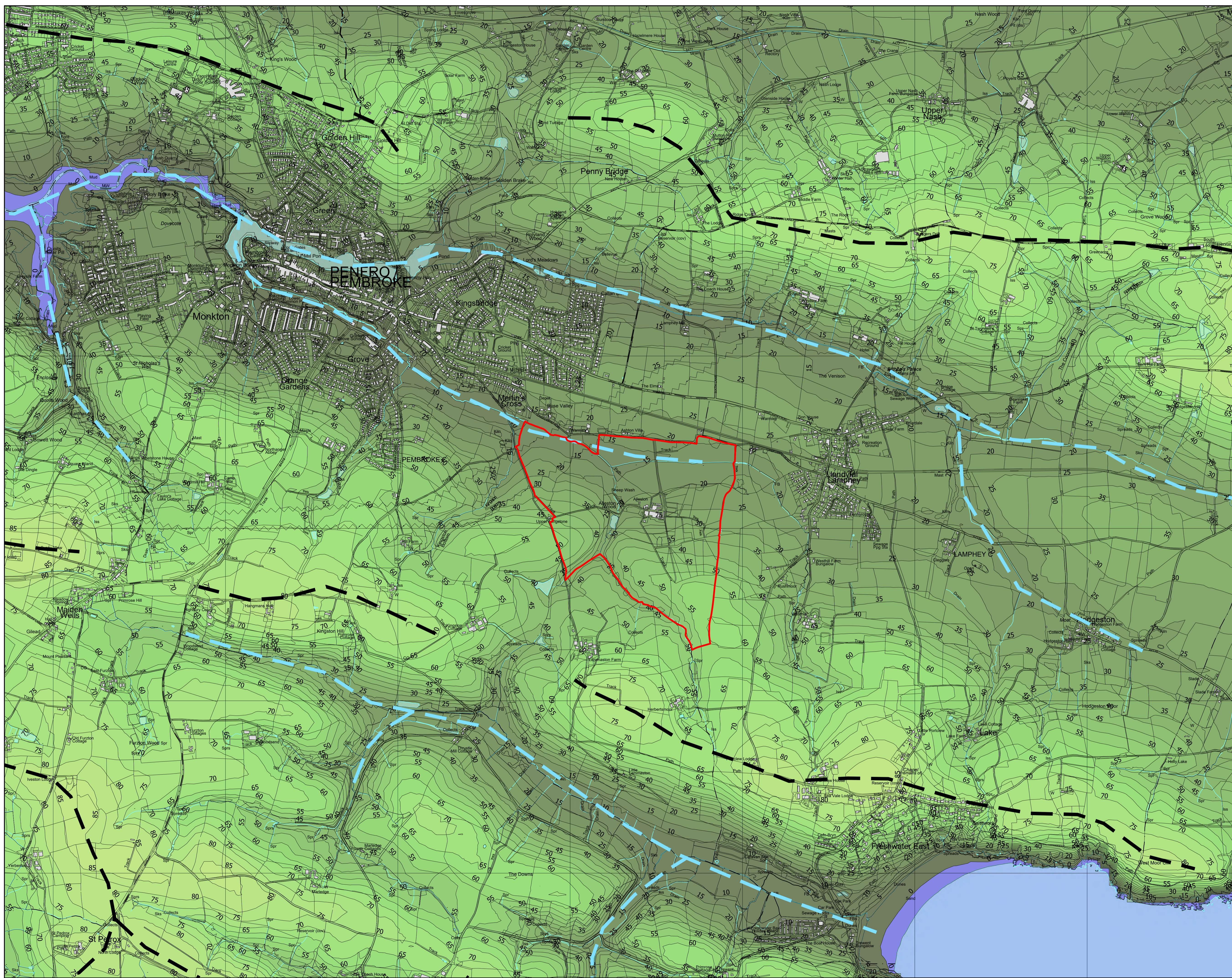
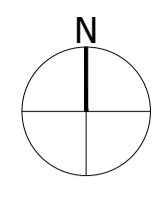


LEGEND

Site Boundary
 Existing Water Courses and Features ^
 Ridgelines
 Valleys
 Contours/Spot Heights (Metres AOD) ^
 110m +
Elevation (Metres AOD) ^
 85 to 90
 80 to 85
 75 to 80
 70 to 75
 65 to 70
 60 to 65
 55 to 60
 50 to 55
 45 to 50
 40 to 45
 35 to 40
 30 to 35
 25 to 30
 20 to 25
 15 to 20
 10 to 15
 5 to 10
 0 to 5
 -5 to 0
 -10 to -5



Sources: ^ OS Mapping
 Data collected for constraints and analysis mapping is based on publicly available sources at the time of preparation inserted using the British National Grid and may itself not be accurate. Stantec shall not be liable for the accuracy of data derived from external sources.

FIGURE 7.2

Project
Allestree Clean Energy

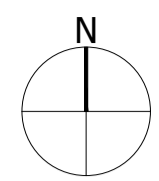
Drawing Title
Topographical Features Plan

Date	Scale	Drawn by	Check by
03.10.2023	1:10,000 @A1 1:20,000 @A3	GS	FS
Project No	Drawing No	Revision	
333100437	LN-LP-02	A	



Stantec UK Limited
 10th Floor
 Bank House
 8 Cherry Street
 Birmingham
 B2 5AL
 T: 0121 633 2900
 stantec.com/uk

Figure 7.3 – Landscape Character Plan

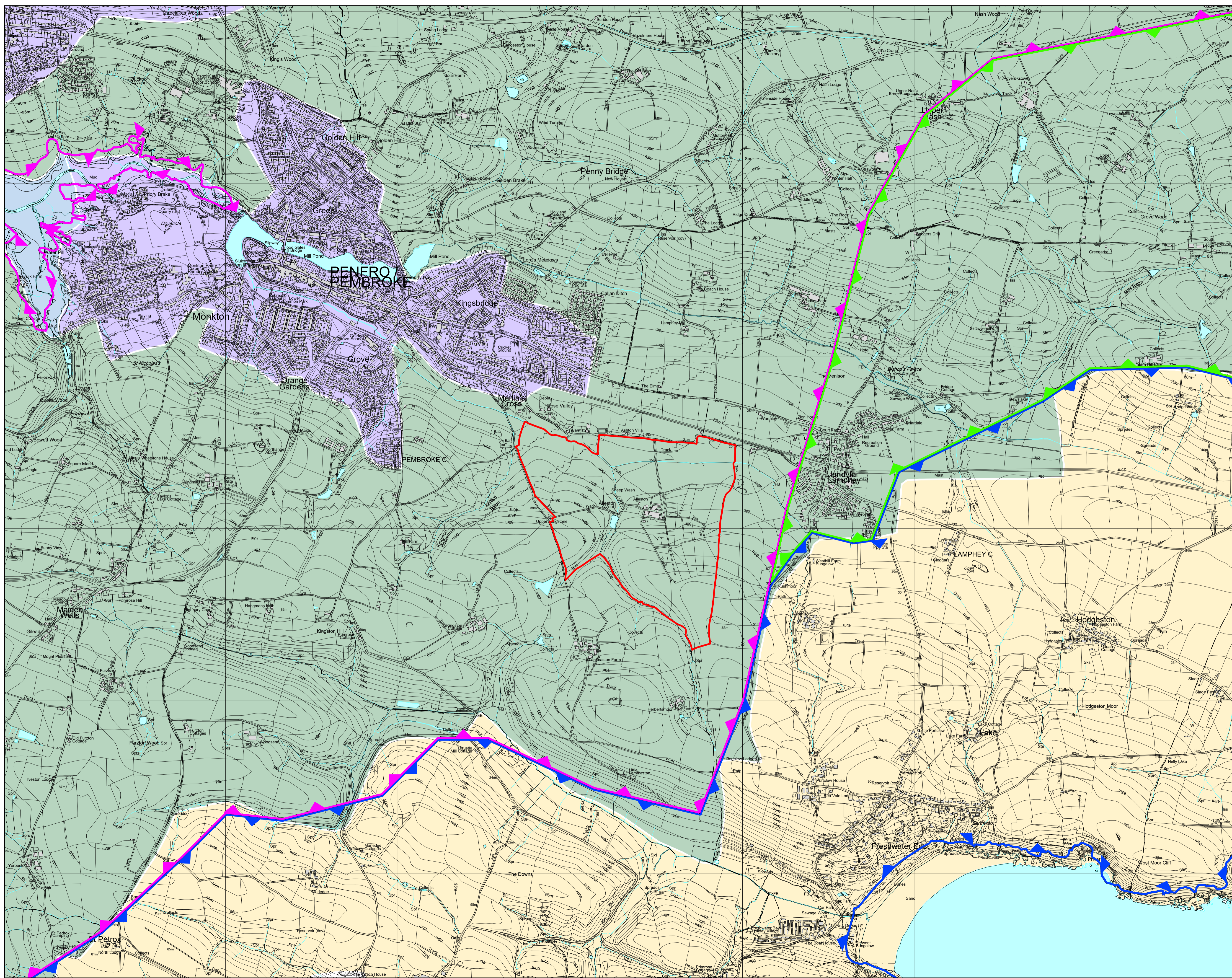


LEGEND

- Site Boundary
- Existing Water Courses and Features ^
- Contours/Spot Heights (Metres AOD) ^
- National Landscape Character Areas (NLCA) #
 - NLCA 44: Taf and Claddau Vales
 - NLCA 47: South Pembrokeshire Coast
 - NLCA 48: Milford Haven
- Pembrokeshire Landscape Character Areas ~~~
 - 16: Southern Haven Developed
 - 24: Southern Haven Mudflats
 - 25: Hundleton and Lamphey
- Pembrokeshire Coast National Park Landscape Character Areas ~~~
 - 4: Manorbier Freshwater East

Sources:
 ^ OS Mapping
 # Natural Resource Wales GIS Data Set
 ~~~ Pembrokeshire County Landscape Character Assessment, LDP Supplementary Planning Guidance Consultation Document, May 2022

Data collected for constraints and analysis mapping is based on publicly available sources at the time of preparation. Inertial using the British National Grid and may itself not be accurate. Stantec shall not be liable for the accuracy of data derived from external sources.



**FIGURE 7.3**

Project  
**Alleston Clean Energy**

Drawing Title  
**Landscape Character Plan**

|                         |                                       |                |                |
|-------------------------|---------------------------------------|----------------|----------------|
| Date<br>03.10.2023      | Scale<br>1:10,000 @A1<br>1:20,000 @A3 | Drawn by<br>GS | Check by<br>FS |
| Project No<br>333100437 | Drawing No<br>LN-LP-03                | Revision<br>A  |                |



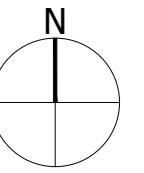
Stantec UK Limited  
 10th Floor  
 Bank House  
 8 Cherry Street  
 Birmingham  
 B2 5AL  
 T: 0121 633 2900  
 stantec.com/uk

---


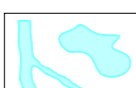


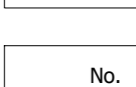
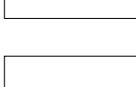


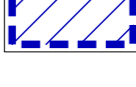
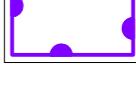
**Figure 7.4 – Site Appraisal Plan**

The scaling of this drawing cannot be assured

Revision A Redline Revision Date 06.11.23 Drn EJ Ckd FS

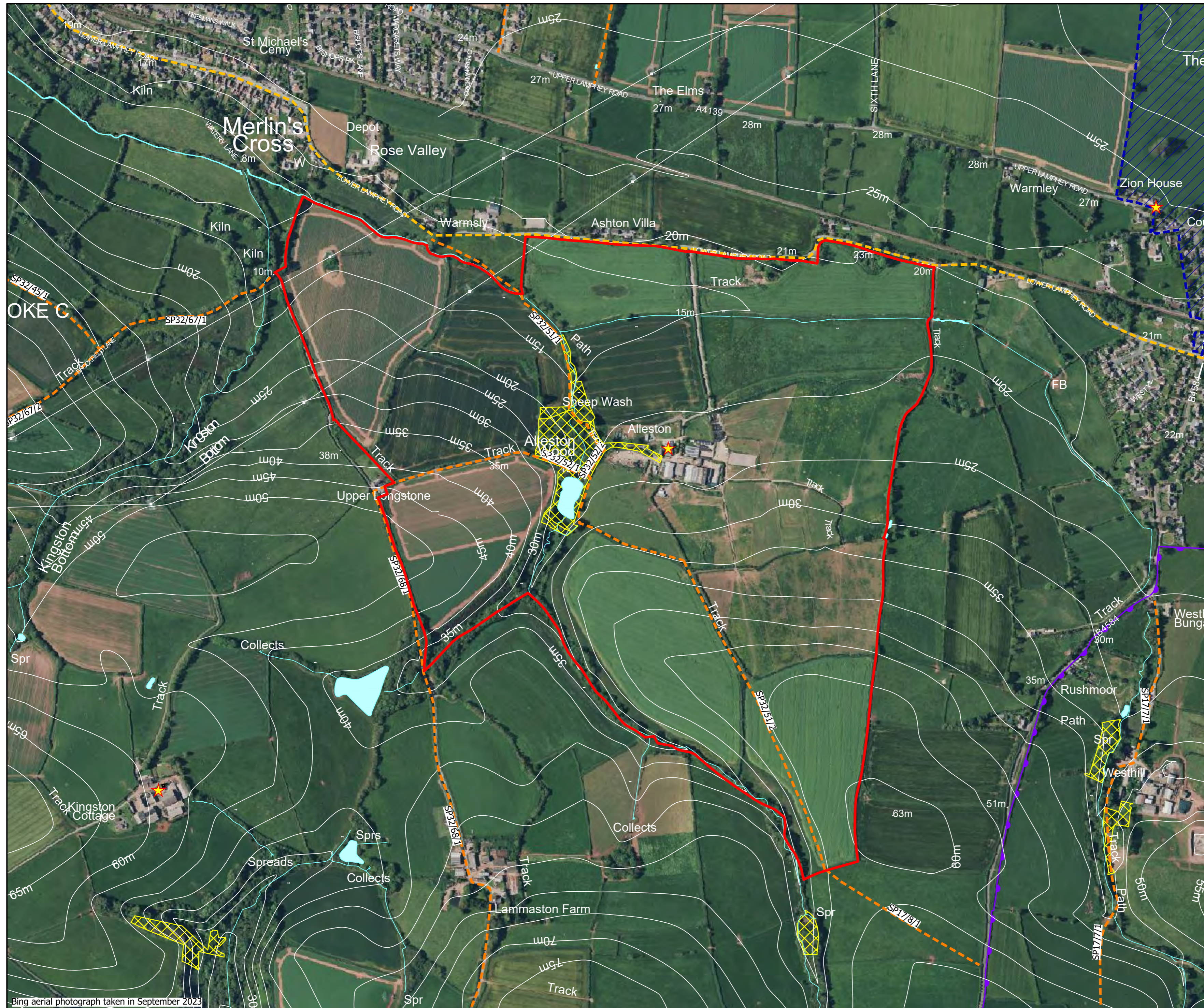


### LEGEND

-  Site Boundary
-  Existing Water Courses and Features ^
-  Contours/Spot Heights (Metres AOD) ^
-  Pylons/Electric Overhead Cable ^
-  Public Rights of Way \*
-  Sustrans Cycle Route +
-  Listed Buildings ~
-  Conservation Area ~
-  National Parks #
-  Ancient Woodland #

Sources:  
 ^ OS Mapping  
 # Natural Resource Wales GIS Data Set  
 ~ Cadw GIS Database  
 \* Pembrokeshire County Council GIS Data  
 + Sustrans National Cycle Network GIS Data

Data collated for constraints and analysis mapping is based on publicly available sources at the time of preparation inserted using the British National Grid and may itself not be accurate. Stantec shall not be liable for the accuracy of data derived from external sources.



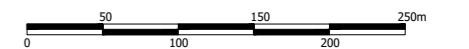
## FIGURE 7.4

Project  
Alleston Clean Energy

Drawing Title  
Site Appraisal Plan

|            |             |          |          |
|------------|-------------|----------|----------|
| Date       | Scale       | Drawn by | Check by |
| 03.10.2023 | 1:5,000 @A2 | GS       | FS       |

|            |            |          |
|------------|------------|----------|
| Project No | Drawing No | Revision |
| 333100437  | LN-LP-04   | A        |



Stantec UK Limited  
 10th Floor  
 Bank House  
 8 Cherry Street  
 Birmingham  
 B2 5AL  
 T: 0121 633 2900



stantec.com\uk

---

**Figure 7.5 – Zone of Theoretical Visibility Plan**