

PROJECT
RED JOHN PUMPED STORAGE HYDRO

CLIENT
ILI (Highlands PSH) Ltd.

KEY

- Development Site boundary
- Above ground infrastructure - 250m buffer
- Above ground infrastructure - Line
- Above ground infrastructure - Area
- NVC areas

NOTE:
Colour codes are Phase 1 habitats and are given to aid readability. A key to Phase 1 habitat colour codes is given on Figure 6.8 of the EIA.

Areas of road, other hard-standing, bare ground and buildings are left blank. The south-east extension of the buffer along the road is not covered, because works along this road are expected to comprise only resurfacing and other superficial works.

NVC codes are alphanumeric. The initial capital letter(s) and number denote the NVC community, and any lower case letter the sub-community. The initial letter(s) represent broad vegetation types:

- W = Woodland (includes woodland proper and scrub)
- M = Mire (includes bog, wet heath and flush)
- H = Heath (dry heath)
- MG = Mesotrophic Grassland (neutral grassland)
- U = Upland (includes acid grassland and bracken)
- S = Swamp
- A = Aquatic vegetation
- OV = Open Vegetation (includes stands of weeds)

Where vegetation does not correspond to a published NVC community, a very brief description is given (e.g. 'Conifer plantation'; 'Open water'; 'Quarry'). Note that if conifer plantation is Scots pine and it has a heathy ground flora then it does constitute an NVC type (W18).

Multiple NVC types are listed if a polygon is a mosaic. The numbers following the NVC types indicate estimated percentage proportions of the mosaic components.

The NVC types are described in Appendix 6.1.

TITLE
FIGURE 6.9
NATIONAL VEGETATION CLASSIFICATION

REFERENCE
RJ_181031_EIA_6.9_v1

SHEET NUMBER 1 of 5 **DATE** 31/10/18

This drawing has been produced for the use of AECOM's client. It may not be used, modified or relied upon by third parties, except as agreed by AECOM or as required by law. AECOM accepts no responsibility, and denies any liability whatsoever, to any party that uses or relies upon this drawing without AECOM's express written consent. All dimensions are indicative and in metres unless otherwise noted. Do not scale this document.

KEY

	Development Site boundary
	Excluded from Development Site boundary
	Above ground infrastructure - 250m buffer
	Above ground infrastructure - Line
	Above ground infrastructure - Area
	NVC areas

NOTE:
Colour codes are Phase 1 habitats and are given to aid readability. A key to Phase 1 habitat colour codes is given on Figure 6.8 of the EIA.

Areas of road, other hard-standing, bare ground and buildings are left blank. The south-east extension of the buffer along the road is not covered, because works along this road are expected to comprise only resurfacing and other superficial works.

NVC codes are alphanumeric. The initial capital letter(s) and number denote the NVC community, and any lower case letter the sub-community. The initial letter(s) represent broad vegetation types:
 W = Woodland (includes woodland proper and scrub)
 M = Mire (includes bog, wet heath and flush)
 H = Heath (dry heath)
 MG = Mesotrophic Grassland (neutral grassland)
 U = Upland (includes acid grassland and bracken)
 S = Swamp
 A = Aquatic vegetation
 OV = Open Vegetation (includes stands of weeds)

Where vegetation does not correspond to a published NVC community, a very brief description is given (e.g. 'Conifer plantation'; 'Open water'; 'Quarry'). Note that if conifer plantation is Scots pine and it has a heathy ground flora then it does constitute an NVC type (W18).

Multiple NVC types are listed if a polygon is a mosaic. The numbers following the NVC types indicate estimated percentage proportions of the mosaic components.

The NVC types are described in Appendix 6.1.

TITLE
FIGURE 6.9
NATIONAL VEGETATION CLASSIFICATION

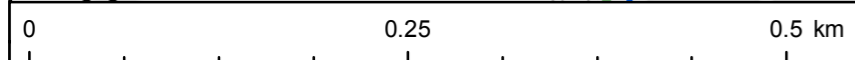
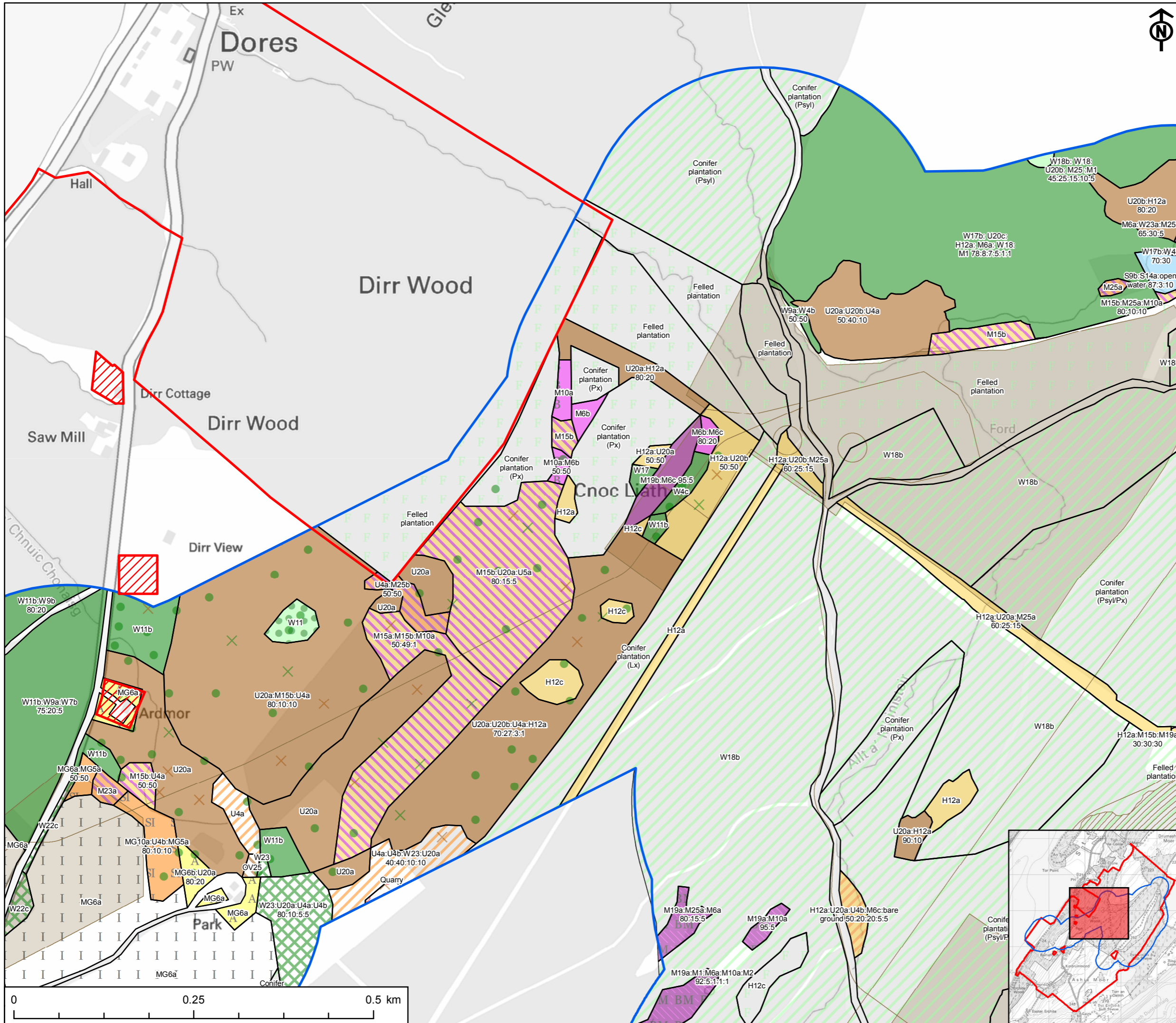
REFERENCE
RJ_181031_EIA_6.9_v1

SHEET NUMBER
2 of 5

DATE
31/10/18

Project Management Initials: CA Designer: LC Checked: SY Approved: CS

Scale @ A3 1:5,000



This drawing has been produced for the use of AECOM's client. It may not be used, modified or relied upon by third parties, except as agreed by AECOM or as required by law. AECOM accepts no responsibility, and denies any liability whatsoever, to any party that uses or relies upon this drawing without AECOM's express written consent. All dimensions are indicative and in metres unless otherwise noted. Do not scale this document.

PROJECT
RED JOHN PUMPED STORAGE HYDRO

CLIENT
ILI (Highlands PSH) Ltd.

KEY

- Development Site boundary
- Excluded from Development Site boundary
- Above ground infrastructure - 250m buffer
- Above ground infrastructure - Line
- Above ground infrastructure - Area
- NVC areas

NOTE:
Colour codes are Phase 1 habitats and are given to aid readability. A key to Phase 1 habitat colour codes is given on Figure 6.8 of the EIA.

Areas of road, other hard-standing, bare ground and buildings are left blank. The south-east extension of the buffer along the road is not covered, because works along this road are expected to comprise only resurfacing and other superficial works.

NVC codes are alphanumeric. The initial capital letter(s) and number denote the NVC community, and any lower case letter the sub-community. The initial letter(s) represent broad vegetation types:

- W = Woodland (includes woodland proper and scrub)
- M = Mire (includes bog, wet heath and flush)
- H = Heath (dry heath)
- MG = Mesotrophic Grassland (neutral grassland)
- U = Upland (includes acid grassland and bracken)
- S = Swamp
- A = Aquatic vegetation
- OV = Open Vegetation (includes stands of weeds)

Where vegetation does not correspond to a published NVC community, a very brief description is given (e.g. 'Conifer plantation'; 'Open water'; 'Quarry'). Note that if conifer plantation is Scots pine and it has a heathy ground flora then it does constitute an NVC type (W18).

Multiple NVC types are listed if a polygon is a mosaic. The numbers following the NVC types indicate estimated percentage proportions of the mosaic components.

The NVC types are described in Appendix 6.1.

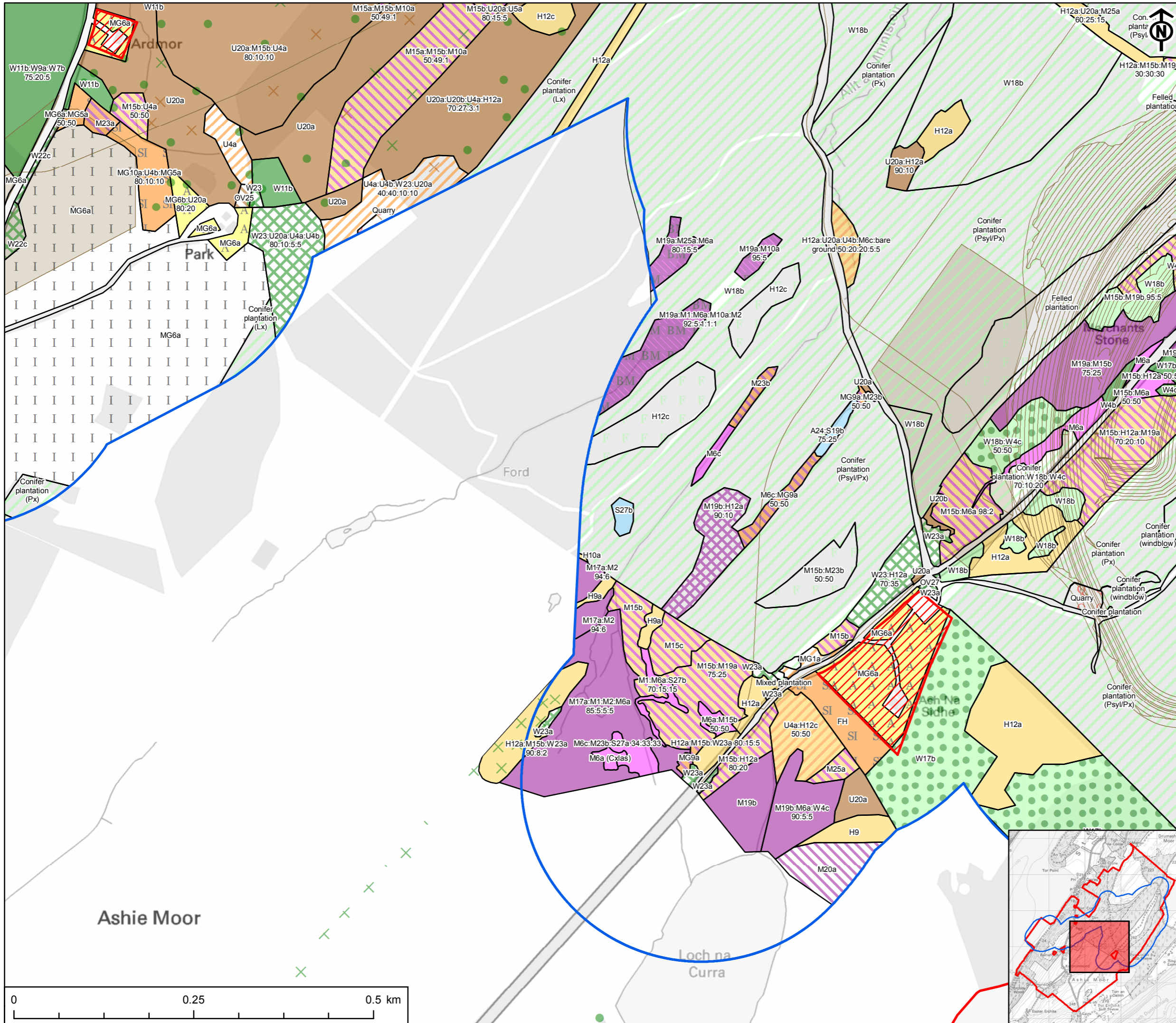
TITLE
FIGURE 6.9
NATIONAL VEGETATION CLASSIFICATION

REFERENCE
RJ_181031_EIA_6.9_v1

SHEET NUMBER 4 of 5 **DATE** 31/10/18

Project Management Initials: CA Designer: LC Checked: SY Approved: CS

Scale @ A3 1:5,000



This drawing has been produced for the use of AECOMs client. It may not be used, modified or relied upon by third parties, except as agreed by AECOM or as required by law. AECOM accepts no responsibility, and denies any liability whatsoever, to any party that uses or relies upon this drawing without AECOMs express written consent. All dimensions are indicative and in metres unless otherwise noted. Do not scale this document.

PROJECT
RED JOHN PUMPED STORAGE HYDRO

CLIENT
ILI (Highlands PSH) Ltd.

- KEY
- Development Site boundary
 - Above ground infrastructure - 250m buffer
 - Above ground infrastructure - Line
 - Above ground infrastructure - Area
 - NVC areas

NOTE:
Colour codes are Phase 1 habitats and are given to aid readability. A key to Phase 1 habitat colour codes is given on Figure 6.8 of the EIA.

Areas of road, other hard-standing, bare ground and buildings are left blank. The south-east extension of the buffer along the road is not covered, because works along this road are expected to comprise only resurfacing and other superficial works.

NVC codes are alphanumeric. The initial capital letter(s) and number denote the NVC community, and any lower case letter the sub-community. The initial letter(s) represent broad vegetation types:
 W = Woodland (includes woodland proper and scrub)
 M = Mire (includes bog, wet heath and flush)
 H = Heath (dry heath)
 MG = Mesotrophic Grassland (neutral grassland)
 U = Upland (includes acid grassland and bracken)
 S = Swamp
 A = Aquatic vegetation
 OV = Open Vegetation (includes stands of weeds)

Where vegetation does not correspond to a published NVC community, a very brief description is given (e.g. 'Conifer plantation'; 'Open water'; 'Quarry'). Note that if conifer plantation is Scots pine and it has a heathy ground flora then it does constitute an NVC type (W18).

Multiple NVC types are listed if a polygon is a mosaic. The numbers following the NVC types indicate estimated percentage proportions of the mosaic components.

The NVC types are described in Appendix 6.1.

TITLE
FIGURE 6.9
NATIONAL VEGETATION CLASSIFICATION

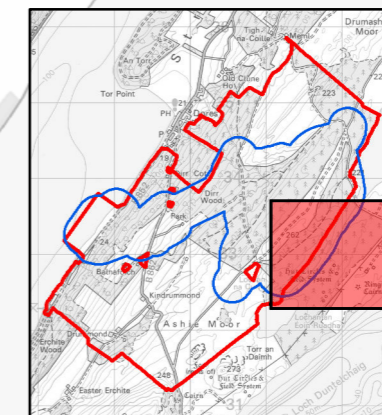
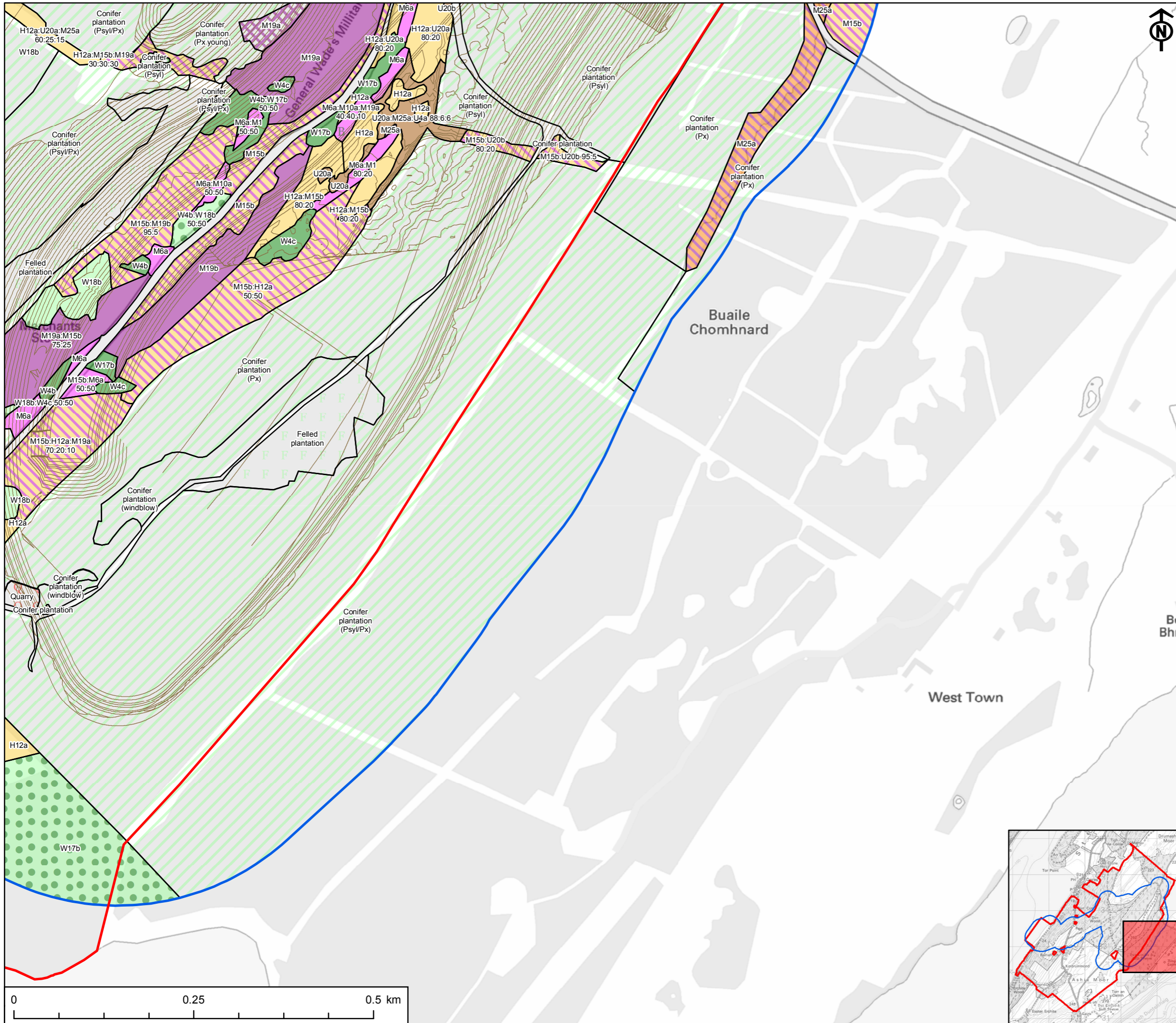
REFERENCE
RJ_181031_EIA_6.9_v1

SHEET NUMBER
5 of 5

DATE
31/10/18

Project Management Initials: CA Designer: LC Checked: SY Approved: CS

Scale @ A3 1:5,000



This drawing has been produced for the use of AECOM's client. It may not be used, modified or relied upon by third parties, except as agreed by AECOM or as required by law. AECOM accepts no responsibility, and denies any liability whatsoever, to any party that uses or relies upon this drawing without AECOM's express written consent. All dimensions are indicative and in metres unless otherwise noted. Do not scale this document.