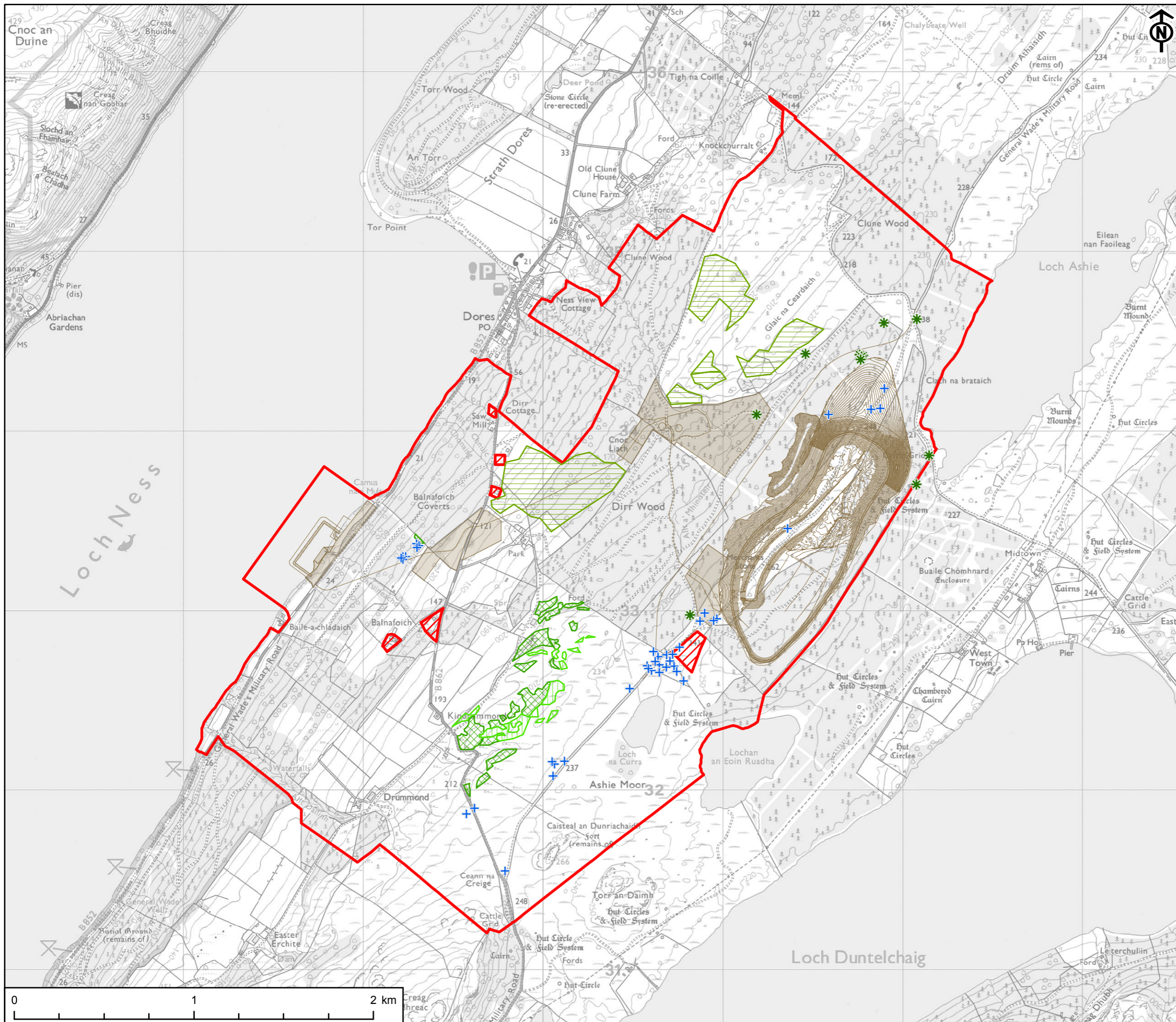


- KEY
- Development Site boundary
 - Excluded from Development Site boundary
 - Above ground infrastructure - Line
 - Above ground infrastructure - Area
 - Veteran Scots pine (very large with irregular branching, retained within existing plantation)
 - Individual or small groups of scattered Juniper bushes
 - Dense scrub including juniper (gorse usually dominant)
 - Scattered scrub including juniper
 - Widely scattered scrub including juniper

Project Management Initials: CA Designer: LC Checked: SY Approved: CS



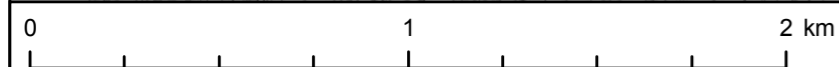
TITLE
FIGURE 6.11
MAIN JUNIPER LOCATIONS AND
VETERAN PINES

REFERENCE
RJ_181031_EIA_6.11_v1

SHEET NUMBER
1 of 1

DATE
31/10/18

Scale @ A3 1:20,000



This drawing has been produced for the use of AECOM's client. It may not be used, modified or relied upon by third parties, except as agreed by AECOM or as required by law. AECOM accepts no responsibility, and denies any liability whatsoever, to any party that uses or relies upon this drawing without AECOM's express written consent. All dimensions are indicative and in metres unless otherwise noted. Do not scale this document.