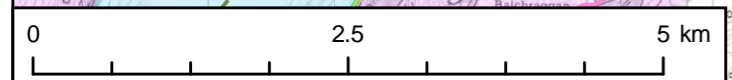
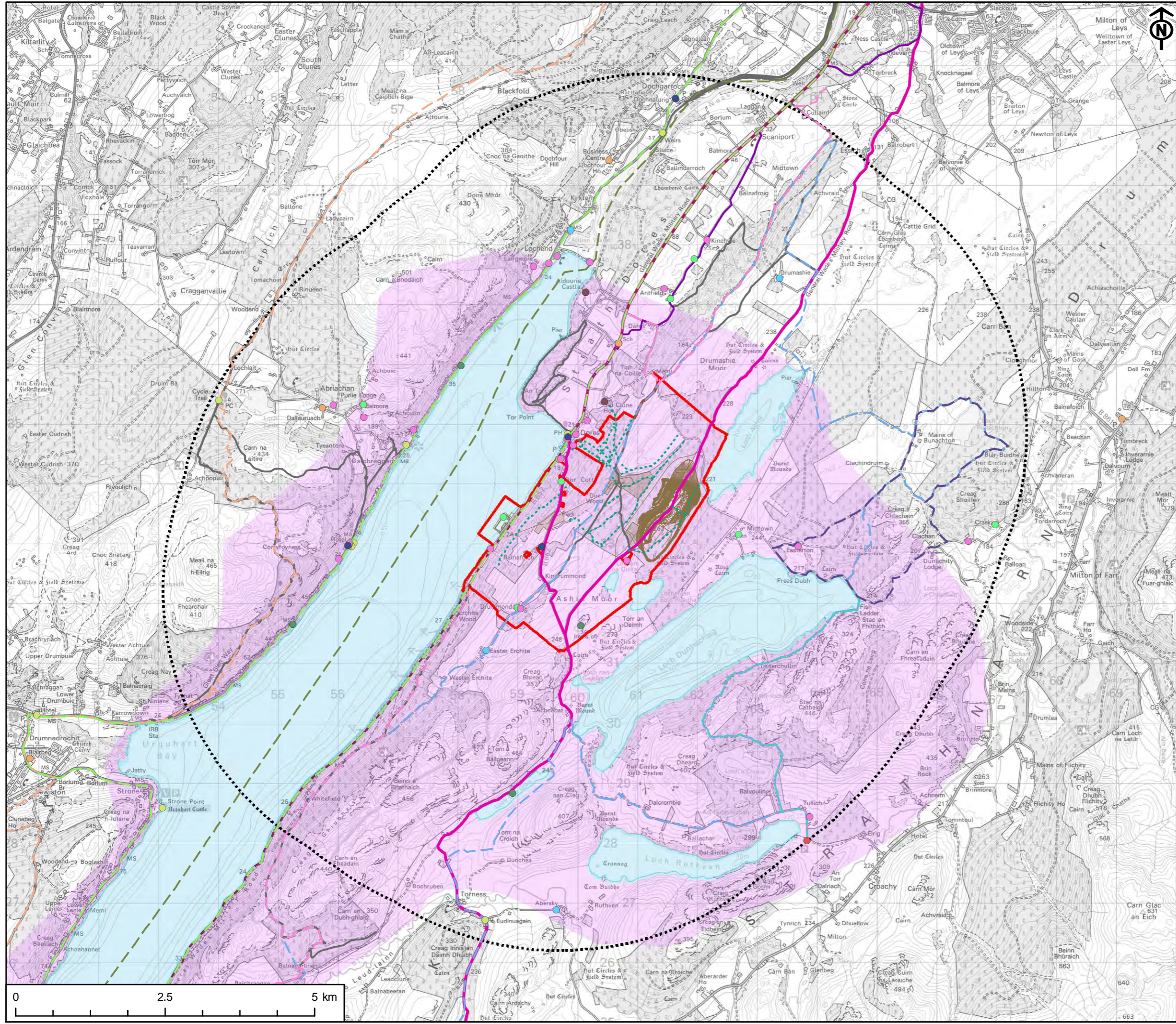


- KEY**
- Development Site boundary
 - Excluded from Development Site boundary
 - Development Site boundary - 5km buffer
 - Above ground infrastructure - Line
 - Above ground infrastructure - Area
- Socio-economic receptor**
- Accommodation
 - Business
 - Community
 - Farm
 - Food and drink
 - Local Events
 - Recreation
 - Scenic areas and natural reserves
 - Visitor Attraction
- Recreation**
- Local path
 - 3 Lochs Circuit
 - Etape Loch Ness
 - Great Glen Way
 - Loch Duntelchaig - Ruthven
 - Loch Ness Marathon
 - South Loch Ness Trail
 - The Great Glen Canoe Trail
 - Trail of Seven Lochs
 - Sustrans National Cycle Route 78
 - Core Path
 - Road cycling
- Water Features**
- Loch
 - Loch Ness and Duntelchaig SLA

Project Management Initials: CA Designer: LC Checked: SY Approved: CA

Scale @ A3 1:60,000

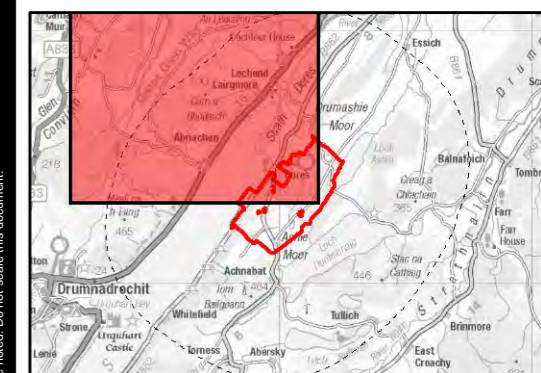


This drawing has been produced for the use of AECOM's client. It may not be used, modified or relied upon by third parties, except as agreed by AECOM or as required by law. AECOM accepts no responsibility, and denies any liability whatsoever, to any party that uses or relies upon this drawing without AECOM's express written consent. All dimensions are indicative and in metres unless otherwise noted. Do not scale this document.

PROJECT
RED JOHN PUMPED STORAGE HYDRO

CLIENT
ILI (Highlands PSH) Ltd.

- KEY**
- Development Site boundary
 - Excluded from Development Site boundary
 - Development Site boundary - 5km buffer
 - Above ground infrastructure - Line
 - Above ground infrastructure - Area
- Socio-economic receptor**
- Accommodation
 - Business
 - Community
 - Farm
 - Food and drink
 - Local Events
 - Recreation
 - Visitor Attraction
 - ⋯ Local path
 - Etape Loch Ness
 - Great Glen Way
 - Loch Ness Marathon
 - South Loch Ness Trail
 - The Great Glen Canoe Trail
 - Trail of Seven Lochs
 - Sustrans National Cycle Route 78
 - Core Path
 - Road cycling
 - Loch
 - Loch Ness and Duntelchaig SLA



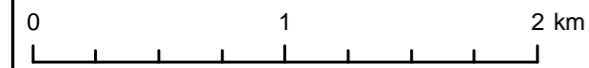
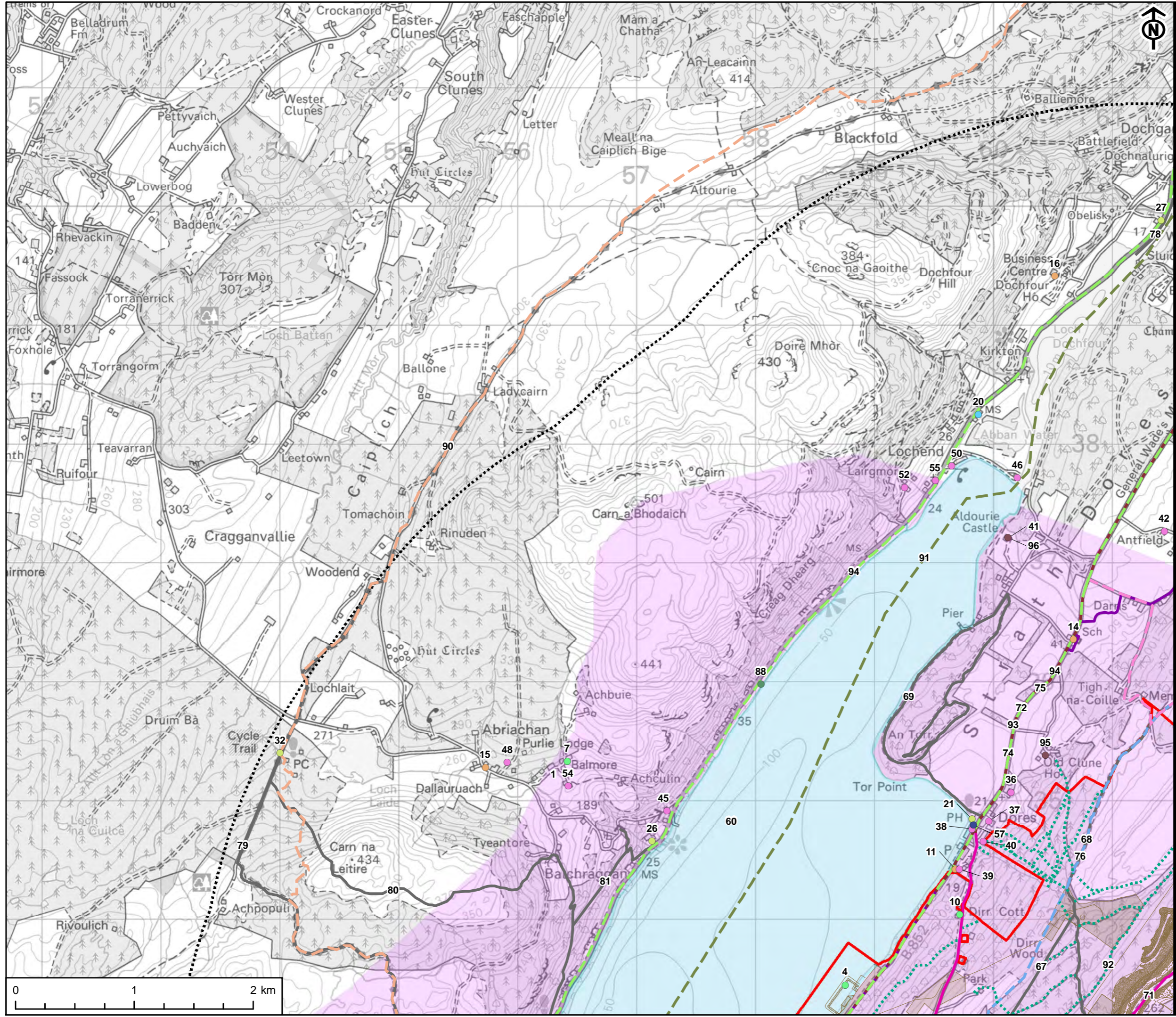
TITLE
FIGURE 14.1
SOCIO-ECONOMIC AND
TOURISM RECEPTORS

REFERENCE
RJ_181031_EIA_14.1_v1

SHEET NUMBER 2 of 5 **DATE** 31/10/18

Project Management Initials: CA Designer: LC Checked: SY Approved: CA

Scale @ A3 1:30,000

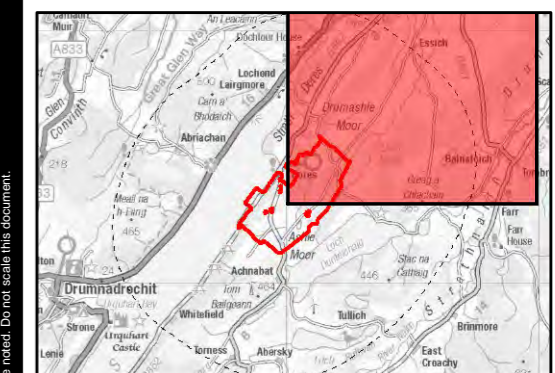


This drawing has been produced for the use of AECOMs client. It may not be used, modified or relied upon by third parties, except as agreed by AECOM or as required by law. AECOM accepts no responsibility, and denies any liability whatsoever, to any party that uses or relies upon this drawing without AECOMs express written consent. All dimensions are indicative and in metres unless otherwise noted. Do not scale this document.

PROJECT
RED JOHN PUMPED STORAGE HYDRO

CLIENT
ILI (Highlands PSH) Ltd.

- KEY**
- Development Site boundary
 - Development Site boundary - 5km buffer
 - Above ground infrastructure - Line
 - Above ground infrastructure - Area
- Socio-economic receptor**
- Accommodation
 - Business
 - Community
 - Farm
 - Food and drink
 - Local Events
 - Visitor Attraction
- Local path**
- Local path
 - 3 Lochs Circuit
 - Etape Loch Ness
 - Great Glen Way
 - Loch Ness Marathon
 - South Loch Ness Trail
 - The Great Glen Canoe Trail
 - Trail of Seven Lochs
 - Sustrans National Cycle Route 78
 - Core Path
 - Road cycling
 - Loch
 - Loch Ness and Duntelchaig SLA

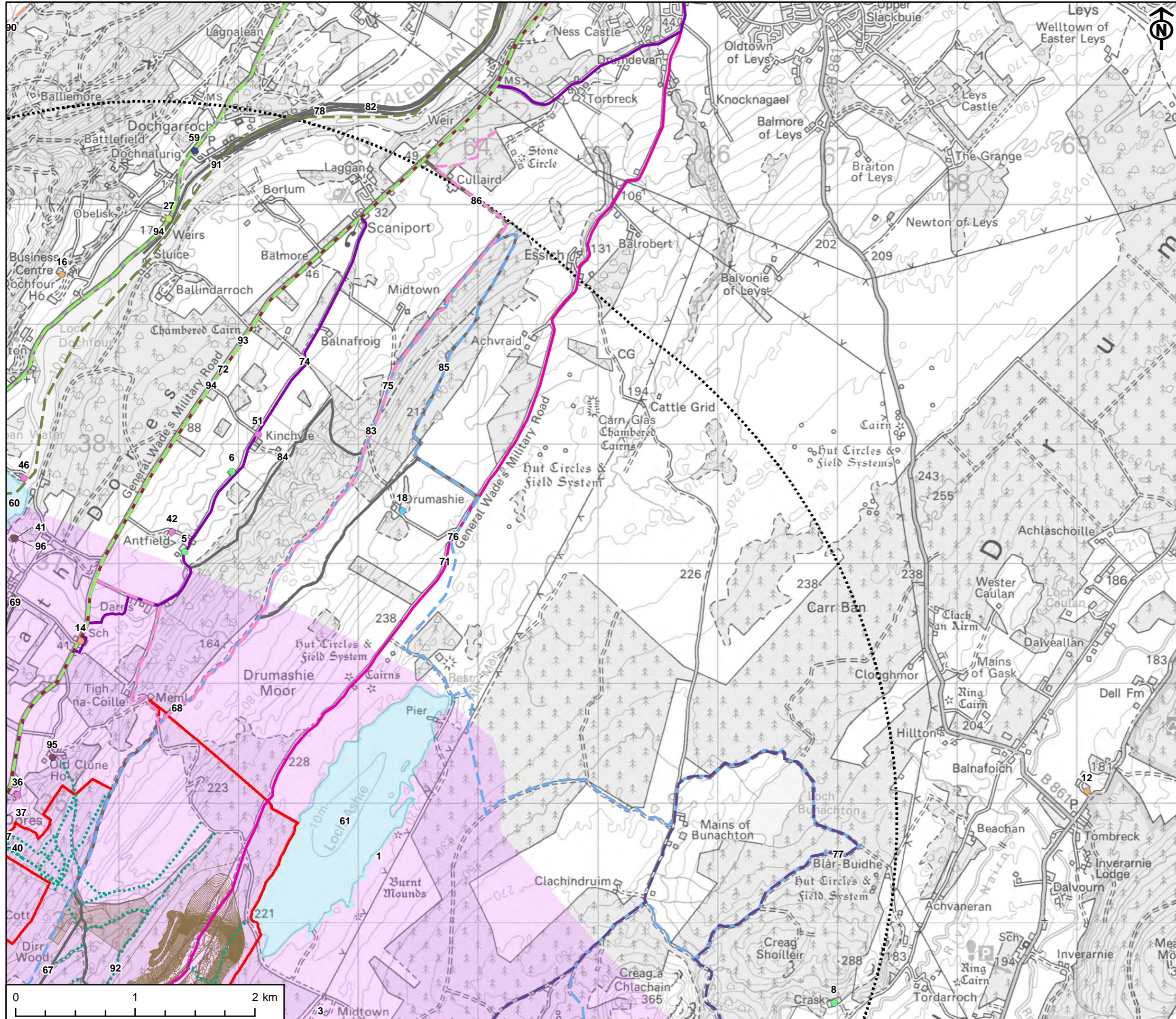


TITLE
FIGURE 14.1
SOCIO-ECONOMIC AND
TOURISM RECEPTORS

REFERENCE
RJ_181031_EIA_14.1_v1

SHEET NUMBER 3 of 5 **DATE** 31/10/18

Project Management Initials: CA Designer: LC Checked: SY Approved: CA Scale @ A3 1:30,000

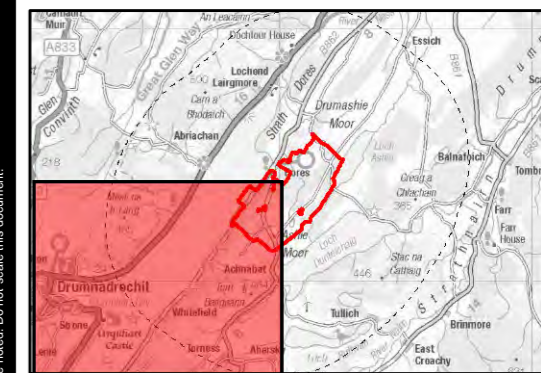
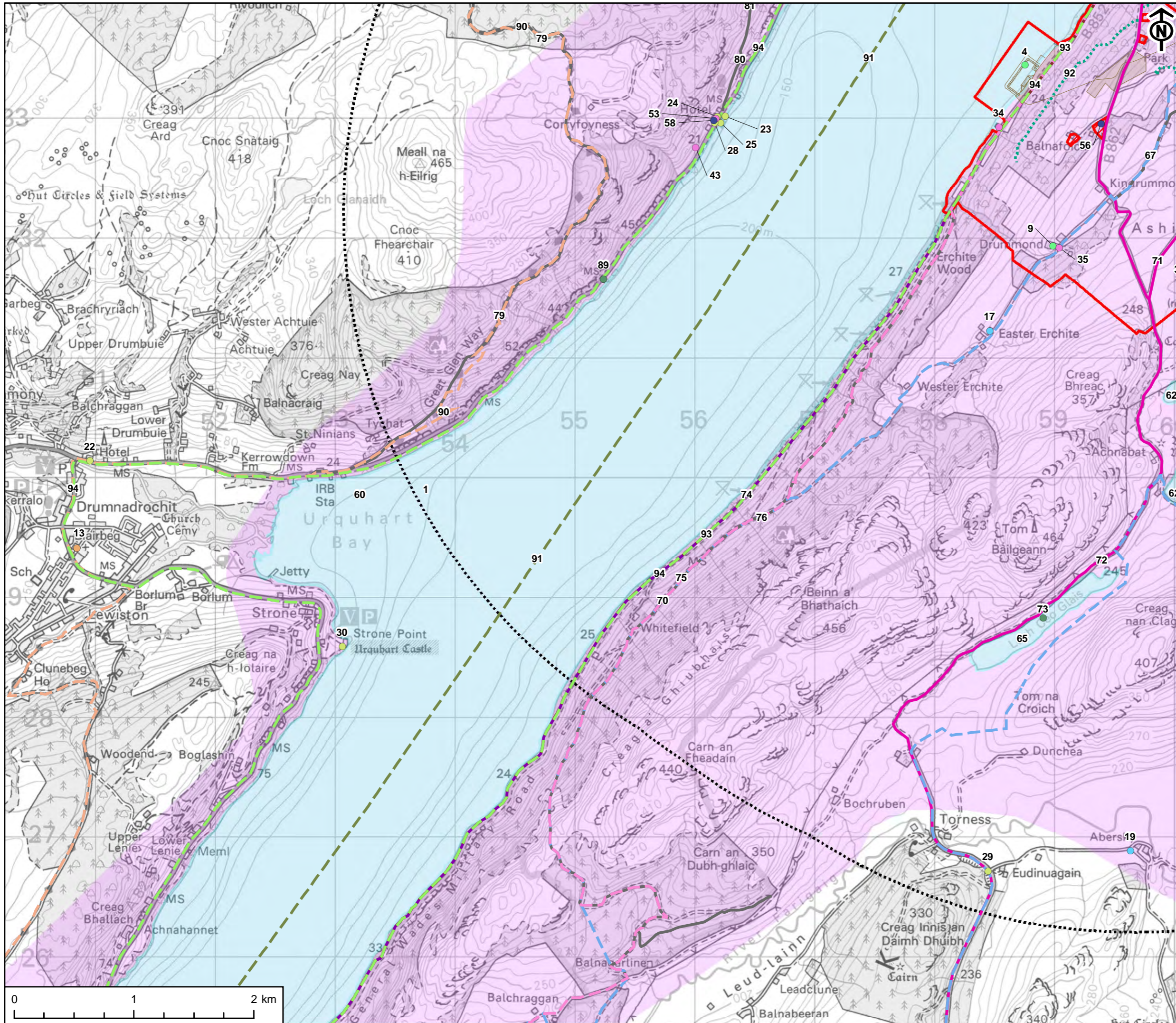


This drawing has been produced for the use of AECOM's client. It may not be used, modified or relied upon by third parties, except as agreed by AECOM or as required by law. AECOM accepts no responsibility, and denies any liability whatsoever, to any party that uses or relies upon this drawing without AECOM's express written consent. All dimensions are indicative and in metres unless otherwise noted. Do not scale this document.

PROJECT
RED JOHN PUMPED STORAGE HYDRO

CLIENT
ILI (Highlands PSH) Ltd.

- KEY**
- Development Site boundary
 - Excluded from Development Site boundary
 - Development Site boundary - 5km buffer
 - Above ground infrastructure - Line
 - Above ground infrastructure - Area
- Socio-economic receptor**
- Accommodation
 - Business
 - Community
 - Farm
 - Food and drink
 - Recreation
 - Visitor Attraction
- Other Features**
- Local path
 - Etape Loch Ness
 - Great Glen Way
 - Loch Ness Marathon
 - South Loch Ness Trail
 - The Great Glen Canoe Trail
 - Trail of Seven Lochs
 - Sustrans National Cycle Route 78
 - Core Path
 - Road cycling
 - Loch
 - Loch Ness and Duntelchaig SLA



TITLE
FIGURE 14.1
SOCIO-ECONOMIC AND
TOURISM RECEPTORS

REFERENCE
RJ_181031_EIA_14.1_v1

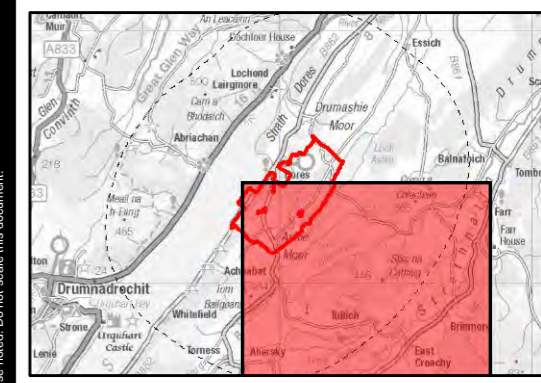
SHEET NUMBER 4 of 5
DATE 31/10/18

This drawing has been produced for the use of AECOM's client. It may not be used, modified or relied upon by third parties, except as agreed by AECOM or as required by law. AECOM accepts no responsibility, and denies any liability whatsoever, to any party that uses or relies upon this drawing without AECOM's express written consent. All dimensions are indicative and in metres unless otherwise stated. Do not scale this document.

PROJECT
RED JOHN PUMPED STORAGE HYDRO

CLIENT
ILI (Highlands PSH) Ltd.

- KEY**
- Development Site boundary
 - Excluded from Development Site boundary
 - Development Site boundary - 5km buffer
 - Above ground infrastructure - Line
 - Above ground infrastructure - Area
- Socio-economic receptor**
- Accommodation
 - Business
 - Farm
 - Food and drink
 - Recreation
 - Scenic areas and natural reserves
- Local path**
- - - 3 Lochs Circuit
 - - - Etape Loch Ness
 - - - Loch Duntelchaig - Ruthven
 - - - Loch Ness Marathon
 - - - South Loch Ness Trail
 - - - Trail of Seven Lochs
 - - - Sustrans National Cycle Route 78
 - - - Core Path
 - - - Road cycling
- Loch**
- Loch
 - Loch Ness and Duntelchaig SLA



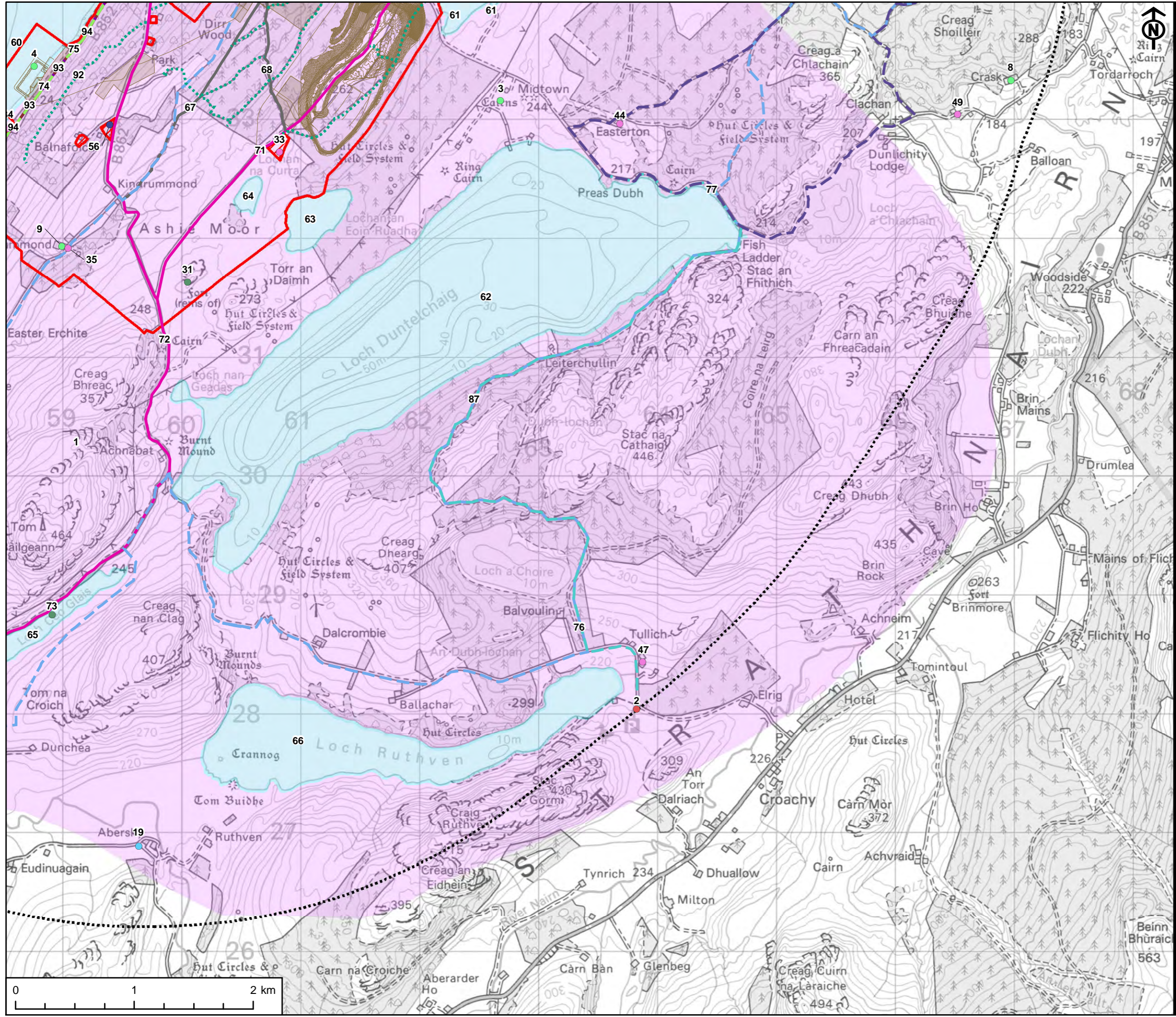
TITLE
FIGURE 14.1
SOCIO-ECONOMIC AND
TOURISM RECEPTORS

REFERENCE
RJ_181031_EIA_14.1_v1

SHEET NUMBER 5 of 5 **DATE** 31/10/18

Project Management Initials: CA Designer: LC Checked: SY Approved: CA

Scale @ A3 1:30,000



This drawing has been produced for the use of AECOM's client. It may not be used, modified or relied upon by third parties, except as agreed by AECOM or as required by law. AECOM accepts no responsibility, and denies any liability whatsoever, to any party that uses or relies upon this drawing without AECOM's express written consent. All dimensions are indicative and in metres unless otherwise noted. Do not scale this document.