

PROJECT
 RED JOHN PUMPED STORAGE HYDRO
CLIENT
 ILI (Highlands PSH) Ltd.
KEY

- Development Site Boundary
- BT Openreach
- Overhead SSE Power Cables
- Scottish Water Mains
- Area Excluded From Development Site Boundary

- NOTES**
1. All dimensions are indicative and in metres unless otherwise noted. Do not scale.
 2. All levels in metres and reduced to ordnance datum unless otherwise noted.
 3. Utilities data provided by Groundsure.

TITLE
 FIGURE 2.2
 UTILITIES

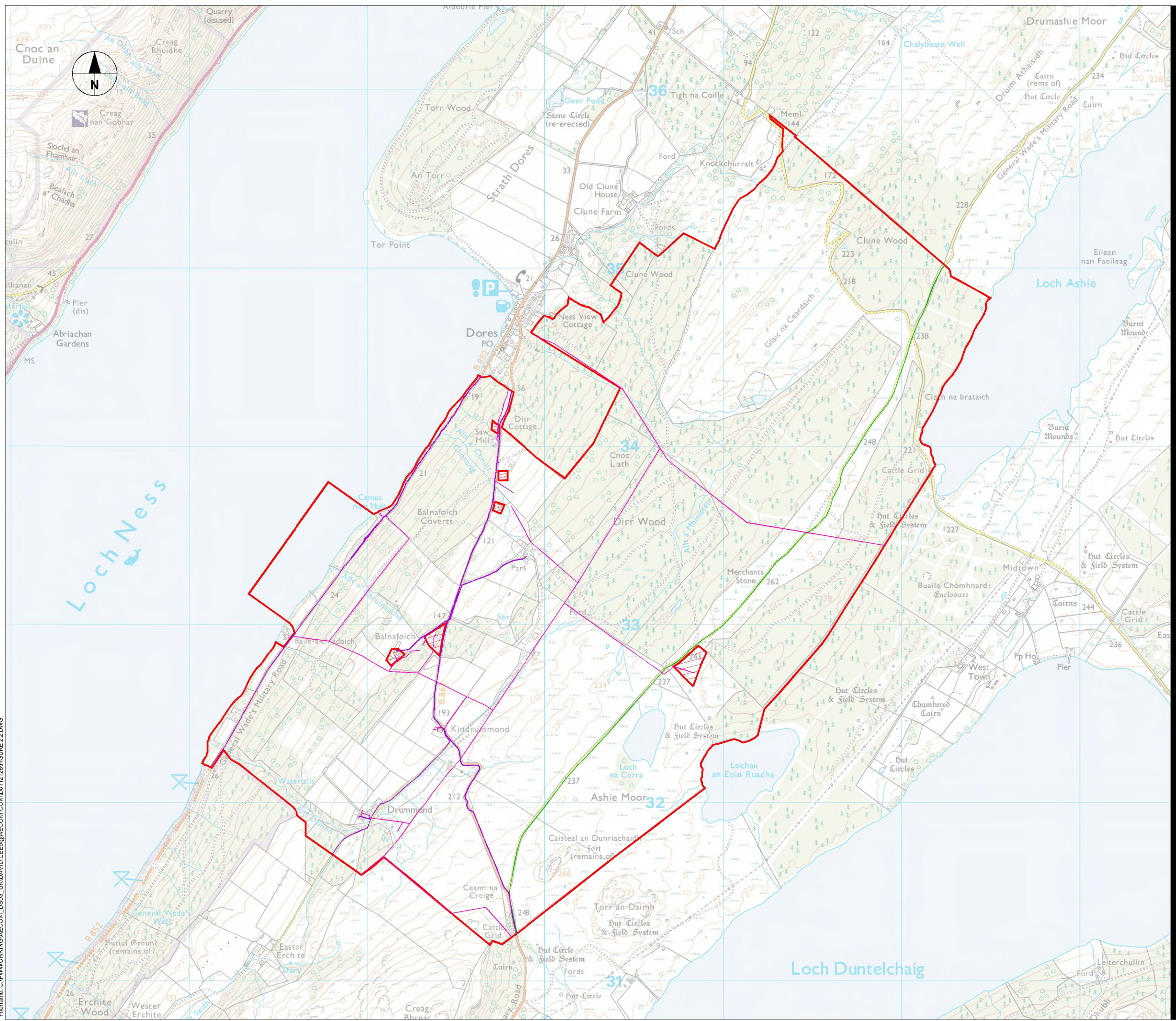
REFERENCE
 RJ_181004_EIA2.2_v1

SHEET NUMBER
 1 of 1

DATE
 04/10/18

Project Management Initials: CA Designer:AW Checked:DL Approved:CA

Last saved by: LEEDS(2018-10-26) Last Printed: 2018-11-01
 Filename: C:\P\WORKING\AECOM_DSO3_UK\DAVID_LEE@AECOM.COM\112128\Figure 2.2.DWG



This drawing has been prepared for the use of AECOM's client. It may not be used, modified, reproduced or relied upon by third parties, except as agreed by AECOM or as required by law. AECOM accepts no responsibility, and denies any liability whatsoever, to any party that uses or relies on this drawing without AECOM's express written consent. Do not scale this document. All measurements must be obtained from the stated dimensions.