

PROJECT  
RED JOHN PUMPED STORAGE HYDRO

CLIENT  
ILI (Highlands PSH) Ltd.

- KEY
- Development Site boundary
  - Excluded from Development Site boundary
  - Development Site boundary - 5km buffer
  - Above ground infrastructure (Operation) Line
  - Above ground infrastructure (Operation) Area
  - Highland Council Core Path
  - General Wade's Military Road
  - Great Glen Way
  - South Loch Ness Trail
  - The Great Glen Canoe Trail
  - Trail of Seven Lochs
  - Sustrans National Cycle Route 78
  - The Caledonia Way
  - Zone of Theoretical Visibility

TITLE  
FIGURE 11.5  
RECREATIONAL ROUTES AND CORE PATHS

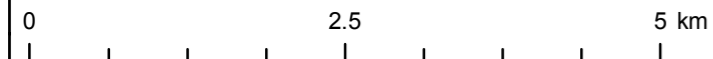
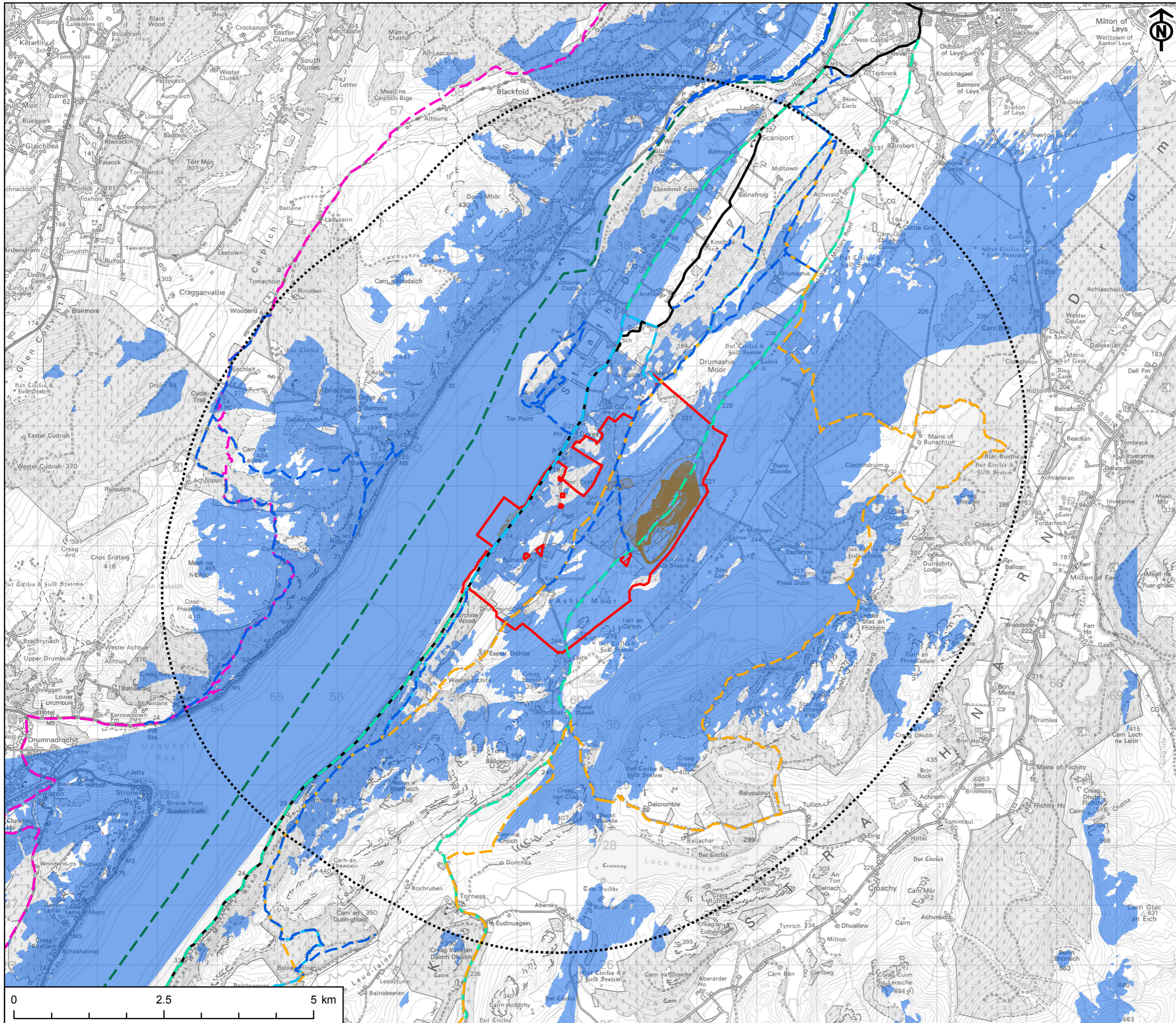
REFERENCE  
RJ\_181031\_EIA\_11.5\_v2

SHEET NUMBER  
1 of 1

DATE  
31/10/18

Project Management Initials: CA Designer: LC Checked: SY Approved: CA

Scale @ A3 1:60,000



This drawing has been produced for the use of AECOM's client. It may not be used, modified or relied upon by third parties, except as agreed by AECOM or as required by law. AECOM accepts no responsibility, and denies any liability whatsoever, to any party that uses or relies upon this drawing without AECOM's express written consent. All dimensions are indicative and in metres unless otherwise noted. Do not scale this document.