

PROJECT
RED JOHN PUMPED STORAGE HYDRO

CLIENT
ILI (Highlands PSH) Ltd.

- KEY**
- Development Site boundary
 - Excluded from Development Site boundary
 - Above ground infrastructure - Line
 - Above ground infrastructure - Area
- Peat Depth Interpolation (m)**
- 0.00 - 0.50
 - 0.51 - 1.00
 - 1.01 - 1.50
 - 1.51 - 2.00
 - 2.01 - 3.00
 - 3.01 - 4.00
 - 4.01 - 5.00

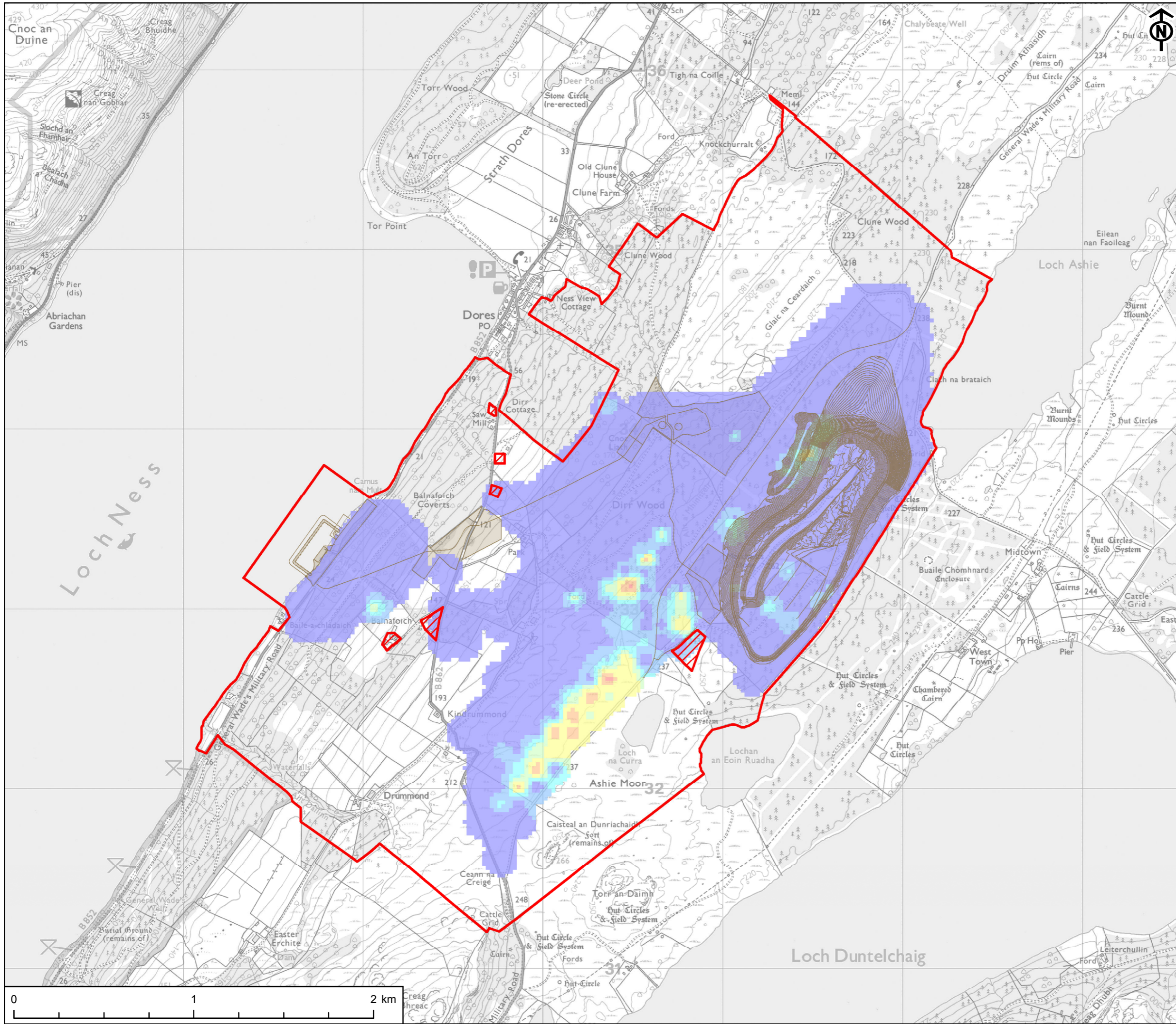
NOTE:
The peat depths are based on an interpolated peat surface, based on individual peat probes taken across the site (See EIA Figure 5.5).
The results are indicative only and should not be relied upon for detailed design or construction.

Peat Interpolation method used:
Inverse Distance Weighting

TITLE
FIGURE 5.6
PEAT DSURFACE

REFERENCE
RJ_181031_EIA_5.6_v1

SHEET NUMBER 1 of 1
DATE 31/10/18



This drawing has been produced for the use of AECOM's client. It may not be used, modified or relied upon by third parties, except as agreed by AECOM or as required by law. AECOM accepts no responsibility, and denies any liability whatsoever, to any party that uses or relies upon this drawing without AECOM's express written consent. All dimensions are indicative and in metres unless otherwise noted. Do not scale this document.

Project Management Initials: CA Designer: LC Checked: SY Approved: CA

Scale @ A3 1:20,000