

Red John Pumped Storage Hydro Scheme

Volume 5, Appendix 14.1: Socio-
economic and Access
Questionnaires

ILI (Highlands PSH) Ltd.

November 2018

Quality information

Prepared by

Sarah Young

Graduate
Environmental
Consultant

Checked by

Corey Simpson

Principal Environmental
Consultant

Verified by

Corey Simpson

Principal Environmental
Consultant

Approved by

Catherine Anderson

Associate Director

Revision History

Revision	Revision date	Details	Authorized	Name	Position
1	November 2018	Submission	CA	Catherine Anderson	Associate Director

Table of Contents

Appendix 14.1 Socio-economic and Access Questionnaires Summary	1
14.1 Introduction	1
14.2 Accommodation.....	1
14.3 Access	3

Tables

Table 14.1 Numbers of Rooms and Beds as provided in Questionnaire Responses.....	2
Table 14.2 Key - Route Names	4

Inserts

Insert 14.1 Accommodation Percentage Occupancy by Month of the Year.....	2
Insert 14.2 Frequency of Use of Local Routes.....	3
Insert 14.3 Path Network Map Provided with Questionnaires.....	4
Insert 14.4 Route Use as Reported by Questionnaire Respondent	5

© 2018 AECOM Limited. All Rights Reserved.

This document has been prepared by AECOM Limited ("AECOM") for sole use of our client (the "Client") in accordance with generally accepted consultancy principles, the budget for fees and the terms of reference agreed between AECOM and the Client. Any information provided by third parties and referred to herein has not been checked or verified by AECOM, unless otherwise expressly stated in the document. No third party may rely upon this document without the prior and express written agreement of AECOM.

Appendix 14.1 Socio-economic and Access Questionnaires Summary

14.1 Introduction

14.1.1 This appendix summarises the responses from the questionnaires that were conducted as part of the socio-economic and tourism assessment baseline studies.

14.1.2 Three questionnaires were conducted as part of the baseline study for the EIA Report. These were:

- The Business Questionnaire - sent out to local businesses in May 2018 and contained questions relating to business type, accommodation, commercial use of local access, and private water supplies (PWS);
- The Accommodation Questionnaire – available at the public exhibition on the 27 and 28 June 2018 for any accommodation providers attending the event; and
- The Access Questionnaire - available at the public exhibition on the 27 and 28 June 2018 for the general public's comments on use of local routes and access across the Development Site.

14.1.3 The aim of the questionnaires was to collect information on local accommodation and access in terms of recreational and commercial use of the paths and routes that cross the Development Site. Additionally, the questionnaires sought to determine the locations of PWS. The full text of these questionnaires is set out in Annex 14.1.1 of this appendix.

14.1.4 A total of 15 questionnaires were completed. As the sample size is small it cannot be considered representative of the study area. However it can help to inform the understanding of the area and support data collected from publicly available resources. The breakdown across the different types of surveys was:

- Business – 9;
- Accommodation – 2; and
- Access – 4.

14.1.5 The responses pertaining to local accommodation and access are summarised in sections 14.2 and 14.3 respectively. The response wording of the completed questionnaires is available in Annex 14.1.2 of this appendix.

14.2 Accommodation

Respondents

14.2.1 Six accommodation businesses returned questionnaires. Four completed Business Questionnaires and two completed Accommodation Questionnaires. The accommodation respondents were sub-categorised as follows:

- Three self-catering accommodation;
- Two Bed and Breakfasts (B&Bs); and
- One campsite.

Rooms and Beds

14.2.2 The six accommodation respondents provided details of the number of rooms and beds at their properties; these are listed in Table 14.1. All of the properties had 10 or fewer rooms and the maximum total number of rooms across the six respondents is 45. The total number of beds is between 73 and 89.

Table 14.1 Numbers of Rooms and Beds as provided in Questionnaire Responses

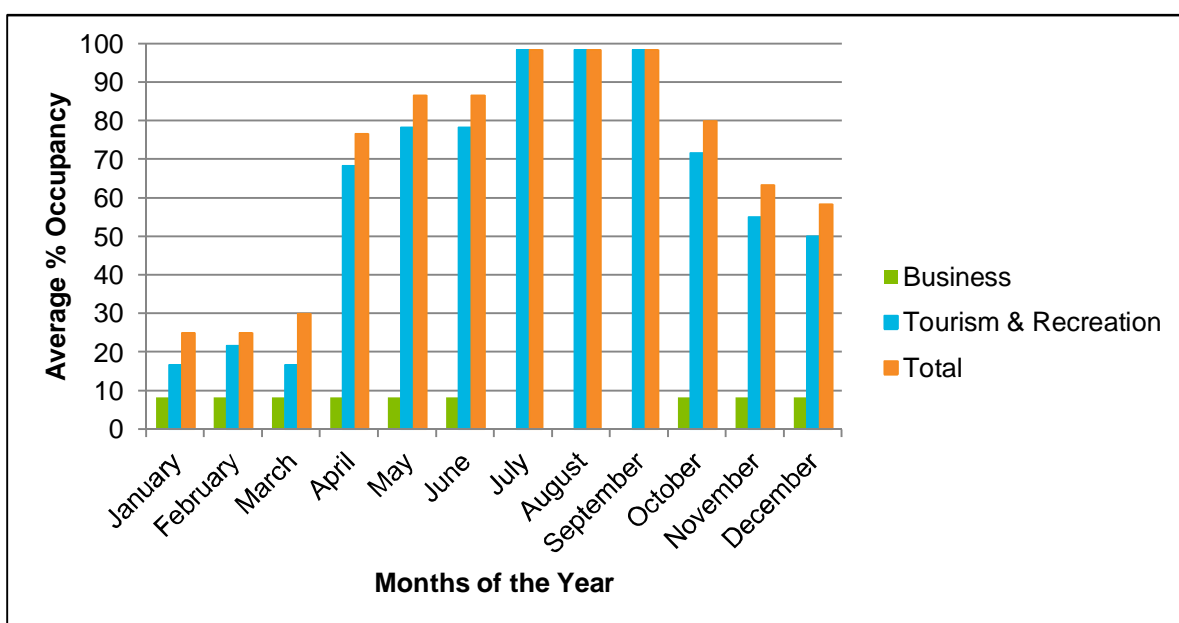
Number of Rooms	Number of Beds
6 - 10	24-40
6 - 10	16
6 - 10	19
<5	6
<5	2
<5	6
Total number of beds	73-89

Purpose of Stay

14.2.3 All of the respondents reported that their guests' main purpose of stay was tourism and recreation. Two of the respondents also reported some visitors staying for business. No business trips were reported during the peak season and throughout the rest of the year business trips made up only a minor proportion (<10%) of guests.

Occupancy

14.2.4 Three of the respondents provided estimations of occupancy per month. The average (mean) of these responses is graphed in Insert 14.1 below. From the three responses, July – September are the peak months with nearly 100% occupancy and the lowest occupancy occurs in January – March.



Insert 14.1 Accommodation Percentage Occupancy by Month of the Year

14.3 Access

Respondents

14.3.1 There were 10 access responses received. Six of these were Business Questionnaires and related to the commercial use of the paths and routes across the Development Site. Four were Access Questionnaires and related to the recreational use of the paths and routes across the Development Site.

Activities

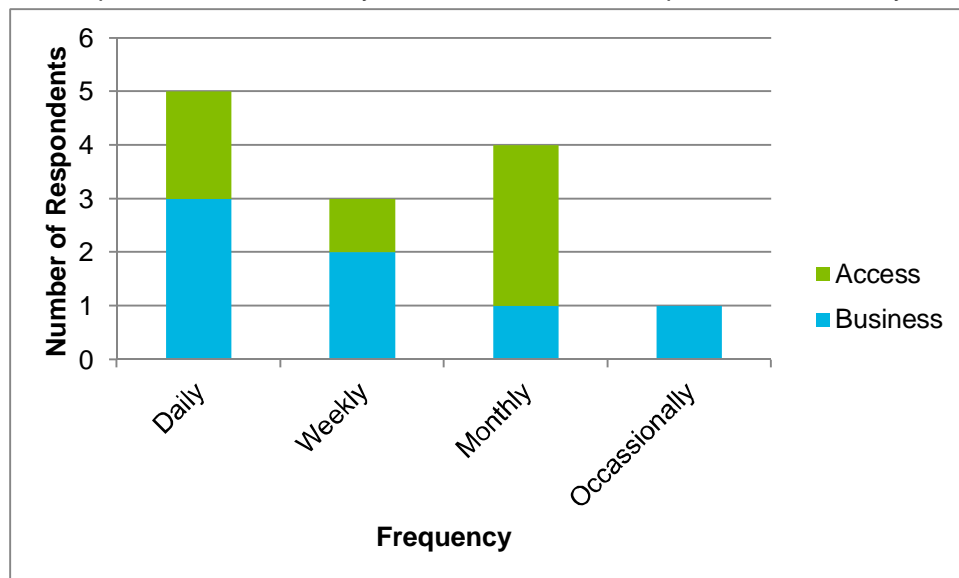
14.3.2 Three of the business respondents said that their businesses rely on access to local routes and paths. A fourth responded that their business was 'partly' reliant. Activities mentioned by the business respondents were; botanicals and vehicle access.

14.3.3 The respondents to the access questionnaires cited walking, dog walking, cycling/ biking, running and driving to Inverness as the activities for which they use the local routes and paths.

Frequency of Use

14.3.4 **Insert 14.2** graphs the reported frequency of use of the paths and routes within the Development Site by questionnaire. Respondents to both questionnaires typically reported multiple frequencies of use of the local routes e.g. both daily and monthly. Frequency of use varied for different routes for three respondents and for different seasons for one.

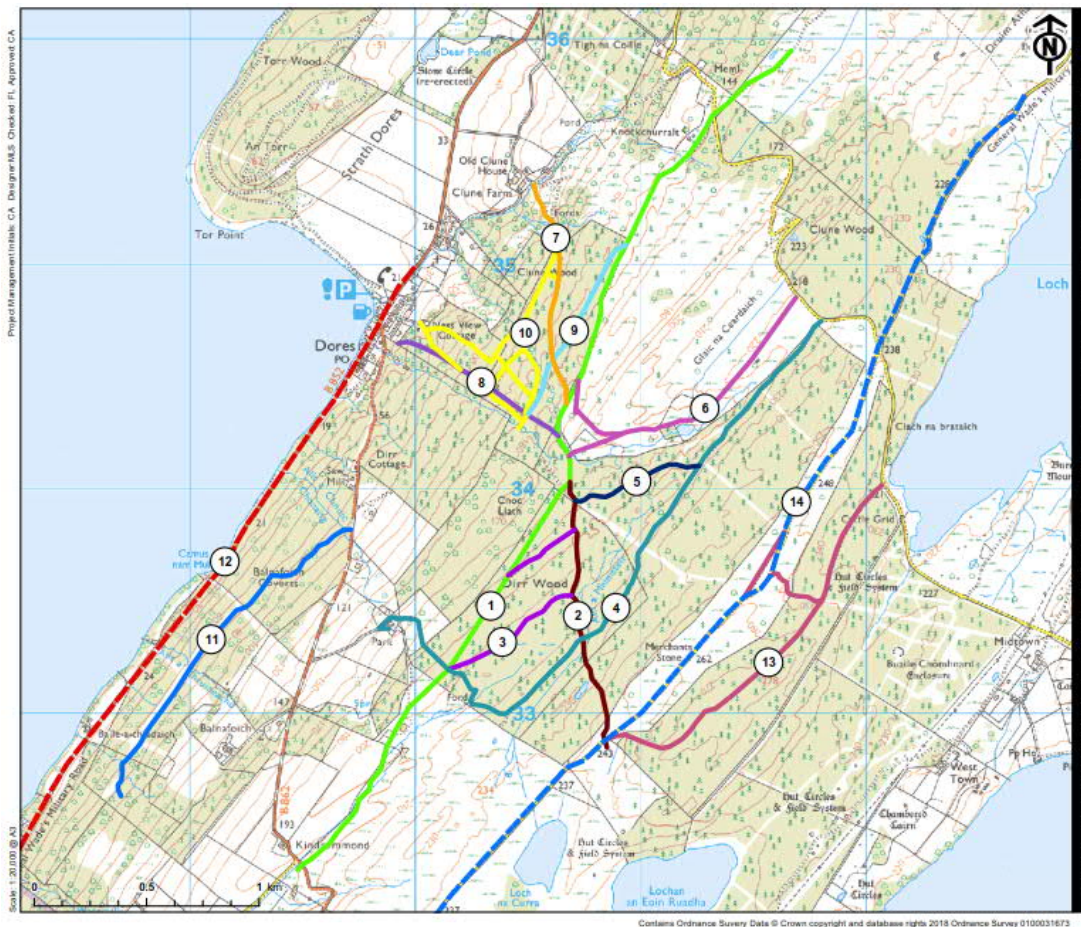
14.3.5 Five respondents said that they used at least one of the paths or routes daily.



Insert 14.2 Frequency of Use of Local Routes

Routes Used

14.3.6 The Access and Business Questionnaires were accompanied by a map of the local path network with each of the paths coloured and numbered as shown in Insert 14.3.



Insert 14.3 Path Network Map Provided with Questionnaires

14.3.7 The names of routes corresponding with the numbers presented on the map are set out in Table 14.2.

Table 14.2 Key - Route Names

Number	Route Name	Start and End Points
1	Core Path IN12.04 and IN12.05	Kindrummond – Darris Road.
2	Part of IN12.05	C1064 – Dirr Wood.
3	Local Path	Between IN12.04 and IN12.05.
4	Local Path	Darris Road to Park.
5	Local Path	Local path 4 to IN12.05.
6	Local Path	Darris Road to IN12.05.
7	Local Path	Clune Farm to IN12.05.
8	Local Path	Dores to IN12.05.
9	Local Path	Local path 8 to IN12.05.
10	Local Path	Collection of routes within Clune Wood.
11	Local Path	B862 to Balnafoich.

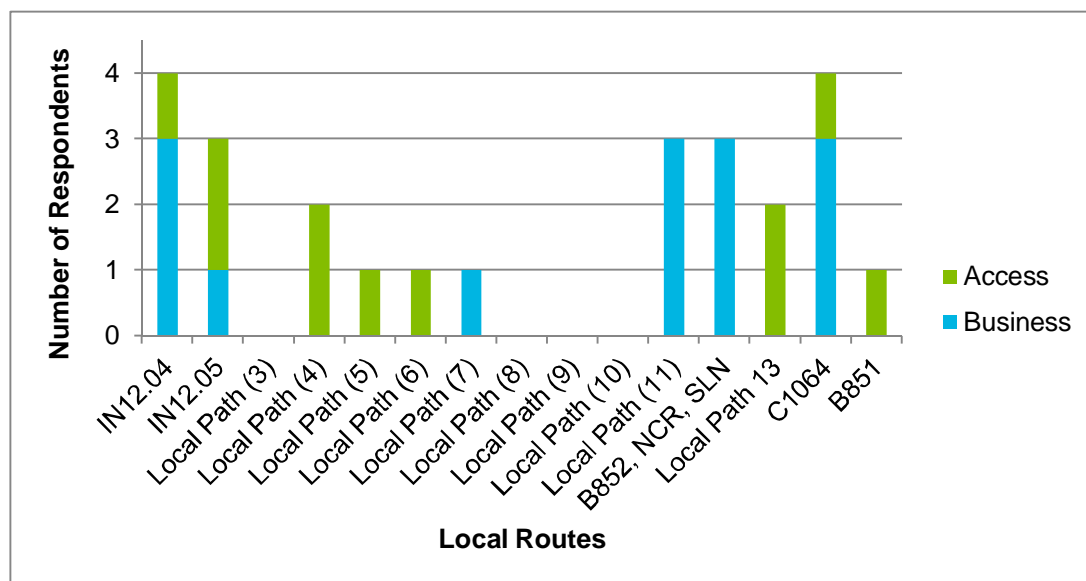
Number	Route Name	Start and End Points
12	B852 National Cycle Route (NCR) 78 - The Caledonian Way South Loch Ness Trail	Along the loch shore within the Development Site.
13	Local Path	C1064 to Loch Ashie.
14	C1064 – General Wade’s Military Road	Ashie Moor towards Inverness.

14.3.8 The questionnaire respondents were asked to list the routes that they used. The responses by questionnaire type are presented in Insert 14.4.

14.3.9 The routes listed by the highest number of respondents across both the Business and Access Questionnaires were the IN12.04 and the C1064 with four listings each. This was followed by the IN12.05, Local path 11 and the B852 which were each listed three times.

14.3.10 The respondents to the Access Questionnaire also listed Local path 4 and Local path 13 twice and Local path 5 and 6 once. One respondent also listed the B851 in addition to the routes presented on the Insert 14.3 map.

14.3.11 The respondents to the business questionnaire also listed Local path 7 once.



Insert 14.4 Route Use as Reported by Questionnaire Respondent

Annex 14.1.1 Socio-Economic and Access Questionnaires Text

14.1.1 The following is the text of the three questionnaires conducted as part of the Socio-economic and Tourism Assessment baseline:

- The Business Questionnaire;
- The Accommodation Questionnaire; and
- The Access Questionnaire.

AECOM
1 Tanfield
Edinburgh
EH3 5DA
+44 131 301 8600
16/05/18

Dear Sir/ Madam,

Red John Pumped Storage Hydro – Business Questionnaire

In September 2017, Intelligent Land Investment (ILI) Group submitted a Scoping Report to the Scottish Government for the proposed construction and operation of a Pumped Storage Hydro facility off Loch Ness at Dores, approximately 14 kilometres (km) southwest of Inverness. The Project is designed to generate electricity during peak loadings on the National Grid. The Project reservoir (referred to as the headpond) will be replenished during times of surplus electricity by pumping water from Loch Ness up to the headpond.

As part of the section 36 application ILI have commissioned AECOM to undertake an Environmental Impact Assessment (EIA) to assess the potential impacts of the Project. This will be summarised in an EIA Report, which will be submitted later this year.

In order to inform the EIA Report, AECOM will be undertaking a socio-economic assessment to determine potential impacts and benefits to the local community, industry and employment during the construction and operational phases of the scheme. We will be assessing elements such as impacts on tourism, temporary accommodation for workers, and investigating the probability of utilising local trades and businesses. We recognise that tourism is important to the local area and would like to have an understanding of estimated booking patterns for accommodation and the frequency and volume of footpath and trail use.

We enclose a questionnaire that will inform the assessment specifically in relation to available accommodation in the area as well as the use of the footpaths and trails in the vicinity of the Project site. It would be sincerely appreciated if you could complete the enclosed questionnaire and return it to us by 25 June 2018. This will provide valuable information to inform the socio-economic assessment in the EIA Report.

You can send the questionnaire direct to us at RedJohnPSH@aecom.com. For more information about the proposed Red John pumped storage scheme please go to <http://www.redjohnpsh.co.uk/>. The Request for Scoping Report can be viewed on the Energy Consents Unit (ECU) website with the corresponding Scoping Opinion from the Scottish Ministers: <http://www.energyconsents.scot/ApplicationSearch.aspx> using the ECU reference number: ECU00000488.

As the Project progresses there will be further opportunities to provide comment. A public exhibition will be held at Dores Community Hall on Wednesday 27 and Thursday 28 of June. The exhibition will start at 3pm both days and finish at 8pm on the Thursday and 9pm on the Friday. You are invited to attend the exhibition to find out further details about the Project and to provide your feedback.

Should you have any questions please do not hesitate to contact us at the email address above or via our website.

Yours sincerely,

AECOM Project Manager

Business Questionnaire

Red John Pumped Storage Hydro

Name and Address of Establishment:
Contact Name:
Contact Telephone:
Contact Email Address:

Question 1.		
Please choose one of the following which describes your business type. If you answer (a) please proceed to question 2. If you answer (b) – (e), please proceed to question 3.		
a. Accommodation	b. Food and drink	c. Tourism or recreation attraction
d. Local business or service	e. Other:	

Question 2.a		
Please choose one of the following which describes your accommodation facility:		
a. Hotel	b. B&B	c. Self-catered Accommodation
d. Campsite	e. Other (please specify):	

Question 2.b				
How many rooms do you have?				
a. 1-5	b. 6-10	c. 11-20	d. 21-30	e. More than 31

Please provide number of beds:

Question 2.c		
Please choose which of the following best describes the purpose of people staying at your accommodation facility:		
a. Business	b. Tourism and Recreation	c. Mixture of both
d. Other (please specify):		

Question 2.d
Please provide the approximate percentage of accommodation capacity used per month per purpose (i.e. 20% business, 80% tourism, 0% other in August)

Month	% Business	% Tourism & Recreation	% Other
January			
February			
March			
April			
May			
June			
July			
August			
September			
October			
November			
December			

<p>Question 3.a During construction, paths and roads around the Project may need to be closed or diverted in the interest of protecting public safety. Closures and diversions will be temporary and all routes will be reinstated post-construction. The Project will provide path improvements/ upgrades for the routes affected by construction. A map of potentially affected routes is enclosed. This question is regarding the business use of these footpaths and trails.</p>			
<p>What is your business?:</p>			
<p>Question 3.b Does your business rely on the local routes, paths and trails identified on the attached map?</p>		<p>Yes / No</p>	
<p>Question 3.c If yes, how frequently does your business use the routes, paths and trails?</p>			
<p>a. Annually</p>	<p>b. Monthly</p>	<p>c. Weekly</p>	<p>d. Daily</p>
<p>Question 3.d Using the route labels on the enclosed map, which are the routes you use most frequently?</p>			
<p>Question 3.e Do you have any comments regarding path and road closure and diversions?</p>			

Question 4.

Do you have any comments on the Project?

Private Water Supplies - This question only relates to businesses within the Dores and Essich Community Council area.

Under the Private Water Supplies (Scotland) Regulations 2006, local councils are required to keep a record of all private water supplies in their area. However an evaluation of the regulations conducted in 2016 for the Scottish Government¹ found that it was not clear that all registers were maintained with up-to-date information.

In the interest of protecting private water supplies that may be impacted by construction, the Project has obtained the private water supply register maintained by the Highland Council. In addition to this, the Project would like to give you the opportunity to provide details of your private water supply.

Question 5.a

Do you have a private water supply (i.e. not mains water)?

Yes / No

Question 5.b

If yes, what is the water used for?

a. Drinking

b. Non-potable

c. Stock watering

Question 5.c

What type of source is it?

a. Well/ borehole

b. Spring

c. Watercourse

¹ ICF Consulting Services and University of Dundee for Scottish Government. (2016). *An Evaluation Of Private Water Supply Regulation In Scotland*. Available: <http://dwqr.scot/media/29747/dwqr-an-evaluation-of-private-water-supply-regulation-in-scotland-final-report-25-jan-2016.pdf>

[Accessed 14/05/18]

Accommodation Questionnaire

Red John Pumped Storage Hydro

Name and Address of Establishment:

Contact Name:

Contact Telephone:

Contact Email Address:

Question 1.

Please choose one of the following which describes your business type. If you answer (a) please proceed to question 2. If you answer (b) – (e), please proceed to question 3.

a. Accommodation	b. Food and drink	c. Tourism or recreation attraction
d. Local business or service	e. Other:	

Question 2.a

Please choose one of the following which describes your accommodation facility:

a. Hotel	b. B&B	c. Self-catered Accommodation
d. Campsite	e. Other (please specify):	

Question 2.b

How many rooms do you have?

a. 1-5	b. 6-10	c. 11-20	d. 21-30	e. More than 31
--------	---------	----------	----------	-----------------

Please provide number of beds:

Question 2.c

Please choose which of the following best describes the purpose of people staying at your accommodation facility:

a. Business	b. Tourism and Recreation	c. Mixture of both
d. Other (please specify):		

Question 2.d			
Please provide the approximate percentage of accommodation capacity used per month per purpose (i.e. 20% business, 80% tourism, 0% other in August)			
Month	% Business	% Tourism & Recreation	% Other
January			
February			
March			
April			
May			
June			
July			
August			
September			
October			
November			
December			

Access Questionnaire

Red John Pumped Storage Hydro

During construction, paths and roads around the Project may need to be closed or diverted in the interest of protecting public safety. Closures and diversions will be temporary and all routes will be reinstated post-construction. The Project will provide path improvements/ upgrades for the routes affected by construction. The Access Routes map shows the potentially affected routes.

Contact Details [Optional] Address:
Contact Name:
Contact Telephone:
Contact Email Address:

Question 1	
Does you use the local routes identified on the access route map?	Yes / No

Question 2			
If yes, how frequently do you use the routes, paths and trails?			
a. Annually	b. Monthly	c. Weekly	d. Daily

Question 3			
What activities do you use the routes for?			
a. Walking	b. Dog walking	c. Cycling/ biking	d. Horse riding
e. Other (please specify):			

Question 4
Using the route labels on the access route map, which are the routes you use most frequently?

Question 5

Do you have any comments regarding path and road closure and diversions?

Question 6

Do you have any comments on the Project?

Annex 14.1.2 Socio-economic and Access Questionnaire Responses

- 14.1.1 The Following tables contain the text of the responses from the questionnaires pertaining to socio-economics and access.
- The responses to the Business Questionnaire are listed as respondents 1 -5 in Table 14.1 Business Questionnaire Responses - Respondents 1 -5Table 14.1 and 6-9 in Table 14.2;
 - The responses to the Accommodation Questionnaire are listed in Table 14.3; and
 - The responses to the Access Questionnaire are listed in Table 14.4.
- 14.1.2 The responses have been arbitrarily numbered, restarting with each of the questionnaires. As such respondent 1 is not the same individual across all of the questionnaires, although multiple responses have been received from some respondents.

Table 14.1 Business Questionnaire Responses - Respondents 1 -5

		Respondent 1	Respondent 2	Respondent 3	Respondent 4	Respondent 5
1. Please choose one of the following which describes your business type.		-	N/A	Food and drink	Accommodation	Accommodation
2.a Please choose one of the following which describes your accommodation facility:		-	N/A	-	Campsite	B&B
2b. How many rooms do you have?		-	N/A	-	6 to 10	1 to 5
Number of beds		-	N/A	-	4 per pod	6
2c. Please choose which of the following best describes the purpose of people staying at your accommodation facility:		-	N/A	-	100% Tourism	Tourism and recreation
Jan	% Business	-	-	-	-	1
	% Tourism & Recreation	-	-	-	-	99
	% Other	-	-	-	-	-
Feb	% Business	-	-	-	-	1
	% Tourism & Recreation	-	-	-	-	99
	% Other	-	-	-	-	-
Mar	% Business	-	-	-	-	1
	% Tourism & Recreation	-	-	-	-	99

		Respondent 1	Respondent 2	Respondent 3	Respondent 4	Respondent 5
	% Other	-	-	-	-	-
Apr	% Business	-	-	-	-	1
	% Tourism & Recreation	-	-	-	100	99
	% Other	-	-	-	-	-
May	% Business	-	-	-	-	1
	% Tourism & Recreation	-	-	-	100	99
	% Other	-	-	-	-	-
Jun	% Business	-	-	-	-	1
	% Tourism & Recreation	-	-	-	100	99
	% Other	-	-	-	-	-
Jul	% Business	-	-	-	-	1
	% Tourism & Recreation	-	-	-	100	99
	% Other	-	-	-	-	-
Aug	% Business	-	-	-	-	1
	% Tourism & Recreation	-	-	-	100	99
	% Other	-	-	-	-	-
Sept	% Business	-	-	-	-	1
	% Tourism & Recreation	-	-	-	100	99
	% Other	-	-	-	-	-
Oct	% Business	-	-	-	-	1

		Respondent 1	Respondent 2	Respondent 3	Respondent 4	Respondent 5
	% Tourism & Recreation	-	-	-	100	99
	% Other	-	-	-	-	-
Nov	% Business	-	-	-	-	1
	% Tourism & Recreation	-	-	-	100	99
	% Other	-	-	-	-	-
Dec	% Business	-	-	-	-	1
	% Tourism & Recreation	-	-	-	100	99
	% Other	-	-	-	-	-
3a. What is your business?:		Art studio and tutoring	-	Distillery	Camping pods	B&B
3b. Does your business rely on the local routes, paths and trails identified on the attached map?		No	No	Yes	No	No
3c. If yes, how frequently does your business use the routes, paths and trails?		-	-	monthly, weekly, daily	N/a	Weekly
3d. Using the route labels on the enclosed map, which are the routes you use most frequently?		-	12; 14	1; 11	N/A	11; 12

	Respondent 1	Respondent 2	Respondent 3	Respondent 4	Respondent 5
3e. Do you have any comments regarding path and road closure and diversions?	I am semi-retired now, but as a local really appreciate being told well in advance of closures and diversions to the main B862 road. I still run the occasional painting class and need to know well advance if the roads are to be closed.	Now don't use any of them apart from 12 and 14 as access roads	Our use of the paths is season and varies from daily to monthly depending on botanicals and growing season.	No! Wrong side of the loch. We are right opposite Dores.	-
4. Do you have any comments on the Project?	-	I would not want it to be too noisy e.g. continuous hum as we are the 2nd closest house to project.	No	-	-

Table 14.2 Business Questionnaire Responses - Respondents 6 -9

	Respondent 6	Respondent 7	Respondent 8	Respondent 9
1. Please choose one of the following which describes your business type.	Accommodation	Accommodation	tourism or recreating attraction	Accommodation
2.a Please choose one of the following which describes your accommodation facility:	Self-catered accommodation	Self-catered accommodation	N/A	Self-catered accommodation
2b. How many rooms do you have?	6 to 10	6 to 10	N/A	1 to 5
Number of beds	19	16	N/A	2

		Respondent 6	Respondent 7	Respondent 8	Respondent 9
2c. Please choose which of the following best describes the purpose of people staying at your accommodation facility:		Tourism and recreation	Tourism and recreation	N/A	Tourism and recreation
Jan	% Business	-	25	N/A	0
	% Tourism & Recreation	100	40	N/A	100
	% Other	-	35 (vacant)	N/A	0
Feb	% Business	-	25	N/A	0
	% Tourism & Recreation	100	40	N/A	100
	% Other	-	35 (vacant)	N/A	0
Mar	% Business	-	25	N/A	0
	% Tourism & Recreation	100	40	N/A	100
	% Other	-	35 (vacant)	N/A	0
Apr	% Business	-	25	N/A	0
	% Tourism & Recreation	100	40	N/A	100
	% Other	-	35 (vacant)	N/A	0
May	% Business	-	25	N/A	0
	% Tourism & Recreation	100	40	N/A	100
	% Other	-	35 (vacant)	N/A	0
Jun	% Business	-	25	N/A	0
	% Tourism & Recreation	100	40	N/A	100
	% Other	-	35 (vacant)	N/A	0
Jul	% Business	-	0	N/A	0

		Respondent 6	Respondent 7	Respondent 8	Respondent 9
	% Tourism & Recreation	100	100	N/A	100
	% Other	-	0	N/A	0
Aug	% Business	-	0	N/A	0
	% Tourism & Recreation	100	100	N/A	100
	% Other	-	0	N/A	0
Sep	% Business	-	0	N/A	0
	% Tourism & Recreation	100	100	N/A	100
	% Other	-	0	N/A	0
Oct	% Business	-	25	N/A	0
	% Tourism & Recreation	100	40	N/A	100
	% Other	-	35 (vacant)	N/A	0
Nov	% Business	-	25	N/A	0
	% Tourism & Recreation	100	40	N/A	100
	% Other	-	35 (vacant)	N/A	0
Dec	% Business	-	25	N/A	0
	% Tourism & Recreation	100	40	N/A	100
	% Other	-	35 (vacant)	N/A	0
3a. What is your business?		Self-catering holiday house let through 'LHHCotland.com'. 'housebytheloch'.	Self-catered accommodation	Riding Centre	Self-catered accommodation
3b. Does your business rely on the local routes, paths and trails identified on the attached map?		Yes	Partly	-	Yes

	Respondent 6	Respondent 7	Respondent 8	Respondent 9
3c. If yes, how frequently does your business use the routes, paths and trails?	Daily	-	-	Daily; Occasionally
3d. Using the route labels on the enclosed map, which are the routes you use most frequently?	14	1, 2, 11	-	12; 1, 7, 14
3e. Do you have any comments regarding path and road closure and diversions?	The road running from loch Duntelchaig, through the crossroads at the intersection of No 14 and downwards past Clune Wood leading down the hair pin bend road to the B852 is used frequently by guests going to the Dores Inn.	-	-	Closure to B852 would be very problematic
4. Do you have any comments on the Project?	It doesn't appear to be mentioned, but as it is very narrow and has no signed passing places (as pointed out by one freaked guest who didn't know to use the corners instead!) so it having 3 junctions of possible traffic will need extra passing places. My neighbour uses it frequently. Will the residents of the Duntelchaig area be linked into the mains if they want to? To give the option would be nice. Note: call me if any workmen want to bring a campervan/ caravan as I may be able to rent an area depending on dates of required stay (not sure when project starts).	Anticipating some disruption during construction - noise, traffic etc. Would consider long-term lets to construction personnel if required.	The project will severely curtailed our riding operations so adequate provision will need to be made to make sure the impact is as little as possible - alternative tracks provided and plenty of communication about works in progress so we can work together.	Concern about increase traffic Concern about noise pollution.

Table 14.3 Responses to the Accommodation Questionnaire

		Respondent 1	Respondent 2
1. Please choose one of the following which describes your business type.		Accommodation	Local business / service – Office Environmental Consultancy
2.a Please choose one of the following which describes your accommodation facility:		B&B	N/A
2b. How many rooms do you have?		1 to 5	N/A
Number of beds		6	N/A
2c. Please choose which of the following best describes the purpose of people staying at your accommodation facility:		Tourism and recreation	N/A
Jan	% Business	0	N/A
	% Tourism & Recreation	10	N/A
	% Other	0	N/A
Feb	% Business	0	N/A
	% Tourism & Recreation	10	N/A
	% Other	0	N/A
Mar	% Business	0	N/A
	% Tourism & Recreation	25	N/A
	% Other	0	N/A
Apr	% Business	0	N/A
	% Tourism & Recreation	65	N/A
	% Other	0	N/A

		Respondent 1	Respondent 2
May	% Business	0	N/A
	% Tourism & Recreation	95	N/A
	% Other	0	N/A
Jun	% Business	0	N/A
	% Tourism & Recreation	95	N/A
	% Other	0	N/A
Jul	% Business	0	N/A
	% Tourism & Recreation	95	N/A
	% Other	0	N/A
Aug	% Business	0	N/A
	% Tourism & Recreation	95	N/A
	% Other	0	N/A
Sep	% Business	0	N/A
	% Tourism & Recreation	95	N/A
	% Other	0	N/A
Oct	% Business	0	N/A
	% Tourism & Recreation	75	N/A
	% Other	0	N/A
Nov	% Business	0	N/A
	% Tourism & Recreation	25	N/A
	% Other	0	N/A
Dec	% Business	0	N/A
	% Tourism & Recreation	10	N/A
	% Other	0	N/A

Table 14.4 Access Questionnaire Responses

	Respondent 1	Respondent 2	Respondent 3	Respondent 4
Do you use the local route identified on the access route map	Yes	Yes	Yes	Yes
If yes, how frequently do you use the routes, paths and trails?	Daily	Monthly	Monthly	Daily
What activities do you use the routes for?	Driving to and from Inverness	Walking; Dog Walking	Walking	Walking; Dog Walking; Cycling/ biking; Running
Using the route labels on the access route map, which are the routes you use most frequently?	B851	13,2,4	1	14 - Daily - walking and driving; 13 - Weekly - walking dogs; 2,4,5,6 - Monthly - Cycling
Do you have any comments regarding path and road closure and diversions?	The project will have enormous impact on the B851 if 300 people are employed and they don't live on site.	-	-	Construction will cause disturbance to other routes for walking and climbing and water sports. Climbing on Duntelchaig Crag. Walk routes not map, see annotations. Roads in area popular for cyclists and walkers/ runners. Training for Etape and Marathon. Historical value of route 14. Winter driving issues need considered for construction. 7 Lochs route very popular.
Do you have any comments on the Project?	I appreciate the importance of the project. I am concerned about the impact it will have on the local community during the construction phase.	Positive about project. What benefits will the project give to the local community?	-	See other form.

